

Deloitte.

Cyber Risk Services (CRS) Security. Evolved.

23 April, 2015

Agenda

01

15:30



Welcome Address

Panicos Papamichael
Deloitte Cyprus | ERS

02

15:45



Cyber Risk Services (CRS)

Christos Makedonas & Yiannis Ioannides
Deloitte Cyprus | CRS

03

16:45



Coffee Break

04

17:00



Introducing Deloitte Discovery Services

Bas Sluijsmans
Deloitte NL | Discovery Digital Forensics

05

18:45



Q&A

06

19:00



Cocktail

If you're online you're a Target

THERE IS
NOWHERE TO HIDE,
WE'RE LIVING IN
A **DIGITAL WORLD**



IF YOU'RE ONLINE YOU'RE A **TARGET.**

01/ **Your Information Network will be Compromised**
Unfortunately, it's inevitable that you will be attacked.

02/ **Physical Security and Cybersecurity are Increasingly Linked**
Typically, the physical security domain and the cybersecurity domain have been viewed separately. But that is no longer the case.

03/ **Cyber Damages go Beyond Euros**
While the average cost of a data breach may be well documented, the long-term effects on corporate reputation and brand significantly add to the toll.

04/ **Everything Can't be Protected Equally**

Ask yourself, "What and where are the crown jewels in my organization?" In other words, what data is crucial to running the organization, and what databases, if compromised, could put you out of business?

05/ **Your walls are Probably High Enough (or not?)**

Your walls are probably high enough (or not?). Companies continue to invest in the protection side of cybersecurity - more firewalls, more intrusion-detection systems. But most wall building may be about as high as it needs to be.

Given that hackers have likely already infiltrated, companies should focus more on the detection side to increase their vigilance against attacks and on recovery after the fact.

Effective and Well Balanced Cyber-Defense



Secure. Being secure means focusing protection around the risk sensitive assets at the heart of your organization's mission - the ones that both you and your adversaries are likely to agree are the most valuable.



Vigilant. Being vigilant means establishing threat awareness throughout the organization, and developing the capacity to detect patterns of behaviour that may indicate, or even predict, compromise of critical assets.



Resilient. Being resilient means having the capacity to rapidly contain the damage, and mobilize the diverse resources needed to minimize impact - including direct costs and business disruption, as well as reputation and brand damage.

Cyber Risk Services (CRS)

World Class Services

- Our security experts have the same skills and methods hackers use, but can also translate technical issues into business risks.
- Deloitte has a global reach, with a presence in over 150 countries worldwide.
- We can support you in solving security issues as a trusted advisor in a vendor-agnostic, but knowledgeable way.
- Deloitte has been ranked #1 in Global Risk Management Consulting in October 2014 and #1 globally in Security Consulting based on revenue in May 2014 by Gartner. Deloitte also named as leader by Forrester Research, Inc. in Information Security Consulting in a new report, The Forrester Wave™: Information Security Consulting Services, Q1 2013.

Magic Quadrant

Figure 1. Magic Quadrant for Global Risk Management Consulting Services



Cyber Risk Services (CRS)

Security. Evolved.



The Global Risk Landscape

By World Economic Forum

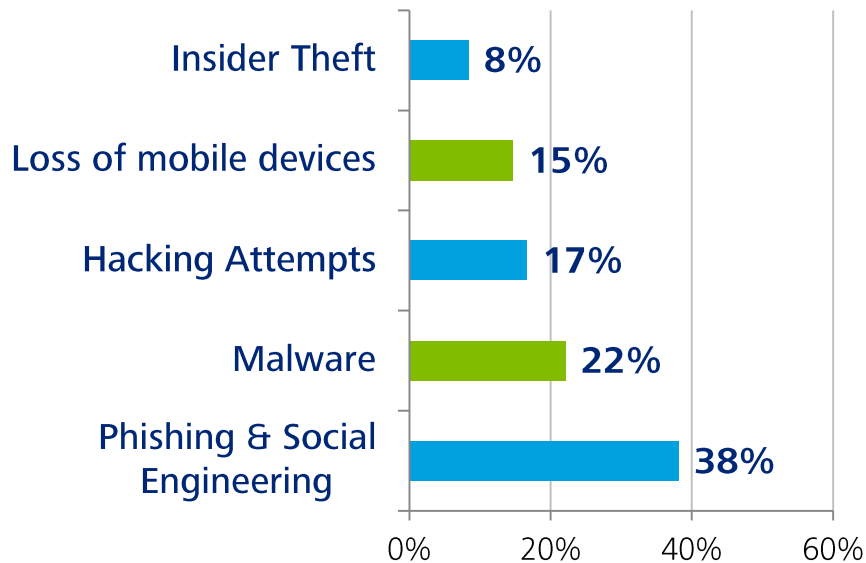
TOP GLOBAL RISKS ACCORDING TO THE WORLD ECONOMIC FORUM



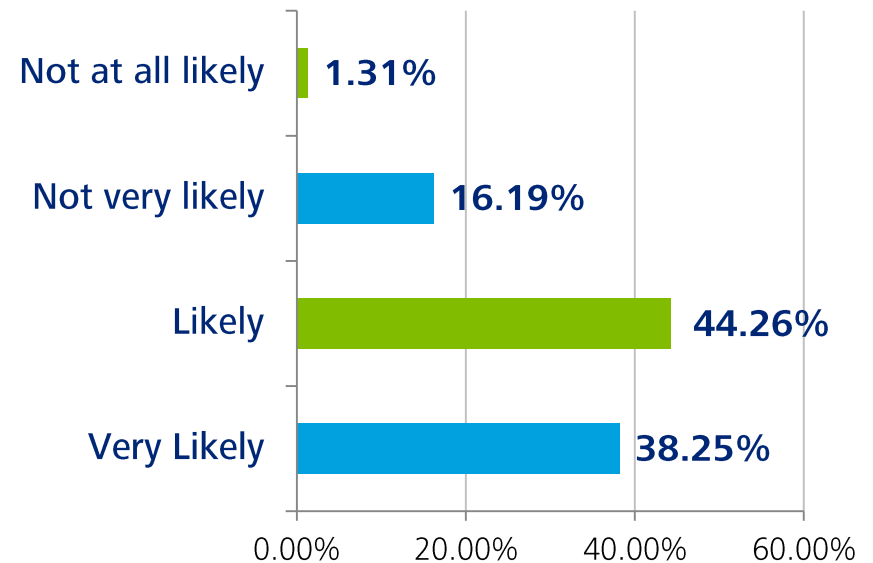
Significant Increase of Cyber Attacks

Some Figures

Which of the following attack types have exploited your enterprise in 2014?



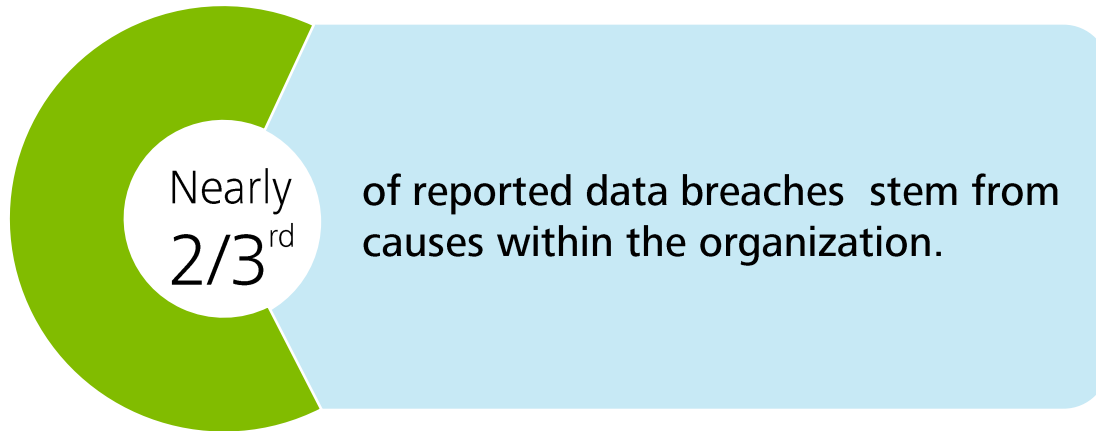
How likely do you think it is that your organisation will experience a cyberattack in 2015?



(State of Cybersecurity: Implications for 2015 - An ISACA and RSA Conference Survey)

Significant Increase of Cyber Attacks

Some Figures (cont.)

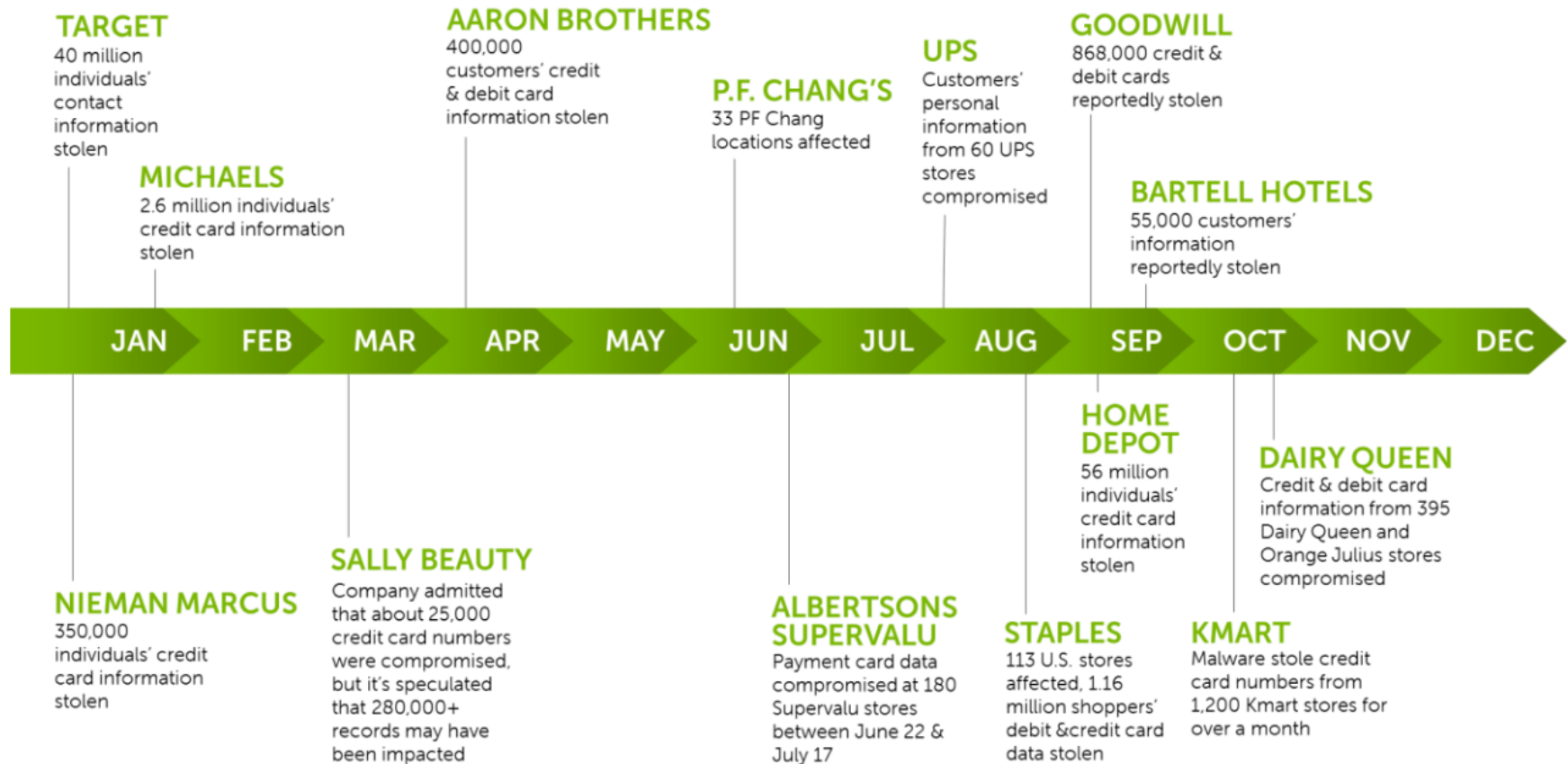


88% of cyber attacks are successful in less than one day. But in the same time period, only **21%** of firms are able to discover attacks, and just **40%** are able to restore their business.

Significant Increase of Cyber Attacks

Some Figures (cont.)

Timeline of High Profile Retail Breaches



(2015 Dell Security Annual Threat Report)

Legal & Regulatory & Professional Bodies Changes



- Directives – EU, Central Bank etc.
- New Professional Qualifications and Frameworks focused in Cyber Security (i.e. New ISACA CSX Cyber Security Nexus certifications).
- Law of 2004 Ratifying the Cybercrime Convention of 2001.
- Electronic Communications and Postal Services Law of 2004.
- Data Protection Act of 2001.
- Protection of Confidentiality of Private Communications (Interception of Conversations) Law of 1996.



New Proposed Antihacking Law

The tech community has long called for reforming the 1986 Computer Fraud and Abuse Act the federal antihacking law that criminalizes "unauthorized access" – and "exceeding authorized access"

- Strictness fines and penalties
- Cybersecurity plan: a mechanism for companies and government agencies to swap information on computer threats.

Cyber Attacks in Cyprus

Are we excluded from the Cyber Attack Zone?



Cyber Attacks in Cyprus

Are we excluded from the Cyber Attack Zone?

02 April 2015

Home / Datasets / kingskrupellos / Hacked By KingSkrupellos ...

Hacked By KingSkrupellos Cyberizm Digital ...

Go to resource

URL: <http://Hacked By KingSkrupellos Cyberizm Digital Security Tem>

HackED By KingSkrupellos Moslem Turkish Hacker - Cyberizm Digital Security Team :) This site has been hacked for the Victory of Dardanelles (Çanakkale) War - Because Turks have won the war against allied forces, England, France, New Zealand, Australia. Hoooooraayy !!! You have been Hacked - Just Shake your Hands haha :) No Fear Turkish Hacker - No Damage given to your site. Low Security. Please patch your system. How happy is the one who says, I am Turkish !!! We condemn the massacre in Egypt and in Palestine against innocent Moslems. We will be your Death Angels of Unbelievers of Islam !!! Stop Killing innocent Moslems in Palestine and other countries !!! Euzubillehimineseydanirracim (I take cover from Satans malignity to Allah) Bismillahirrahmenirrahim (In the name of Allah , the Entirely Merciful, the Especially Merciful) Allahu Ekber (Allah is unique) - Le ilehe illallah Muhammedürasüllallah (There is no god but Allah and Muhammad is the Messenger of Allah.) We will not allow that you are attacking our Prophet Hz.Mohammad (s.a.v) !!! One Turk Against the World !!! We will be the trouble who do not have any trouble in their life, and who is against us will have another trouble. One Turk .. Against The World..!!! We are everywhere !!! We are Legion. We do not forgive. We do not forget.Do not Expect Us. We come by surprise muhahaha :) We will be the shadow behind you, you will have fear and anxiety in your heart, and we will be mentioned in your gravestones. We are not the People who uses his/her country for their personal expedience !!! We are not the People, who do not know our friends ! But you are doing this always ! We are not the People looking for a suitable opportunity when somebody falls down and we do not kick them! But you are doing this always Stop it! We are the People who are standing next to powerless people.But you know what you are doing ? You always destroy,destruct and bomb them. We are the People who internalize our friendship very well. But you are stupid.Because you do not know how to have good relationship each other ! We are not like you !!! We are brother and sisters !!! Do you know who you are ? You are Unbeliever of Islam and you are hypocrites. KingSkrupellos (hacker_20) Was Here !!! Be careful what you are doing ! Otherwise you will be always hacked by All Moslem Hackers in the World ! The Time came that you must kick the bucket of your soul !!! Because, we came ! The Time came that we must to prevent the oppression of the oppressors ! If we cannot have a rest somewhere, nobody have a right to rest. You never can catch us but we will always hack you !!! We will be the Death Angels who disobey Turkish Nation and Moslem World. Do you know who we are => KingSkrupellos - H4CK4L - ByAyar - Archavin - D3NG3 - 1ht1y@r ~ D4RKG1RL - HackLoJen - Hacker Peyami - H4K1K4T - J4CK4L and other precious Cyberizm Members System Ownz - System Defaced by KingSkrupellos Muslim Turkish Hacker Fuck you all - Israel - USA - France - Italy - Germany - Russia - China - Brasil. Hooray, The Hell is just for oppressors !!!

No preview available. More details...

No handler defined for data type: <http://hacked by kingskrupellos cyberizm digital security tem>.

Resources

Hacked By KingSkrupellos ...

Social

Field	Value
Last updated	Apr 02, 2015

Dec 2014


Resources

Dec 25, 2014 - URL: [http://s\[redacted\]/storage/f/2014-12-24T22%3A27%3A26.078Z/index.html](http://s[redacted]/storage/f/2014-12-24T22%3A27%3A26.078Z/index.html). HACKED BY SLAYERSHACKTEAMHACKED BY ...

[index.htmlHTML - \[redacted\]age](#)

Dec 25, 2014 - URL: [http://s\[redacted\]/storage/f/2014-12-24T22%3A27%3A26.078Z/index.html](http://s[redacted]/storage/f/2014-12-24T22%3A27%3A26.078Z/index.html). HACKED BY SLAYERSHACKTEAMHACKED BY ...

Dec 2014



Τηλ.: +357 22 665102
Φαξ: +357 22 669459
email: info@oeb.org.cy
www.oeb.org.cy

Γραφείο Γενικού Διευθυντή

Αρ.α.529/2014

15 Δεκεμβρίου, 2014

Προς: Όλα τα Μέλη

Κυρίες, Κύριοι,

Θέμα: Κρούσματα Απάτης από Χάκερς Διαδικτύου με Εμβάσματα στο Εξωτερικό

Cyprus Employers and Industrialists Federation

Cyber Attacks in Cyprus

Cyber Incidents

Who?



Cases



**Email
Communication
"Interception" &
Phishing**

Funds transfer to an
unauthorised third
party.

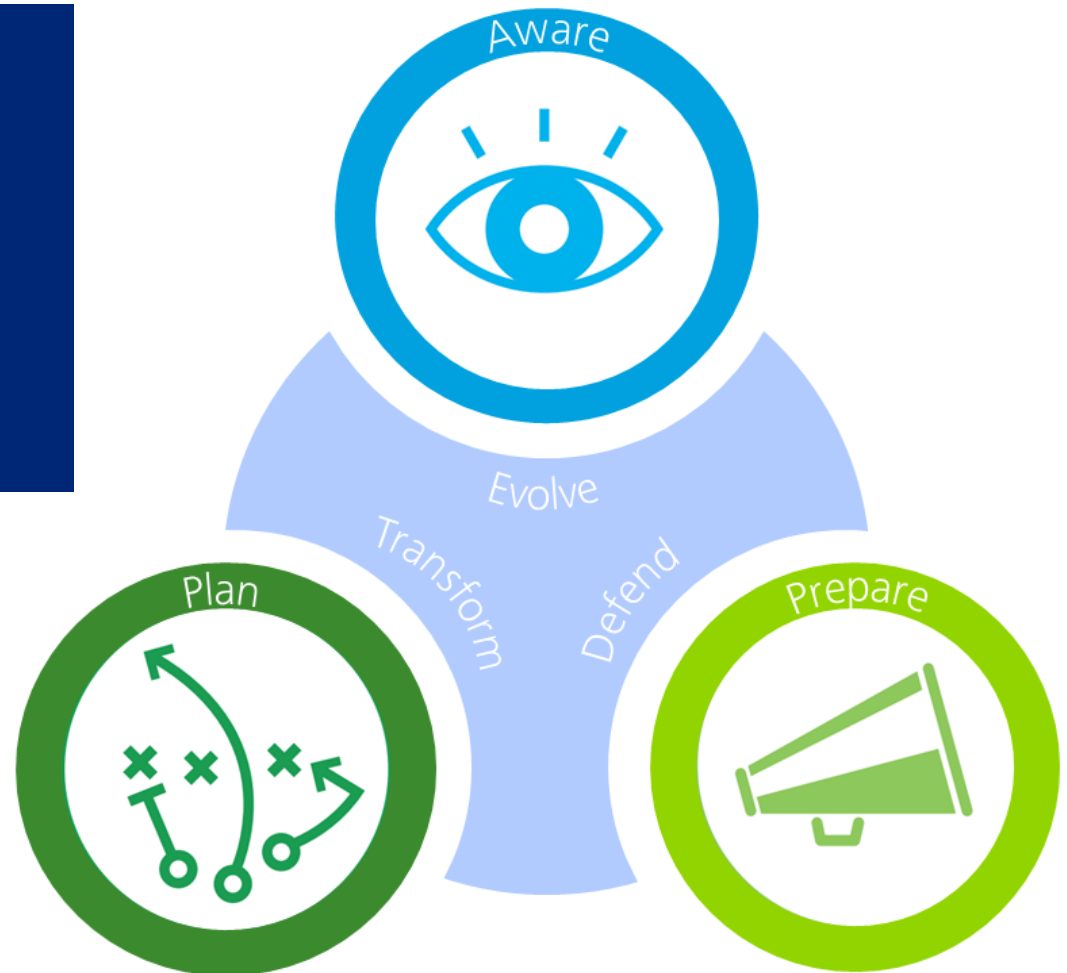


**Malicious
Attachment
& Data Leakage**
Client Data Stolen &
Non disclosure
settlement with the
attacker - Ransoms

Our Cyber Risk Services

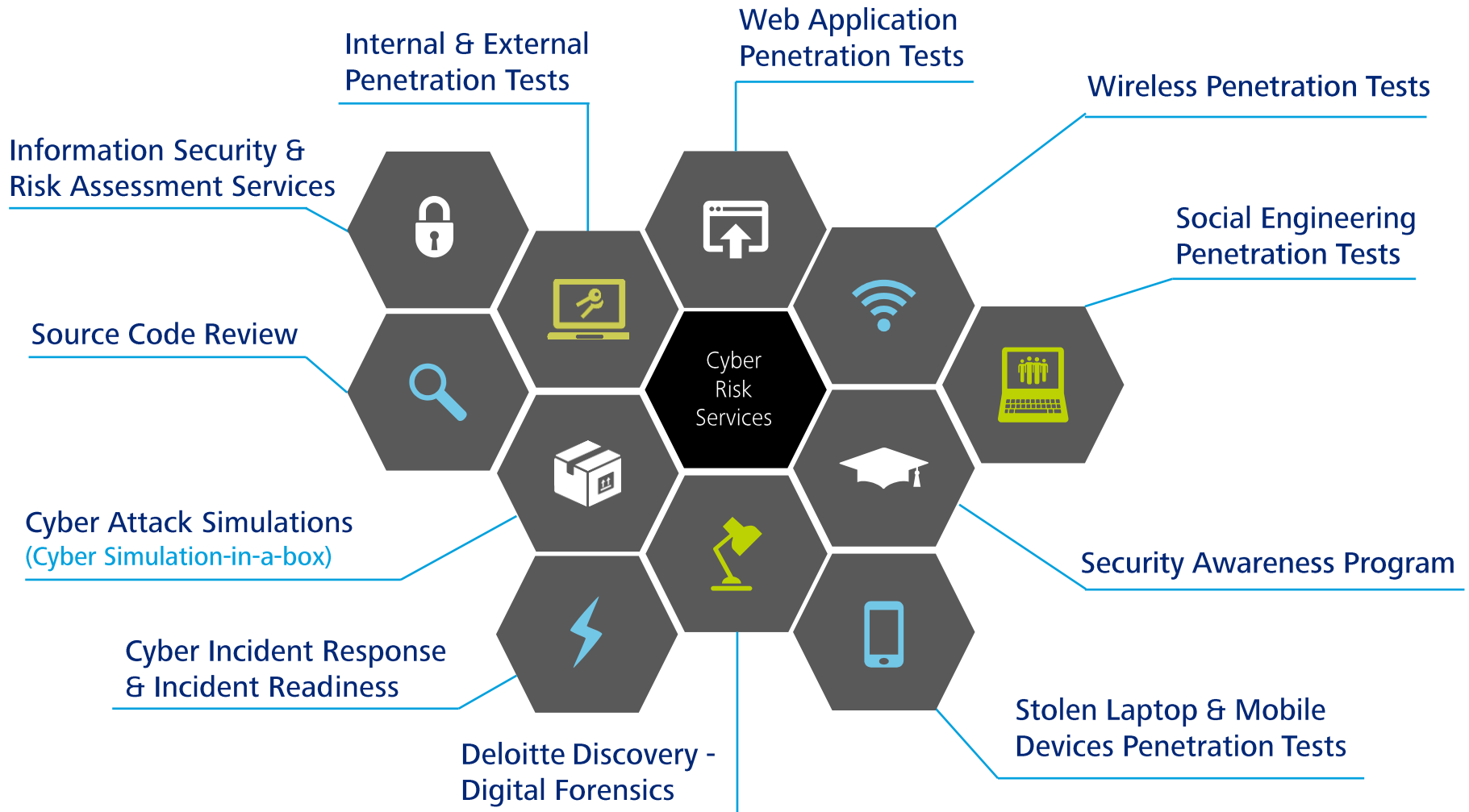
Security is not Firewalls,
Anti-Virus Solutions,
Security Policies, etc.

Security is a Landscape.



Cyber Risk Services (CRS)

Services Spectrum



Cyber Risk Services (CRS) Security. Evolved.



Deloitte refers to one or more of Deloitte Touche Tohmatsu Limited, a UK private company limited by guarantee, and its network of member firms, each of which is a legally separate and independent entity. Please see www.deloitte.com/about for a detailed description of the legal structure of Deloitte Touche Tohmatsu Limited and its member firms.

Deloitte provides audit, tax, consulting, and financial advisory services to public and private clients spanning multiple industries. With a globally connected network of member firms in more than 150 countries, Deloitte brings world-class capabilities and high-quality service to clients, delivering the insights they need to address their most complex business challenges. Deloitte has in the region of 200,000 professionals, all committed to becoming the standard of excellence.

This publication contains general information only, and none of Deloitte Touche Tohmatsu Limited, its member firms, or their related entities (collectively, the "Deloitte Network") is, by means of this publication, rendering professional advice or services. Before making any decision or taking any action that may affect your finances or your business, you should consult a qualified professional adviser. No entity in the Deloitte Network shall be responsible for any loss whatsoever sustained by any person who relies on this publication.



Beyond borders

Deloitte Discovery

April 23rd 2015 – Cyprus



Going beyond borders to move our clients ahead

We help you embrace change, turning issues into opportunities throughout the business lifecycle for growth, resilience, and long-term advantage.



**ELECTRONIC
DISCOVERY**



**DIGITAL
FORENSICS**

The Deloitte difference



6 Core Services



Discovery



Collections



Processing



Hosting



Document review



Digital Forensics

Discovery services for nearly 30 years



Clients on
continents **6**

Deloitte ranked #1 by Kennedy in
global forensics and dispute
advisory services

- Kennedy Consulting Research & Advisory; Kennedy Research & Advisory
estimates © 2013 Kennedy Information LLC. Reproduced under license

6
Industries



Consumer & Industrial Products



Financial Services



Public Sector



Technology, Media & Telecommunications



Life Sciences & Health Care



Energy & Resources



200,000+
PROFESSIONALS

Including **800** focused on Discovery

In more than **35** Countries

Why Deloitte Discovery

800 professionals globally

1 End to end
Discovery
services

3 Highly experienced
in working with
regulators

Highly
experienced
across all 6
industries 2

Deloitte knows
US/UK/EU litigation
and investigation
styles 4

5 Responsive
and
professional
services firm

Experienced
team and true
global reach 7

6 Consultative
approach –
Introducing
innovative solutions

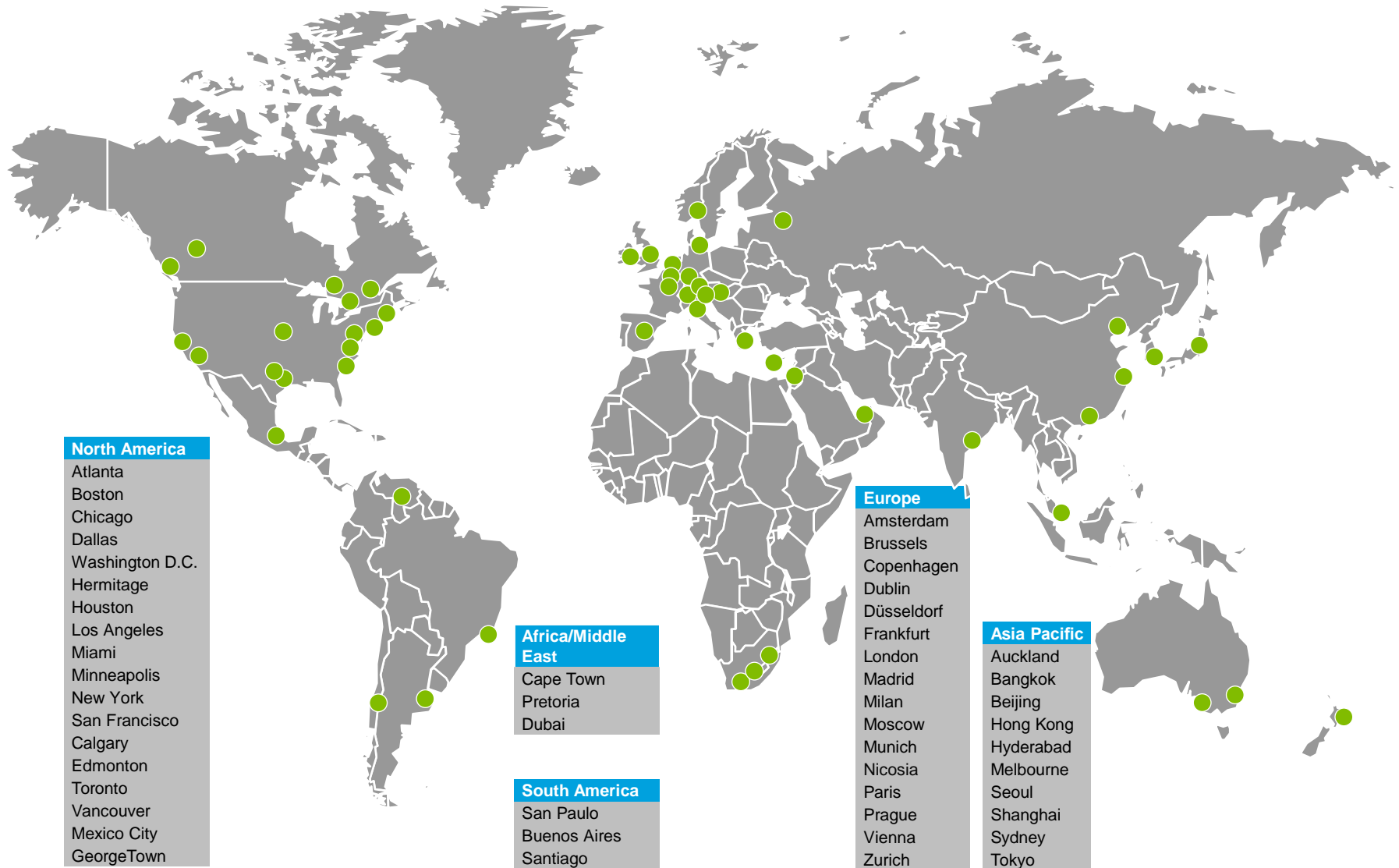
9 Best of breed
court approved
innovation

8 Deloitte Discovery
is personal – Local
roots – Global
connections

10

The worlds largest
eDiscovery provider

Deloitte Discovery presence





Forensic data collection

Identification
Preservation
Collection

Digital Forensics & Incident response

Intake of the event
Assessing the situation
Analyzing & closing the breach
Reporting & escalating
Remedial actions

Investigations

Computer Forensic investigations
Mobile phone and tablet
Other IT forensic related services required on a per case basis

Discovery

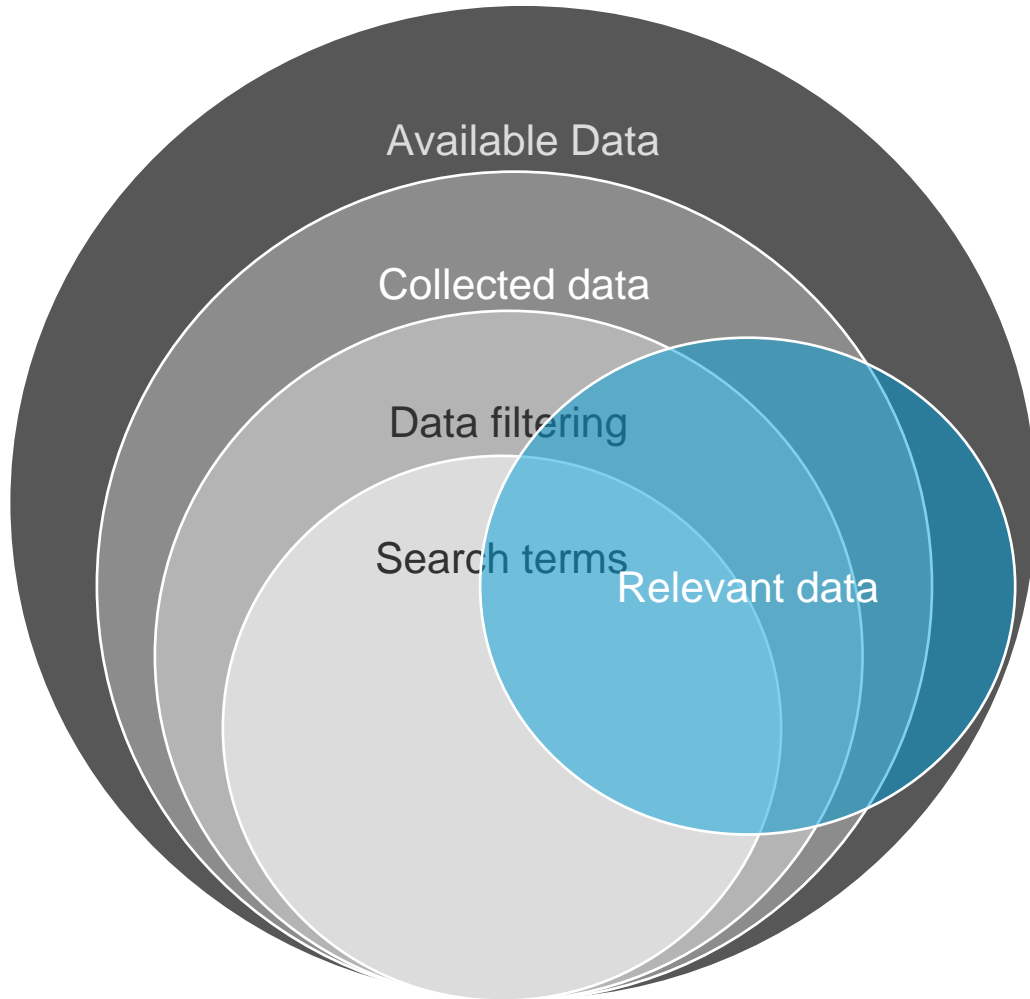
Rapid data recovery, processing & analysis
Early Case Assessments
Hosted review and litigation support



ELECTRONIC DISCOVERY

Electronic Discovery

Data landscape

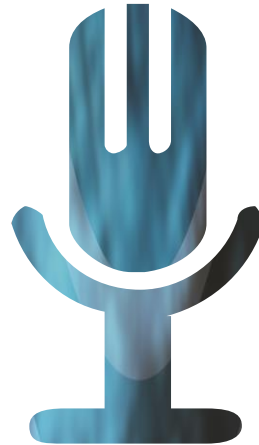


Discovery (innovation)

Other features and capabilities



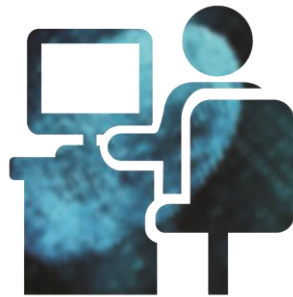
DATA
VISUALISATION



AUDIO
DISCOVERY



DISCOVERY
CLOUD



DOCUMENT
REVIEW SERVICES



DATA
HOSTING



DIGITAL FORENSICS

Digital Forensics - Cyber Response (CR)

Event types

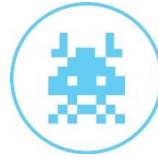
Advanced targeted attack



A targeted attack from a nation state or other credible organisation with an intention to exfiltrate corporate data.

These attacks can use any form of delivery mechanism but are hard to detect and even harder to effectively remediate.

Malicious code



Successful installation of malicious software that infects an operating system or application.

An attack executed via an email message, external device or web-based application.

Unauthorized access



An individual gains logical or physical access without permission to a network, system, application, data, or other resource.

This attack could originate from within or from outside the network.

Improper usage



Any event resulting from violation of an organisation's acceptable usage policies by an authorised user.

This could be accidental or on purpose but should be reviewed to ensure suitable action is taken.

Loss or theft of equipment



The loss or theft of a computing device or media used by the organisation.

A damage limitation exercise must be undertaken to ensure that relevant bodies are notified if necessary and the data is recovered where possible.



Investigation review

An organisation has carried out an internal investigation in to suspicious activity on the network. This investigation could involve any of the event categories identified above and will provide an impartial view of the steps taken and suggest recommendations for improvement.



CONCLUSION

Conclusion

In summary – Deloitte Discovery

- Deloitte has the experience, resources and technologies to address the global/national needs of corporates
- We address/support the whole of the Information Lifecycle Workflow
- We have significant experience of data transfers between data environments

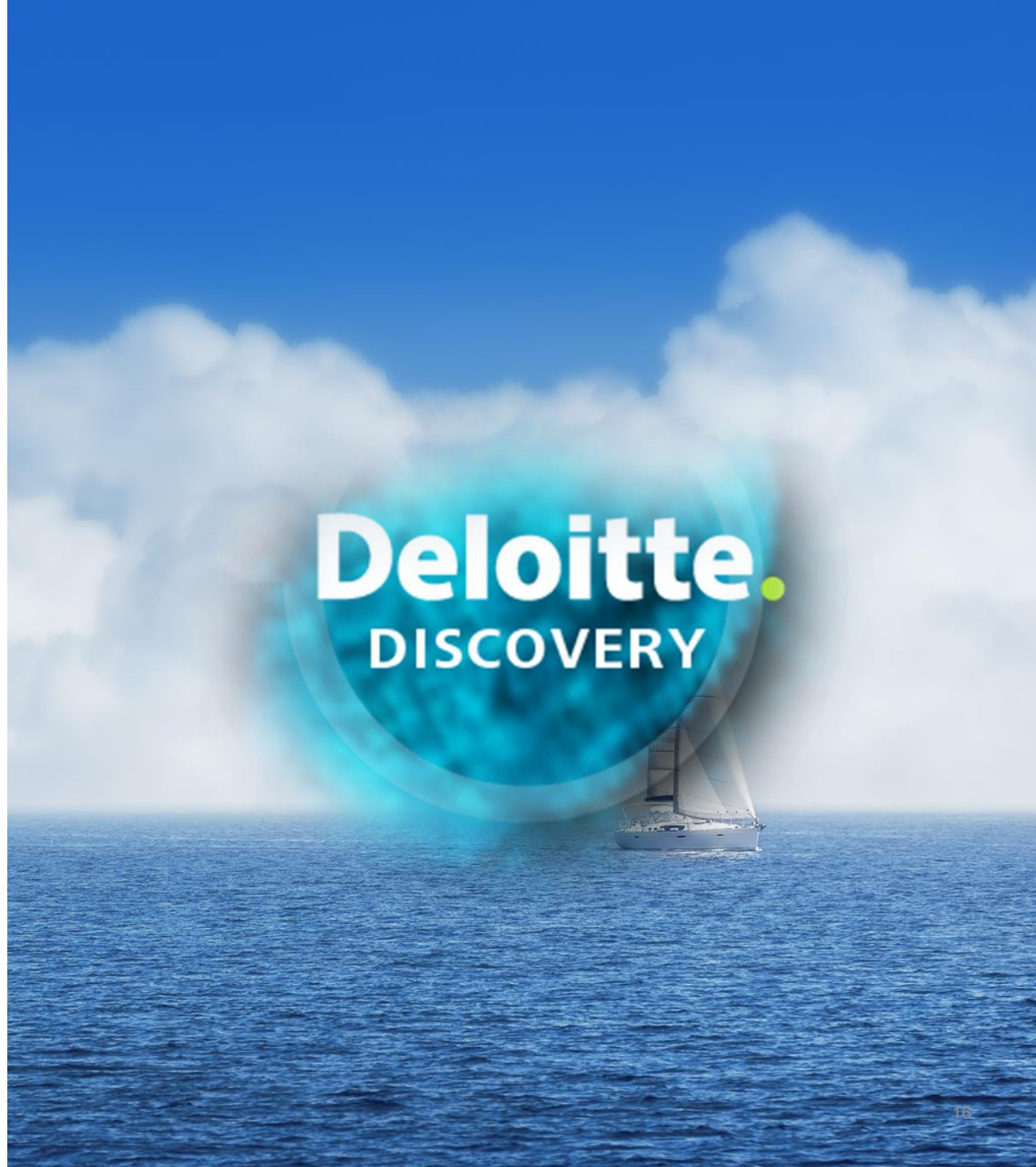


We help you embrace change, turning issues into opportunities throughout the business lifecycle for growth, resilience, and long-term advantage.

How we can help

- Flexibility and Coordination
- A Dedicated Team of experts
- Network of knowledge and experts across the globe
- Innovative, Efficient and Effective
- Strategic Partnership
- Trust Relationship

Questions & next actions





Deloitte refers to one or more of Deloitte Touche Tohmatsu Limited (“DTTL”), a UK private company limited by guarantee, and its network of member firms, each of which is a legally separate and independent entity. Please see www.deloitte.co.uk/about for a detailed description of the legal structure of DTTL and its member firms.

Deloitte LLP is the United Kingdom member firm of DTTL.

This publication has been written in general terms and therefore cannot be relied on to cover specific situations; application of the principles set out will depend upon the particular circumstances involved and we recommend that you obtain professional advice before acting or refraining from acting on any of the contents of this publication. Deloitte LLP would be pleased to advise readers on how to apply the principles set out in this publication to their specific circumstances. Deloitte LLP accepts no duty of care or liability for any loss occasioned to any person acting or refraining from action as a result of any material in this publication.

Deloitte LLP is a limited liability partnership registered in England and Wales with registered number OC303675 and its registered office at 2 New Street Square, London EC4A 3BZ, United Kingdom. Tel: +44 (0) 20 7936 3000 Fax: +44 (0) 20 7583 1198.