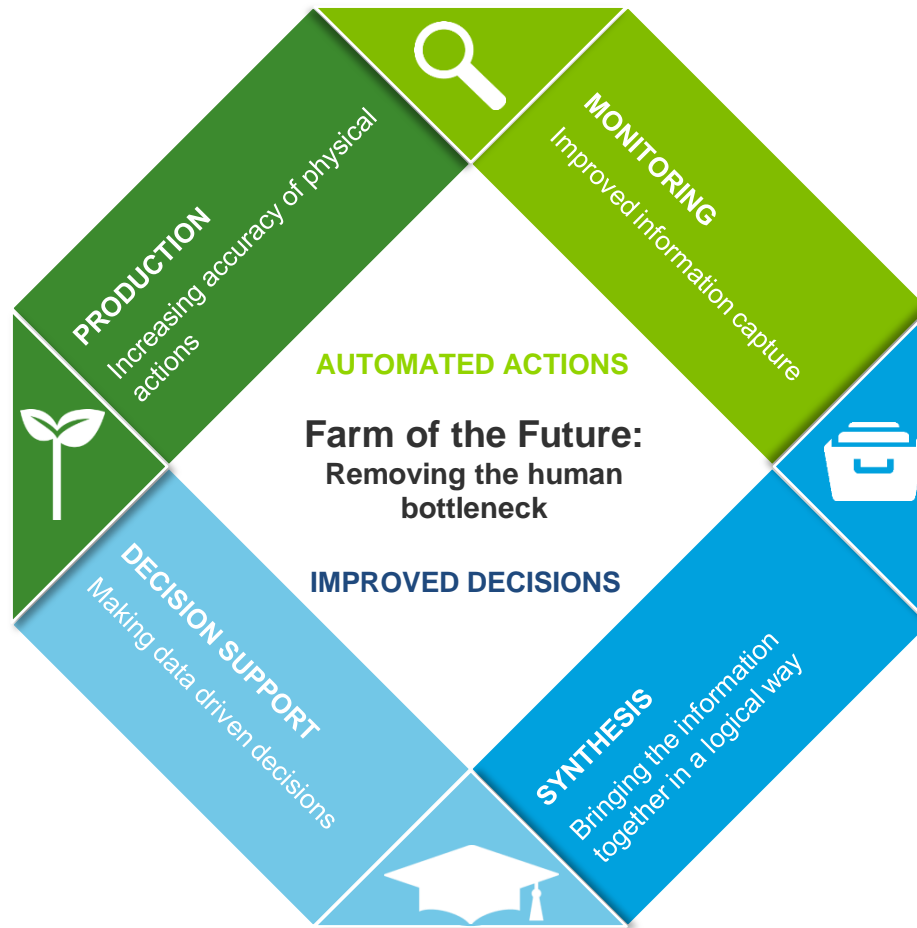


Removing the human bottleneck

Farm of the Future



Production

The increased the accuracy of physical actions on a farm, eliminating the farmer's inability to precisely control on farm equipment for extended periods at speed without interruption.

Monitoring

Improved information capture, eliminating the farmer's inability to collect detailed and highly accurate information all the time.

Decision support

Making data driven decision, eliminating the farmer's inability to use multiple years' worth of highly detailed information to drive production decisions and actions.

Synthesis

Bringing the information together in a logical way, eliminating the farmer's inability to store and organise information so that it is traceable, secure and easily accessible.