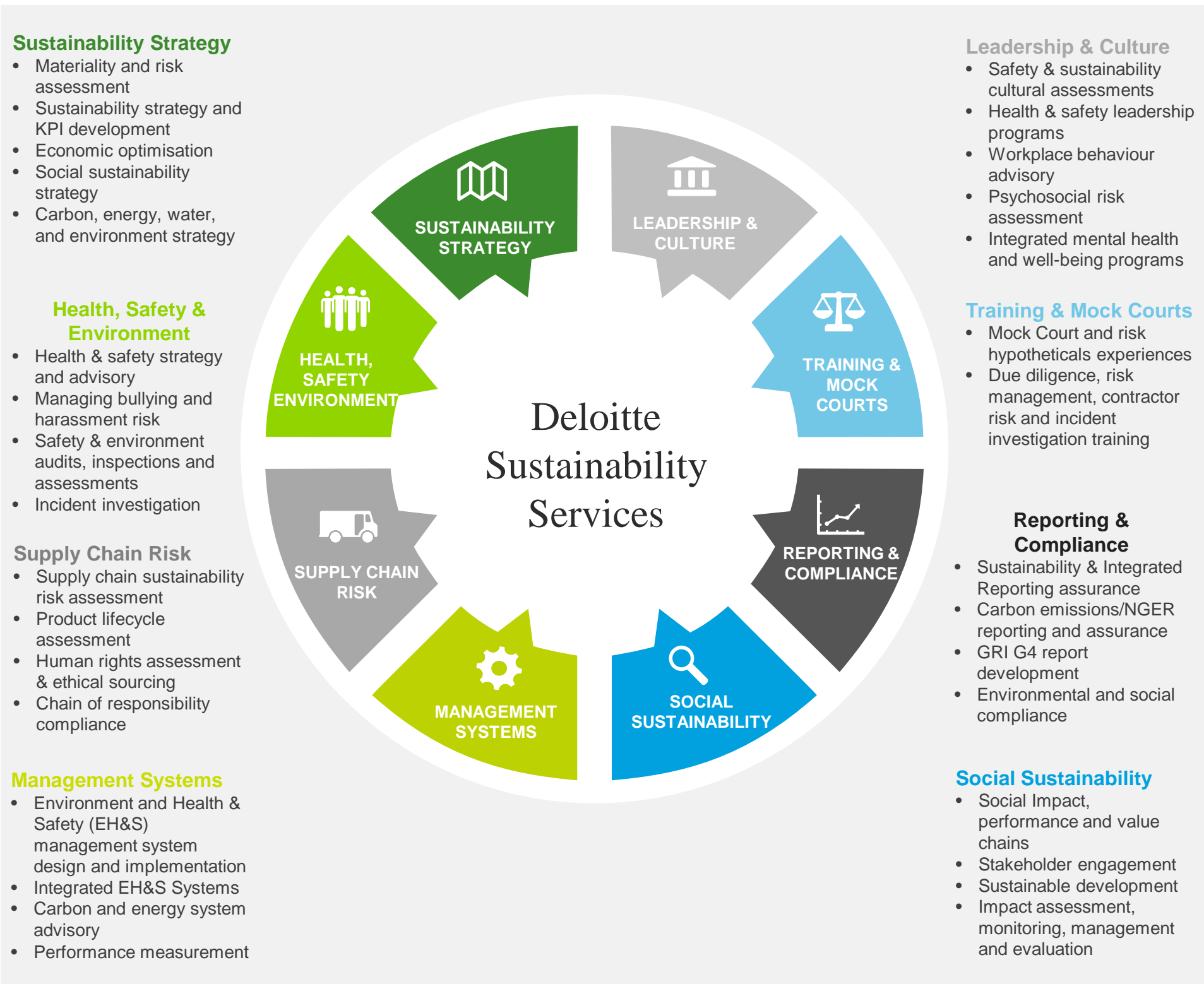


Sustainability Services

Here today for your tomorrow

Our purpose is simple: to support Australia to become a more sustainable country and society for the long term. Australia's economic and regulatory climate along with rapidly developing external trends are demanding an increasingly risk-focussed approach to sustainability whereby organisational strategies must be dynamic and readily adaptable to the changing landscape.

The deep, multi-disciplinary and cross-sector expertise of the Deloitte Sustainability Services team in Australia and across the Asia-Pacific region makes us ideally placed to help our clients proactively manage sustainability risks and opportunities, to stay ahead of competitors and meet evolving stakeholder expectations in an ever-changing world.





A changing landscape

COP21: Paris Agreement

On 12 December 2015, the world's first global climate change deal was finalised at COP21 in Paris. Highlights of the agreement included limiting global warming to well below 2°C, peaking global emissions as soon as possible and regular, transparent disclosure of country contributions.

Australia's COP21 commitments include an economy-wide target reduction in emissions by 26 to 28 per cent below 2005 levels by 2030, as well as commitments to innovation, renewables and green cities initiatives.

In the years to the next global progress stocktake in 2023, we can expect to see more focussed government policy and incentives around carbon, as well discussion on engagement in an international emissions trading scheme.

Sustainable Development Goals

Agreed at the UN Sustainable Development Summit in September 2015, the Sustainable Development Goals (SDGs) were introduced to replace the Millennium Development Goals (MDGs). The 17 goals for 2030 were developed in consultation with the private sector and include 169 targets across poverty, equality, environmental, safety and social issues.

The SDGs present a significant opportunity for businesses to align their sustainability priorities for cumulative impact, as well as providing opportunities for public-private partnerships.

In Australia, some companies are already beginning to incorporate the SDGs into their sustainability strategies and we expect to see further development of materiality assessments to identify priority focus goals.

Other key drivers

Highlights of other key drivers of the changing sustainability risk landscape include:

- *New trends* – Employee mental health and wellbeing, natural capital and social impact measurement, among others, continue to rise on the agenda as “on-trend” sustainability issues
- *Market conditions* – Turbulent times, particularly in Australia's extractive sector, present their own sustainability risks and opportunities
- *Investor concerns* – Investors are increasingly challenging boards on a range of sustainability issues
- *Stakeholder action* – External stakeholders also continue to challenge companies, resulting in reputational and financial risks as well as legal challenges to company license to operate.

Deloitte Sustainability Ranks #1

Deloitte was ranked first globally in brand preference for both sustainability consulting and sustainability assurance in November 2014 by independent research firm Verdantix (www.verdantix.com)

Key Contacts

Please contact one of our experienced partners to see how we can help you



Paul Dobson
Asia Pacific Lead Partner,
Sustainability Services
Phone: 02 9322 5422
Email: padobson@deloitte.com.au



Shailesh Tyagi
APAC Sustainability Partner,
Sustainability Services
Phone: 02 9322 5741
Email: shtyagi@deloitte.com.au



Tony Morris
National WHS Partner,
Sustainability Services
Phone: 02 9322 7570
Email: tonymorris@deloitte.com.au



Jane Magree
National Culture Change Partner,
Sustainability Services
Phone: 03 9671 6287
Email: jmagree@deloitte.com.au



Tharani Jegatheeswaran
Not-for-Profit & Social Impact Partner,
Consulting
Phone: 02 9322 7000
Email: tjegaatheswaran@deloitte.com.au

About Deloitte

Deloitte refers to one or more of Deloitte Touche Tohmatsu Limited, a UK private company limited by guarantee, and its network of member firms, each of which is a legally separate and independent entity. Please see www.deloitte.com/au/about for a detailed description of the legal structure of Deloitte Touche Tohmatsu Limited and its member firms.

Deloitte provides audit, tax, consulting, and financial advisory services to public and private clients spanning multiple industries. With a globally connected network of member firms in more than 150 countries, Deloitte brings world-class capabilities and high-quality service to clients, delivering the insights they need to address their most complex business challenges. Deloitte has in the region of 200,000 professionals, all committed to becoming the standard of excellence.

About Deloitte Australia

In Australia, the member firm is the Australian partnership of Deloitte Touche Tohmatsu. As one of Australia's leading professional services firms, Deloitte Touche Tohmatsu and its affiliates provide audit, tax, consulting, and financial advisory services through approximately 6,000 people across the country. Focused on the creation of value and growth, and known as an employer of choice for innovative human resources programs, we are dedicated to helping our clients and our people excel. For more information, please visit our web site at www.deloitte.com.au.

Liability limited by a scheme approved under Professional Standards Legislation.