



Remote Work Cyber Security

April, 2020



Nuran Kerimov
Managing Partner
Deloitte Azerbaijan

Tel: +994 (12) 404 12 10

E-mail: nkerimov@deloitte.az

Dear Sir/Madam,

Deloitte is closely monitoring developments in our country and the world. The well-being of our clients, people and society remains top priority for our firm. As businesses are being forced to rapidly rethink their strategies and operating models, we would like to show our support by putting together the most up-to-date recommendations from across the Deloitte international network to help your company address challenges and mitigate risks. We will be glad provide you with access to Deloitte's full range of services in purpose to support throughout this challenging time.

We have prepared this brochure as increasing number of our clients have to move their employees to work remotely. Such significant changes in operation is difficult itself. Especially when they are performed in such a limited period of time. As a majority of organizations are facing with number of issues, such as: equipment security misconfiguration, security patches are not applied timely, lack of user awareness, and many others.

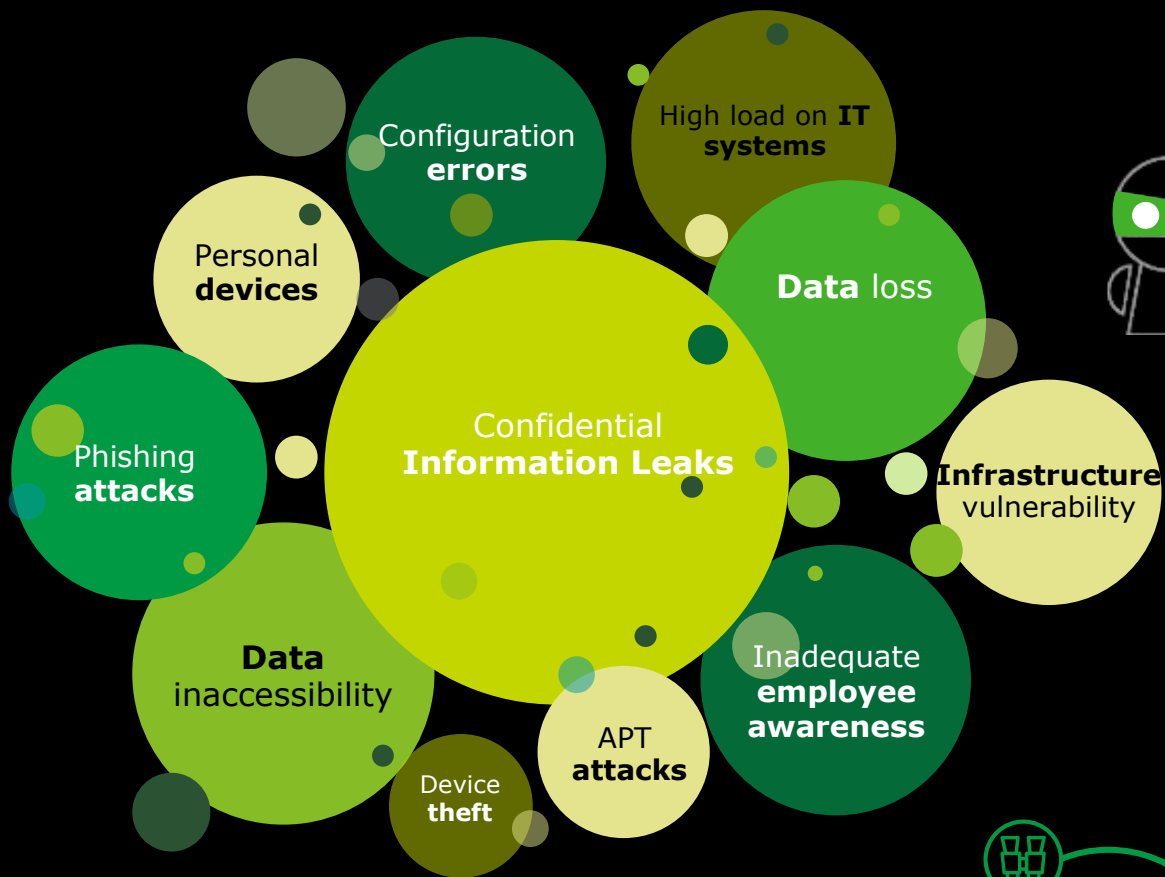
Here we will introduce the tools you need to quickly and properly respond against different kind of cyber security challenges upon Remote Working raised by the current situation. The details of our service offering can be viewed on the following slide.

We value relationship with your organization and will be happy to answer your questions related to Remote Work Security Assessment or other cyber risk matters.

Sincerely,

Nuran Kerimov

Cyber threats and risks when you moved to remote work



Why?

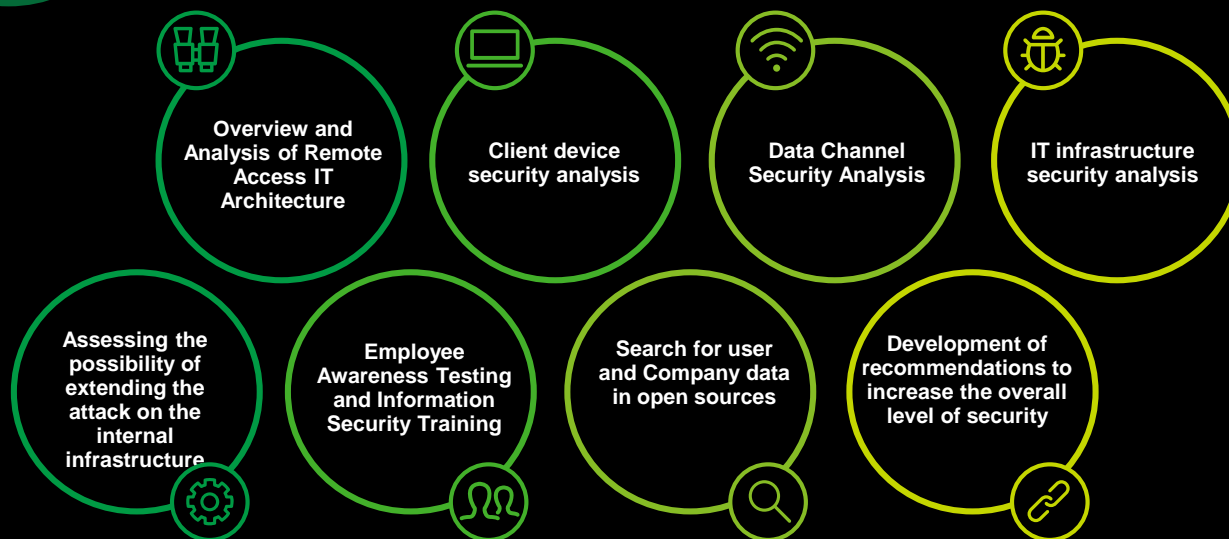
- Determine the current level of security and identify vulnerability
- Analyze and assess the risks of information security
- Determine the level of employee awareness of information security issues
- Assess the impact on the continuity of the main business processes of the Company
- Determine the safety level of IT systems
- Assess residual risk after comment elimination
- Develop countervailing measures for threats that could not be addressed



What do we offer?

Areas should be paid attention on?

- End devices
- IT infrastructure objects
- Data Channels
- Users and their awareness



Contacts:



Vladimir Remyga

Director

+994512060123

+77007145505

vremyga@deloitte.az

Our website:

https://www2.deloitte.com/az/en/services/risk0.html?icid=top_risk0



Gamar Gadimli

Senior Consultant

+994124041210

ggadimli@deloitte.az



deloitte.az

About Deloitte

Deloitte refers to one or more of Deloitte Touche Tohmatsu Limited, a UK private company limited by guarantee ("DTTL"), its network of member firms, and their related entities. DTTL and each of its member firms are legally separate and independent entities. DTTL (also referred to as "Deloitte Global") does not provide services to clients. Please see www.deloitte.com/about for a more detailed description of DTTL and its member firms.

Deloitte provides audit, consulting, financial advisory, risk management, tax and related services to public and private clients spanning multiple industries. Deloitte serves four out of five Fortune Global 500® companies through a globally connected network of member firms in more than 150 countries bringing world-class capabilities, insights, and high-quality service to address clients' most complex business challenges. To learn more about how Deloitte's approximately 312,000 professionals make an impact that matters, please connect with us on [Facebook](#), [LinkedIn](#), or [Twitter](#).

This communication contains general information only, and none of Deloitte Touche Tohmatsu Limited, its member firms, or their related entities (collectively, the "Deloitte Network") is, by means of this communication, rendering professional advice or services. Before making any decision or taking any action that may affect your finances or your business, you should consult a qualified professional adviser. No entity in the Deloitte Network shall be responsible for any loss whatsoever sustained by any person who relies on this communication.