



Mesures fiscales de soutien

Précompte immobilier Flandre

Dans ce document

Précompte immobilier: report de l'envoi des avertissements-extraits de rôle

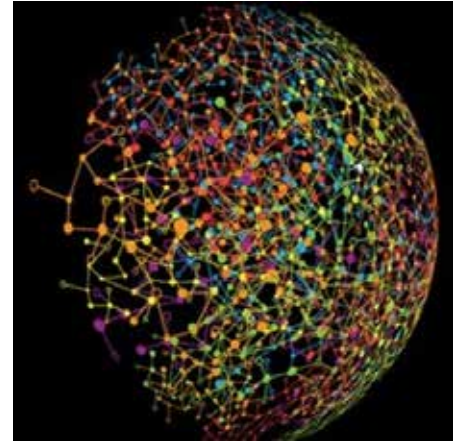
Précompte immobilier: report de l'envoi des avertissements-extraits de rôle

- Il a été décidé de postposer l'envoi des avertissements-extraits de rôle au précompte immobilier pour les entreprises afin d'éviter que les entreprises, de sorte à leur permettre ne se retrouvent dans des problèmes de liquidités.
- L'administration fiscale flamande (Vlabel) n'enverra les avertissements-extraits de rôle pour l'exercice d'imposition 2020 qu'à partir de septembre 2020 (au lieu de mai 2020).
- Cette mesure s'applique aux entreprises qui sont des personnes morales. Les entreprises unipersonnelles peuvent demander avec souplesse un plan de paiement et éventuellement une remise des intérêts de retard.

Lien vers le site

<https://belastingen.vlaanderen.be/coronamaatregelen-vlaamse-belastingdienst>

Combating COVID-19 with resilience



www.deloitte.com/COVID-19

Deloitte.

Deloitte refers to one or more of Deloitte Touche Tohmatsu Limited ("DTTL"), its global network of member firms, and their related entities (collectively, the "Deloitte organisation"), DTTL (also referred to as "Deloitte Global") and each of its member firms and related entities are legally separate and independent entities, which cannot obligate or bind each other in respect of third parties. DTTL and each DTTL member firm and related entity is liable only for its own acts and omissions, and not those of each other. DTTL does not provide services to clients. Please see www.deloitte.com/about to learn more.

Deloitte is a leading global provider of audit and assurance, consulting, financial advisory, risk advisory, tax and related services. Our global network of member firms and related entities in more than 150 countries and territories (collectively, the "Deloitte organisation") serves four out of five Fortune Global 500® companies. Learn how Deloitte's approximately 312,000 people make an impact that matters at www.deloitte.com.

This communication contains general information only, and none of Deloitte Touche Tohmatsu Limited ("DTTL"), its global network of member firms or their related entities (collectively, the "Deloitte organisation") is, by means of this communication, rendering professional advice or services. Before making any decision or taking any action that may affect your finances or your business, you should consult a qualified professional adviser.

© 2020. For information, contact Deloitte Accountancy. Designed and produced by the Creative Studio at Deloitte, Belgium