



Fact sheet – TOTAL Group Belgian HQ, Rue de l'Industrie 52 – ETMOFINA sa

ASSET DESCRIPTION

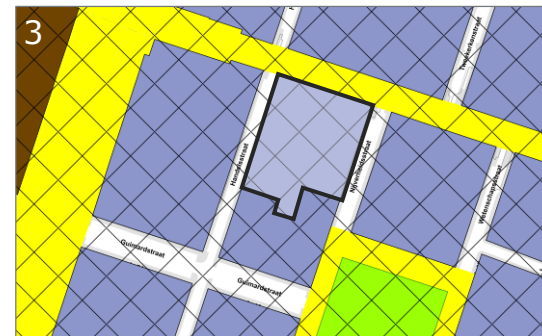
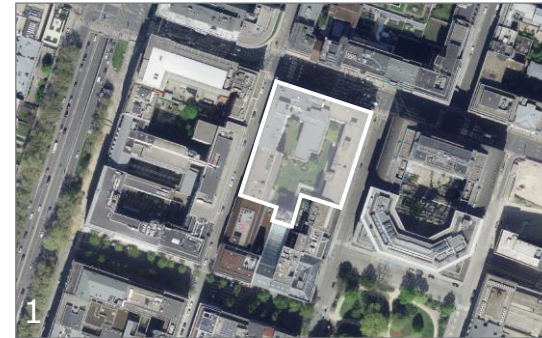
Total Group Belgian HQ buildings are located in the heart of the European district between Rue de la Loi (33), Rue du Commerce (93-113), Rue de l'Industrie (48-52) and Rue Guimard (14).

The cadastral matrix's sections and radicals (as described on BruGIS) of the land parcels detained by Etmofina SA are: 193F, 187E, 190H, 189N, 189S, 195G. The cadastral parcel 189S (indicated in red on picture 2) representing 475 sqm is a co-ownership between Etmofina SA and Banque Degroof-Petercam (respectively 83% and 17%). The areas of Banque Degroof located on the groundfloor and the first basement are mainly used for car parking and for archives storage.

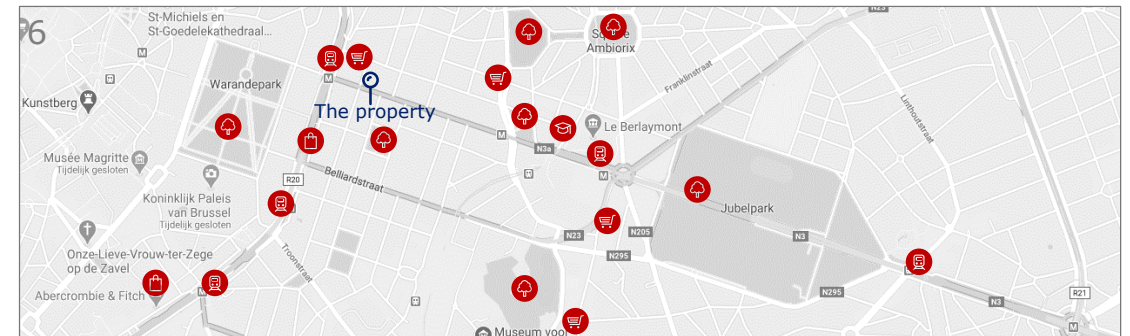
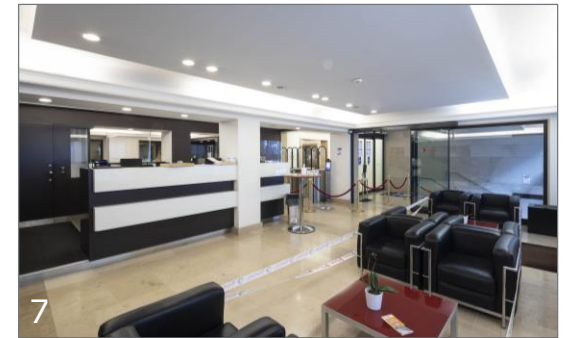
Total Group Belgian HQ buildings offer three basement floors (including 238 car parking units and 80 bikes parking units) and five above ground floors. The land area amounts to 5,602 sqm; and gross above-ground building area amounts to ca. 25,860 sqm. The environmental permit is valid until 27/01/2027.

Total Group Belgian HQ is included in "Ilot G", which is part of the Plan d'Aménagement Directeur (PAD) Loi. Further explanations about PAD Loi can be obtained at Perspective Brussels.

LOCATION



PICTURES & VICINITY



- Parks
- Public transport
- Supermarkets
- Shops
- Schools