

HealthInteractive HIE

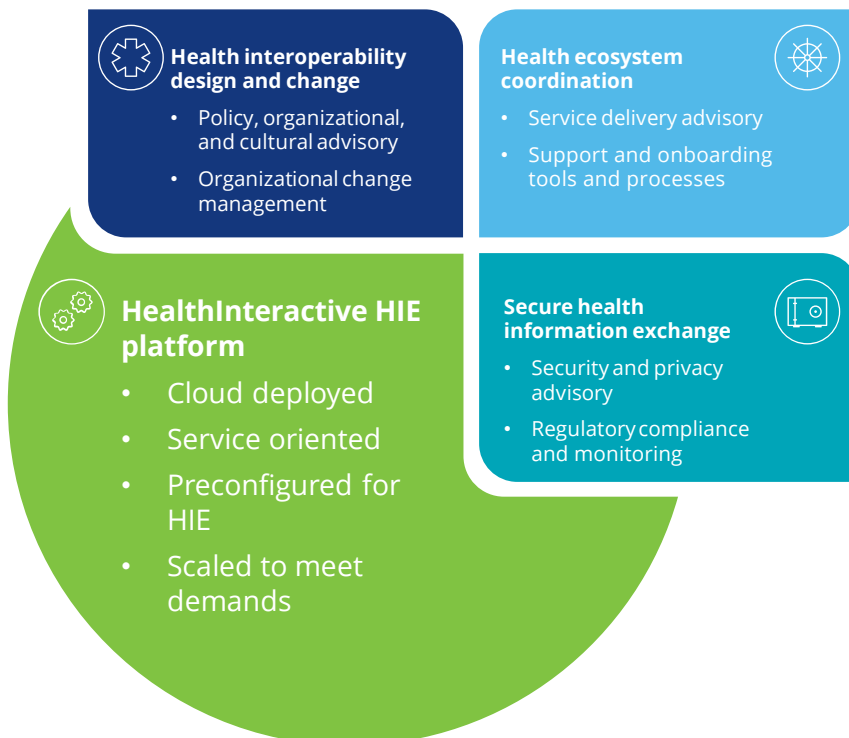
An end-to-end solution galvanizing the healthcare ecosystem



Integrating healthcare ecosystems are notoriously complex, routinely overburdened and have many barriers to partner participation. The complex and opaque procedures to enabling partners and legacy technology make current solutions unpleasant to use. More importantly, they can lead to costly mistakes in terms of massive inefficiencies and risk of clinical errors.

This is why Deloitte has committed to creating HealthInteractive HIE: the fastest, most transparent, most secure, and most advanced health information exchange (HIE) system available.

Figure 1: Bringing together healthcare components, across clinical, people, technology, and processes.



Deloitte's HealthInteractive HIE does it all:

1. Invest in better tools and streamlined processes

a. Get operational—fast

Deloitte's decades-long experience in HIE technologies has resulted in HealthInteractive HIE's paint-by-numbers HIE configuration; the processes you need are already built in. It used to take years to become operational but with HealthInteractive HIE you can be up and running within a few short months.

b. Streamline partner onboarding

As much as 62 percent of effort spent becoming operational is dedicated to onboarding vendors and participants. HealthInteractive HIE provides self-service integration for all parties, ensuring that onboarding is standardized, and system interactions are fast and efficient.

c. Enjoy the benefits of transparency

Through transparent mechanisms, the typical burdens of operations management can be expedited with ease. Solutions are found faster and issues are resolved more quickly as participants are able to drill down from high-level views of the entire system to individual workflows and messages with just a few clicks.

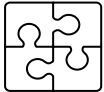
d. Secure sensitive information

HealthInteractive HIE is cloud-based, providing an appropriate level of security for all partners. It provides each participant with a customizable window onto a wealth of data, ensuring that the right information gets to the right people at the right time—securely.



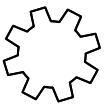
Scalable efficiency

No matter what level of health ecosystem being integrated, HealthInteractive HIE scales to deliver.



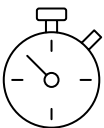
Cloud deployed

One central secure solution, but not in one place. Cloud-based solutions offer unparalleled reliability and security.



Preconfigured for you

No need to build from the ground up. Get operational faster, with most of your requirements built in.



Service oriented

Deliver efficiently and effectively with an HIE designed for the services you provide.



Designed for speed

With up to 700 transactions per second, HealthInteractive HIE distributes a wealth of data lightning fast.

2. Break down barriers

A healthcare ecosystem isn't merely made up of its many participants; it exists within a larger legislative framework. Interactions occur across tough-to-navigate organizational boundaries. Deloitte's global health practice is deeply involved in the broader levels of healthcare ecosystems, such as legislation and regulation, organizational and clinical design, standards and practices, privacy and security, and technical implementation. Leveraging this, HealthInteractive HIE is truly an end-to-end solution supporting the healthcare ecosystem's broader goals.

3. Access unparalleled support

Our team is dedicated and knowledgeable. We have gained experience all over the world in the past 20 years in the healthcare integration, from strategy to operation, policy to technology. We have implemented HIE solutions on four continents. These include populations of up to 20 million people and their corresponding healthcare data, connected with more than 30,000 providers. HealthInteractive HIE is more than just technology; it's access to unrivalled experience and support.

