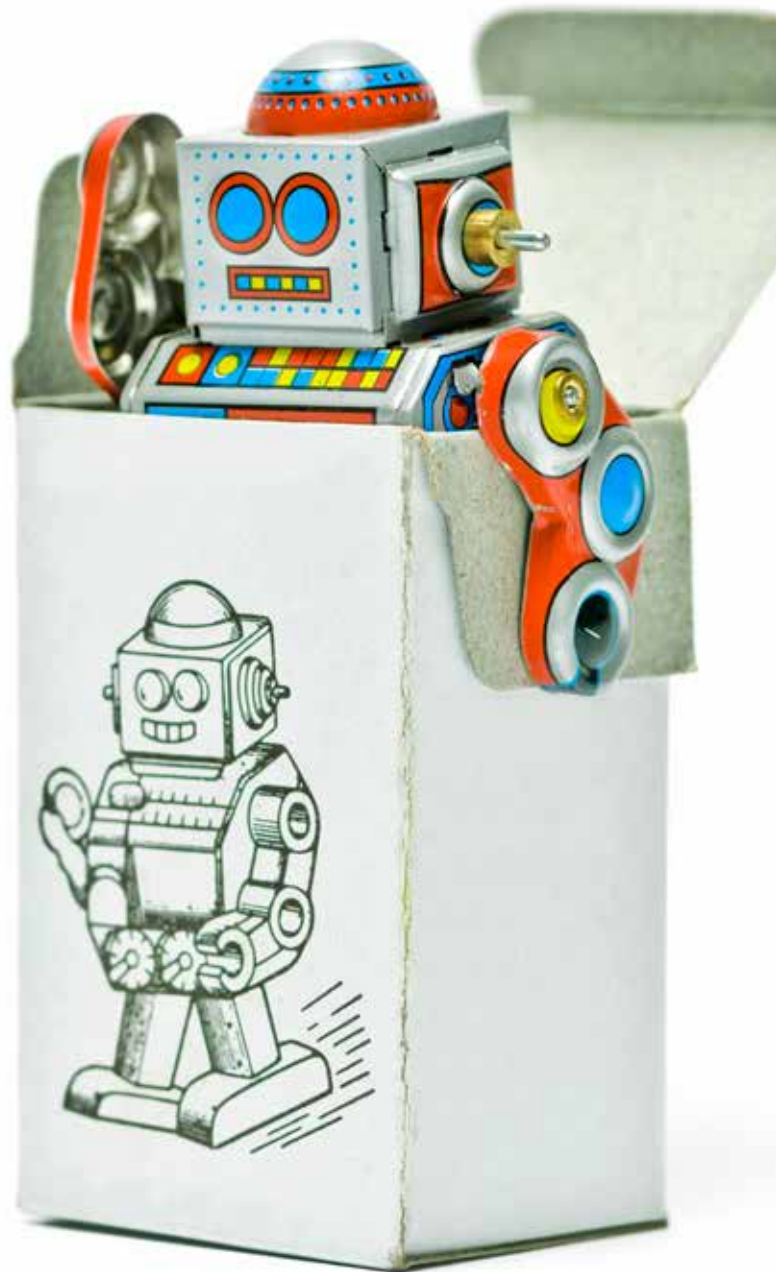


Assetbox  
The future of  
asset management  
out of a box



# Assetbox?

## Driven by reality, inspired by a vision

The asset management market is facing continuous change: the growing competition and the launch of various European and Swiss regulatory initiatives increase the complexity of daily business. Outflows of assets under management and additional regulatory requirements increase pressure on margins. As a result, many Swiss asset managers will not be able anymore to meet the growing requirements of institutional investors and regulators on their own.

We have therefore developed the “asset out of a box”. We call it the Assetbox. It is a unique combination of service modules for asset managers to complement their organisation and operations. We support you in creating and running a successful and economical operating model while meeting all applicable regulatory requirements and investor expectations.

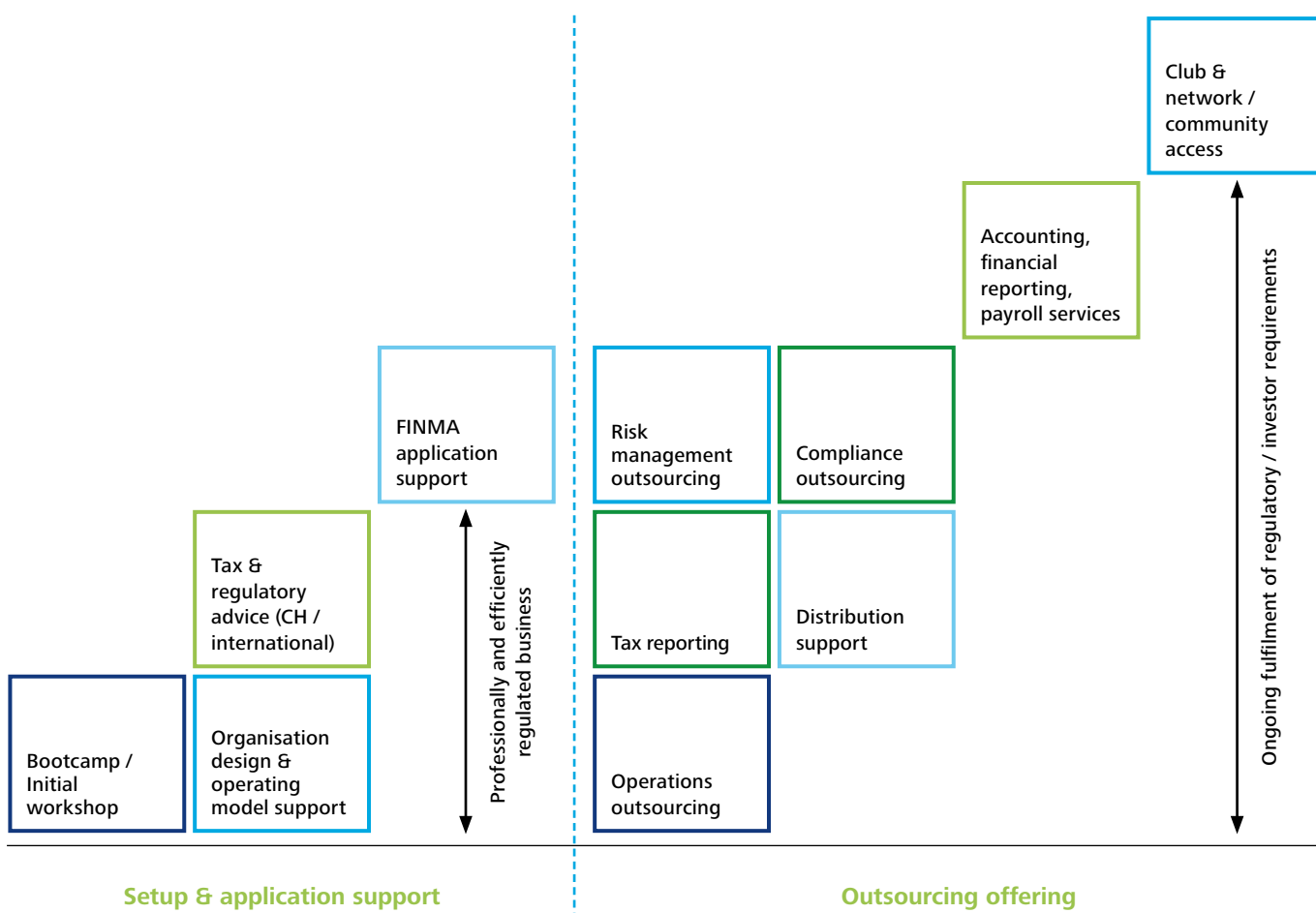
The Assetbox will allow you to focus on your core strength while we take care of all the rest.

## A unique partnership

Deloitte and Etops have combined and integrated their operations and consulting service offerings to create the most comprehensive range of regulatory, operations and compliance outsourcing for asset managers available in the market.

Our objective is to provide our clients with the required competence, additional substance and automated solutions at competitive prices to become a state-of-the-art asset manager.

## Tailored service modules ...



---

By combining our leading consulting expertise with operational outsourcing, we have created an “asset manager out of a box”, allowing our clients to concentrate on their core competencies while we take care of all the rest.

# ... with relevant content to choose from

---

Bootcamp / initial workshop	Before starting to formally work with you we want to go through the essentials of your organisation and discuss the basic requirements and how they could be met. We will work out an action plan with key elements and a realistic implementation timetable for you.
Organisation design & operating model support	Our specialists analyse your organisation and, based on your strategic needs and business objectives, will work out a tailored organisational design that will satisfy the business and regulatory requirements.
Tax & regulatory advice (CH / international)	Be it part of setting up your management company, launching new products or simply as part of ongoing monitoring, regulatory and tax considerations are key factors to consider. Our tax and regulatory specialists will take care of this for you.
FINMA application support	We will establish all required organisational and legal documents and contracts required for a successful application. We take care of the project management of the whole process, maintain contact with FINMA, support the preparation of license application and support in the selection of, and the coordination with, the application auditor.
Operations outsourcing	We provide you with a full outsourcing of your middle and back office activities, perform shadow accounting and provide you with bespoke reporting giving you the in- and oversights you need. This service is based on a specialised asset management software and customized to your specific needs.
Tax reporting	We will take care of the preparation of international tax reporting for most countries in Europe, the US, Asia and Africa.
Distribution support	Our unique fund distribution support is a comprehensive approach to master national and international distribution issues such as notification, passporting and ongoing monitoring of existing registrations. We register your products in different markets, produce high quality KIID and SRRI calculation, and make sure all your documents are up to date. With our efficient automated reporting engines we will take care of UCITS, AIFMD and other regulatory reporting.
Risk management outsourcing	You can delegate risk management activities, be it a more operational role complementing your team with specialist skills up to a full outsourcing of the risk management function under the Collective Investment Scheme Act (CISA).
Compliance outsourcing	We will support your team with specific compliance related questions or we will provide a Compliance Officer to your organisation. We will help you with setting up an appropriate compliance framework and respective policies, internal as well as external reporting such as FINMA ad hoc reporting duties.
Accounting, financial reporting, payroll services	Our accounting and payroll specialists are taking care of preparing and reviewing accounting and financial reporting of statutory and GAAP financial statements under most commonly known frameworks as well as payroll and global employer services.
Club & network / community access	Asset managers operating on the Assetbox are part of an exclusive community as they fulfil quality and industry standards. We will include them in our network of partners, investors and service providers bringing many added benefits to you.

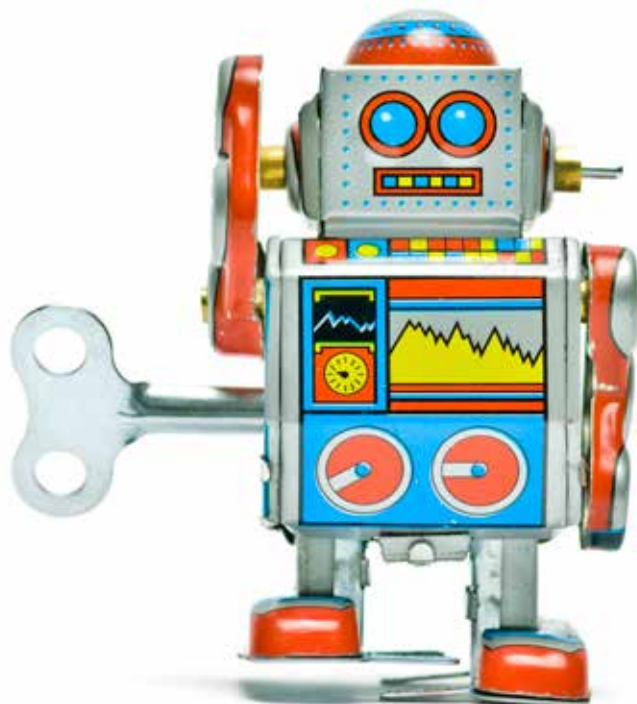
---

# Our unique value proposition

The Assetbox combines a European-wide unique range of consulting and outsourcing services. Hedgefunds and alternative asset managers as well as managers of traditional asset classes can supplement their organisation with processes and know how as required. This tailored and cost efficient set up will allow even smaller providers currently lacking some of the in-house resources to meet the rising regulatory requirements (i.e. by FINMA).

## Your benefits

- The platform offers a unique and complete solution for managers to comply with all existing and upcoming regulatory requirements and investor expectations.
- Integration of extensive regulatory know how of a professional services firm with an operational portfolio and risk management platform, ready for asset managers to use.
- Independence from usual service providers (banks, prime brokers, administrators) removes any potential conflict of interest.
- Assetbox as a partner will label asset managers as state-of-the-art organisations, increasing client credibility and acceptance by regulators.
- Cost efficiencies: Choose and complement your tailored institutional set up with the modules you require at lower costs than any in-house solution.
- Enhanced visibility and impact by joining the community of Assetbox as asset managers will benefit from Deloitte's and Etop's' wide professional network in the asset manager industry (sell and buy side).



---

“Michael and I are confident, that our services offer everything an asset manager needs to be successful in today's market environment as well as to meet any future challenges.”

**Marcel Meyer**  
Partner, Deloitte

---

Deloitte is the brand under which tens of thousands of dedicated professionals in independent firms throughout the world collaborate to provide audit, consulting, financial advisory, risk management, and tax services to selected clients. Deloitte has a straightforward goal: to be recognized as the preeminent and most trusted professional services firm, famous for the calibre of our people and respected for the exceptional quality of our work.

Deloitte refers to one or more of Deloitte Touche Tohmatsu Limited (“DTTL”), a UK private company limited by guarantee, and its network of member firms, each of which is a legally separate and independent entity. Please see [www.deloitte.com/ch/about](http://www.deloitte.com/ch/about) for a detailed description of the legal structure of DTTL and its member firms.

Deloitte AG is a subsidiary of Deloitte LLP, the United Kingdom member firm of DTTL.

Deloitte AG is recognised as auditor by the Federal Audit Oversight Authority and the Swiss Financial Market Supervisory Authority.

This publication has been written in general terms and therefore cannot be relied on to cover specific situations; application of the principles set out will depend upon the particular circumstances involved and we recommend that you obtain professional advice before acting or refraining from acting on any of the contents of this publication. Deloitte AG would be pleased to advise readers on how to apply the principles set out in this publication to their specific circumstances. Deloitte AG accepts no duty of care or liability for any loss occasioned to any person acting or refraining from action as a result of any material in this publication.

© 2013 Deloitte AG. All rights reserved.

Designed and produced by The Creative Studio at Deloitte, Zurich. 31161A

---