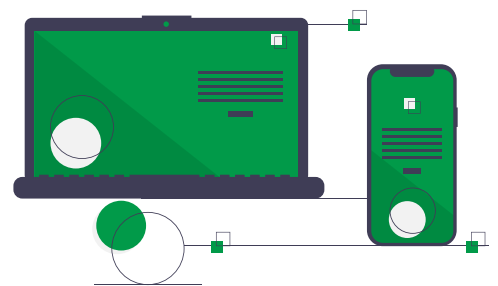


The KYC Utility: Due Diligence Module

The Deloitte-engineered AML/KYC solution compiles comprehensive data pools in order to generate reliable and efficient risk assessments for your client relationships, fulfilling all regulatory requirements and enabling new lead generation.



The RegTech solution that provides real added value

Focus your core business - Increase time for client and market development activities

- Perform smart plausibility checks and enhance client experience with shortened “time-to-yes”
- Increase work efficiency and free up sales force time for new business development and market initiatives
- Detect new data-induced opportunities, thereby generating additional leads

Identify your “A” clients - Manage your client portfolio based on true business opportunities

- Collect, track and update relevant information and gain advanced insights into your client relationships in order to identify priority clients
- Drive business opportunities systematically by using the most up-to-date and accurate information

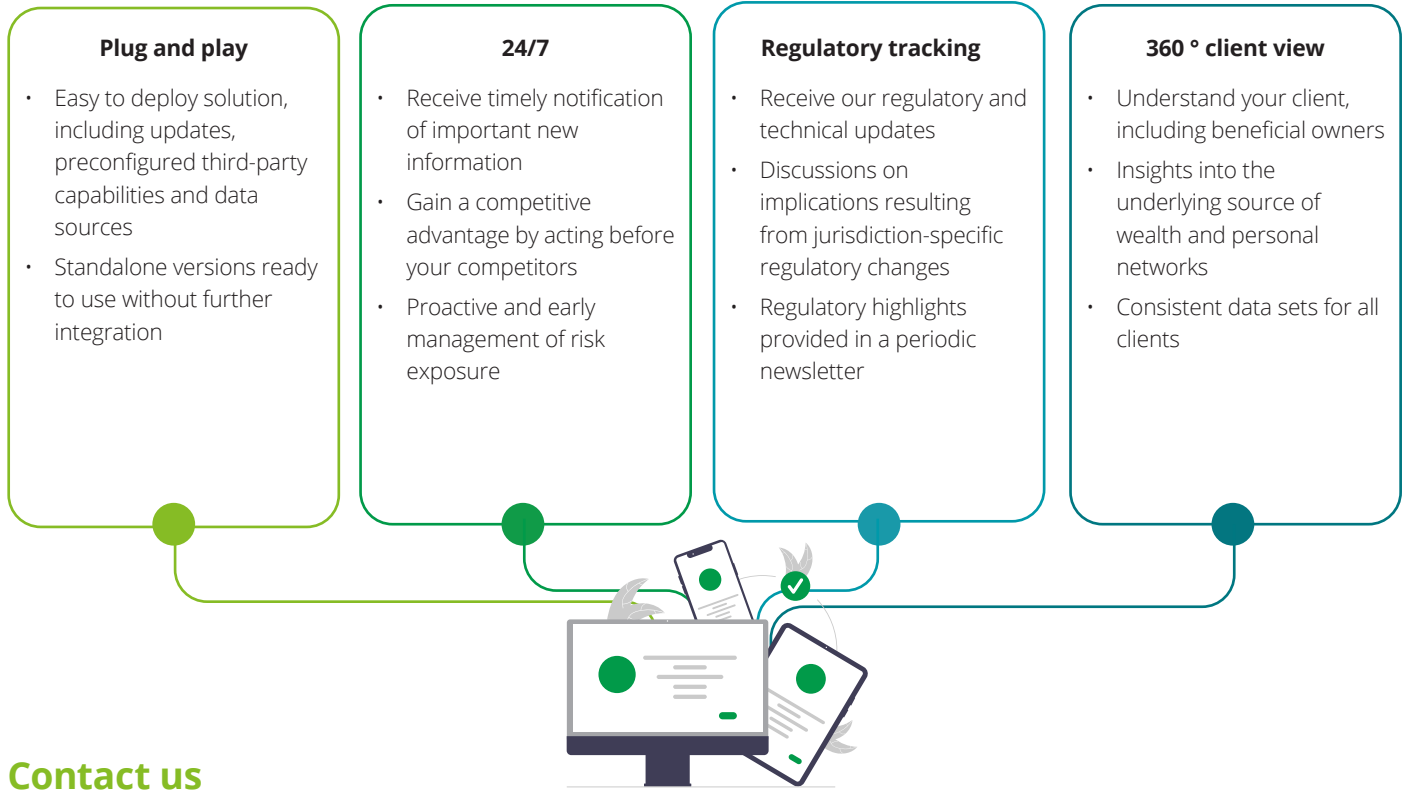
Automate your value creation - Ensure seamless and efficient workflow processing

- Accelerate your day-to-day work through standardised, rule-based workflow processing
- Significantly reduce your time spent while enhancing the quality of your work

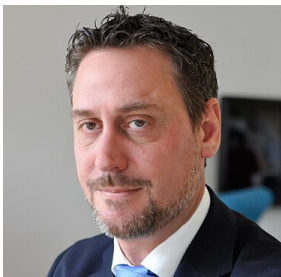
Digitalise your way of working - Manage regulatory complexity with the Deloitte standard approach

- Transform reactive into preventive mitigation measures
- Establish end-to-end transparency on internal rules
- Use standardised procedures to help users produce highly consistent work
- Gain access to a proven approach and the latest regulatory updates

What makes us unique



Contact us



Micha Bitterli
Partner Head Managed Services

Deloitte Managed Services
Tel.: +41 (0) 58 279 7310
Email: mbitterli@deloitte.ch
Micha has over 15 years of experience in regulation and audit as well as relationships to national and international regulatory bodies.



Toni Pisa
Director Solution Design

Deloitte Managed Services
Tel.: +41 (0) 58 279 7793
Email: tpisa@deloitte.ch
Toni has over 10 years of experience in audit and IT development as well as key knowledge of software supplier tools.

[Visit us here](#)

<https://www2.deloitte.com/ch/en/pages/financial-services/solutions/aml-kyc-compliance-utility-solution.html>

This publication has been written in general terms and we recommend that you obtain professional advice before acting or refraining from action on any of the contents of this publication. Deloitte Consulting AG accepts no liability for any loss occasioned to any person acting or refraining from action as a result of any material in this publication.

Deloitte Consulting AG is an affiliate of Deloitte NSE LLP, a member firm of Deloitte Touche Tohmatsu Limited, a UK private company limited by guarantee ("DTTL"). DTTL and each of its member firms are legally separate and independent entities. DTTL and Deloitte NSE LLP do not provide services to clients. Please see www.deloitte.com/ch/about to learn more about our global network of member firms.