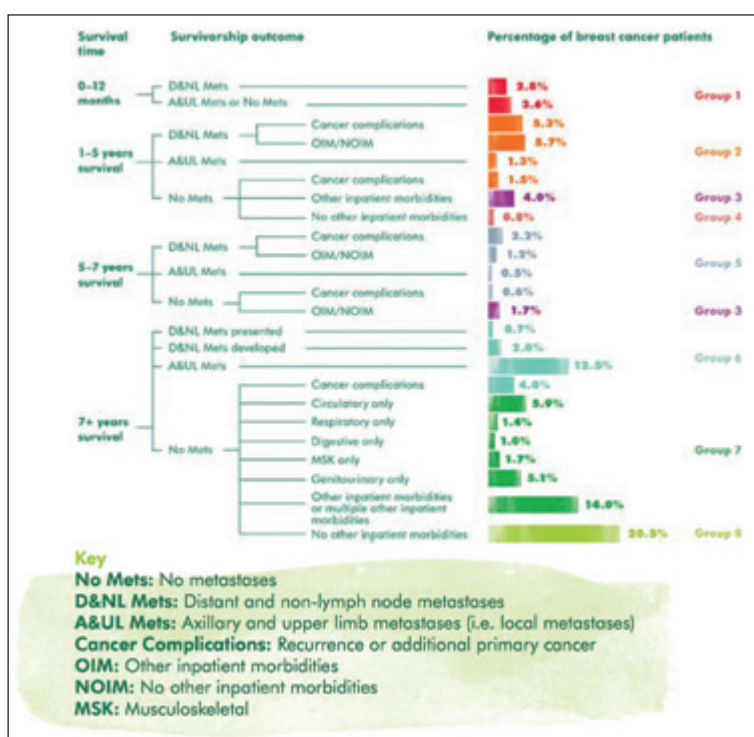


Focus on Building Pathway Analytics

Project objectives and context

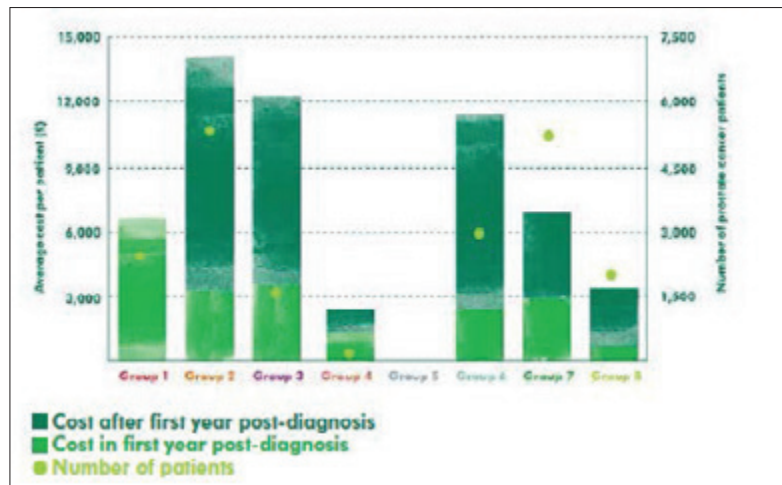
- Monitor Deloitte has enjoyed a long-running partnership with Macmillan Cancer Support and the National Cancer Intelligence Network (NCIN) to build “the most detailed map of cancer survivorship yet”.
- Historical approaches to analysing cancer outcomes in the UK have focused on the impact of point interventions, often in isolation of variance in the real world brought about by social factors, geographical inconsistencies in clinical practice, and by the impact of comorbidities. Our ‘Routes from Diagnosis’ methodology is a new approach to explore and quantify patient journeys following a cancer diagnosis – providing a more holistic picture of patient experience.
- This methodology is being used to transform care and improve the outcomes and experience of those living with and beyond cancer by:
 - creating an evidence base of current patient outcomes, and long-term trends, to support successful planning of cancer services;
 - identifying opportunities to tailor services to meet different health and support needs of people living with and beyond cancer; and
 - forecasting the impact of service redesign initiatives on outcomes and cost of care thereby supporting the prioritisation of change.

Figure 1. Detailed survivorship outcomes framework for breast cancer



Reference: Macmillan Cancer Support (2014) *Routes from Diagnosis*.
<http://www.macmillan.org.uk/Documents/AboutUs/Research/Researchandevaluationreports/Routes-from-diagnosis-report.pdf> (Last accessed: 21st May 2015)

Figure 2. Average post-diagnosis inpatient cost for prostate cancer patients, split by simplified survivorship outcome group



Reference: Macmillan Cancer Support (2014) *Routes from Diagnosis*.
<http://www.macmillan.org.uk/Documents/AboutUs/Research/Researchandevaluationreports/Routes-from-diagnosis-report.pdf> (Last accessed: 21st May 2015)

Contact

For further information, please contact Hanno Ronte, Partner, Monitor Deloitte UK.
 Office: +44 (0) 20 7007 2540 Email: hronte@deloitte.co.uk

Findings

- Quantified the financial impact of survivorship by outcome group and treatment phase.
- Analysis revealed that, for certain groups, survivorship costs were greater than costs incurred during treatment phase.
- Identified marked differences in the length of time and the amount of costs in each of the cancer care pathway stages, highlighting opportunities for targeted improvement.

Impact

- Findings were presented at NCIN Cancer Outcomes Conferences, published by Macmillan in an external report, and were covered by the BBC and the Guardian newspaper. Routes from Diagnosis also won a High Commended award at the HSJ Awards 2015.
- These insights have supported a comprehensive service redesign programme.

Deloitte refers to one or more of Deloitte Touche Tohmatsu Limited (“DTTL”), a UK private company limited by guarantee, and its network of member firms, each of which is a legally separate and independent entity. Please see www.deloitte.co.uk/about for a detailed description of the legal structure of DTTL and its member firms.

Monitor Deloitte refers to Monitor Company Europe, a subsidiary of Deloitte LLP, the United Kingdom member firm of DTTL.

This publication has been written in general terms and therefore cannot be relied on to cover specific situations; application of the principles set out will depend upon the particular circumstances involved and we recommend that you obtain professional advice before acting or refraining from acting on any of the contents of this publication. Monitor Deloitte would be pleased to advise readers on how to apply the principles set out in this publication to their specific circumstances. Monitor Deloitte accepts no duty of care or liability for any loss occasioned to any person acting or refraining from action as a result of any material in this publication.

© 2015 Monitor Company Europe. All rights reserved.

Monitor Company Europe is registered in England & Wales with registered number 1906410. Registered office: Hill House, 1 Little New Street, London, EC4A 3TR.

Designed and produced by The Creative Studio at Deloitte, London. 44465A