



## 敬贺佳节

为继续支持环保，德勤以电子贺卡向您恭贺圣诞，取代邮寄印刷贺卡。

请点击[德勤优酷网页](#)或[德勤官网](#)接收德勤圣诞贺卡。



Deloitte (“德勤”)泛指一家或多家德勤有限公司(即根据英国法律组成的私人担保有限公司,以下称“德勤有限公司”),及其成员所网络和它们的关联机构。德勤有限公司与其每一家成员所均为具有独立法律地位的法律实体。德勤有限公司(又称“德勤全球”)并不向客户提供服务。请参阅[关于德勤](#)中有关德勤有限公司及其成员所更为详细的描述。

### 隐私

感谢您对德勤中国服务的关注。德勤中国希望可以继续使用您的个人资料(特别是姓名及联系信息),以向您发送市场和政策最新动态,以及由德勤中国举办、赞助或宣传之研讨会及其他活动的邀请函。如您日后不希望收到由德勤中国发出的信息,请回复电邮并在邮件主题栏中填上“Unsubscribe”。

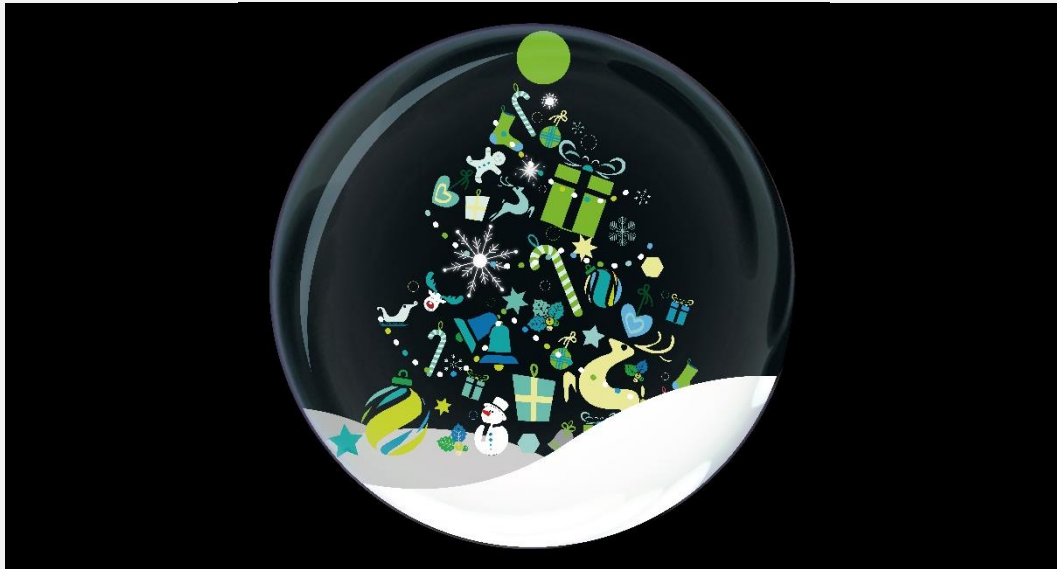
如欲更新您的个人资料,请[点击](#)此处。

德勤中国泛指德勤·关黄陈方会计师事务所(香港)、德勤·关黄陈方会计师事务所(澳门)、德勤华永会计师事务所(特殊普通合伙)(中国大陆)以及其于香港、澳门及中国大陆从事业务之关联机构。

本通信中所含内容乃一般性信息,任何德勤有限公司、其成员所或它们的关联机构(统称为“德勤网络”)并不因此构成提供任何专业建议或服务。任何德勤网络内的机构均不对任何方因使用本通信而导致的任何损失承担责任。

© 2016 德勤·关黄陈方会计师事务所(香港)、德勤·关黄陈方会计师事务所(澳门)、德勤华永会计师事务所(特殊普通合伙)(中国大陆)版权所有 保留一切权利。

如您日后不希望收到关于该话题的信息,请回复电邮并在邮件主题栏中填上“取消订阅”。



## Season's greetings

To preserve the environment, we are sending our Christmas good wishes in the form of an e-card instead of printed cards.

You can access the animated e-card from Deloitte on our [Youku](#) page or our [official website](#).



Deloitte refers to one or more of Deloitte Touche Tohmatsu Limited, a UK private company limited by guarantee ("DTTL"), its network of member firms, and their related entities. DTTL and each of its member firms are legally separate and independent entities. DTTL (also referred to as "Deloitte Global") does not provide services to clients. Please see [About Deloitte](#) for a more detailed description of DTTL and its member firms.

### Privacy

Thank you for your interest in Deloitte China services. Deloitte China would like to continue to use your personal information (in particular name and contact details) for the purpose of sending you marketing and regulatory updates, invitations to seminars and other events organized, sponsored or promoted by Deloitte China. If you do not wish to receive further communications from Deloitte China, please send a return email to the sender with the word "Unsubscribe" in the subject line.

If you would like to update your personal information, please click [here](#).

Deloitte China refers to Deloitte Touche Tohmatsu in Hong Kong, Deloitte Touche Tohmatsu in Macau, Deloitte Touche Tohmatsu Certified Public Accountants LLP in the Chinese Mainland and their respective affiliates practising in Hong Kong, Macau and the Chinese Mainland.

This communication contains general information only, and none of Deloitte Touche Tohmatsu Limited, its member firms, or their related entities (collectively the "Deloitte Network") is by means of this communication, rendering professional advice or services. None of the Deloitte Network shall be responsible for any loss whatsoever sustained by any person who relies on this communication.

© 2016 Deloitte Touche Tohmatsu in Hong Kong, Deloitte Touche Tohmatsu in Macau, and Deloitte Touche Tohmatsu Certified Public Accountants LLP in the Chinese Mainland. All rights reserved.

To no longer receive emails about this topic please send a return email to the sender with the word "Unsubscribe" in the subject line.