



Czech Republic Capabilities

2024



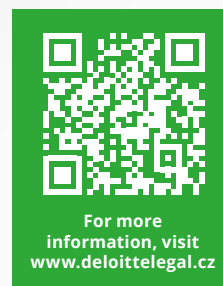
Our Firm

Our team comprises of more than **60 specialists with high legal qualifications in 6 offices across the country, we are one of the largest law firms on the Czech market.** However, beyond the numbers, it is the vision of creating value for clients that drives our distinctive **team of lawyers experienced in all major law areas.** We stand side by side with our clients providing the guidance they need in **solving complex legal and business issues. Our success is built on our clients' success.**

With a deep understanding of our clients' businesses and the industries they operate in, our work is driven by their need for outstanding legal and commercial advice. Combining legal knowledge with industry expertise and a multidisciplinary approach, further enabled by **Deloitte's audit, assurance, consulting, financial advisory, risk advisory, tax and related services,** our lawyers provide sound advice that helps clients achieve their ambitions.

“
They are here for us. They try to find solutions while properly pointing out the associated risks
 ”

Legal 500 Europe 2021



Practices

We are a fully fledged law firm, covering all legal practices, which rank amongst the best on the market. Employing a multidisciplinary approach, our lawyers are uniquely positioned to serve their clients' legal and business needs.

We work together across offices and practice areas in integrated, multidisciplinary teams to provide our expertise generating great results for our clients.

- | | |
|----------------------------|--|
| Banking & Finance | Intellectual Property |
| Business Integrity | Mergers & Acquisitions |
| Commercial Law | Private Clients |
| Competition Law | Public Procurement & PPP |
| Corporate Law | Public Regulation |
| Data Privacy | Real Estate |
| Dispute Resolution | Restructuring, Bankruptcy and Insolvency |
| Employment law & Benefits | Sports Law |
| Environmental Law | Tax Litigation |
| Information Technology Law | Telecommunication & Media |

Industries

Our lawyers have a wide range of practice that allows them to apply their extensive industry expertise to best serve their clients' business needs.

In addition, they leverage the knowledge of other Deloitte advisory teams that are among the market leaders.

- | | |
|------------------------------------|----------------------------------|
| Automotive | Information technology |
| Banking, Finance & Capital Markets | Insurance |
| Consumer products | Public Services |
| Energy & Environment | Real Estate & Construction |
| Entertainment, Film & Media | Retail & E-commerce |
| Esport | Telecommunication |
| Fintech | Transport & Logistic |
| Healthcare & Lifescience | Venture Capital & Private Equity |
| Industrial Products | |

Czech & Slovak Cluster

The geographical proximity, shared history and common identity engraved in our people and businesses, call for a **unified approach to Czech and Slovak clients.**

Therefore, we offer seamless, fully integrated and regionally driven legal services by our Czech legal teams deployed in **Prague, Brno, Ostrava, Hradec Králové, Pilsen** and **České Budějovice**, and a full service Slovak legal team located in **Bratislava** and **Košice**.

Helping clients to streamline their legal needs, it is only natural that we offer “one-stop-shop” legal services, with the Deloitte Legal Prague office being the gateway to both countries.

A combined force of more than 120 Czech and Slovak legal professionals makes us the advisers of choice to some of the **leading multinational and regional corporations doing business in the Czech Republic and Slovakia.**



CEE/SEE Presence

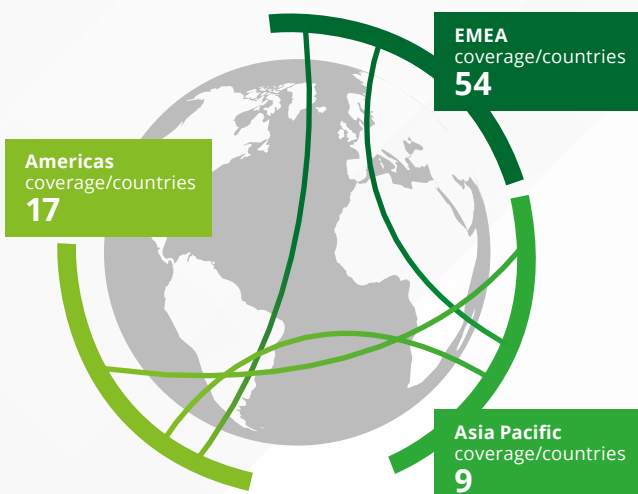
Deloitte Legal Central Europe is an integral part of the global Deloitte Legal network, with over 2500 legal professionals in over 75 jurisdictions operating in 25 offices. Deloitte Legal addresses your challenges with comprehensive thinking, powered by experience and insights drawn from diverse business disciplines, industries, and global perspectives. **We bring together legal advice, strategy,**

and technology to develop innovative solutions, create value for you and your business, and transform the way in which legal services are delivered and consumed.

“*The firm has a pro-client approach and valuable knowledge and is communicatively and professionally proficient.*”

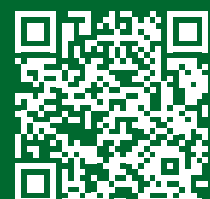
Chambers Europe 2021

Global Presence



We can be enormously challenging to manage numerous legal services providers around the world and issues can slip into the cracks. As one of the global leaders in legal services, Deloitte Legal works with our clients to understand their needs and their vision, and to coordinate delivery around the world to help our clients achieve their business goals.

For more information on our global reach and operations, please visit our website.



Contacts



Martin Bohuslav
Managing Partner
Attorney at Law

mbohuslav@deloittece.com

+420 724 583 971



Hana Gawlasová
Partner | Attorney at Law

Data Privacy/ IP

ICT/TMT/ Competition Law

hgawlasova@deloittece.com

+420 246 042 500



Ludvík Juříčka
Partner | Attorney at Law

Corporate Law / Commercial

Law / Private Clients

ljuricka@deloittece.com

+420 602 795 998



Jaroslava Kračúnová
Partner | Attorney at Law

Business Integrity

/ Environmental Law

jkracunova@deloittece.com

+420 724 705 824



Jiřina Procházková
Partner | Attorney at Law

Tax Litigation

/ Public Regulation

jprochazkova@deloittece.com

+420 777 293 481



Jan Procházka
Partner | Attorney at Law

Banking & Finance

/ Employment law & Benefits

jprochazka@deloittece.com

+420 731 530 603



Petr Suchý
Partner | Attorney at Law

Mergers & Acquisitions

/ Restructuring, Bankruptcy

and Insolvency / Real Estate

psuchy@deloittece.com

+420 605 228 316



Daniel Vitouš
Partner | Attorney at Law

M&A / Corporate Law

dvitous@deloittece.com

+420 733 593 673



Dagmar Yoder
Partner

Bratislava

dyoder@deloittece.com

+421 905 253 844

Deloitte. Legal

"Deloitte" is the brand under which tens of thousands of dedicated professionals in independent firms throughout the world collaborate to provide audit, consulting, legal, financial advisory, risk management, tax and related services to select clients. These firms are members of Deloitte Touche Tohmatsu Limited, a UK private company limited by guarantee („DTTL“). Each DTTL member firm provides services in particular geographic areas and is subject to the laws and professional regulations of the particular country or countries in which it operates. Each DTTL member firm is structured in accordance with national laws, regulations, customary practice, and other factors, and may secure the provision of professional services in its territory through subsidiaries, affiliates, and other related entities. Not every DTTL member firm provides all services, and certain services may not be available to attest clients under the rules and regulations of public accounting. DTTL and each DTTL member firm are legally separate and independent entities, which cannot obligate each other. DTTL and each DTTL member firm are liable only for their own acts and omissions, and not those of each other. DTTL (also referred to as „Deloitte Global“) does not provide services to clients.

Deloitte is a leading global provider of audit and assurance, consulting, financial advisory, risk advisory, tax and related services. Our global network of member firms and related entities in more than 150 countries and territories

(collectively, the „Deloitte organization“) serves four out of five Fortune Global 500® companies. Learn how Deloitte's approximately 312,000 people make an impact that matters at www.deloitte.com.

This communication contains general information only, and none of Deloitte Touche Tohmatsu Limited („DTTL“), its global network of member firms or their related entities (collectively, the “Deloitte organization“) is, by means of this communication, rendering professional advice or services. Before making any decision or taking any action that may affect your finances or your business, you should consult a qualified professional adviser.

No representations, warranties or undertakings (express or implied) are given as to the accuracy or completeness of the information in this communication, and none of DTTL, its member firms, related entities, employees or agents shall be liable or responsible for any loss or damage whatsoever arising directly or indirectly in connection with any person relying on this communication. DTTL and each of its member firms, and their related entities, are legally separate and independent entities.

© 2024 For more information contact Deloitte Czech Republic.