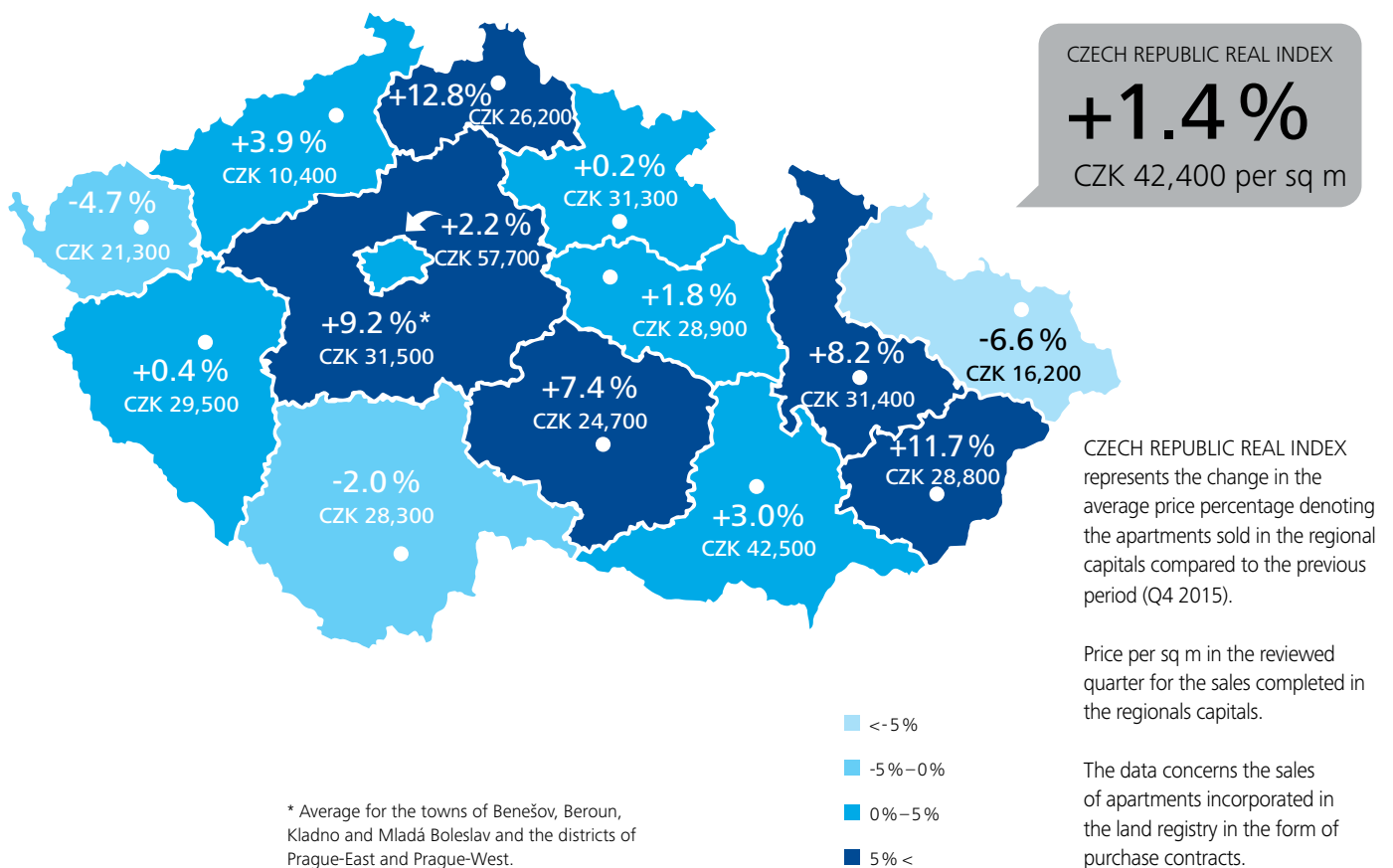
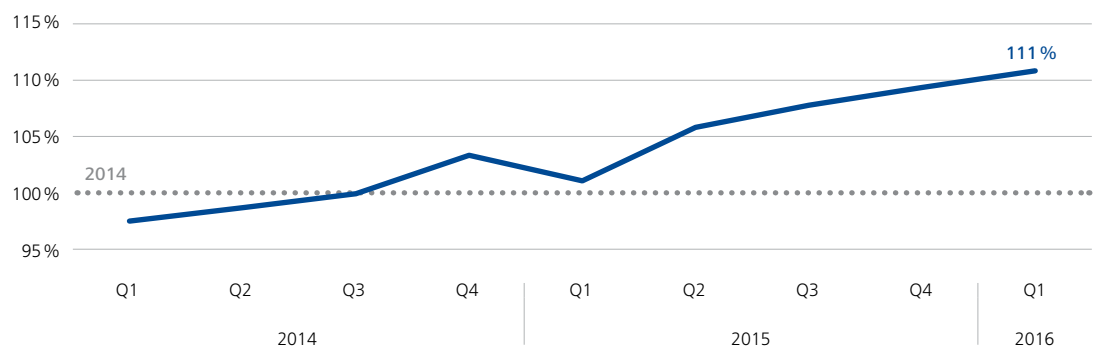


## Deloitte real index Actual prices of apartments sold in the CR

Q1 2016



### Development of the actual apartment sales prices index in Prague and regional capitals



— Realised sales price.    ..... Average realised sales price for the whole of 2014 = 100 %

All the prices include VAT.

**Average price, aggregate transaction volume and the number of sales in the reviewed period Q1 2016 per segment in Prague and regional capitals**



Development projects  
**CZK 54,300 per sq m**  
 CZK 6.0 billion  
 1,603 sales (of which  
 1,068 first sales)

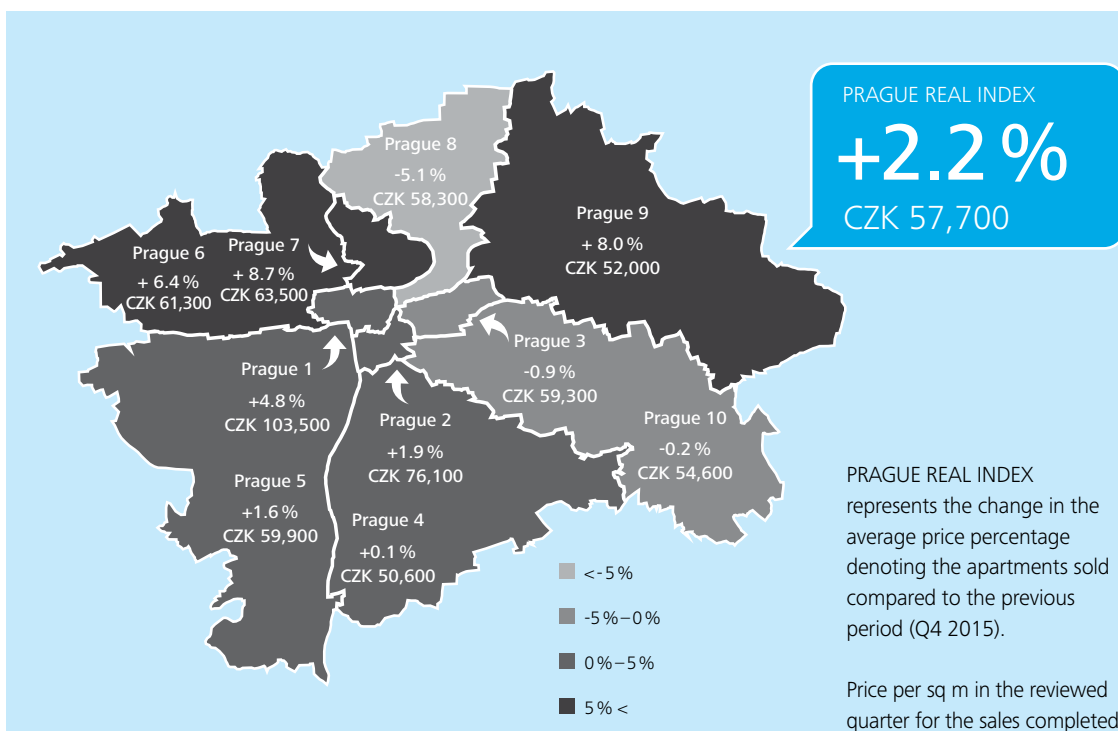
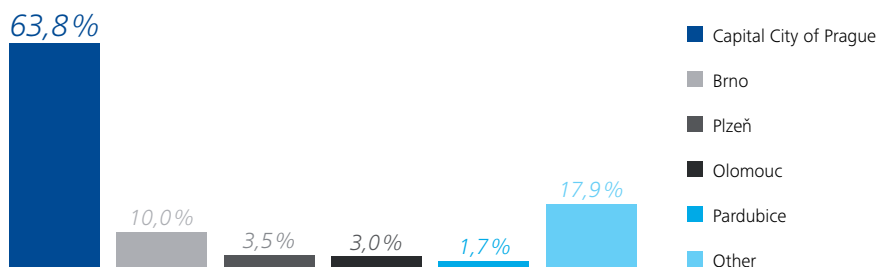


Brick houses  
**CZK 42,600 per sq m**  
 CZK 4.7 billion  
 1,695 sales



Prefab. apartment buildings  
**CZK 32,800 per sq m**  
 CZK 4.0 billion  
 2,156 sales

**Structure of the apartment sales volume in Q1 2016**



**Average price, aggregate transaction volume and the number of sales in the reviewed period Q1 2016 per segment in Prague**



Development projects  
**CZK 62,900 per sq m**  
 CZK 4.6 billion  
 1,018 sales (of which  
 635 first sales)



Brick houses  
**CZK 60,000 per sq m**  
 CZK 3.0 billion  
 762 sales



Prefab. apartment buildings  
**CZK 47,200 per sq m**  
 CZK 1.9 billion  
 700 sales

The data concerns the sales of apartments incorporated in the land registry in the form of purchase contracts.

Deloitte refers to one or more of Deloitte Touche Tohmatsu Limited, a UK private company limited by guarantee ("DTTL"), its network of member firms, and their related entities. DTTL and each of its member firms are legally separate and independent entities. DTTL (also referred to as "Deloitte Global") does not provide services to clients. Please see [www.deloitte.com/cz/about](http://www.deloitte.com/cz/about) for a more detailed description of DTTL and its member firms.