



## ASSET OVERVIEW

B-Class office building on the street Konevova in Prague 3 – Žižkov

Combination of retail space and representative office space

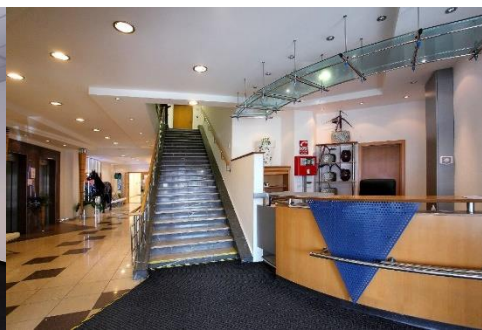
GLA 9,000 sq m

Location with good accessibility and public facilities

Tram station right in front of the building

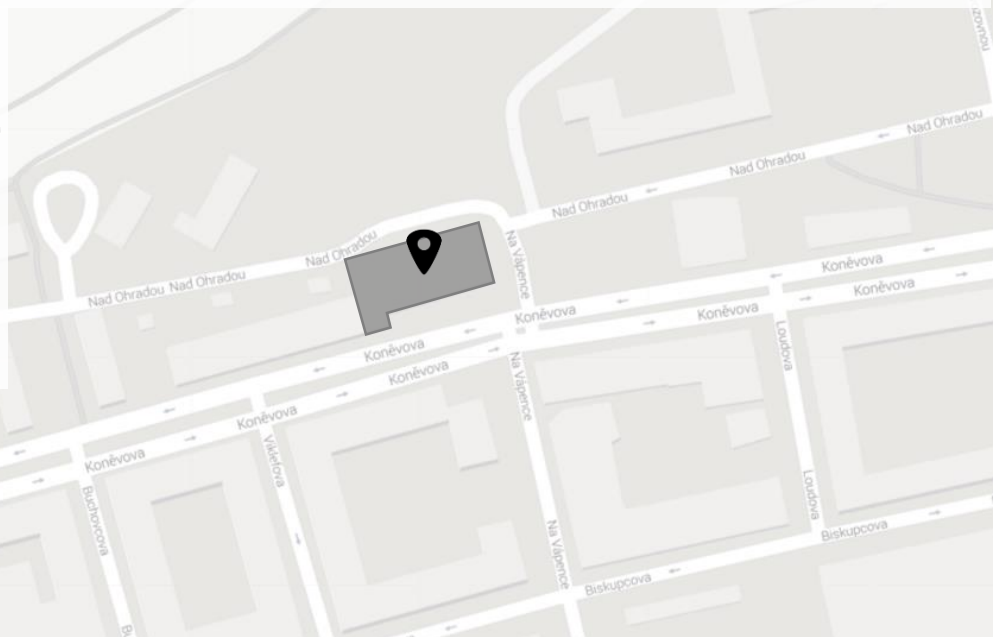
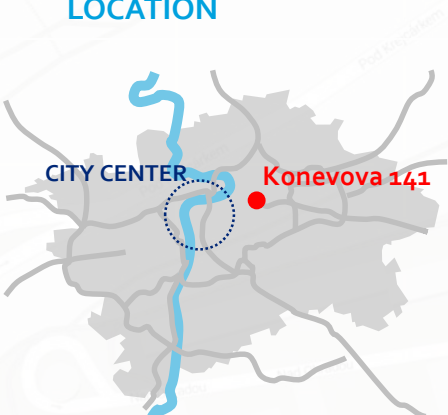
Underground parking

Upper floors with panoramic view on Prague





## LOCATION



## SPECIFICATION

10 above ground floors, 1 underground floor

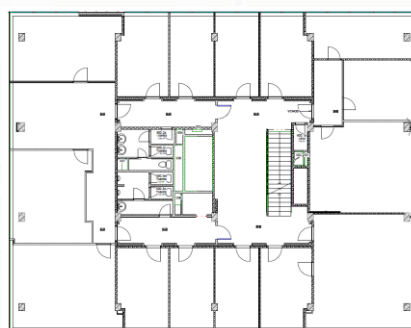
NLA 6,380 sq m

GLA 9,000 sq m

Current occupancy 93 %

Strong tenant mix

## TYPICAL FLOOR



## TRANSACTION PROCESS

**Miroslav Linhart**

[mlihart@deloittece.com](mailto:mlihart@deloittece.com)

+420 737 235 553

**Ondřej Zabloužil**

[ozablouzil@deloittece.com](mailto:ozablouzil@deloittece.com)

+420 723 582 619

- Deloitte is engaged as an advisor to the Owners
- Parties interested in participating in the potential transaction process are requested to express their interest in writing to Deloitte
- Interested parties will be provided with a full information memorandum after signing a NDA
- We kindly ask you to keep the provided information strictly private and confidential

Deloitte prepared this document with due care from publicly available information; however, Deloitte does not accept any liability for the content of or interpretation of information contained in this document. Deloitte makes no representation or any other form of assurance with respect to accuracy and completeness of this document. Deloitte is not obligated to update, adjust or complete this document or notify its readers of any changes in the facts described herein or in any statements, outlooks or estimates contained herein or of any facts that cease to be correct. Potential investors must rely on their own inspections, financial plans and conclusions. This document does not represent a proposal for sale or an investment advice and its sole purpose is to provide information. This document and its content are confidential and may not be reproduced, distributed or passed, directly or indirectly, to any other party as a whole or in parts without the prior written approval of Deloitte.