



ASSET OVERVIEW

2 separated B-Class office buildings

Mix of office, commercial and residential area

Steady rental income

Location within developing part of Prague 3 with good accessibility

GLA 9,452 sq m (Olšanská 3) and 9,903 sq m (Olšanská 5)

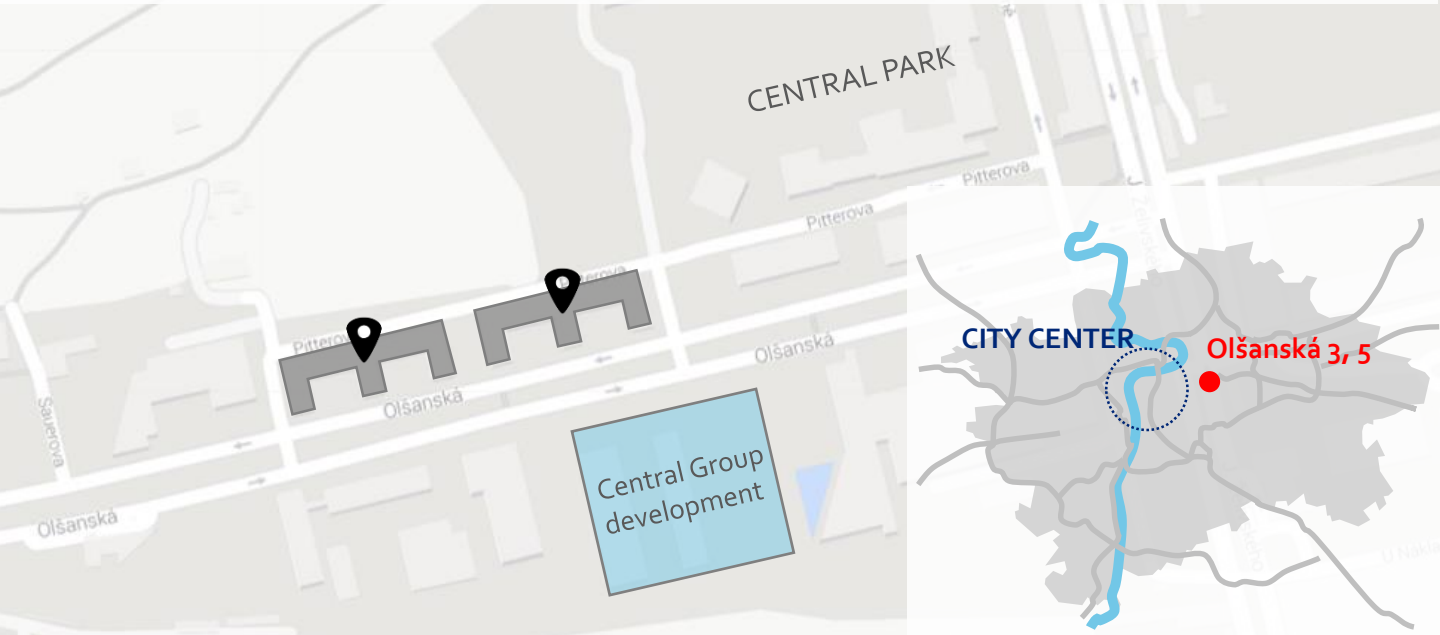
Parking

Zoning plan enables residential redevelopment





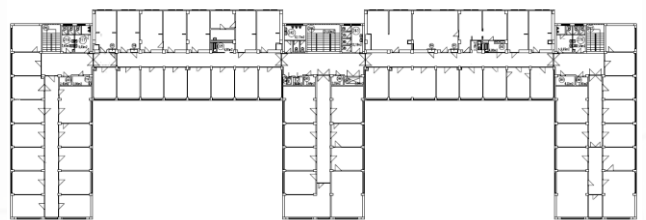
LOCATION



SPECIFICATION

- 5 above ground floors, 1 underground floor
- NLA 6,692 sq m (O3) and 7,203 sq m (O5)
- Total GFA 20,411 sq m
- Typical floor 1,670 sq m
- Current occupancy 93% (O3) and 79% (O5)

TYPICAL FLOOR



TRANSACTION PROCESS

Miroslav Linhart

mliinhart@deloittece.com

+420 737 235 553

Ondřej Zabloudil

ozabloudil@deloittece.com

+420 723 582 619

- Deloitte is engaged as an advisor to the Owners
- Parties interested in participating in the potential transaction process are requested to express their interest in writing to Deloitte
- Interested parties will be provided with a full information memorandum after signing a NDA
- We kindly ask you to keep the provided information strictly private and confidential

Deloitte prepared this document with due care from publicly available information; however, Deloitte does not accept any liability for the content of or interpretation of information contained in this document. Deloitte makes no representation or any other form of assurance with respect to accuracy and completeness of this document. Deloitte is not obligated to update, adjust or complete this document or notify its readers of any changes in the facts described herein or in any statements, outlooks or estimates contained herein or of any facts that cease to be correct. Potential investors must rely on their own inspections, financial plans and conclusions. This document does not represent a proposal for sale or an investment advice and its sole purpose is to provide information. This document and its content are confidential and may not be reproduced, distributed or passed, directly or indirectly, to any other party as a whole or in parts without the prior written approval of Deloitte.