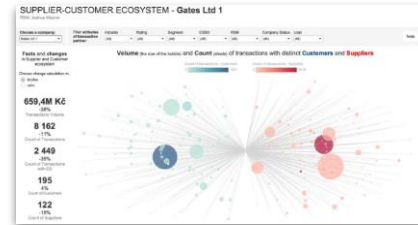
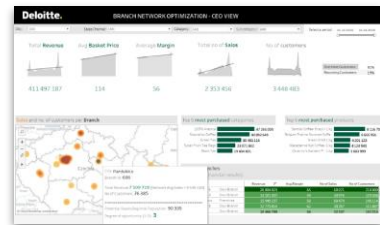


Automated Reporting

Automated reporting is about bringing users **data-driven insights in a timely way**, without the users having to seek out the information for themselves.

REPORTING

- On-premises or in Cloud (or mixed) according to the clients' requirements and data infrastructure.
- Data-driven insights and faster decision-making process thanks to nearly real-time data available in the reports.



DASHBOARDS, VISUALIZATIONS

- Monitoring tools with real-time data tracking
- Data-driven insights in a form of various dashboards to support Data Monetization
- Visualizations of various data in the maps to get location insights



PREPARATION

VISION

PROTOTYPE

IMPLEMENTATION

Let's take a closer look at our **approach in 4 steps:**

- 1 We organize a set of workshops to collect and validate all business requirements.**
- 2 Based on requirements, we prepare sketches design and map requirements to data.**
- 3 We can start with prototyping in Power BI and testing.**
- 4 Finally, we implement the solution, prepare a documentation or manuals, and organize trainings.**

Possible use cases

- 🔍 **Data-driven Finance** – transform your finance controlling to automated version;
- 🔍 **Control mechanism** – AI/data-based models for fleet management optimization, branch and ATMs network etc.;
- 🔍 **Location Intelligence** – use your spatial data together with business data to e. g. establish a new branch, target new customers, etc.;
- 🔍 **Customer-centric approach** – interactive reporting built on your CRM/ERP systems to see insights about customers, product sales and so on.

TOOLS & COMPATIBILITY

Connectivity

DWH/DB

CLOUD

Apps

BI tools



KEY BENEFITS

- **The „best“ BI solution (tool) recommendation** for your dashboards / reports
- **Data-driven insights as a part of Data Monetization process together with decision making pulled by data**
- **(Near) real-time insights or data load schedule tailored by clients needs**
- **Various options of compatibility** – multi-cloud, DWH, Apps API connections etc.
- Automation of (some parts) of client's job

MAIN CONTACT



Aneta Trepakova
 BI Lead, AI & Data
 Tel: +420 728 211 215
 Email: atrepakova@deloitteCE.com