

Your Spotlight Workshop

Date & Time

Your choice

Location

Your German office or Deloitte offices in Düsseldorf and Frankfurt, Deloitte Greenhouse in Berlin (locations upon request, depending on availability) as well as virtual/telephone or video meetings.

Language

English, German or Japanese



For more information and to request your Spotlight Workshop please do not hesitate to contact us.



Contacts

Thomas Welz

Partner | Business Tax
Phone: +49 (0)211 8772 3522
twelz@deloitte.de

Iris-Sabine Moennich

Director | Business Tax
Phone: +49 (0)211 8772 3572
imoennich@deloitte.de

Shinichi Ishida

Japanese Coordinator | Tax
Phone: +49 (0)211 8772 2009
sishida@deloitte.de

Andres Pelaez

Director | Transfer Pricing
Phone: +49 (0)211 8772 4165
apelaez@deloitte.de

Mai Ishida

Manager | Transfer Pricing
Phone: +49 (0)151 18294803
maishida@deloitte.de

Andreas Jentgens

Partner | Deloitte Legal
Phone: +49 (0)69 7191 88411
ajentgens@deloitte.de

Klaus Gresbrand

Counsel | Deloitte Legal
Phone: +49 (0)211 8772 2501
kgresbrand@deloitte.de

Deloitte.

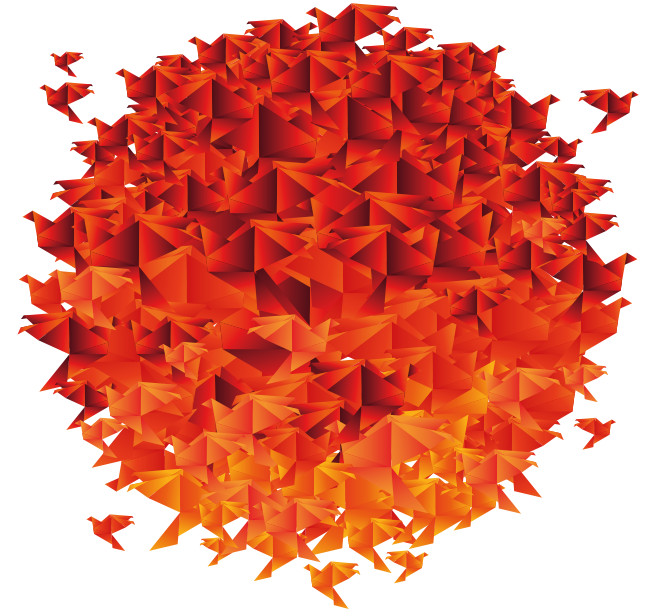
This communication contains general information only not suitable for addressing the particular circumstances of any individual case and is not intended to be used as a basis for commercial decisions or decisions of any other kind. None of Deloitte GmbH Wirtschaftsprüfungsgesellschaft or Deloitte Touche Tohmatsu Limited, its member firms, or their related entities (collectively, the "Deloitte network") is, by means of this communication, rendering professional advice or services. No entity in the Deloitte network shall be responsible for any loss whatsoever sustained by any person who relies on this communication.

Deloitte refers to one or more of Deloitte Touche Tohmatsu Limited, a UK private company limited by guarantee ("DTTL"), its network of member firms, and their related entities. DTTL and each of its member firms are legally separate and independent entities. DTTL (also referred to as "Deloitte Global") does not provide services to clients. Please see www.deloitte.com/de/UeberUns for a more detailed description of DTTL and its member firms.

Deloitte provides audit, risk advisory, tax, financial advisory and consulting services to public and private clients spanning multiple industries; legal advisory services in Germany are provided by Deloitte Legal. With a globally connected network of member firms in more than 150 countries, Deloitte brings world-class capabilities and high-quality service to clients, delivering the insights they need to address their most complex business challenges. Deloitte's approximately 312,000 professionals are committed to making an impact that matters.

Issue 12/2020

Deloitte.



Japanese Services Group
Spotlight Workshop Program
Tax & Legal



Master challenges by knowledge

In a constantly changing economic environment and especially during an economic downturn such as the COVID-19 crisis, we strive to support you in dealing with and mastering challenges.

As one of our Japanese Services Group initiatives, we are offering you interactive sessions in English, German or Japanese language in the form of a workshop that will allow flexible and effective interaction between you and Deloitte. These workshops will be tailored to suit your individual wishes and needs.

We hope that our Spotlight Workshops will serve as an excellent opportunity to discuss issues you and your company are facing with our experts from Deloitte's German offices. Please do not hesitate to contact in case of any questions and to discuss your custom Spotlight Workshop Program.

Yours sincerely,
Japanese Services Group – Tax & Legal

Our Spotlight Workshop Offerings

With our Spotlight Workshop Offerings we bring to you selected tax and legal topics relevant for your business.

Whether you would like to provide your team with knowledge for business in Germany or dive into specific and innovative topics – we can provide you with valuable information and an intense learning experience on the following topics and take a 360° view.

Tax topics



Introduction to DAC6

Overview on the European Mandatory Disclosure Regime, its local implementation and key aspects to be aware of.



Transfer pricing developments in Europe

Highlighting recent developments in the European transfer pricing landscape, including managing unexpected financial results during an economic downturn and how to better prepare an audit ready transfer pricing documentation.



Business Model Optimization

Outlining key aspects from a tax, transfer perspective in view of Business Model Optimization and Legal entity restructurings during economic downturn.



Trends in German tax audit

Latest insights on areas discussed in German tax audits from a tax and transfer pricing perspective.



Introduction to German tax law

Overview on German corporate tax matters incl. spotlights on tax aspects relevant for Japanese multinationals, including recent tax law changes.



Tax Due Diligence matters

Highlighting tax key issues when conducting Tax Due Diligences.

Legal topics



German Contract Law 101

Basics of commercial contract design in Germany incl. risk-prone areas of data protection and consumer protection under German law.



Contract Automation

Live-demonstration of the capabilities of modern contract automation software and showcase cost-saving potential.



General Employment Law Issues

Focus on legal risks and issues of German employment law from the employers' perspective.



Rights and Obligations of Managing Directors of a GmbH

Explore the duties of a managing director of a German limited liability company, with concrete examples and ways to manage and minimize personal liability risks.



Data Protection

The violation of applicable data might cause huge fines to be imposed on companies. We provide an overview on the EU-General Data Protection Regulation, its local implementation and the adequacy decision in relation to Japan.



Legal Due Diligence matters

Highlighting legal key issues when conducting Legal Due Diligences as well as an outlook on the future of the Legal Due Diligence.