



# ESG Data Management and Analytics

Using data analytics to generate valuable insights into your ESG performance

8 April 2021

*Grab'n  
Go*

# YOUR HOSTS TODAY



**Anne Kathrine Wennergren Holm**  
Partner  
Responsible Innovation & Tech | Digital Ethics



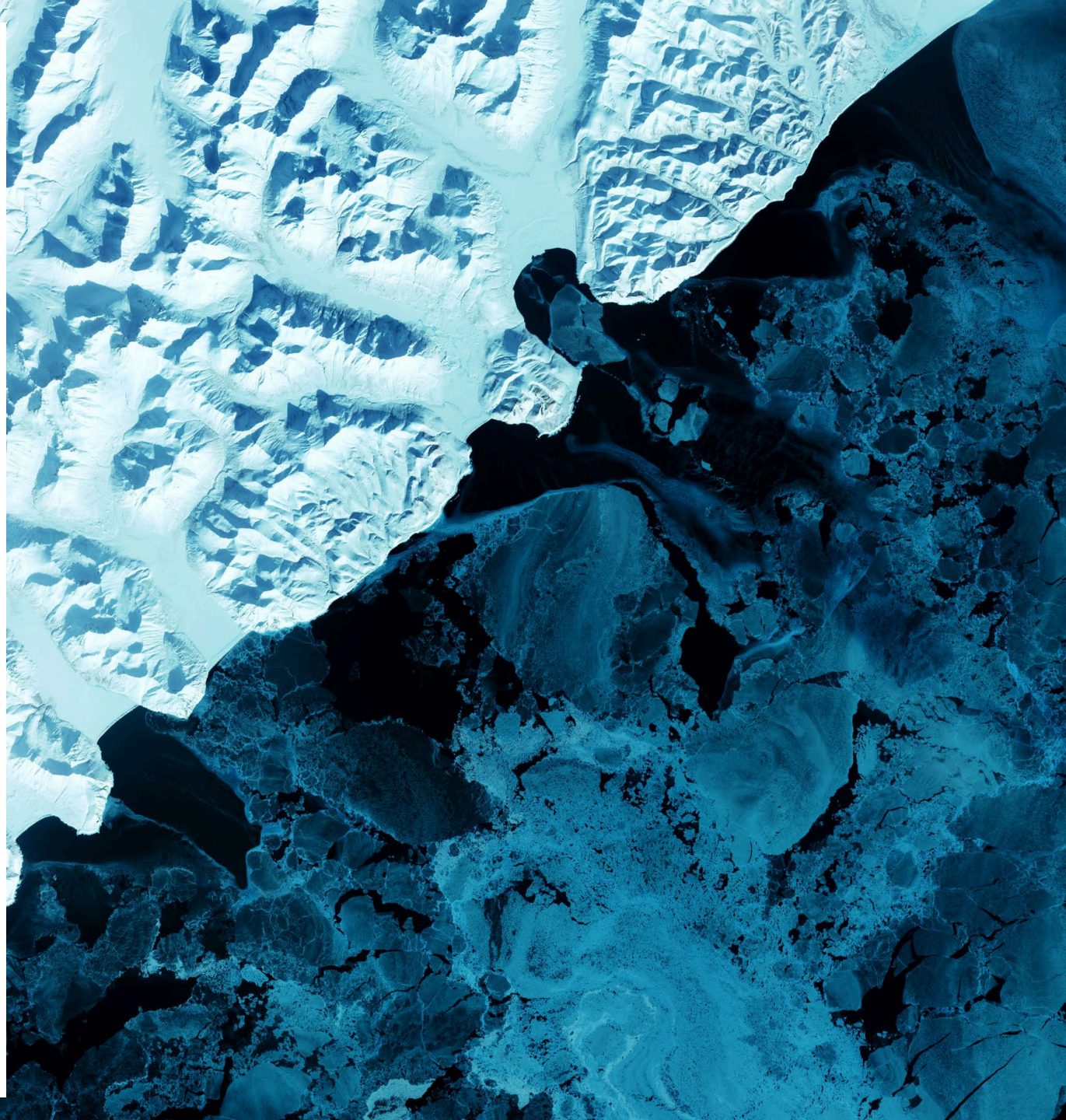
**Helena Barton**  
Partner  
Sustainability | ESG | Climate Risk




**Carsten Brøns Andersen**  
Senior Manager  
Responsible Innovation & Tech | Digital Ethics

# AGENDA



1. What is ESG data and why are we talking about it?
2. What is the foundation for mastering ESG data?
3. How can we use ESG data and AI/ML to achieve greater insights and make better decisions?



An aerial, high-angle photograph of a large, open public square or plaza. The ground is paved with large, light-colored rectangular tiles. Numerous people are walking in various directions across the square. The individuals are dressed in a variety of casual and business-casual attire, including jackets, sweaters, and blazers. Some people are carrying bags or briefcases. The overall scene depicts a busy, active public space. A white rectangular box is overlaid on the lower-left portion of the image, containing text.

What is ESG data and why are we talking about it?

# ESG DATA TAKE MULTIPLE FORMS AND RESIDE ACROSS MULTIPLE CORPORATE AND PARTNER SYSTEMS

	EXAMPLES OF ENVIRONMENTAL SOCIAL GOVERNANCE TOPICS 	EXAMPLES OF TYPES OF DATA 
<b>E</b>	Energy consumption Carbon emissions Water consumption Waste management	Consumption data Safety data Emissions data Survey data
<b>S</b>	Working conditions, health & safety Human rights and labour rights Diversity and inclusion Privacy and data security	*** Status reports (unstructured) RSS feeds (unstructured)
<b>G</b>	Accountability and oversight Ethical conduct Executive remuneration	*** Measured Calculated Estimated

# FOCUS ON ACCESSIBILITY, AVAILABILITY AND TRANSPARENCY OF ESG DATA IS ACCELERATING

## REGULATORS, INDUSTRY BODIES, AND STANDARD-SETTERS

### REGULATORS, INDUSTRY BODIES



### FRAMEWORKS AND STANDARDS



## INVESTORS, CUSTOMERS & OTHER STAKEHOLDERS

### DATA AND INDEX PROVIDERS



... 100+

### Key Questions:

- Data Availability – *How do we get complete, reliable data?*
- Data Management – *How do we operationalize and work with the data?*
- Data Transparency – *How do we report our data? What does it tell us?*



What is the foundation for  
mastering ESG data?

# MANY COMPANIES ARE GRADUALLY IMPROVING THE QUALITY OF ESG DATA MANAGEMENT FOR BETTER DECISION-MAKING

Data quality and maturity



## FOUNDATIONAL

- Existing data usage (emails, production units, F&A, HR, HSE systems)
- Spreadsheets (and post-its)
- Manual data management
- High-level partner input (e.g. from reports)



## ADVANCED

- Standard ESG reporting tools
- BI/Analytics dashboards
- Detailed supply chain reporting
- Sourced third party data
- Investing in "for-purpose" solutions (often AI-powered)



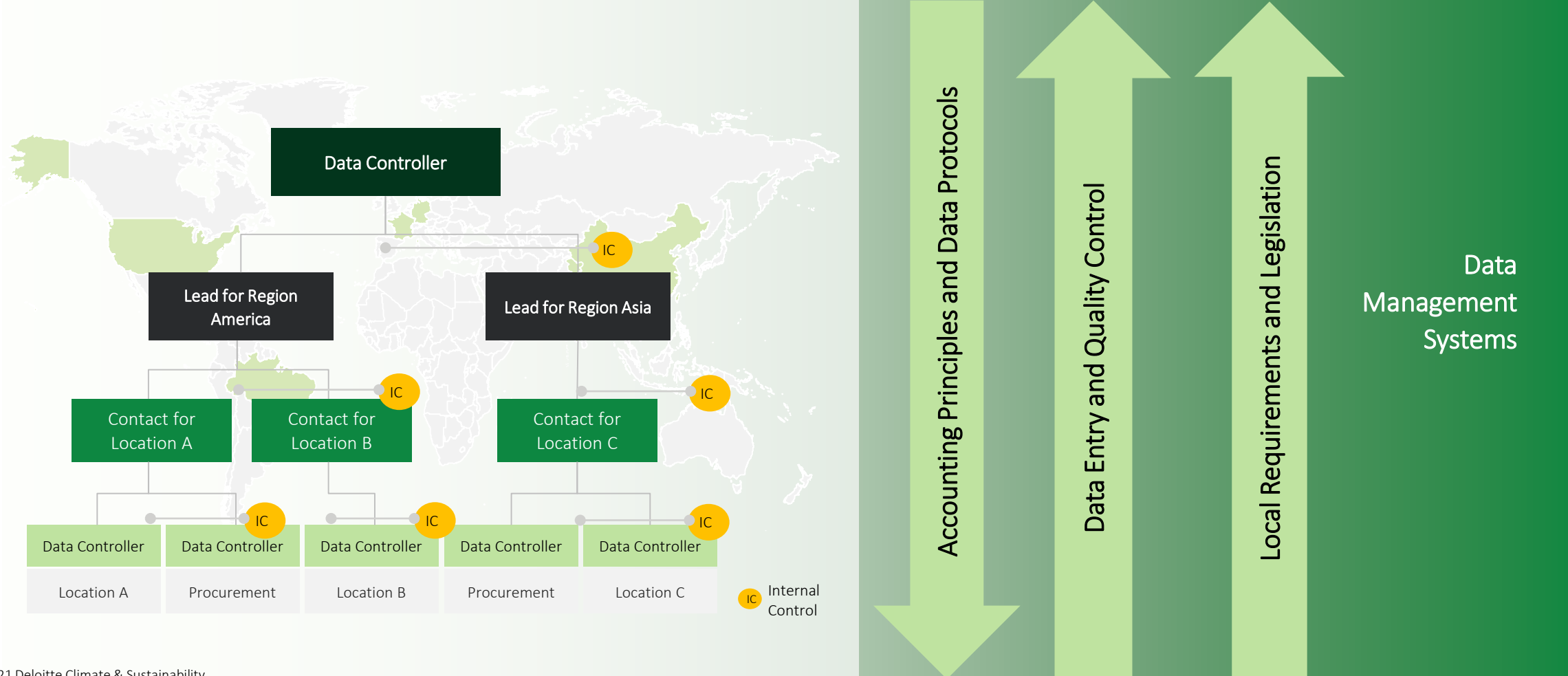
## LEADING

- Boardroom using ESG data-driven insights
- Advanced ESG forecasting and predictions at the heart of strategic decision-making
- Exploration and investment in solution-building and data acquisition
- ESG data of sufficient quality to be tied to compensation and bonus schemes
- Ecosystem collaboration around new technologies, business models and partnerships

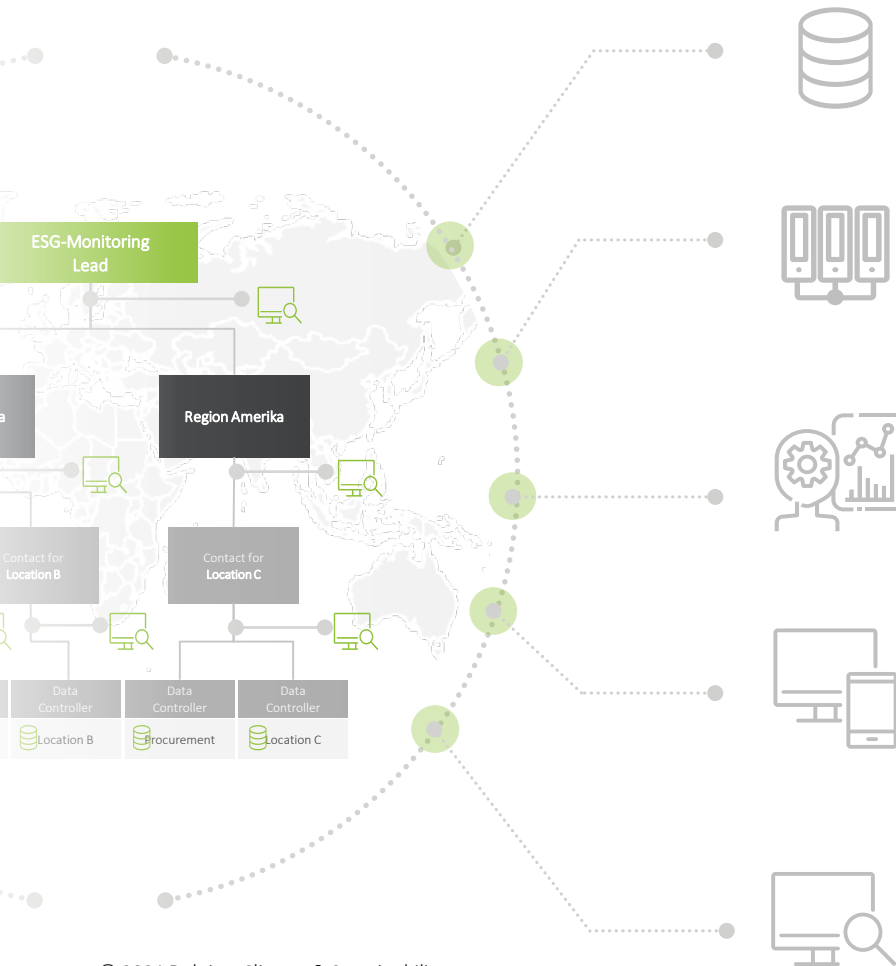
ESG data is evolving from static and backward-looking to dynamic and forward-looking, harnessing the digital revolution.



# STRONG GOVERNANCE IS NEEDED TO BUILD THE CONTROL ENVIRONMENT FOR ESG DATA TO THE LEVEL OF FINANCIAL DATA



# GETTING ESG DATA RIGHT REQUIRES A STRONG FOUNDATION AND SYSTEMIC APPROACH ACROSS IT, PROCESSES AND CONTROL



## Definition of Metrics and Data Transparency

- ✓ Metric definitions, standard protocols and measurements
- ✓ Compliance with relevant external standards
- ✓ Alignment of assumptions, projections, measurements and the use of conversion factors in calculations
- ✓ Protocol for avoiding aggregations- and conversion errors (US ton vs. metric ton)

## Scope of Consolidation and Reporting Scope

- ✓ Consistent scope of consolidation and reporting period with key financial figures
- ✓ Specification of 'consolidation groups', e.g. ensuring alignment on which locations are relevant for collection of environmental indicators

## Roles and Responsibilities

- ✓ Clear allocation and definition of ownership and responsibilities as well as adequate competencies
- ✓ Formal procedures to ensure sufficient knowledge-sharing

## Processes and IT

- ✓ Formal reporting processes
- ✓ Corporate reporting requirements and alignment of processes at each relevant location
- ✓ Definitions and descriptions of relevant data
- ✓ Use of IT-systems
- ✓ Clear and robust interfaces between manual and automated processes

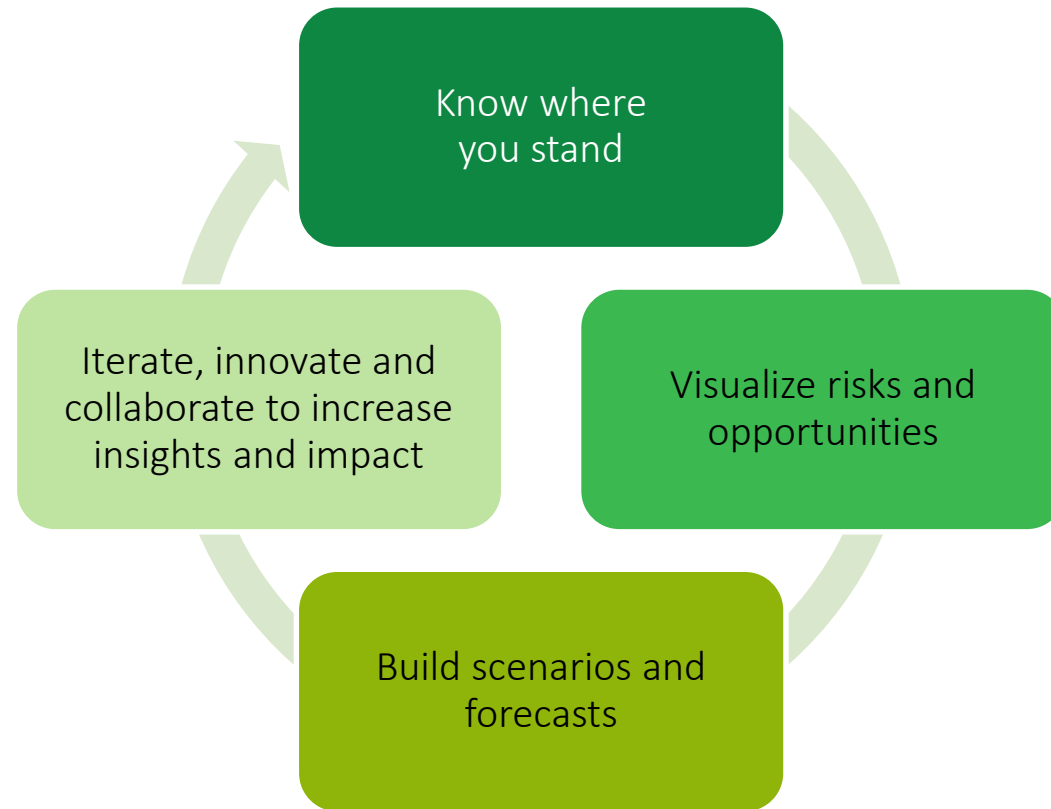
## Internal Control Systems

- ✓ Formal and operational control systems for non-financial key metrics
- ✓ Design – Controls are designed to address the risk of false statements
- ✓ Implementation – Ensuring that the controls are correctly implemented
- ✓ Operating Effectiveness – Ensuring that the controls are working optimally

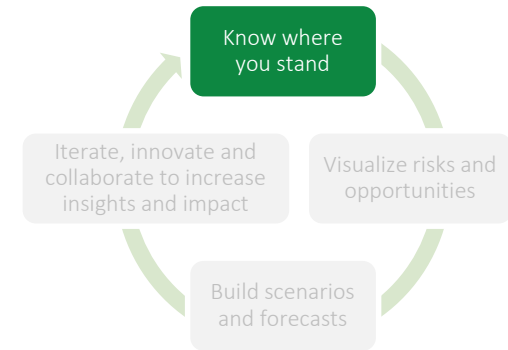
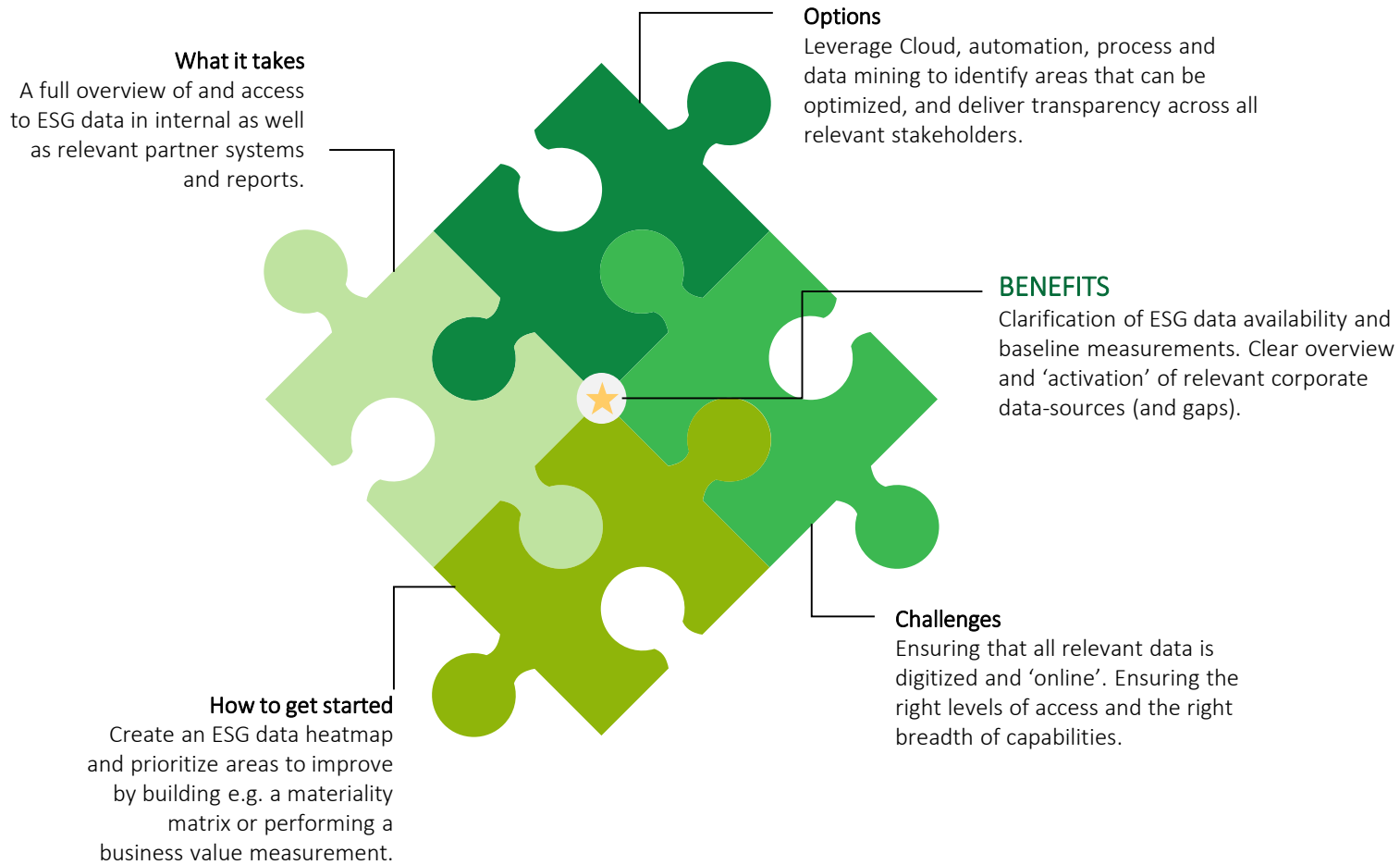


How can we use ESG data and AI/ML to achieve greater insights and make better decisions?

# DATA-DRIVEN INSIGHTS REQUIRE VIGILANCE AND ALIGNMENT – AND THE INVOLVEMENT OF YOUR ENTIRE ECOSYSTEM



# COLLECT, COLLATE, AGGREGATE AND ANALYZE ALL RELEVANT ESG DATA TO DELIVER RELIABLE MEASUREMENT



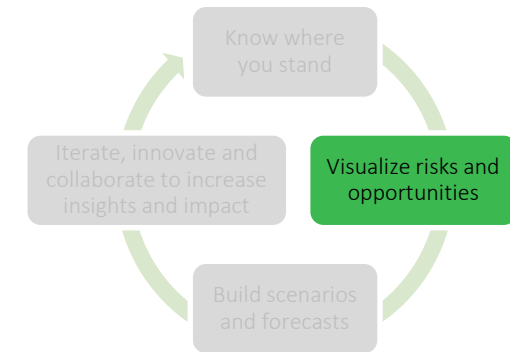
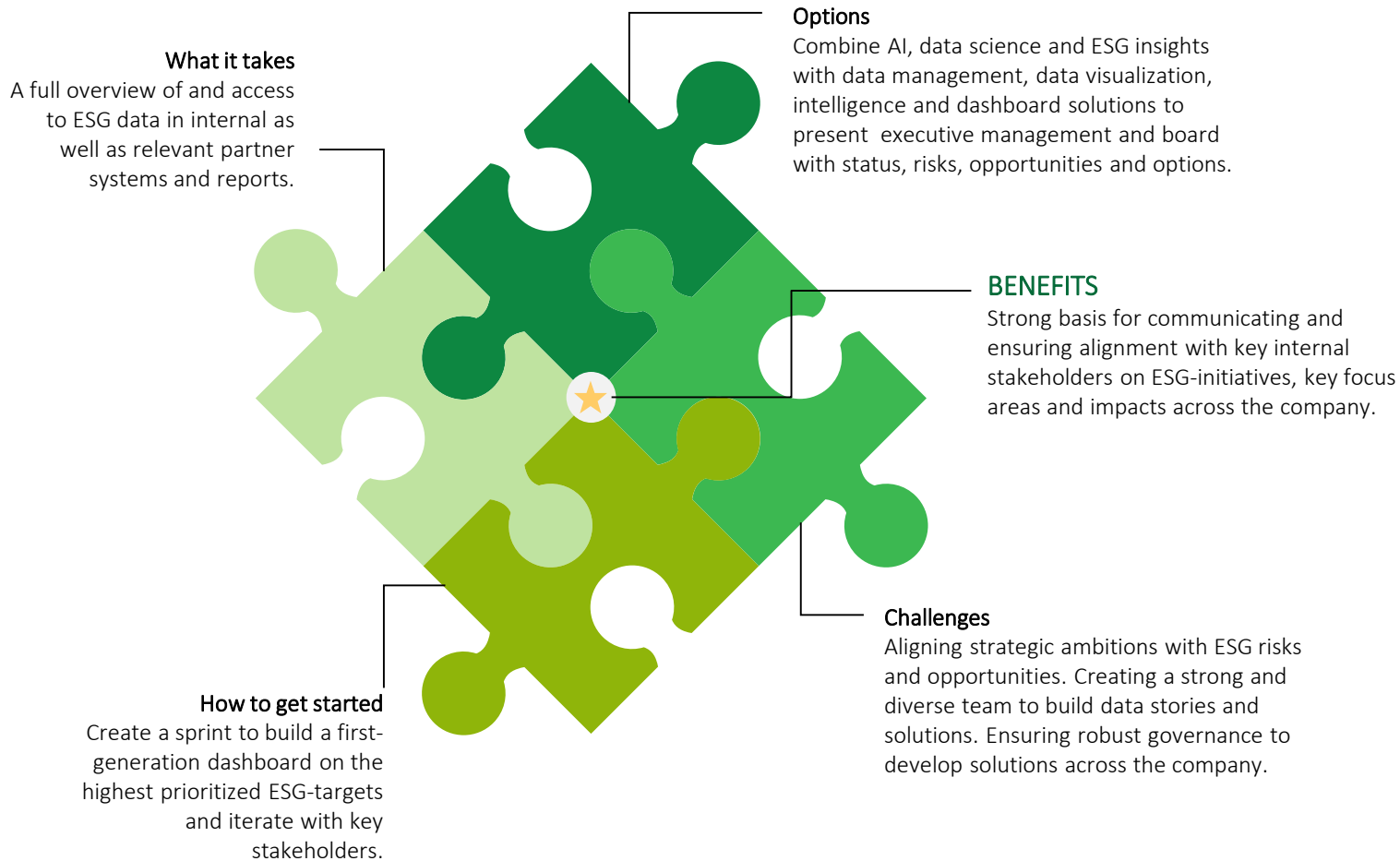
Example – Insights for CFOs

## Data Management Platforms



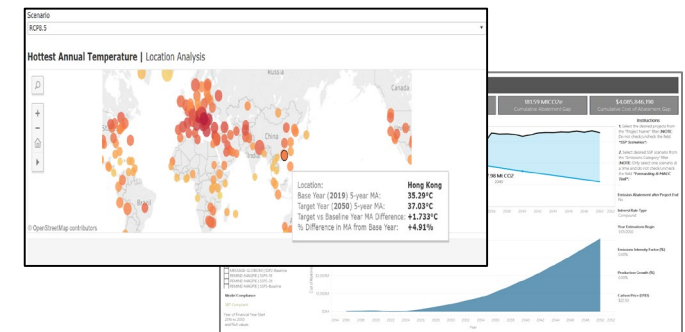
Standardize, collect and aggregate ESG data in 1 cloud platform with full audit trail

# ENSURE MANAGEMENT ALIGNMENT AND BASE DECISIONS ON INSIGHT INTO MOST MATERIAL RISKS AND OPPORTUNITIES



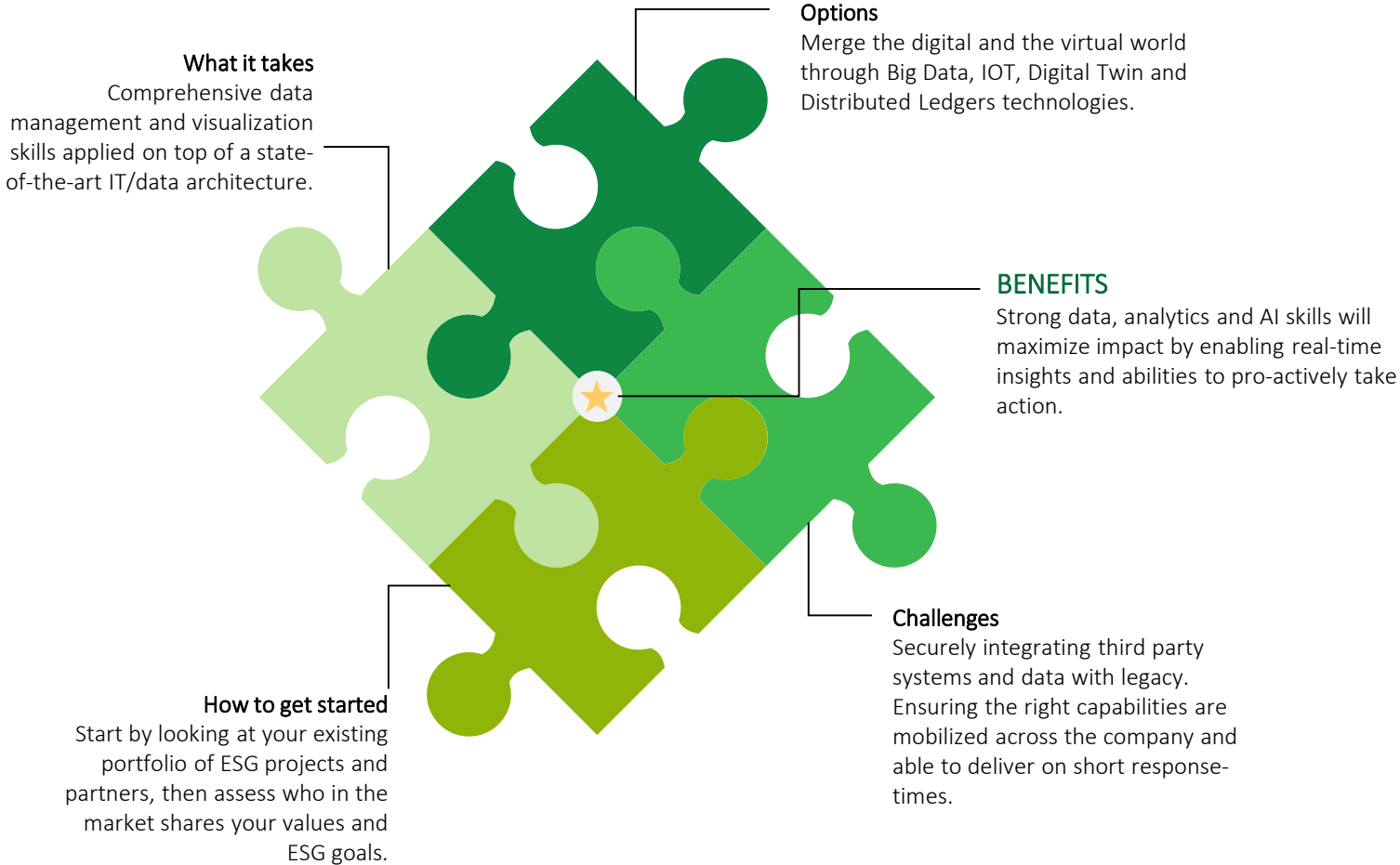
Example – Insights for CEOs

**Deloitte.**



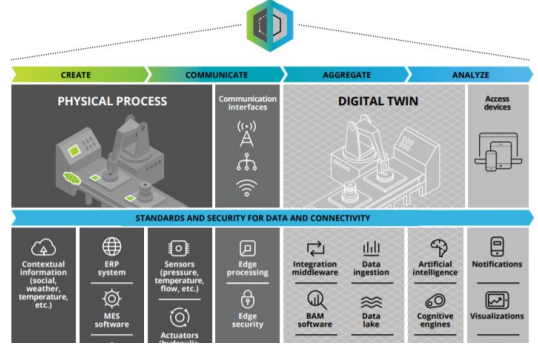
Global physical climate risk analysis  
Investment Portfolio risks and exposures

# COMBINE DATA AND DIGITAL TECH TO FORECAST AND PREDICT THE MOST IMPACTFUL ACTIVITIES AND INVESTMENTS



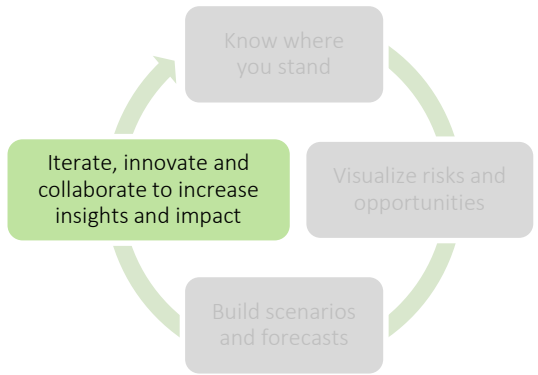
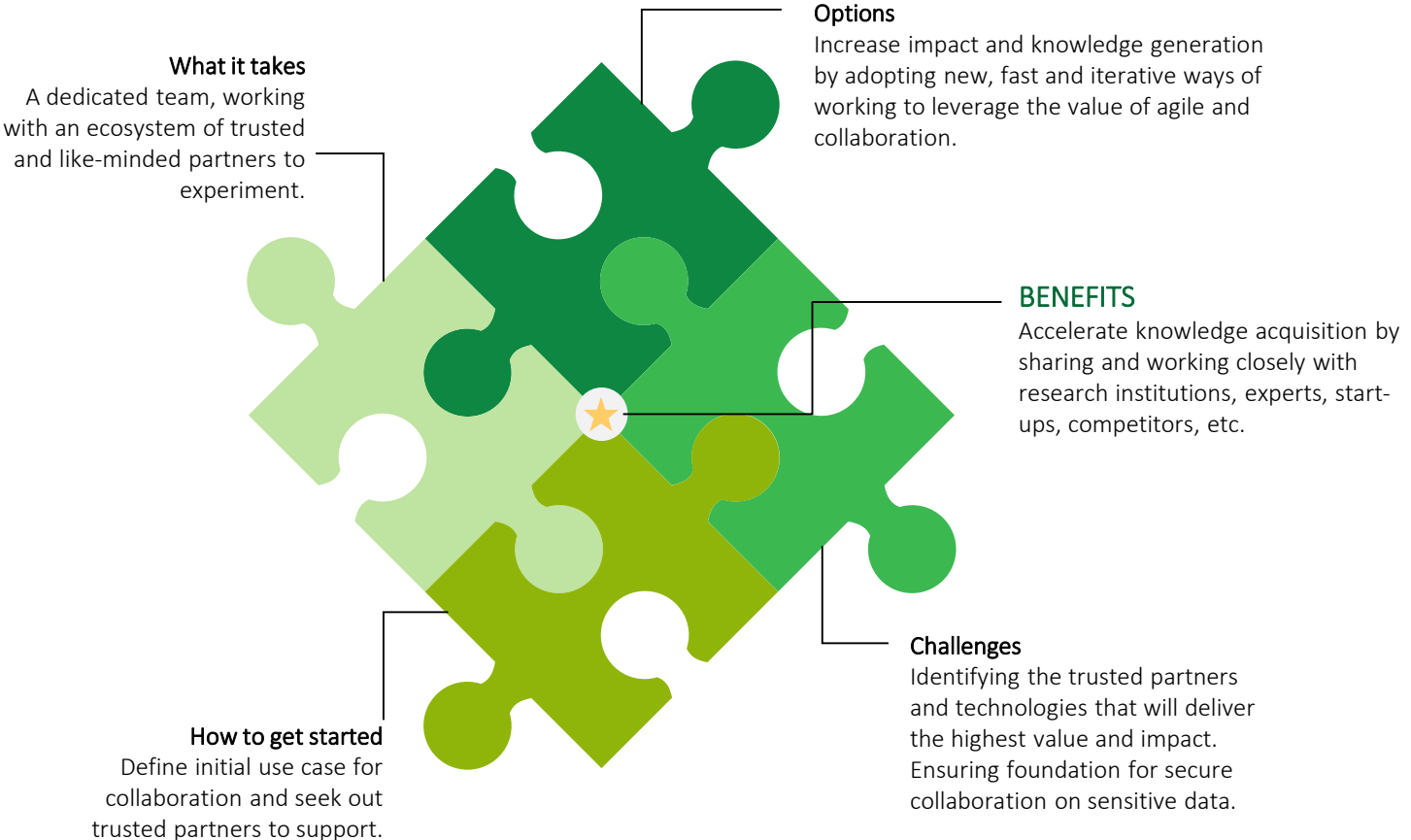
Example – Insights for COOs

**Deloitte.**

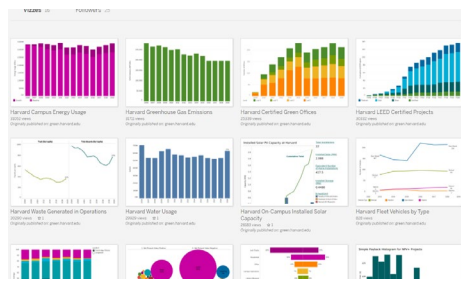


Digital Twin Architecture to combine insights, analysis, and simulations based on real data

# CONTINUE TO ITERATE AND COLLABORATE TO FIND NEW WAYS TO INCREASE INSIGHTS FOR GREATER IMPACT



Example – Insights for Everyone



Green Sustainability Hub - leveraging a platform to make all datasets available for collaboration to relevant stakeholders



# ESG DATA ANALYTICS CAN OPEN UP FOR DEEP INSIGHTS THAT DRIVE BETTER DECISION-MAKING

... provided there is the right architecture, governance and vigilance in place.



Getting ESG data management right is an **iterative process** that requires a continuous commitment to improving skills, competencies and ways of working.



Meaningful insights and impacts cannot be delivered alone by a core ESG-team but require the **commitment of the entire company**, often in collaboration with partners, suppliers and customers.



This simple loop starts with getting the 'data foundation' in order and then gradually increasing the technical complexity to **deliver greater insights and impact**.



## KEY TAKE-AWAYS

1. ESG data is evolving from static and backward-looking to dynamic and forward-looking, harnessing the digital revolution.
2. Embrace robust ESG data as a new window into your business. It will help you to govern sustainability at scale and achieve real ESG impact.
3. Keep calm. It's a journey. Start small and allow to grow big.

Data has a better idea

THANK YOU - PLEASE REACH OUT IF YOU WANT TO KNOW MORE



**Anne Kathrine Wennergren Holm**  
Partner  
Responsible Innovation & Tech | Digital Ethics

anneriksen@deloitte.dk  
+45 31 32 08 83



**Helena Barton**  
Partner  
Sustainability | ESG | Climate Risk

hbarton@deloitte.dk  
+45 30 93 68 13



**Carsten Brøns Andersen**  
Senior Manager  
Responsible Innovation & Tech | Digital Ethics

cabrandersen@deloitte.dk  
+45 30 93 52 99



This communication and any attachment to it is for internal distribution among personnel of Deloitte Touche Tohmatsu Limited (“DTTL”), its global network of member firms and their related entities (collectively, the “Deloitte organization”). It may contain confidential information and is intended solely for the use of the individual or entity to whom it is addressed. If you are not the intended recipient, please notify us immediately by replying to this email and then please delete this communication and all copies of it on your system. Please do not use this communication in any way. None of DTTL, its member firms, related entities, employees or agents shall be responsible for any loss or damage whatsoever arising directly or indirectly in connection with any person relying on this communication. DTTL and each of its member firms, and their related entities, are legally separate and independent entities.

Deloitte is a leading global provider of audit and assurance, consulting, financial advisory, risk advisory, tax and related services. Our global network of member firms and related entities in more than 150 countries and territories (collectively, the “Deloitte organization”) serves four out of five Fortune Global 500® companies. Learn how Deloitte’s approximately 330,000 people make an impact that matters at [www.deloitte.com](http://www.deloitte.com).

Deloitte refers to one or more of Deloitte Touche Tohmatsu Limited (“DTTL”), its global network of member firms, and their related entities (collectively, the “Deloitte organization”). DTTL (also referred to as “Deloitte Global”) and each of its member firms and related entities are legally separate and independent entities, which cannot obligate or bind each other in respect of third parties. DTTL and each DTTL member firm and related entity is liable only for its own acts and omissions, and not those of each other. DTTL does not provide services to clients. Please see [www.deloitte.com/about](http://www.deloitte.com/about) to learn more.