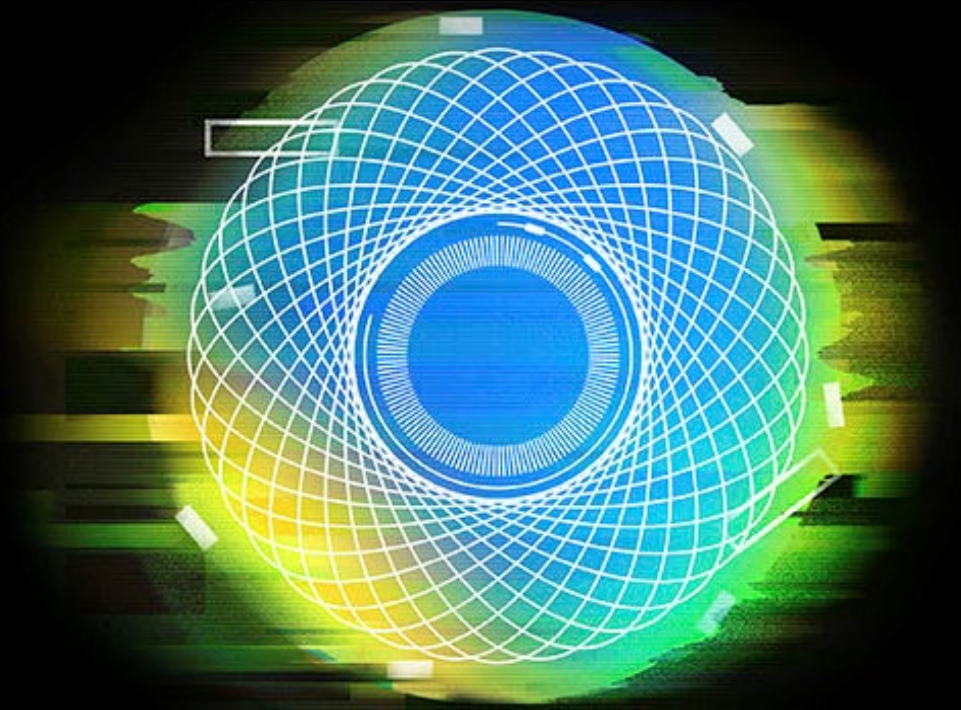


Deloitte.



Future of Financial Crime

Delivering a risk-based approach

Why intelligence-led risk management is key

Delivering a risk-based approach

Why intelligence-led risk management is key

This is the second article in our Future of Financial Crime series, with a focus on the importance of intelligence-led risk management as a foundation for a future financial crime framework.

The risk assessment is a critical tool which should sit at the heart of a financial services (FS) institution's financial crime control framework. However, it is often viewed as a regulatory driven exercise, which results in generic evaluations of the financial crime (FC) vulnerabilities that an institution is exposed to. Such outcomes provide limited actionable intelligence to enable appropriate adjustments to be made to financial crime controls. With financial crime threats ever-changing and becoming increasingly complex, this approach must evolve.

Typically, risk assessments are often limited by the following:

- Outdated intelligence about threats that is insufficient in the detail, accuracy and relevance needed to provide appropriate support for those responsible for risk management. This results in a lack of specificity in the identification, assessment, and prioritisation of the precise FC risks that the organisation faces. This can also mean an inability to articulate the threats in terms of their relevancy to an institution's customers, geographies, and products;
- a lack of clear and timely linkage from the risks and threats identified to the preventative and detective controls for mitigating those risks;
- static documentation that is updated on an annual or bi-annual basis, with a significant time lag between changes in the risk assessment and associated adjustments to the control framework in response. For example, it can take a number of months for transaction monitoring (TM) rules, or several years for changes in due diligence (DD) requirements and processes to react to a changing threat landscape; and,
- manual processes which do not provide a continuous view, meaning that risks are not quantified on a consistent basis or measured dynamically against relative likelihood and impact.

Adopting a more dynamic and integrated approach to risk assessment and control modulation is key to addressing the limitations of risk assessments and meeting the changing regulatory expectations. Change can be incremental, and specific solutions will vary across FS institutions (based on sector, maturity, products, and customer base), but it is our belief that the following changes are needed:

- A move to a proactive risk assessment approach which combines intelligence from internal sources (such as previous cases, trend analysis, changes to the business, etc.) with the enhanced use of open-source intelligence and increased and active engagement in public-private information sharing platforms. In addition, the development and use of private-to-private intelligence sharing functions will be key to continuously update the understanding of the risks and to articulate the specific threats faced by the organisation. The role of the financial intelligence unit (FIU) is critical here, and we will share our views on the future of the FIU in a later article in this series;
- The implementation of an enhanced methodology to address the changing landscape of threats, by assessing and quantifying the inherent risk, and by assessing the current controls and their effectiveness in order to calculate and document the residual risk - using quantitative measures (where available/applicable). Through this methodology, the level of risk mitigation and risk acceptance of residual risk should be aligned to the commercial ambitions and risk appetite of the FS institution and governed accordingly.
- Greater integration of the risk assessment, where possible, through dynamic values directly linked to the control framework. For example, a dynamic link to the client DD scoring or scoring used in integrated monitoring and segmentation, to accelerate re-assessment when risks change. This would help to reduce the often-significant costs associated with managing and responding to changes in risk;
- For larger FS institutions, the risk assessment and control library should be implemented in a suitable platform, that can directly integrate with the control environment and provide demonstrable visibility of risks and controls.
- In adopting these changes, we believe that it is possible to achieve three key benefits:

1. A demonstrable risk-based approach.

- Through the up-to-date identification and assessment of FC risks faced and the mitigating controls implemented by the FS institution, it will be possible to better demonstrate to a regulator (or other stakeholders) that a risk-based approach has been implemented effectively.

A rigorous approach that is specific and has used appropriate sources and considered likely risks will provide a more defensible position in the event of regulatory scrutiny of a particular relationship or incident, and so reduce the likelihood of regulatory supervision or enforcement.

2. Better control design and management

By explicitly linking controls to the risks and providing a greater level of specificity in the risks and threats faced, the mitigating controls can be specifically designed to focus on preventing and detecting risks.

This documented linkage also reduces the possibility that key controls might be removed or updated inadvertently, without appropriate governance. Additionally, by providing clear identification of the underlying risks that are being mitigated, reviews, escalations and responses by an investigator can be more tailored, so that they are more efficient and effective.

“... the evolution of the risk assessment and control framework as set out in this article is fundamental to enabling further changes that are needed in a future financial crime capability.”

3. Competitive advantage

Organisations stand to gain a competitive advantage if they can rapidly focus their FC investments to mitigate the most

serious risks. By focusing controls on the prioritised areas, there is an opportunity to be more efficient, by dialling down other controls as appropriate and achieving cost savings.

This more measured risk assessment and control approach enables an FS institution to deal with emergent risks as ‘business as usual’ and avoids the need for ‘fire drills’ that disrupt normal operations.

Additionally, greater confidence in the effectiveness of the institution's controls will help an FS institution to grow through the safe offering of new products and services, and more effective pricing of this risk. This could also allow the entry into new jurisdictions, which could otherwise be outside of the organisation's risk appetite. We will explore this further in the upcoming article on dynamic customer lifecycle management.

In summary, the changes suggested here will deliver a sophisticated and proactive intelligence-led approach to managing risk that identifies the changing nature of FC threats and dynamically adjusts the mitigating controls on the highest priority risks, allowing the dialling down of effort in other areas.

We believe the evolution of the risk assessment and control framework as set out in this article is fundamental to enabling further changes that are needed in a future financial crime capability. Specifically, changing the approach to due diligence to create a more dynamic customer lifecycle management, and the convergence of monitoring to allow the simplification and streamlining of FC operations. Overall, this will drive a move to a more efficient and effective approach to fighting financial crime.

Get in touch

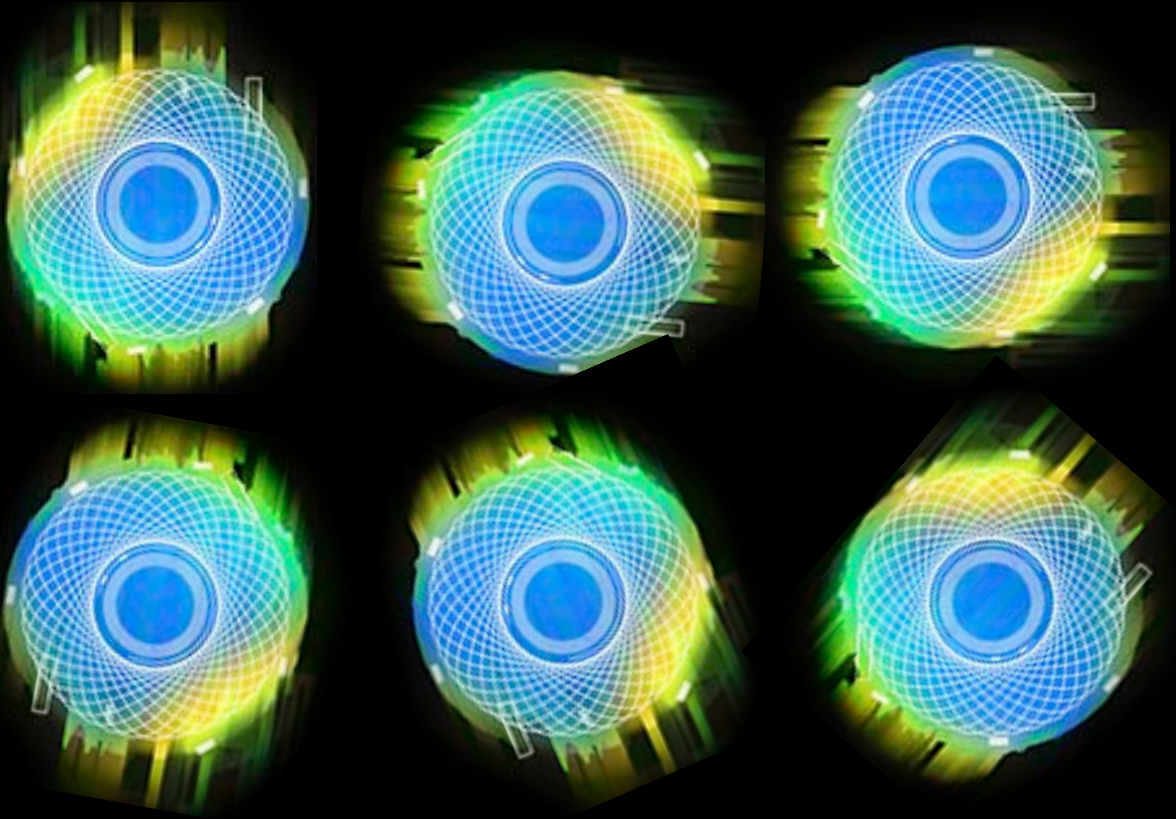
Please get in touch if you would like to discuss this topic further. Also look out for future articles in our Future of Financial Crime series – up next, a focus on intelligence-led risk management– what this means, why it's important, and some of the areas that need to be a focus over the short, medium, and longer-term.



Sofus Emil Tengvad
Managing Partner
Forensic
stengvad@deloitte.dk
+45 30 38 03 27



Rasmus Grejs Beyer
Partner
Financial Crime Advisory
rbeyer@deloitte.dk
+45 24 94 59 22



Deloitte provides industry-leading audit and assurance, tax and legal, consulting, financial advisory, and risk advisory services to nearly 90% of the Fortune Global 500® and thousands of private companies. Our people deliver measurable and lasting results that help reinforce public trust in capital markets, enable clients to transform and thrive, and lead the way toward a stronger economy, a more equitable society, and a sustainable world. Building on its 175-plus year history, Deloitte spans more than 150 countries and territories. Learn how Deloitte’s approximately 457,000 people worldwide make an impact that matters at www.deloitte.com

Deloitte refers to one or more of Deloitte Touche Tohmatsu Limited (“DTTL”), its global network of member firms, and their related entities (collectively, the “Deloitte organization”). DTTL (also referred to as “Deloitte Global”) and each of its member firms and related entities are legally separate and independent entities, which cannot obligate or bind each other in respect of third parties. DTTL and each DTTL member firm and related entity is liable only for its own acts and omissions, and not those of each other. DTTL does not provide services to clients.

This communication contains general information only, and none of Deloitte Touche Tohmatsu Limited (“DTTL”), its global network of member firms or their related entities (collectively, the “Deloitte organization”) is, by means of this communication, rendering professional advice or services. Before making any decision or taking any action that may affect your finances or your business, you should consult a qualified professional adviser.

No representations, warranties or undertakings (express or implied) are given as to the accuracy or completeness of the information in this communication, and none of DTTL, its member firms, related entities, employees or agents shall be liable or responsible for any loss or damage whatsoever arising directly or indirectly in connection with any person relying on this communication. Please see www.deloitte.com/about to learn more.