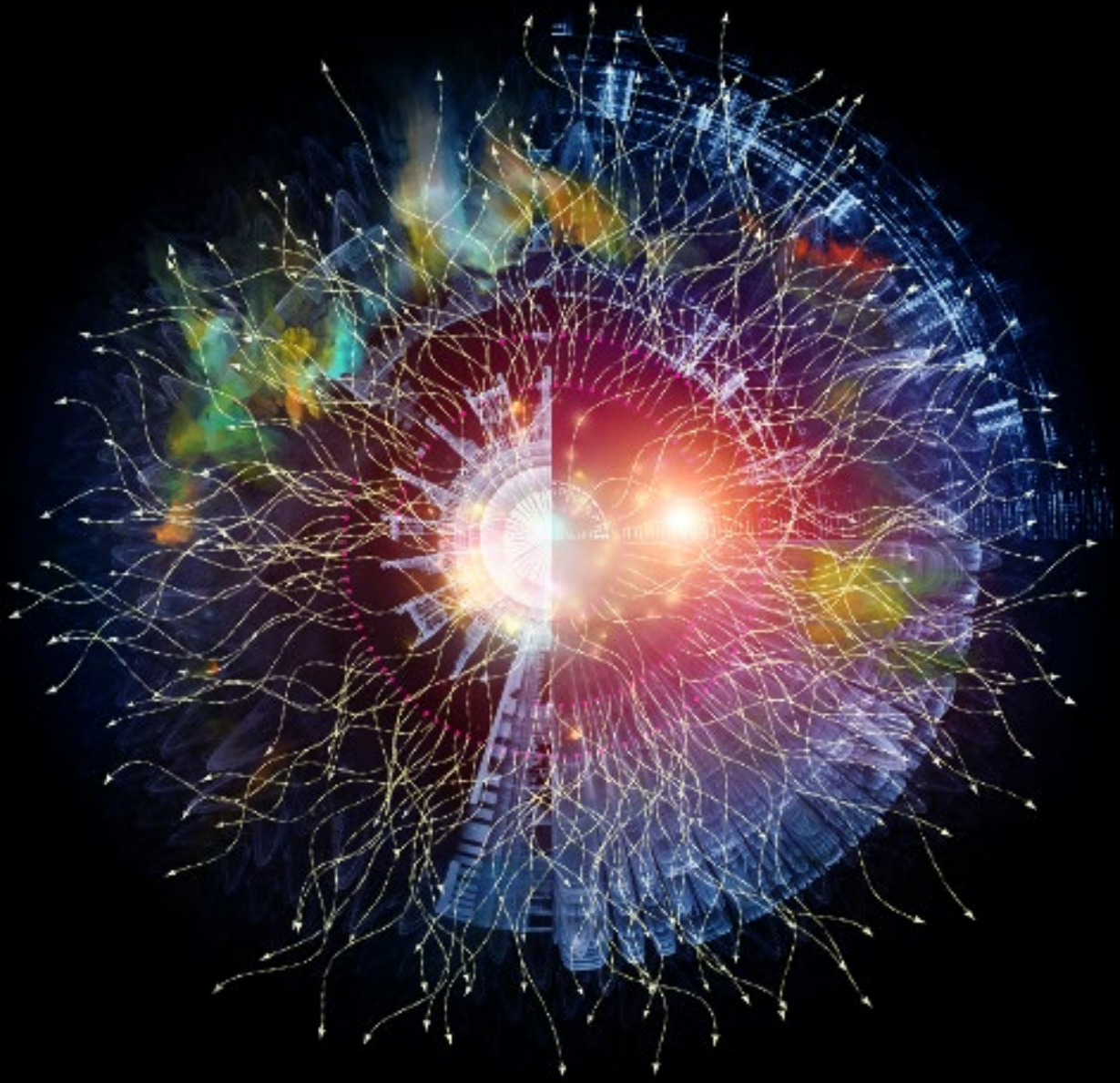
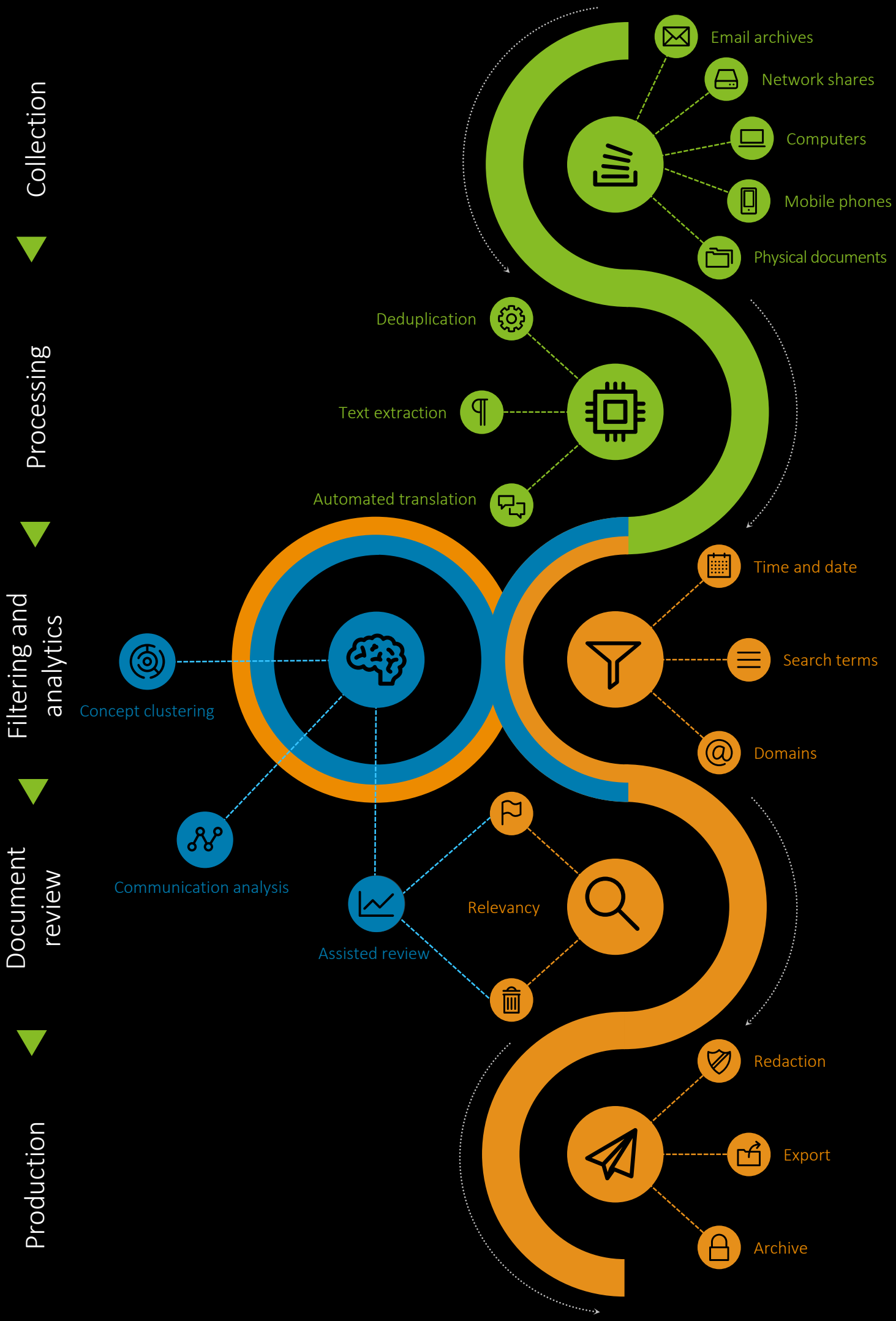


Deloitte.



Deloitte Forensic: Discovery services

Obtaining significant insights from unstructured data



Collection

Processing

Filtering and analytics

Document review

Production

- Email archives
- Network shares
- Computers
- Mobile phones
- Physical documents

- Deduplication
- Text extraction
- Automated translation

Concept clustering

Communication analysis

- Time and date
- Search terms
- Domains

- Relevancy
- Assisted review

- Redaction
- Export
- Archive

Our approach to the eDiscovery process



Our applied eDiscovery method ensures precise tracking of evidence from the first intake of devices and data to the final produced relevant documents during investigations, litigation activities and disputes, regulatory inquiries, etc. During the entire eDiscovery process, all data is hosted in our **local Copenhagen datacentre** secured with multiple layers of physical and software security, server and storage redundancy to guarantee excellent uptimes and an **efficient and structured review process** through our document review platform, **Relativity**. Through the powerful machine learning technologies in **Brainspace**, we also offer our clients the possibility of obtaining additional insights into relevant documents and files to establish facts in the case.

We assist during all phases of the eDiscovery life cycle, including the review phase if needed, to ensure a structured approach throughout the entire process.

eDiscovery workflow

The eDiscovery process typically consists of five overall phases starting with the data **collection** and inventorying of collected evidence. Data can be collected and extracted from a variety of sources. The **processing** phase deduplicates data to reduce data redundancy and to remove immaterial documents with no review value. Text data is extracted from relevant document types, such as emails, office document types and pdf files to make all content searchable.

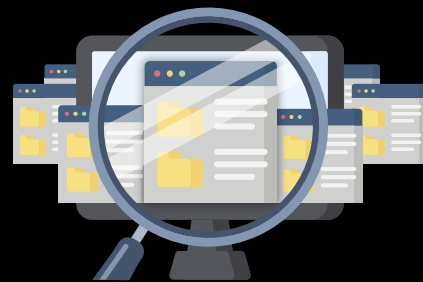
We offer Relativity as market-leading online document review platform, where data in the next phase is put through the **filtering and analytics** stage and adjusted to the scope of the document review. Data is typically filtered using specific search terms and can be culled further by applying selected time and data filters, searching for certain email accounts, domains or other relevant search criteria. The filtered documents and files are subsequently prepared and pushed out for **document review**, often in document batch sets for coding according to relevancy and potential issues.

During the closing stages, relevant documents can be **produced** and branded with control numbers, redacted if needed and exported as final deliverables and potential evidence. This step can also be performed on an ongoing basis as the review progresses and areas of concern or certain topics are concluded.

Advanced analytics

During the Relativity workflow, we leverage advanced analytics to enhance the review and to find other documents similar to already reviewed and relevant tagged documents. This will often speed up the review processes significantly, for example by pushing documents with high similarity in front of the review queue.

Advanced analytics can also be applied preliminary to the review process. This helps to find related and useful concepts and other related terms in respect to the applied search term lists to include in the search process or for review on an ad-hoc basis.



Automated translations

Understanding documents authored in other languages can often be difficult for non-native speakers. With advanced translation software, we can translate relevant documents between many different languages and preserve the document's native formats and layouts. The translated documents are available in Relativity.

To keep sensitive information within our perimeter, all translations are performed "on premises" in our local datacentre so no data is sent to the cloud for any translations of relevant documents or files.

Who can you contact



Sofus Emil Tengvad

Partner

✉ stengvad@deloitte.dk

☎ +45 30 38 03 27



Kim Sparre

Director

✉ ksparre@deloitte.dk

☎ +45 30 93 41 39

Deloitte.

This communication contains general information only, and none of Deloitte Touche Tohmatsu Limited (“DTTL”), its global network of member firms or their related entities (collectively, the “Deloitte organization”) is, by means of this communication, rendering professional advice or services. Before making any decision or taking any action that may affect your finances or your business, you should consult a qualified professional adviser.

No representations, warranties or undertakings (express or implied) are given as to the accuracy or completeness of the information in this communication, and none of DTTL, its member firms, related entities, employees or agents shall be liable or responsible for any loss or damage whatsoever arising directly or indirectly in connection with any person relying on this communication. DTTL and each of its member firms, and their related entities, are legally separate and independent entities.

About Deloitte

Deloitte is a leading global provider of audit and assurance, consulting, financial advisory, risk advisory, tax and related services. Our global network of member firms and related entities in more than 150 countries and territories (collectively, the “Deloitte organization”) serves four out of five Fortune Global 500® companies. Learn how Deloitte’s approximately 312,000 people make an impact that matters at www.deloitte.com.

Deloitte Touche Tohmatsu Limited

Deloitte refers to one or more of Deloitte Touche Tohmatsu Limited (“DTTL”), its global network of member firms, and their related entities (collectively, the “Deloitte organization”). DTTL (also referred to as “Deloitte Global”) and each of its member firms and related entities are legally separate and independent entities, which cannot obligate or bind each other in respect of third parties. DTTL and each DTTL member firm and related entity is liable only for its own acts and omissions, and not those of each other. DTTL does not provide services to clients. Please see www.deloitte.com/about to learn more.