



Global Trade Radar

Identify your customs risk and opportunities

Complex organizations and legislation, various IT environments and different authority approaches to customs handling often have a negative impact on the general overview of the businesses internal customs compliance and payments.

Deloitte has developed the Global Trade Radar (GTR), aimed at providing an overview of risks and opportunities for customs processes and supply chains in relation to transactions with countries outside the EU.

The GTR contains a series of tests and analysis, laying out the basis for your controlling, optimization and risk mitigation of the customs processes.

Why Global Trade Radar?

Many businesses have outsourced the customs handling to external service providers. Consequently, many businesses have no immediate overview of information filed with the authorities.

Based on information from the company's import declarations obtained from the local authorities or from brokers, the Global Trade Radar can provide your business with analysis and a general overview of your imports for a given period.

Besides, the benefits from the analysis, obtaining data from the authorities provides the business with an opportunity to match the information filed to the authorities with the data in own systems and thereby the possibility to identify any gaps and/or deviations.

Global Trade Radar is a multi-jurisdictional customs data analytics tool that will give importers clear insight into their global customs profile, to facilitate informed decision-making.

The data background

Global Trade Radar analyzes an organization's import data acquired (where possible) directly from customs authorities.

Deloitte will either apply for the data from the authorities or provide the brokers with a template for data extraction.

What do you get?

You will get online access to your data in the Global Trade Radar model. The access to the model will run for an agreed-upon period and covers the needed number of users.

If needed, Deloitte can provide a commented analysis along with the access to the model, thus assisting you in prioritizing your customs controlling efforts.

Next step

We will be happy to demonstrate the contents of the model to you and to talk you through the potential benefits from running the analysis.

If you want to know more or if you would like a presentation of the model, please contact us.



Lone Friis

Partner

lfriis@deloitte.dk

+45 22 20 22 02



Dorthe Higham

Senior Manager

dhigham@deloitte.dk

+45 30 93 56 43



Mikkel Skaksen

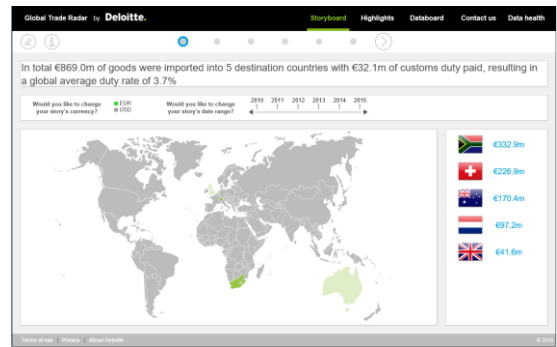
Director

mskaksen@deloitte.dk

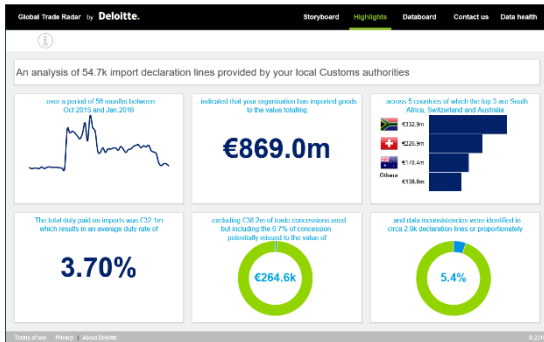
+45 30 93 48 96

Outcome

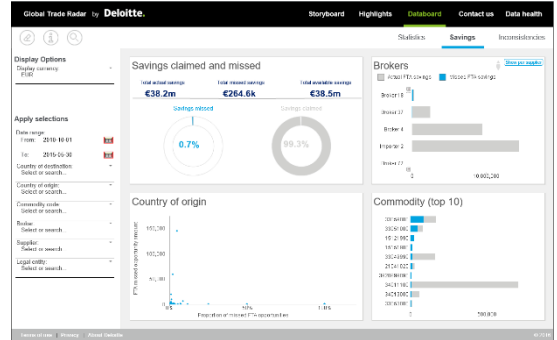
- In the GTR data and tests are visualized for optimal user approach
- Overview of transactions can be drilled down to transaction line detail level and extracted to Excel
- Potential opportunities and risks are summarized through a series of informative and interactive reports



The model handles data from multiple jurisdictions and entities, making it possible to obtain a global overview of customs compliance



The analysis and tests, including the fiscal quantification of test results, aids the business in prioritizing the controlling efforts



The model provides a high level of details, which makes it possible to identify the actual transactions selected for further review

Client reference	Legal entity	Declaration number	Declaration line number	Assignment date	Actual date	Learning port code	Discharge port code	Originator name	Partner name	Supplier name	Item
GlobalTradeComms	Importeur 3	000305370820210212120563	1	2012-01-03	2012-01-03	Importeur 3	Partner 3	Supplier 3	Partner 3	Supplier 3	Test
GlobalTradeComms	Importeur 3	000305370820210212120567	1	2012-01-03	2012-01-03	Importeur 3	Partner 3	Supplier 3	Partner 3	Supplier 3	Test
GlobalTradeComms	Importeur 3	000305370820210212120569	1	2012-01-03	2012-01-03	Importeur 3	Partner 3	Supplier 3	Partner 3	Supplier 3	Test
GlobalTradeComms	Importeur 3	000305370820210212120570	1	2012-01-03	2012-01-03	Importeur 3	Partner 3	Supplier 3	Partner 3	Supplier 3	Test
GlobalTradeComms	Importeur 3	000305370820210212120566	1	2012-01-03	2012-01-03	Importeur 3	Partner 3	Supplier 3	Partner 3	Supplier 3	Test
GlobalTradeComms	Importeur 3	000305370820210212120565	1	2012-01-03	2012-01-03	Importeur 3	Partner 3	Supplier 3	Partner 3	Supplier 3	Test
GlobalTradeComms	Importeur 3	000305370820210212120568	1	2012-01-03	2012-01-03	Importeur 3	Partner 3	Supplier 3	Partner 3	Supplier 3	Test
GlobalTradeComms	Importeur 3	000305370820210212120567	1	2012-01-03	2012-01-03	Importeur 3	Partner 3	Supplier 3	Partner 3	Supplier 3	Test
GlobalTradeComms	Importeur 3	000305370820210212120564	1	2012-01-03	2012-01-03	Importeur 3	Partner 3	Supplier 3	Partner 3	Supplier 3	Test
GlobalTradeComms	Importeur 3	000305370820210212120562	1	2012-01-03	2012-01-03	Importeur 3	Partner 3	Supplier 3	Partner 3	Supplier 3	Test
GlobalTradeComms	Importeur 3	000305370820210212120561	1	2012-01-03	2012-01-03	Importeur 3	Partner 3	Supplier 3	Partner 3	Supplier 3	Test
GlobalTradeComms	Importeur 3	000305370820210212120560	1	2012-01-03	2012-01-03	Importeur 3	Partner 3	Supplier 3	Partner 3	Supplier 3	Test
GlobalTradeComms	Importeur 3	000305370820210212120559	1	2012-01-03	2012-01-03	Importeur 3	Partner 3	Supplier 3	Partner 3	Supplier 3	Test
GlobalTradeComms	Importeur 3	000305370820210212120558	1	2012-01-03	2012-01-03	Importeur 3	Partner 3	Supplier 3	Partner 3	Supplier 3	Test
GlobalTradeComms	Importeur 3	000305370820210212120557	1	2012-01-03	2012-01-03	Importeur 3	Partner 3	Supplier 3	Partner 3	Supplier 3	Test
GlobalTradeComms	Importeur 3	000305370820210212120556	1	2012-01-03	2012-01-03	Importeur 3	Partner 3	Supplier 3	Partner 3	Supplier 3	Test
GlobalTradeComms	Importeur 3	000305370820210212120555	1	2012-01-03	2012-01-03	Importeur 3	Partner 3	Supplier 3	Partner 3	Supplier 3	Test
GlobalTradeComms	Importeur 3	000305370820210212120554	1	2012-01-03	2012-01-03	Importeur 3	Partner 3	Supplier 3	Partner 3	Supplier 3	Test
GlobalTradeComms	Importeur 3	000305370820210212120553	1	2012-01-03	2012-01-03	Importeur 3	Partner 3	Supplier 3	Partner 3	Supplier 3	Test
GlobalTradeComms	Importeur 3	000305370820210212120552	1	2012-01-03	2012-01-03	Importeur 3	Partner 3	Supplier 3	Partner 3	Supplier 3	Test
GlobalTradeComms	Importeur 3	000305370820210212120551	1	2012-01-03	2012-01-03	Importeur 3	Partner 3	Supplier 3	Partner 3	Supplier 3	Test
GlobalTradeComms	Importeur 3	000305370820210212120550	1	2012-01-03	2012-01-03	Importeur 3	Partner 3	Supplier 3	Partner 3	Supplier 3	Test
GlobalTradeComms	Importeur 3	000305370820210212120549	1	2012-01-03	2012-01-03	Importeur 3	Partner 3	Supplier 3	Partner 3	Supplier 3	Test
GlobalTradeComms	Importeur 3	000305370820210212120548	1	2012-01-03	2012-01-03	Importeur 3	Partner 3	Supplier 3	Partner 3	Supplier 3	Test
GlobalTradeComms	Importeur 3	000305370820210212120547	1	2012-01-03	2012-01-03	Importeur 3	Partner 3	Supplier 3	Partner 3	Supplier 3	Test
GlobalTradeComms	Importeur 3	000305370820210212120546	1	2012-01-03	2012-01-03	Importeur 3	Partner 3	Supplier 3	Partner 3	Supplier 3	Test
GlobalTradeComms	Importeur 3	000305370820210212120545	1	2012-01-03	2012-01-03	Importeur 3	Partner 3	Supplier 3	Partner 3	Supplier 3	Test
GlobalTradeComms	Importeur 3	000305370820210212120544	1	2012-01-03	2012-01-03	Importeur 3	Partner 3	Supplier 3	Partner 3	Supplier 3	Test
GlobalTradeComms	Importeur 3	000305370820210212120543	1	2012-01-03	2012-01-03	Importeur 3	Partner 3	Supplier 3	Partner 3	Supplier 3	Test
GlobalTradeComms	Importeur 3	000305370820210212120542	1	2012-01-03	2012-01-03	Importeur 3	Partner 3	Supplier 3	Partner 3	Supplier 3	Test
GlobalTradeComms	Importeur 3	000305370820210212120541	1	2012-01-03	2012-01-03	Importeur 3	Partner 3	Supplier 3	Partner 3	Supplier 3	Test
GlobalTradeComms	Importeur 3	000305370820210212120540	1	2012-01-03	2012-01-03	Importeur 3	Partner 3	Supplier 3	Partner 3	Supplier 3	Test
GlobalTradeComms	Importeur 3	000305370820210212120539	1	2012-01-03	2012-01-03	Importeur 3	Partner 3	Supplier 3	Partner 3	Supplier 3	Test
GlobalTradeComms	Importeur 3	000305370820210212120538	1	2012-01-03	2012-01-03	Importeur 3	Partner 3	Supplier 3	Partner 3	Supplier 3	Test
GlobalTradeComms	Importeur 3	000305370820210212120537	1	2012-01-03	2012-01-03	Importeur 3	Partner 3	Supplier 3	Partner 3	Supplier 3	Test
GlobalTradeComms	Importeur 3	000305370820210212120536	1	2012-01-03	2012-01-03	Importeur 3	Partner 3	Supplier 3	Partner 3	Supplier 3	Test
GlobalTradeComms	Importeur 3	000305370820210212120535	1	2012-01-03	2012-01-03	Importeur 3	Partner 3	Supplier 3	Partner 3	Supplier 3	Test
GlobalTradeComms	Importeur 3	000305370820210212120534	1	2012-01-03	2012-01-03	Importeur 3	Partner 3	Supplier 3	Partner 3	Supplier 3	Test
GlobalTradeComms	Importeur 3	000305370820210212120533	1	2012-01-03	2012-01-03	Importeur 3	Partner 3	Supplier 3	Partner 3	Supplier 3	Test
GlobalTradeComms	Importeur 3	000305370820210212120532	1	2012-01-03	2012-01-03	Importeur 3	Partner 3	Supplier 3	Partner 3	Supplier 3	Test
GlobalTradeComms	Importeur 3	000305370820210212120531	1	2012-01-03	2012-01-03	Importeur 3	Partner 3	Supplier 3	Partner 3	Supplier 3	Test
GlobalTradeComms	Importeur 3	000305370820210212120530	1	2012-01-03	2012-01-03	Importeur 3	Partner 3	Supplier 3	Partner 3	Supplier 3	Test
GlobalTradeComms	Importeur 3	000305370820210212120529	1	2012-01-03	2012-01-03	Importeur 3	Partner 3	Supplier 3	Partner 3	Supplier 3	Test
GlobalTradeComms	Importeur 3	000305370820210212120528	1	2012-01-03	2012-01-03	Importeur 3	Partner 3	Supplier 3	Partner 3	Supplier 3	Test
GlobalTradeComms	Importeur 3	000305370820210212120527	1	2012-01-03	2012-01-03	Importeur 3	Partner 3	Supplier 3	Partner 3	Supplier 3	Test
GlobalTradeComms	Importeur 3	000305370820210212120526	1	2012-01-03	2012-01-03	Importeur 3	Partner 3	Supplier 3	Partner 3	Supplier 3	Test
GlobalTradeComms	Importeur 3	000305370820210212120525	1	2012-01-03	2012-01-03	Importeur 3	Partner 3	Supplier 3	Partner 3	Supplier 3	Test
GlobalTradeComms	Importeur 3	000305370820210212120524	1	2012-01-03	2012-01-03	Importeur 3	Partner 3	Supplier 3	Partner 3	Supplier 3	Test
GlobalTradeComms	Importeur 3	000305370820210212120523	1	2012-01-03	2012-01-03	Importeur 3	Partner 3	Supplier 3	Partner 3	Supplier 3	Test
GlobalTradeComms	Importeur 3	000305370820210212120522	1	2012-01-03	2012-01-03	Importeur 3	Partner 3	Supplier 3	Partner 3	Supplier 3	Test
GlobalTradeComms	Importeur 3	000305370820210212120521	1	2012-01-03	2012-01-03	Importeur 3	Partner 3	Supplier 3	Partner 3	Supplier 3	Test
GlobalTradeComms	Importeur 3	000305370820210212120520	1	2012-01-03	2012-01-03	Importeur 3	Partner 3	Supplier 3	Partner 3	Supplier 3	Test
GlobalTradeComms	Importeur 3	000305370820210212120519	1	2012-01-03	2012-01-03	Importeur 3	Partner 3	Supplier 3	Partner 3	Supplier 3	Test
GlobalTradeComms	Importeur 3	000305370820210212120518	1	2012-01-03	2012-01-03	Importeur 3	Partner 3	Supplier 3	Partner 3	Supplier 3	Test
GlobalTradeComms	Importeur 3	000305370820210212120517	1	2012-01-03	2012-01-03	Importeur 3	Partner 3	Supplier 3	Partner 3	Supplier 3	Test
GlobalTradeComms	Importeur 3	000305370820210212120516	1	2012-01-03	2012-01-03	Importeur 3	Partner 3	Supplier 3	Partner 3	Supplier 3	Test
GlobalTradeComms	Importeur 3	000305370820210212120515	1	2012-01-03	2012-01-03	Importeur 3	Partner 3	Supplier 3	Partner 3	Supplier 3	Test
GlobalTradeComms	Importeur 3	000305370820210212120514	1	2012-01-03	2012-01-03	Importeur 3	Partner 3	Supplier 3	Partner 3	Supplier 3	Test
GlobalTradeComms	Importeur 3	000305370820210212120513	1	2012-01-03	2012-01-03	Importeur 3	Partner 3	Supplier 3	Partner 3	Supplier 3	Test
GlobalTradeComms	Importeur 3	000305370820210212120512	1	2012-01-03	2012-01-03	Importeur 3	Partner 3	Supplier 3	Partner 3	Supplier 3	Test
GlobalTradeComms	Importeur 3	000305370820210212120511	1	2012-01-03	2012-01-03	Importeur 3	Partner 3	Supplier 3	Partner 3	Supplier 3	Test
GlobalTradeComms	Importeur 3	000305370820210212120510	1	2012-01-03	2012-01-03	Importeur 3	Partner 3	Supplier 3	Partner 3	Supplier 3	Test
GlobalTradeComms	Importeur 3	000305370820210212120509	1	2012-01-03	2012-01-03	Importeur 3	Partner 3	Supplier 3	Partner 3	Supplier 3	Test
GlobalTradeComms	Importeur 3	000305370820210212120508	1	2012-01-03	2012-01-03	Importeur 3	Partner 3	Supplier 3	Partner 3	Supplier 3	Test
GlobalTradeComms	Importeur 3	000305370820210212120507	1	2012-01-03	2012-01-03	Importeur 3	Partner 3	Supplier 3	Partner 3	Supplier 3	Test
GlobalTradeComms	Importeur 3	000305370820210212120506	1	2012-01-03	2012-01-03	Importeur 3	Partner 3	Supplier 3	Partner 3	Supplier 3	Test
GlobalTradeComms	Importeur 3	000305370820210212120505	1	2012-01-03	2012-01-03	Importeur 3	Partner 3	Supplier 3	Partner 3	Supplier 3	Test
GlobalTradeComms	Importeur 3	000305370820210212120504	1	2012-01-03	2012-01-03	Importeur 3	Partner 3	Supplier 3	Partner 3	Supplier 3	Test
GlobalTradeComms	Importeur 3	000305370820210212120503	1	2012-01-03	2012-01-03	Importeur 3	Partner 3	Supplier 3	Partner 3	Supplier 3	Test
GlobalTradeComms	Importeur 3	000305370820210212120502	1	2012-01-03	2012-01-03	Importeur 3	Partner 3	Supplier 3	Partner 3	Supplier 3	Test
GlobalTradeComms	Importeur 3	000305370820210212120501	1	2012-01-03	2012-01-03	Importeur 3	Partner 3	Supplier 3	Partner 3	Supplier 3	Test

Findings

- Unused possibilities for applying FTA's on imports
- Returned goods customs cleared as regular imports
- Errors in reported customs values for identical products

Global Trade Radar outputs can be used to:

- Identify potential customs savings either retrospectively or prospectively
- Correct master data
- Implement controls and ongoing customs compliance monitoring
- Add value to the business and supply chain

Gain insight	Increase quality
Identify & reduce risk	Generate cash & reduce potential for overpayments



About Deloitte

Deloitte provides audit, tax, consulting, and financial advisory services to public and private clients spanning multiple industries. With a globally connected network of member firms in more than 150 countries, Deloitte brings world-class capabilities and high-quality service to clients, delivering the insights they need to address their most complex business challenges. To learn more about how Deloitte's approximately 240,000 professionals make an impact that matters, please connect with us on Facebook, LinkedIn, or Twitter.

Deloitte Touche Tohmatsu Limited

Deloitte refers to one or more of Deloitte Touche Tohmatsu Limited, a UK private company limited by guarantee ("DTTL"), its network of member firms, and their related entities. DTTL and each of its member firms are legally separate and independent entities. DTTL (also referred to as "Deloitte Global") does not provide services to clients. Please see www.deloitte.com/about for a more detailed description of DTTL and its member firms.