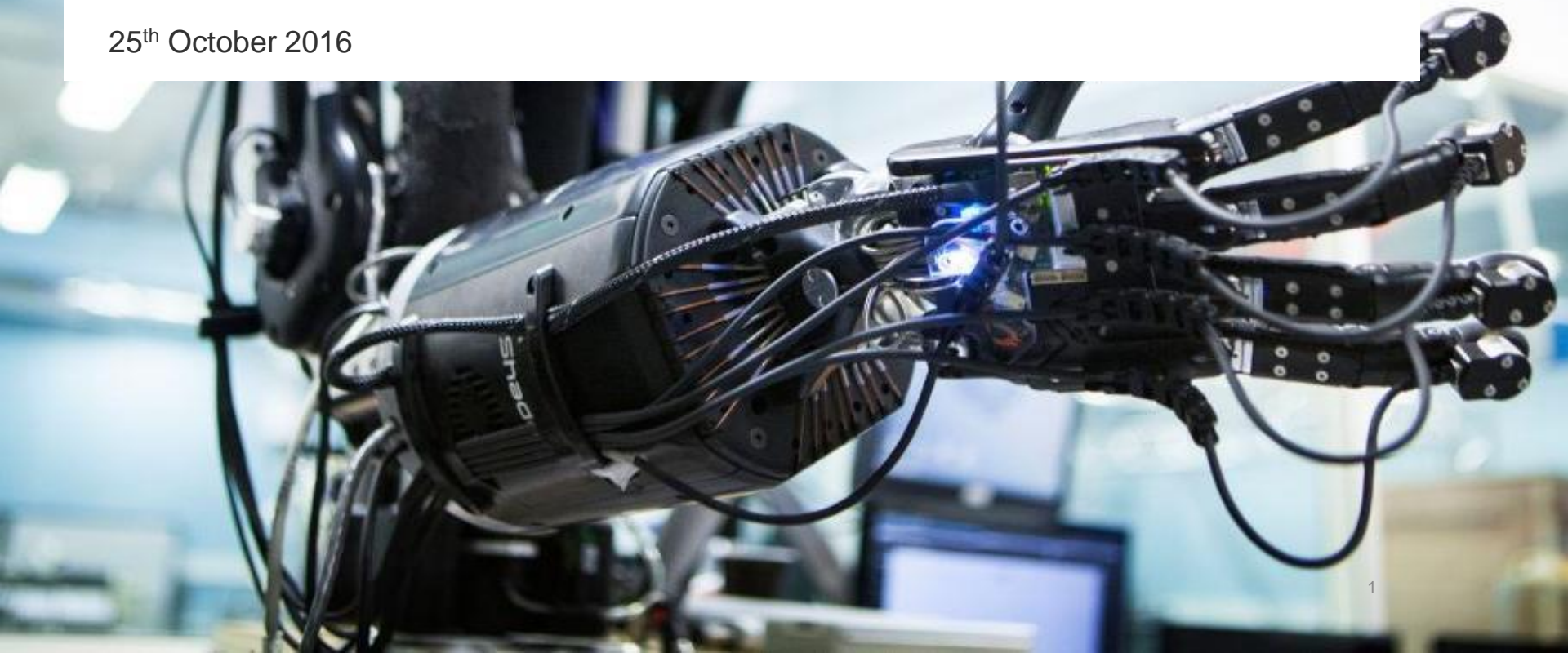


Robotic Process Automation

The Robots are coming....

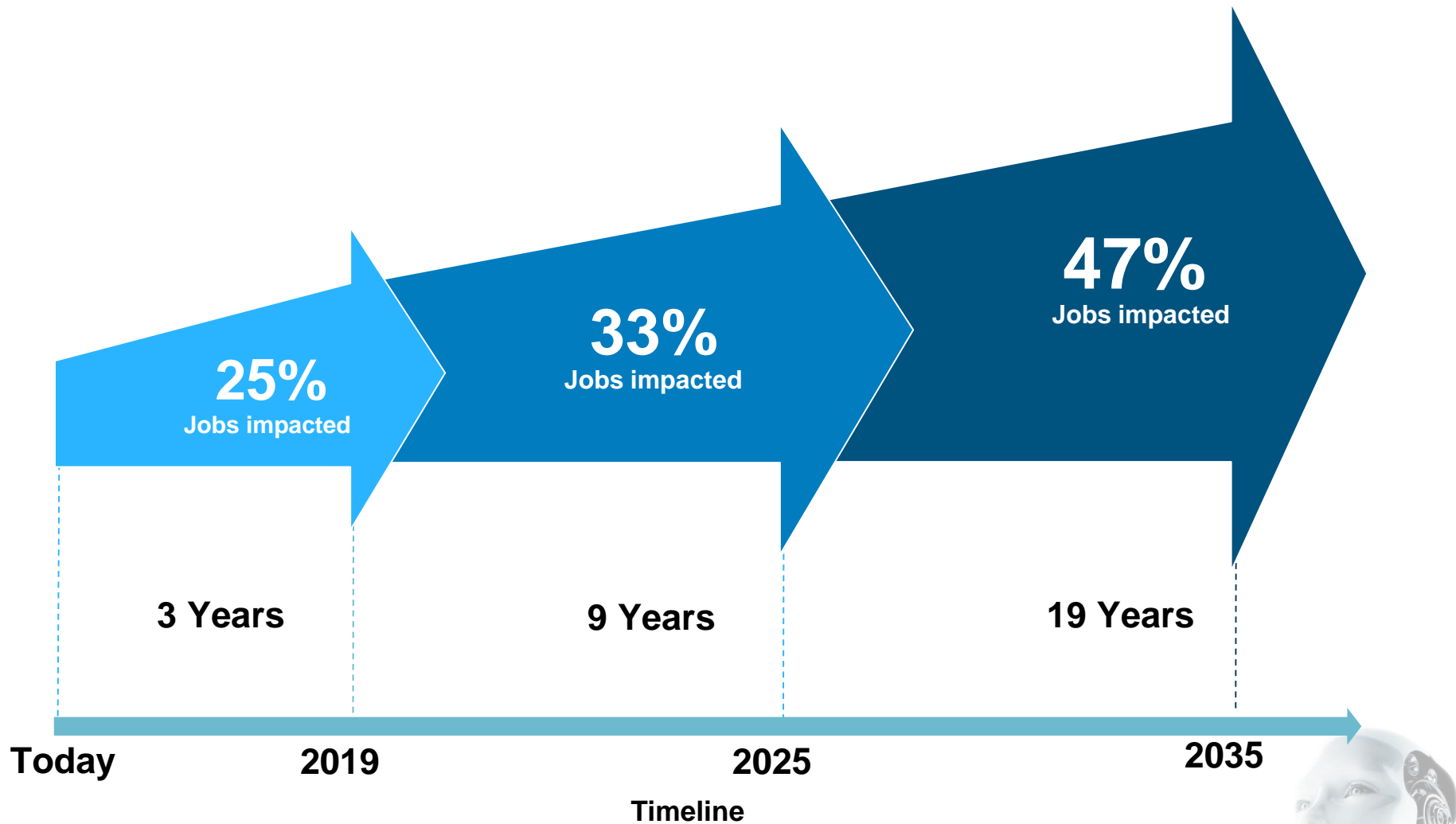
Abhijit Tuljapurkar
Intelligent Automation Lead
atuljapurkar@deloitte.dk

25th October 2016



Human – machine changed paradigm?

AUTOMATION..... TRANSFORMING HUMAN WORKFORCE



Source: Forrester, Gartner, Oxford Martin



What is Robotic Process Automation?

(1/2)

Robotic process automation (RPA) is a way to **automate repetitive and rules-based processes**.



Software commonly known as a 'robot', is configured to model and quickly deploy automation across applications and systems

Mimics a human user – copies the actions of human user performing high volume, repetitive and rules-based tasks

New type of automation which is quick to implement, minimises the need for costly systems integration, can be scaled up and down at will



Swivel chair automation

What is Robotic Process Automation?

(2/2)

RPA is



Software Bot / Virtual Robot



Computer programs that automate repetitive rule-based tasks



Cross-functional and cross-application Robots

RPA is not



Walking, talking auto-bots



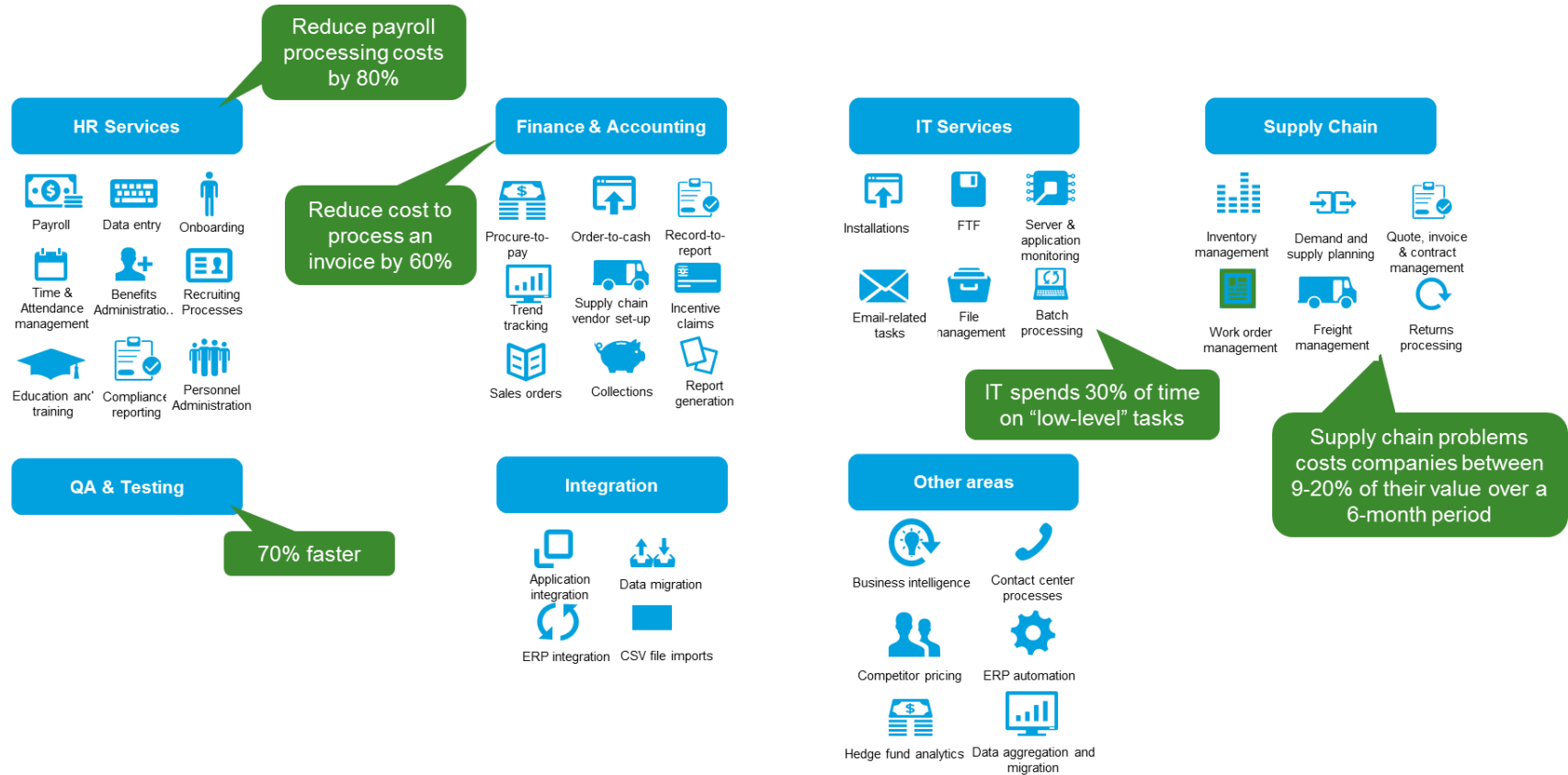
Physically existing machines processing paper



Artificial intelligence or voice recognition and reply software



Applicability of Robotics across functions...



Sources

<http://www.infoworld.com/article/2640554/green-it/boost-efficiency-and-cut-waste-with-supply-chain-automation.html>
<http://www.betimes.com/articles/how-much-rework-do-you-have.html>
<http://www.inc.com/guides/2010/12/how-to-automate-payroll.html>
<http://www.cse.sc.edu/~huhns/journalpapers/V5N4.pdf>
<http://www.computerweekly.com/news/2240174337/Low-level-tasks-eat-up-30-of-IT-departments-time>

How to get started?

Proof-of-concept



Automation potential evaluation



Implementation and roll out



4-6 weeks

2-6 weeks per process

- Conduct business and technical PoC to test the use and benefit of Robotics software
- Identify and prioritize candidate processes for potential Robotics implementation
- Evaluate and select RPA tool
- Make summary report and indicative business case for Robotics potential

Key Deliverables

- Successfully showcase of controlled Robotics PoC
- Automation potential assessment
- Process candidate evaluation and prioritisation
- Roadmap and Project plan

- Set up test and production environment
- Agile development & thorough testing and go-live with new processes
- Follow up on business case
- Define roadmap, organisation, governance and change management

Key Deliverables

- Implemented processes (map, develop, test, live)
- Organisational structure to support the initiative
- Establish support, monitoring and management of process execution

Operate



Ongoing

- Build Robotics CoE for consistent implementation and support
- Monitor, maintain and operate Robotics processes
- Governance and management

“The smart machine era will be the most disruptive in the history of IT”

- Gartner



How to get started?



Call Deloitte:

Abhijit Tuljapurkar

Intelligent Automation Lead, Deloitte Digital

atuljapurkar@deloitte.dk

Mobile: +45 40 49 78 51



Michael Borges

Partner, Head of Deloitte Digital

micborges@deloitte.dk

Mobile: +45 51 39 30 52



Deloitte refers to one or more of Deloitte Touche Tohmatsu Limited ("DTTL"), a UK private company limited by guarantee, and its network of member firms, each of which is a legally separate and independent entity. Please see www.deloitte.com/ch/about for a detailed description of the legal structure of DTTL and its member firms.

Deloitte Consulting AG is a subsidiary of Deloitte LLP, the United Kingdom member firm of DTTL.

This publication has been written in general terms and therefore cannot be relied on to cover specific situations; application of the principles set out will depend upon the particular circumstances involved and we recommend that you obtain professional advice before acting or refraining from acting on any of the contents of this publication. Deloitte Consulting AG would be pleased to advise readers on how to apply the principles set out in this publication to their specific circumstances. Deloitte Consulting AG accepts no duty of care or liability for any loss occasioned to any person acting or refraining from action as a result of any material in this publication.