

Deloitte.



#DeloitteInnovation: In-Time

How efficiently do you use SAP HANA®?

Deloitte + SAP

Deloitte In-Time in a nutshell

In-Time is the first and only SAP HANA® optimization software that can analyze the effectiveness of SAP HANA usage for better efficiency. The optimization occurs according to business needs for data freshness that is dependent on the available computing resources. The data freshness is defined as the In-Time service level agreement (SLA) and is guaranteed not to be higher than the defined value. This way, data processing and reaction time of a SAP HANA system also stay within the In-Time SLA.

As In-Time finds the right balance between processor and memory consumption, the need for scale-up or scale-out decreases. In short, In-Time sets free new computing capacities within the existing system.

We have developed the In-Time solution because we know and understand the importance of data freshness for modern enterprises. With In-Time, you can use the available hardware more effectively according to your expectations on data usage.

The application "Deloitte In-Time for Profit Contribution Report" that aims at optimizing batch processing was certified by SAP®.

"We have developed the In-Time solution because we know and understand the importance of data freshness for modern enterprises."

SAP HANA

The SAP HANA platform is a revolutionary in-memory appliance that simultaneously fulfils a wide range of business needs, including big data warehousing, planning and optimization, and predictive analysis. Three parameters determine the processing time of reporting queries and the degree of computing resource consumption in SAP HANA: the complexity of the calculations, the data volume, and the number of users requiring access to this data.

Reporting based on simple calculations utilizes very little processing power and memory resources, even if it involves a large number of users or large amounts of data. Under such conditions, SAP HANA enables real-time data access, efficient data storage, and fast reporting.

High-load analytics in SAP HANA

Reporting, which is based on very complex calculations, requires significant hardware resources to process large amounts of data and to provide the results to a large group of users in real-time. Such cases are referred to as "high-load analytics."

To identify cases of high-load analytics we utilize SAP HANA diagnostics on the main parameters of usage effectiveness, such as CPU/ RAM utilization, throughput, and processing time.



Process complexity



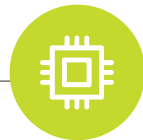
Parallel user requests



Big data



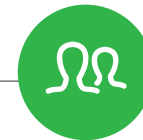
Diagnostics of SAP HANA usage



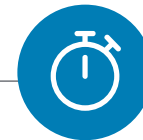
More efficient usage of existing processor and memory resources



Significant reduction of SAP HANA total cost of ownership



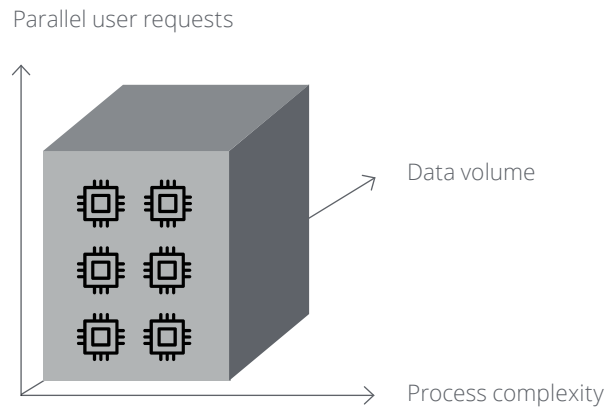
Handling more parallel user requests with constant processing time



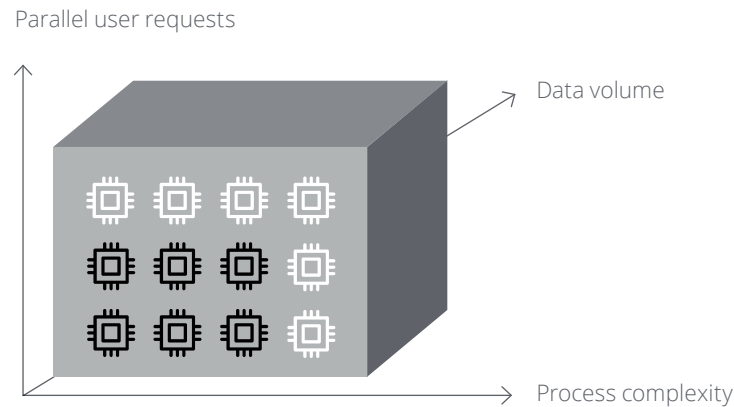
Acceleration of data processing and reporting

“As SAP HANA system resources start reaching capacity limits, realtime data processing begins to start taking its toll.”

Full use of SAP HANA system capacity



Scale-out/scale-up scenario



Performance challenges of IT systems one example of SAP HANA

Working closely with customers, we have seen that even well-sized and designed SAP HANA solutions result in a slow-running SAP HANA system with increased memory and CPU consumption owing to the demands of business coupled with an ever-growing data footprint.

As SAP HANA system resources start reaching capacity limits, real-time data processing begins to start taking its toll, and business users are negatively impacted as they begin to see degraded system performance. Suddenly, much-vaunted sub-second query performance and response time start to appear as a distant memory.

SAP HANA scale-up and scale-out

To keep the system performance on a stable level and response times within the scope of real-time delivery, SAP HANA system owners are usually left with two options:

- **Scale-out** (i.e. adding more servers to the system) and

- **Scale-up** (i.e. adding additional CPU or RAM to the existing server).

Both solutions are costly.

“In-Time leads to a significant reduction in resource consumption and reveals the true potential of existing hardware in high-load analytic scenarios. It has an undeniably positive impact on SAP HANA total costs of ownership.”

Our solution: Deloitte In-Time

With In-Time, Deloitte offers a cost-saving alternative to system scale-out or scale-up for high-load analytic applications. The solution is based on parallel pre-calculations and updates so that the data age does not exceed the defined SLA. The semantic partitions for pre-calculation and update are chosen dynamically in accordance to the optimal usage of existing system resources. In this way, In-Time ensures a stable and reliable SAP HANA performance level and simultaneously optimizes high-load analytic applications through a reduction of processor and memory resource consumption.

In-Time leads to a significant reduction in resource consumption and reveals the true

potential of existing hardware in high-load analytic scenarios. It has an undeniably positive impact on SAP HANA total costs of ownership.

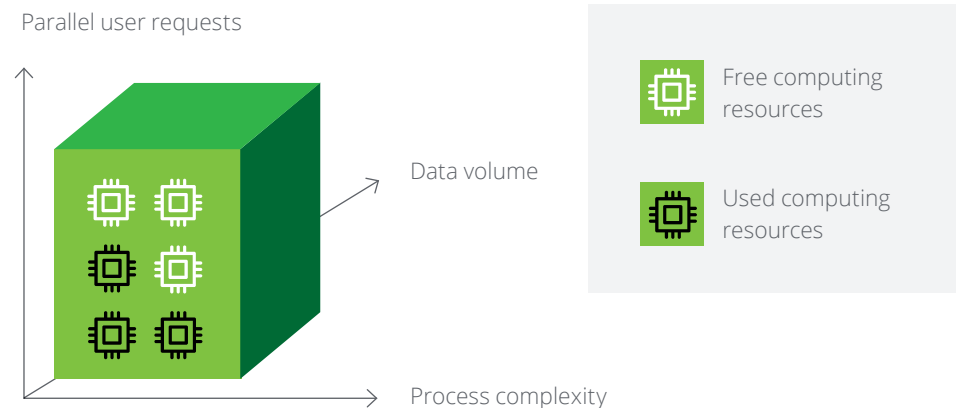
Software components include

- The In-Time server, which manages pre-calculations and maintains an optimal load on the SAP HANA server
- The In-Time Workbench, which includes the Administration Console, Application Manager, and System Explorer to configure, monitor, and customize In-Time applications

The Deloitte In-Time supports such SAP HANA functionalities as multi-tenant databases, smart data access, workload classes, and history tables.

Deloitte In-Time solution

For an optimized usage of available CPU and RAM resources

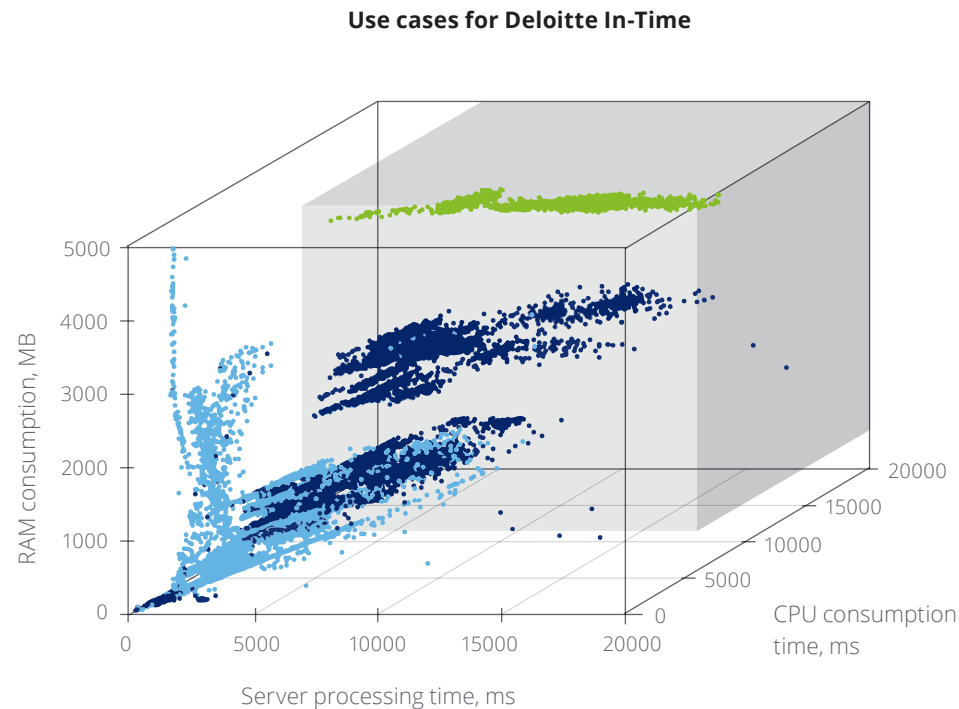


“The Deloitte In-Time solution for SAP HANA is beneficial in a very broad range of use cases.”

Use cases for the In-Time add-on

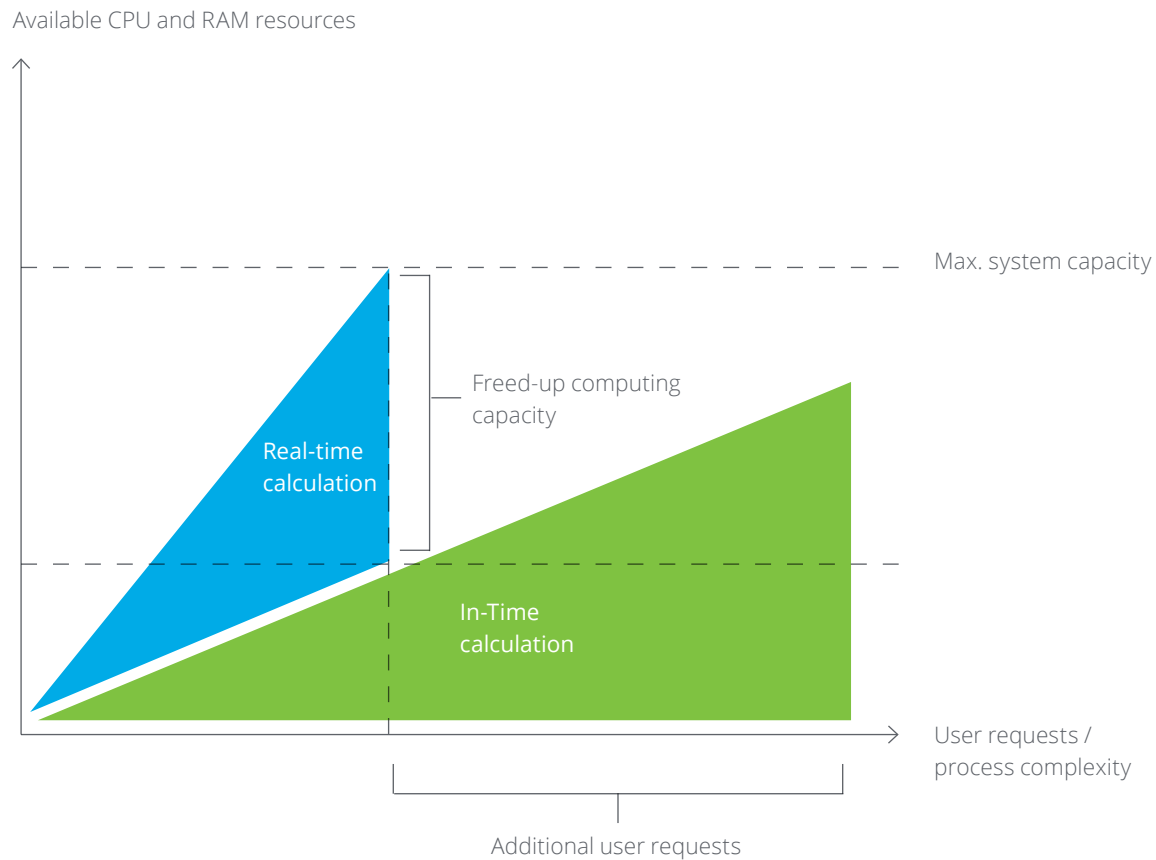
- The Deloitte In-Time solution for SAP HANA is beneficial in a very broad range of use cases
- The optimization potential for a customer application is analyzed based on
 - RAM consumption by the application
 - Server processing time
 - CPU utilization
 - Frequency of querying
- The performance of those applications which sporadically or constantly cause high loads in the system can be optimized by Deloitte In-Time

Whether In-Time is applicable for a specific client situation is assessed prior to the implementation. For example, applications 2 and 3 from the picture can be optimized.



“With In-Time, response times remain constant and data processing times get shorter.”

Comparison between real-time and In-Time calculations



In-Time facts and figures

The In-Time methodology and its adaptation to business requirements as well as the In-Time software toolkits can reduce the **SAP HANA total cost of ownership by up to 60%**.

Our experience has shown that the resource and energy consumption of SAP HANA systems that are optimized with In-Time solution is **up to 70% lower than without the In-Time solution**. Accordingly, In-Time is not only cost-efficient but also environmentally sustainable.

With In-Time, **response times remain constant and data processing times get shorter**. Concurrently, SAP HANA hardware capacities are set free and can therefore be used by other applications.

Let's talk

Peter Ratzler
Partner, Technology, Deloitte
Consulting LLP
Email: pratzer@deloitte.de

Alex Gruener
Senior Manager, Technology Strategy
and Architecture (TS&A), Deloitte
Consulting LLP
Email: agruener@deloitte.de
🐦 @InTime4SAPHANA

Chris Dinkel
Director, Deloitte Consulting LLP
Email: cdinkel@deloitte.com
🐦 @chris_dinkel

Deven Joshi
Senior Manager, Deloitte Services LP
Email: devenjoshi@deloitte.com

Deloitte.

Deloitte refers to one or more of Deloitte Touche Tohmatsu Limited, a UK private company limited by guarantee ("DTTL"), its network of member firms, and their related entities. DTTL and each of its member firms are legally separate and independent entities. DTTL (also referred to as "Deloitte Global") does not provide services to clients. Please see www.deloitte.com/de/UeberUns for a more detailed description of DTTL and its member firms.

Deloitte provides audit, risk advisory, tax, financial advisory and consulting services to public and private clients spanning multiple industries; legal advisory services in Germany are provided by Deloitte Legal. With a globally connected network of member firms in more than 150 countries, Deloitte brings world-class capabilities and high-quality service to clients, delivering the insights they need to address their most complex business challenges. Deloitte's more than 244,000 professionals are committed to making an impact that matters.

This communication contains general information only; it is not suitable for addressing the particular circumstances of any individual case and is not intended to be used as a basis for commercial decisions or decisions of any other kind. None of Deloitte Consulting GmbH or Deloitte Touche Tohmatsu Limited, its member firms, or their related entities (collectively, the "Deloitte network") is, by means of this communication, rendering professional advice or services. No entity in the Deloitte network shall be responsible for any loss whatsoever sustained by any person who relies on this communication.

Copyright © 2017 Deloitte Development LLC. All rights reserved.
Member of Deloitte Touche Tohmatsu Limited

Deloitte + SAP

www.deloitte.com/SAP

SAP@deloitte.com

🐦 @DeloitteSAP