

Deloitte.



#DeloitteInnovation: In-Time
Uncover the Potential of SAP HANA®

In-Time Deloitte™

Deloitte In-Time in a Nutshell

In-Time is the first and only SAP HANA optimization add-on that can analyze the effectiveness of SAP HANA usage and help optimize it. The optimization occurs according to business needs for **data freshness**.

As In-Time finds the right balance between consumption of computing resources and data freshness, **the need for further investments into scale-up or scale-out decreases or disappears at all** and the customer stays satisfied with the processing and response times.



Process complexity



Parallel user requests



Big Data

Client Benefits



Enhanced insights into SAP HANA usage



TCO reduction of SAP HANA over the application lifecycle

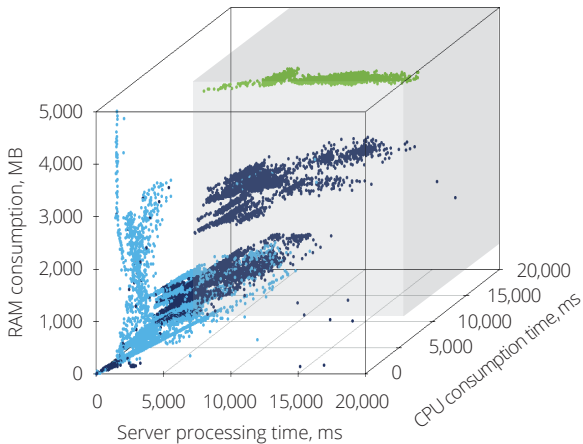


Fast response times of optimized SAP HANA applications

Use Cases for Deloitte In-Time

The In-Time add-on is beneficial to SAP HANA applications referred to high-load analytics. These are the cases where reporting is based on very **complex calculations** and is **frequently queried**. Thus, data processing requires **significant hardware resources**, especially if the results have to be there as quickly as possible.

Owing to high-load analytics applications, the users start to be unsatisfied with SAP HANA performance and response times.



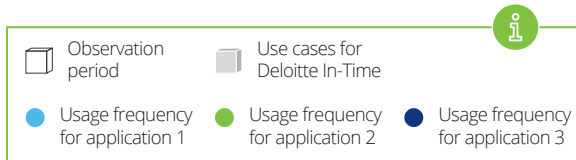
Advanced Diagnostics of SAP HANA

To visualize and monitor the SAP HANA usage, the In-Time comes with the Advanced Diagnostics feature. This feature allows you not only understand what is going on inside SAP HANA, but also identify those applications which can be optimized with the In-Time methodology.

The SAP HANA Advanced Diagnostics traces the following parameters for each applications:

- RAM consumption
- Server processing time
- CPU utilization
- Frequency of querying

The performance of those application which sporadically or constantly cause high loads in the system can be sustainably optimized by Deloitte In-Time.



Our Solution: Deloitte In-Time

In-Time methodology

The solution is based on parallel pre-calculation and update so that the data age does not exceed the defined value. The semantic partitions for pre-calculation and update are chosen dynamically in accordance to the optimal usage of existing system resources. In this way, In-Time ensures a **stable and reliable SAP HANA performance level** and simultaneously optimizes high-load analytic applications through a **reduction of processor and memory resource consumption**.

With In-Time, Deloitte offers a cost-saving alternative to system scale-out or scale-up for high-load analytic applications

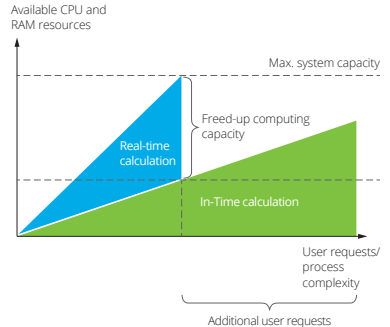
Software components:

- **In-Time server** which manages pre-calculations and maintains an optimal load on the SAP HANA server
- **In-Time Workbench** which includes the Administration Console, Application Manager and System Explorer to configure, monitor and customize In-Time applications

Installation features:

- Deloitte In-Time can be **fully integrated** into SAP HANA Platform or run on a separate server
- The In-Time add-on can be installed **on premise or in SAP HANA Enterprise Cloud**
- It supports **all** SAP HANA 1.0 and SAP HANA 2.0 versions (SAP S/4 HANA, SAP BW/4 HANA or SAP HANA Native)
- In-Time supports such SAP HANA functionalities as multi-tenant databases, smart data access and workload classes

Comparison between real-time and In-Time calculations

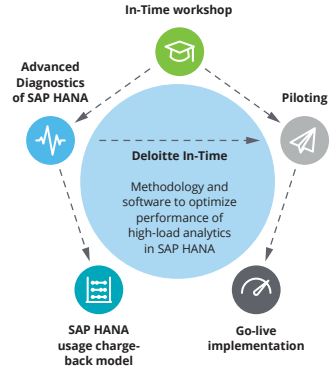


Our Services:

- **In-Time workshop** includes training materials and training sessions adjusted to the target group and elaboration of use cases
- **The Diagnostics tool** helps SAP HANA administrators get insights of what is happening in the system
- With the **charge-back model**, IT can invoice businesses for SAP HANA usage
- The duration of **piloting** depends on the size of SAP HANA system and complexity of native applications
- To **go live**, we provide the In-Time license and support

Facts and Figures:

- The In-Time add-on can reduce the **SAP HANA total cost of ownership by up to 60 %**
- With In-Time, **response time remains constant**
- The In-Time add-on helps **high-load analytics applications save up to 80 % of SAP HANA hardware capacities**
- The application „Deloitte In-Time for Profit Contribution Report“ was certified by SAP®





Contacts

Peter Ratzer

Partner | Technology
pratzer@deloitte.de

Gislar Ickas

Partner | Information Management
giickas@deloitte.de

Alex Gruener

Senior Manager | Technology Strategy and Architecture (TS&A)
agruener@deloitte.de

Chris Dinkel

Director | Deloitte Consulting LLP
cdinkel@deloitte.com

Deven Joshi

Tax Senior Manager | Deloitte Tax LLP
devenjoshi@deloitte.com

For further information, please visit our website <http://www.deloitte.com/de/in-time>

Deloitte refers to one or more of Deloitte Touche Tohmatsu Limited, a UK private company limited by guarantee ("DTTL"), its network of member firms, and their related entities. DTTL and each of its member firms are legally separate and independent entities. DTTL (also referred to as "Deloitte Global") does not provide services to clients. Please see www.deloitte.com/de/UeberUns for a more detailed description of DTTL and its member firms.

Deloitte provides audit, risk advisory, tax, financial advisory and consulting services to public and private clients spanning multiple industries; legal advisory services in Germany are provided by Deloitte Legal. With a globally connected network of member firms in more than 150 countries, Deloitte brings world-class capabilities and high-quality service to clients, delivering the insights they need to address their most complex business challenges. Deloitte's more than 244,000 professionals are committed to making an impact that matters.

This communication contains general information only not suitable for addressing the particular circumstances of any individual case and is not intended to be used as a basis for commercial decisions or decisions of any other kind. None of Deloitte Consulting GmbH or Deloitte Touche Tohmatsu Limited, its member firms, or their related entities (collectively, the "Deloitte network") is, by means of this communication, rendering professional advice or services. No entity in the Deloitte network shall be responsible for any loss whatsoever sustained by any person who relies on this communication.