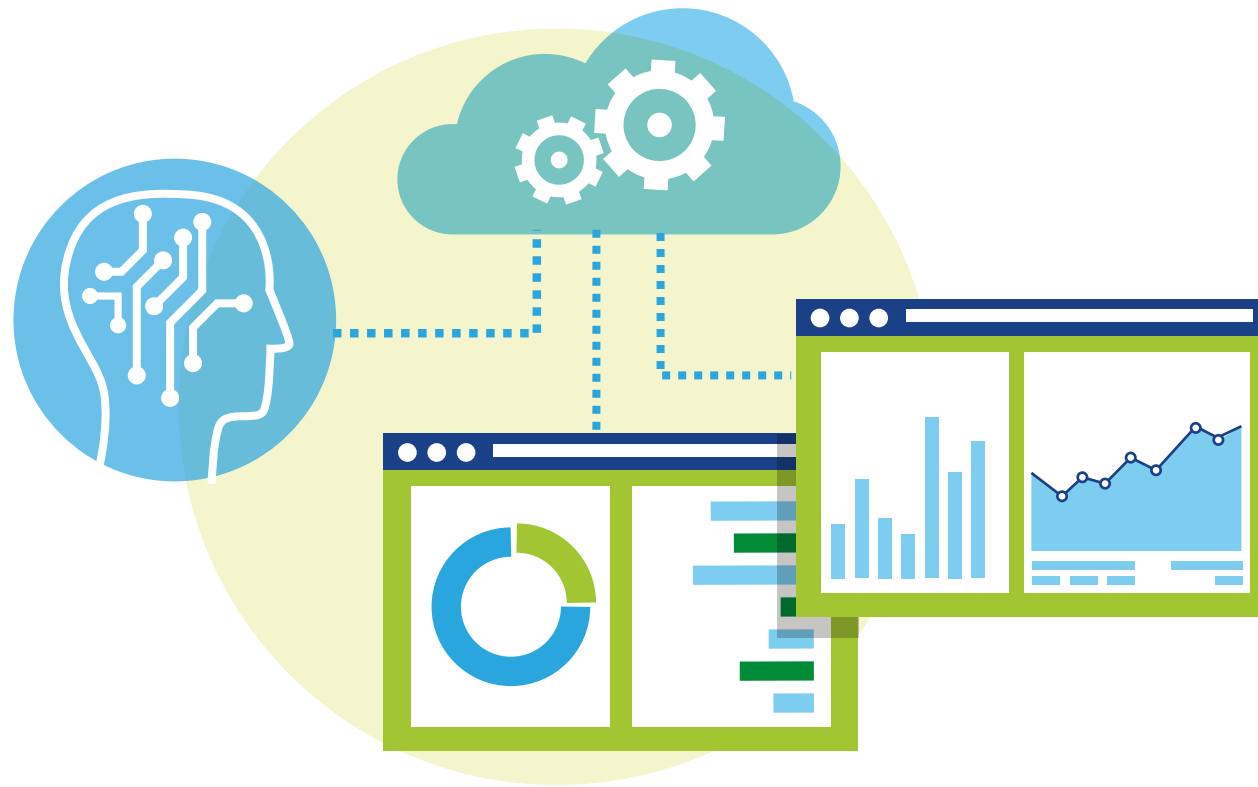


# Cognitive technologies enhance enterprise software



Deloitte Global predicts that by end-2016

*more than 80 of the world's 100 largest enterprise software companies*

by revenues will have one or more integrated cognitive technologies to their products.

By:

2015

64 of the top 100

end-2016

80 of the top 100

2020

about 95% of the top 100

*...will launch products with cognitive technologies*

## *Types of cognitive technologies expected to bring benefits in 2016:*

- ✓ Machine learning
- ✓ Natural language processing
- ✓ Speech recognition
- ✓ Improving core existing functionalities
- ✓ Generate insights from data
- ✓ Automation of previously manual tasks

# Deloitte.

## #TMT*predictions*

[www.deloitte.com/TMTpredictions](http://www.deloitte.com/TMTpredictions)

© 2016. For information, contact Deloitte Touche Tohmatsu Limited. Deloitte refers to one or more of Deloitte Touche Tohmatsu Limited, a UK private company limited by guarantee ("DTTL"), its network of member firms, and their related entities. DTTL and each of its member firms are legally separate and independent entities. DTTL (also referred to as "Deloitte Global") does not provide services to clients. Please see [www.deloitte.com/about](http://www.deloitte.com/about) for a more detailed description of DTTL and its member firms. Deloitte provides audit, consulting, financial advisory, risk management, tax and related services to public and private clients spanning multiple industries. With a globally connected network of member firms in more than 150 countries, Deloitte brings world-class capabilities and high-quality service to clients, delivering the insights they need to address their most complex business challenges. Deloitte's more than 225,000 professionals are committed to making an impact that matters. This communication contains general information only, and none of Deloitte Touche Tohmatsu Limited, its member firms, or their related entities (collectively, the "Deloitte network") is, by means of this communication, rendering professional advice or services. No entity in the Deloitte network shall be responsible for any loss whatsoever sustained by any person who relies on this communication.