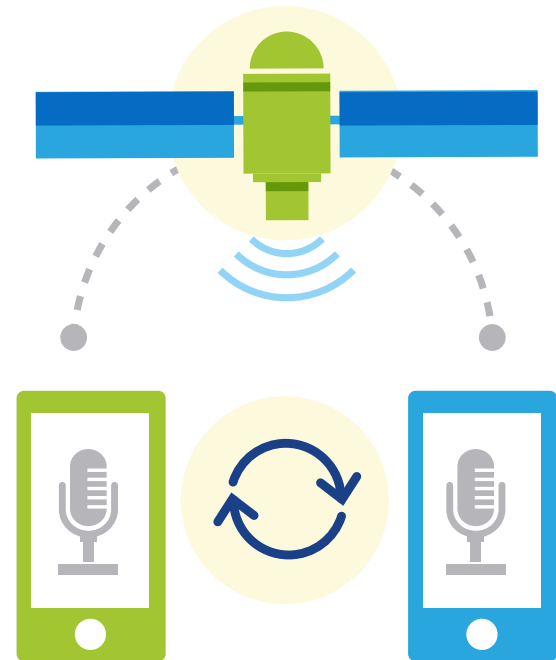
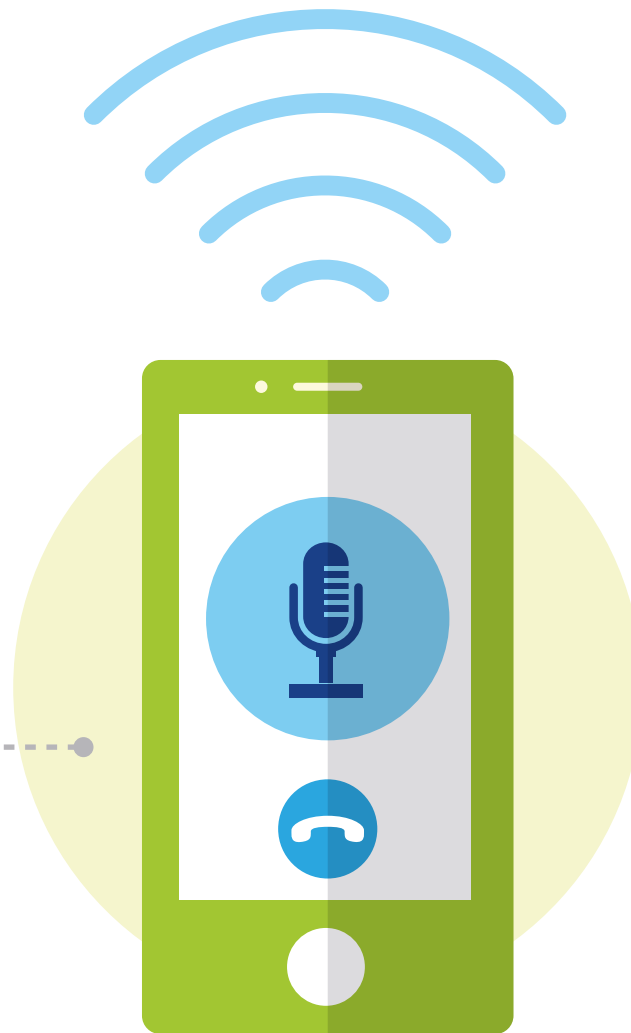


# VoLTE and VoWiFi – capacity, reach and capability

Deloitte Global predicts that about

**100** mobile operators

worldwide **will be offering at least one packet-based voice service** at the end of 2016, double the amount year-on-year, and six times higher than at the beginning of 2015.



## *What is VoLTE /VoWiFi?*

Network operator managed call using a data connection (i.e. not an app).

We estimate that approximately

**300 million**

customers **will be using VoLTE and/or VoWiFi at the end of 2016**, double the number at the start of the year and five times higher than at the beginning of 2015.

**Deloitte.**

[www.deloitte.com/TMTpredictions](http://www.deloitte.com/TMTpredictions)

**#TMT** *predictions*

© 2016. For information, contact Deloitte Touche Tohmatsu Limited. Deloitte refers to one or more of Deloitte Touche Tohmatsu Limited, a UK private company limited by guarantee (“DTTL”), its network of member firms, and their related entities. DTTL and each of its member firms are legally separate and independent entities. DTTL (also referred to as “Deloitte Global”) does not provide services to clients. Please see [www.deloitte.com/about](http://www.deloitte.com/about) for a more detailed description of DTTL and its member firms. Deloitte provides audit, consulting, financial advisory, risk management, tax and related services to public and private clients spanning multiple industries. With a globally connected network of member firms in more than 150 countries, Deloitte brings world-class capabilities and high-quality service to clients, delivering the insights they need to address their most complex business challenges. Deloitte’s more than 225,000 professionals are committed to making an impact that matters. This communication contains general information only, and none of Deloitte Touche Tohmatsu Limited, its member firms, or their related entities (collectively, the “Deloitte network”) is, by means of this communication, rendering professional advice or services. No entity in the Deloitte network shall be responsible for any loss whatsoever sustained by any person who relies on this communication.