

# Deloitte.



## Power BI Desktop: Interactive Reports with Visual Analytics

**Date:**

Wednesday - Thursday,  
25-26 July 2018

**Time:**

9.00 AM-5.30 PM  
(registration starts at 8.30 AM)

**Venue:**

Grand Hyatt Jakarta  
Jalan M.H. Thamrin Kav 28-30  
Jakarta Pusat 10350

**Investment Fee**

IDR 9,900,000 (inclusive of VAT)  
Send 4 delegates & the 5<sup>th</sup> comes free!

## Training Description

This 2-day training presumes that participants have little or no knowledge of Power BI Desktop. The aim is to introduce interactive data analysis using Power BI Desktop, which is downloadable for free from [powerbi.microsoft.com](http://powerbi.microsoft.com). Power BI Desktop revolutionizes the way in which data is discovered, captured, structured, and shaped so that it can be sliced and diced, chopped, queried, and presented in an interactive and intensely visual way. It provides capability to analyze and present data and to shape and deliver results easily and impressively.

As Power BI Desktop is composed of a set of interdependent BI functions, the training is broken down into sessions that correspond to the various facets of the product:

- Session 1 introduces Power BI Desktop to newcomers to the product.
- Session 2 through 5 cover data preparation using the Power BI Desktop Query Editor.
- Session 6 covers data modelling using Power BI Desktop.
- Session 7 through 9 cover DAX, the Power BI Desktop function language that we use to create metrics for BI delivery.
- Session 10 through 15 cover how to create interactive dashboards and reports.

## Training Outline

### Day 1

Wednesday, 25 July 2018

1. Introduction to Power BI Desktop
2. Discovering and Loading Data
3. Transforming Datasets
4. Data Cleansing
5. Data Mashup
6. Creating a Data Model
7. Extending the Data Model with Calculated Columns
8. Adding Measures to the Data Model

## Who should attend

- Excel users who are interested in acquiring new skills in data analysis / self-service business intelligence using Microsoft Power BI Desktop.
- Anyone who wants to transform raw data into high impact analyses and deliver efficient and practical business intelligence to their colleagues.

## Event Details

### Date:

Wednesday - Thursday, 25-26 July 2018

### Time:

9.00 AM-5.30 PM  
(registration starts at 8.30 AM)

### Venue:

Grand Hyatt Jakarta  
Jalan M.H. Thamrin Kav 28-30  
Jakarta Pusat 10350

## Investment Fee

IDR 9,900,000 (inclusive of VAT)

**Send 4 delegates & the 5<sup>th</sup> comes free!**

## In-house Training?

You can bring the above training in-house.

Please contact us at

021-5081 9839 (Avebria Cicera) or [iddttl@deloitte.com](mailto:iddttl@deloitte.com)

### Day 2

Thursday, 26 July 2018

9. Analyzing Data Over Time
10. Text-Based Visualizations
11. Charts in Power BI Desktop
12. Other Types of Visuals
13. Filtering Data
14. Using Slicers
15. Case Study – Developing a Management Dashboard

## Important Notes

Each participant needs to bring his / her own laptop with OS by Windows 10, Microsoft Office 2010 minimum and **with Microsoft Power BI Desktop installed** prior to attending this fully "hands-on" training.

Power BI Desktop **can be downloaded for free** from [powerbi.microsoft.com](http://powerbi.microsoft.com)

## Frequently Asked Questions about Power BI

Do you need to know more about Power BI? Please click the following link:

<https://powerbi.microsoft.com/en-us/documentation/powerbi-frequently-asked-questions/>

[https://www.youtube.com/watch?list=PL1N57mwBHtN0e-wvgVmrnn3Yd\\_WU7EHM-&v=cHkMfPtmfyE](https://www.youtube.com/watch?list=PL1N57mwBHtN0e-wvgVmrnn3Yd_WU7EHM-&v=cHkMfPtmfyE)

## Speaker's profile



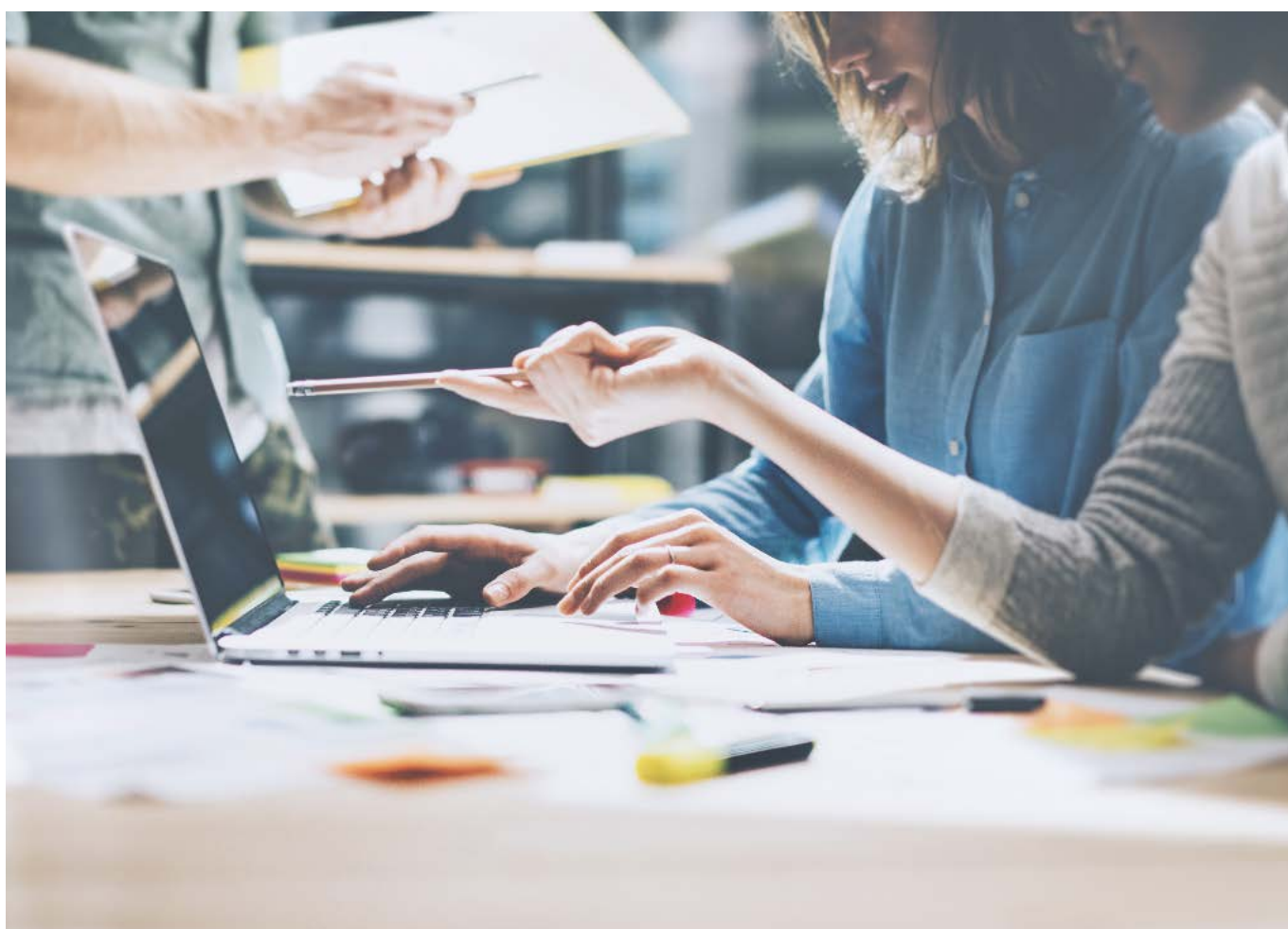
### **Purwadi Nitimidjojo**

Director  
PT Deloitte Konsultan Indonesia

Purwadi has more than 26 years of combined experience in self-service BI, financial modelling, debt restructuring, corporate banking, and leasing/ multi-finance.

He has developed self-service BI solutions for Deloitte Indonesia, designed various modelling techniques and developed various financial models for major banks and corporations.

He has delivered both public and in-house trainings on self-service BI and financial modelling to finance professionals from over 1,000 corporations in Indonesia, Singapore, Malaysia, Thailand and Cambodia for the past 12 years.



## Registration Form

# Power BI Desktop: Interactive Reports with Visual Analytics

**Date:**

Wednesday-Thursday, 25-26 July 2018

**Time:**

9.00 AM-5.30 PM (registration starts at 8.30 AM)

**Venue:**

Grand Hyatt Jakarta  
Jalan M.H. Thamrin Kav 28-30  
Jakarta Pusat 10350

### Delegate details

**Delegate 1**

Name: (Mr/Mrs/Ms) \_\_\_\_\_

Position / Department: \_\_\_\_\_

Email: \_\_\_\_\_

**Delegate 2**

Name: (Mr/Mrs/Ms) \_\_\_\_\_

Position / Department: \_\_\_\_\_

Email: \_\_\_\_\_

**Delegate 3**

Name: (Mr/Mrs/Ms) \_\_\_\_\_

Position / Department: \_\_\_\_\_

Email: \_\_\_\_\_

**Delegate 4**

Name: (Mr/Mrs/Ms) \_\_\_\_\_

Position / Department: \_\_\_\_\_

Email: \_\_\_\_\_

### Company details

Contact person: \_\_\_\_\_

Position / Departement: \_\_\_\_\_

Email: \_\_\_\_\_

Company: \_\_\_\_\_

Industry: \_\_\_\_\_

Address: \_\_\_\_\_

\_\_\_\_\_

City: \_\_\_\_\_ Postcode: \_\_\_\_\_

Telephone: \_\_\_\_\_ Fax: \_\_\_\_\_

Please transfer your participation fee to:

PT Deloitte Konsultan Indonesia  
BCA KCU Wahid Hasyim Jakarta  
Account number: 028.305.1355

Please email your redistration form, copy of NPWP  
and payment transfer receipt to:  
IDMarcomm@deloitte.com or  
fax it to: +6221 29928200/29928300

Registration and payment due date:  
**Friday, 20 July 2018**

More info:  
**Adelia Swastika**  
(021 5081 9833)

### Important notes regarding the registration:

- Please use one registration form for each participant. Photocopy of registration form is acceptable
- Invoice will be given after payment transfer
- Please return the complete attached registration form by email or fax to our Marketing Communications representative together with the transfer payment slip and scan of your company's NPWP card.
- There is no cancellation once we have received the registration form.
- Fees will not be refunded. Replacement is permissible with substitute attendees.

Deloitte refers to one or more of Deloitte Touche Tohmatsu Limited, a UK private company limited by guarantee ("DTTL"), its network of member firms, and their related entities. DTTL and each of its member firms are legally separate and independent entities. DTTL (also referred to as "Deloitte Global") does not provide services to clients. Please see [www.deloitte.com/id/about](http://www.deloitte.com/id/about) for a more detailed description of DTTL and its member firms.