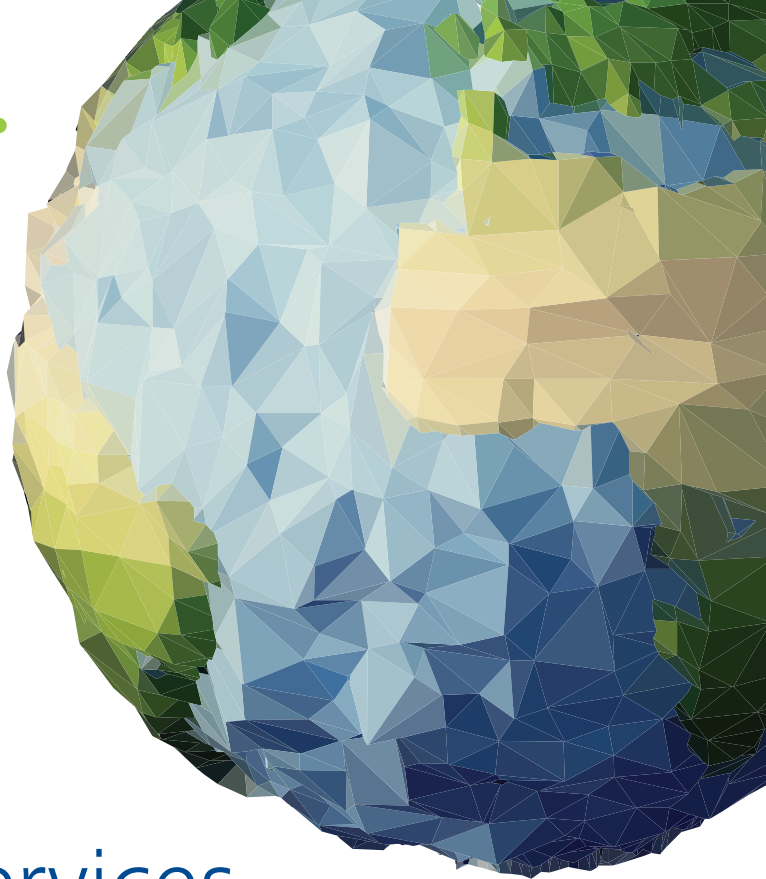


**Deloitte.**



# M&A Services

End to End solution for your  
transaction challenges

## About Deloitte M&A Services

Deloitte advises corporate buyers and sellers, as well as private equity investors throughout the entire M&A deal lifecycle. With our experience and knowledge-base, industry insights, and global capabilities, we help clients maximize value and achieve their desired business objectives.

Our global practice consists of multidisciplinary teams that possess expertise across all dimensions of M&A deals in all industries, thereby providing end-to-end solutions that meet our clients' needs holistically.

**Ultimately, our clients choose us because we offer seamless services across the entire M&A lifecycle across the globe.**

# End to End Solutions for M&A

Our M&A services cover all stages of the sell/buy transaction lifecycle

## Initial Analysis - Transaction Readiness

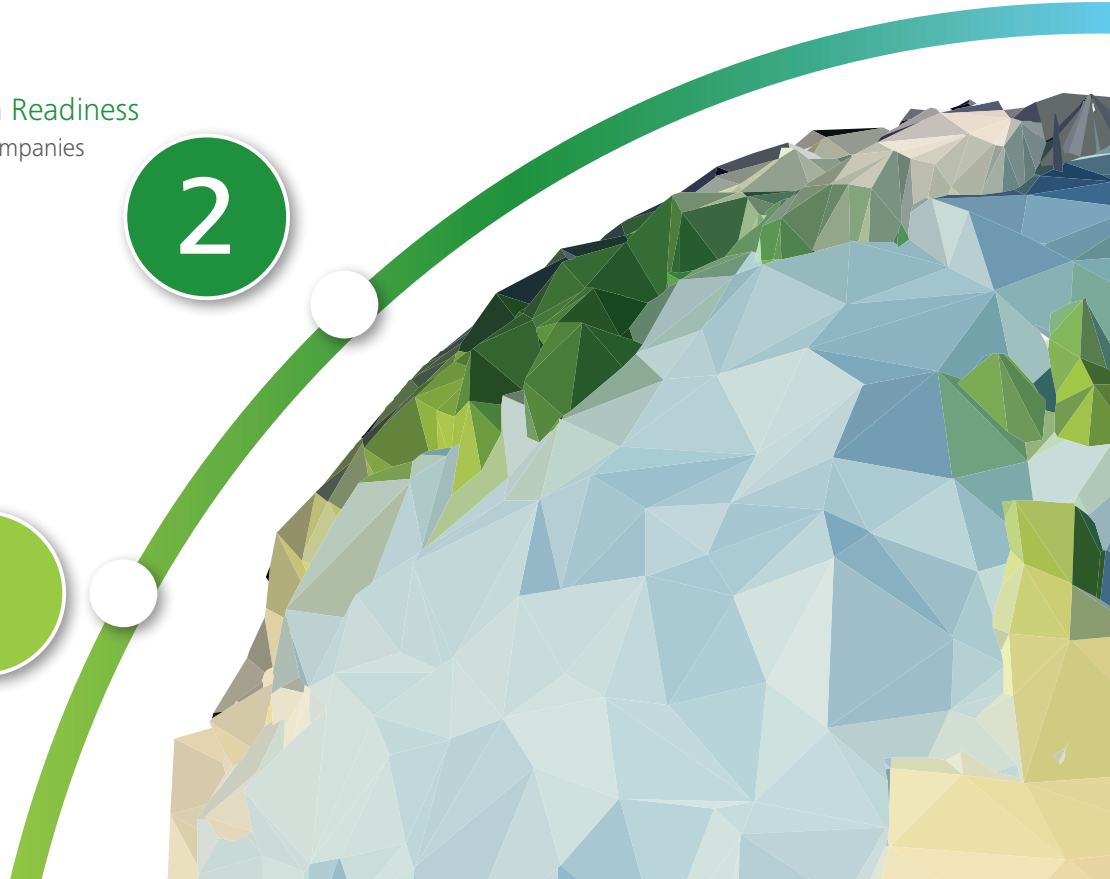
- Approaching selected target companies
- Pre-bid advisory/Diligence
- Initial Go/NoGo analysis
- Valuation
- LOI advisory
- Vendor assistance
- Deal and Tax structuring

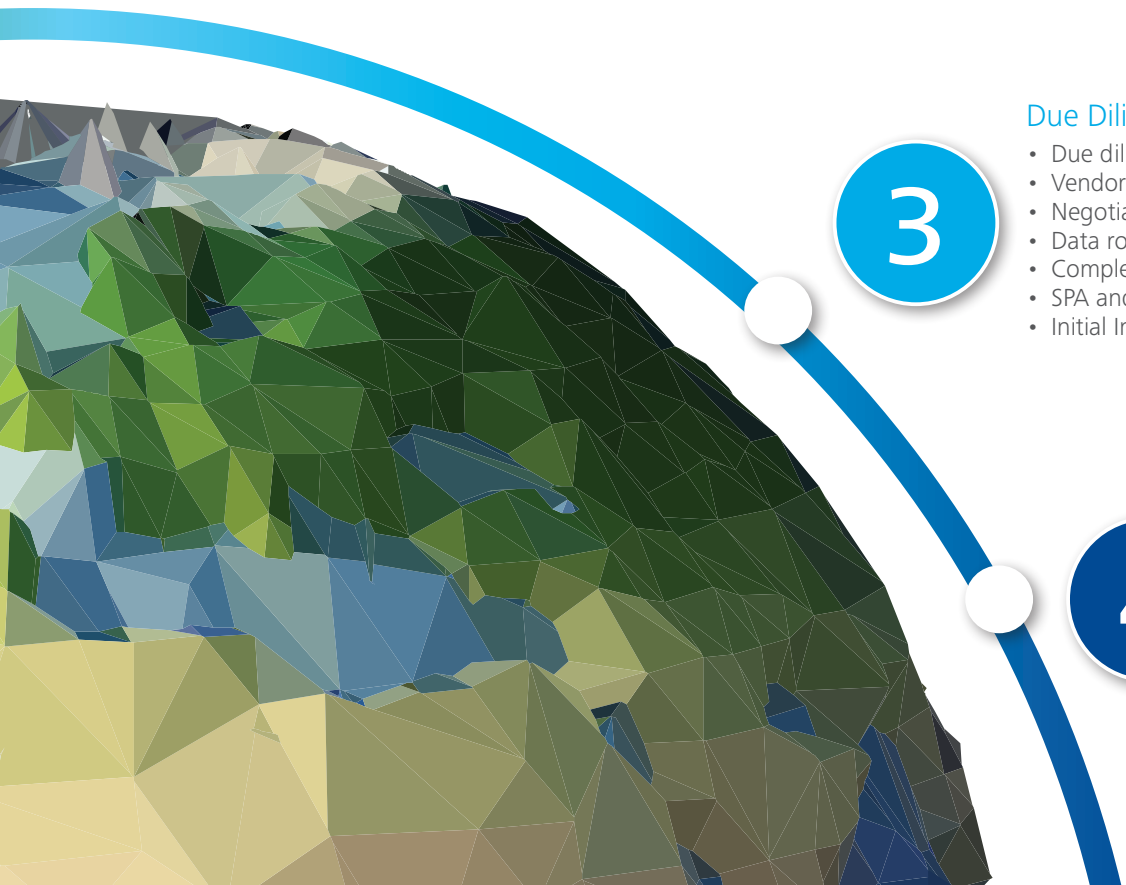
2

1

## M&A Strategy

- Portfolio strategy
- Strategic and operating model assessment
- Target screening
- Deal structuring





3

### Due Diligence & Transaction Execution

- Due diligence
- Vendor due diligence
- Negotiation support
- Data room preparation
- Completion accounts support
- SPA and TSA advisory
- Initial Integration/Separation planning

4

### Closing Integration / Separation

- Change management advisory
- Integration implementation
- PPA

## Meet Our M&A Leadership Team

### **Sigal Adania Kapun**

Partner  
Head of M&A Practice

### **Noam Gonen**

Partner  
M&A Practice Advisory Partner  
Strategy Consulting Co-Leader

### **Alona Meiron**

Partner  
Tax Group Co-Leader

### **Tal Chen**

Partner  
Corporate Finance Advisory

### **Oren Roseman**

Partner  
Strategy Consulting

### **Zohar Yami**

Director  
Operation & PMI Consulting

### **Ika Abravanel**

Deloitte Senior Advisor  
PMI

### **For more information please contact:**

Zmira Bakshi, Marketing & Business Development, Deloitte

Tel: 03-6085312 | Mobile: 054-4441465

zbakshi@deloitte.co.il

Deloitte refers to one or more of Deloitte Touche Tohmatsu Limited, a UK private company limited by guarantee ("DTTL"), its network of member firms, and their related entities. DTTL and each of its member firms are legally separate and independent entities. DTTL (also referred to as "Deloitte Global") does not provide services to clients. Please see [www.deloitte.com/about](http://www.deloitte.com/about) for a more detailed description of DTTL and its member firms.

© 2015 Brightman Almagor Zohar & Co. Member of Deloitte Touche Tohmatsu Limited.