

**Deloitte.**



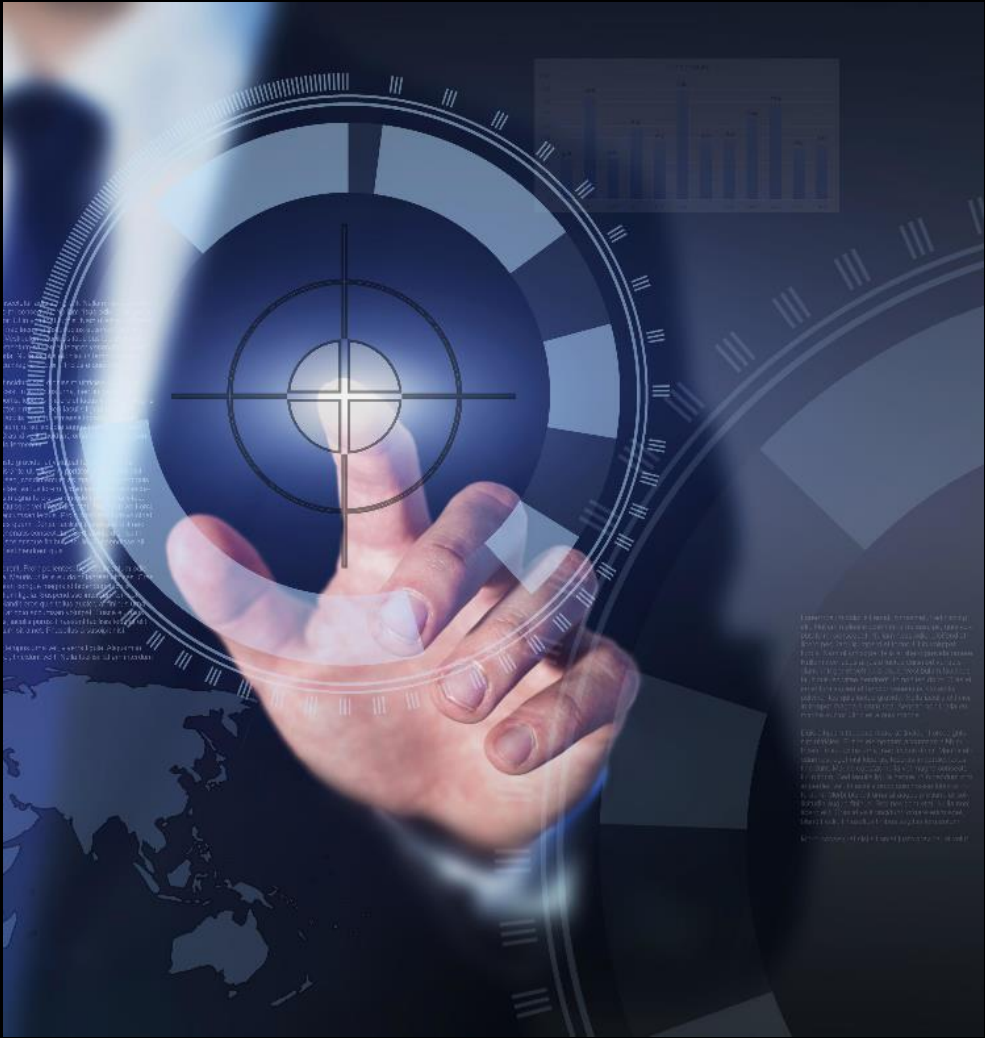
## **Deloitte Financial Crime Analytics**

**Ran Bergman**, Chief Data Scientist, Deloitte Analytics

When the   
met the  .....

**Deloitte.**

The most profitable  
business in the world...



Financial crime  
A **US\$ 2.1 trillion** problem

Tax  
evasion

Corruption

Bribery

Embezzlement

Money  
laundering

Support of illegal  
activities

Abuse





## New frontiers are creating new risks



We need to see more

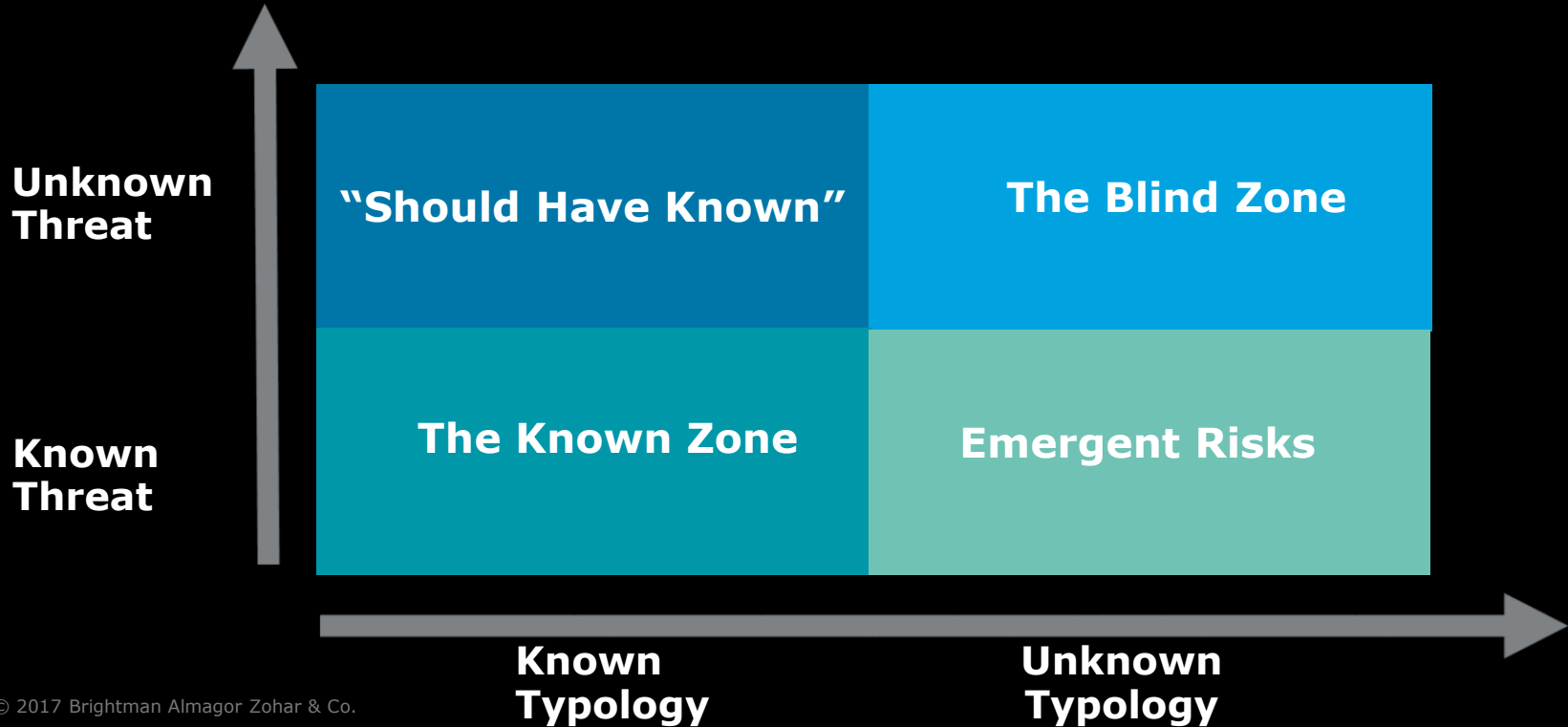


We need to increase the rate of development



We need to be smarter

## The Challenge: What we know is not enough



**Deloitte.**

**Right Typology  
Wrong Threat**





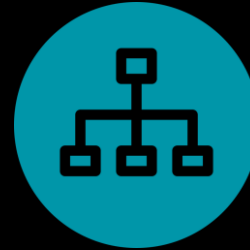
## The solution ingredients:



It's about  
technology



It's about  
Science making  
the difference



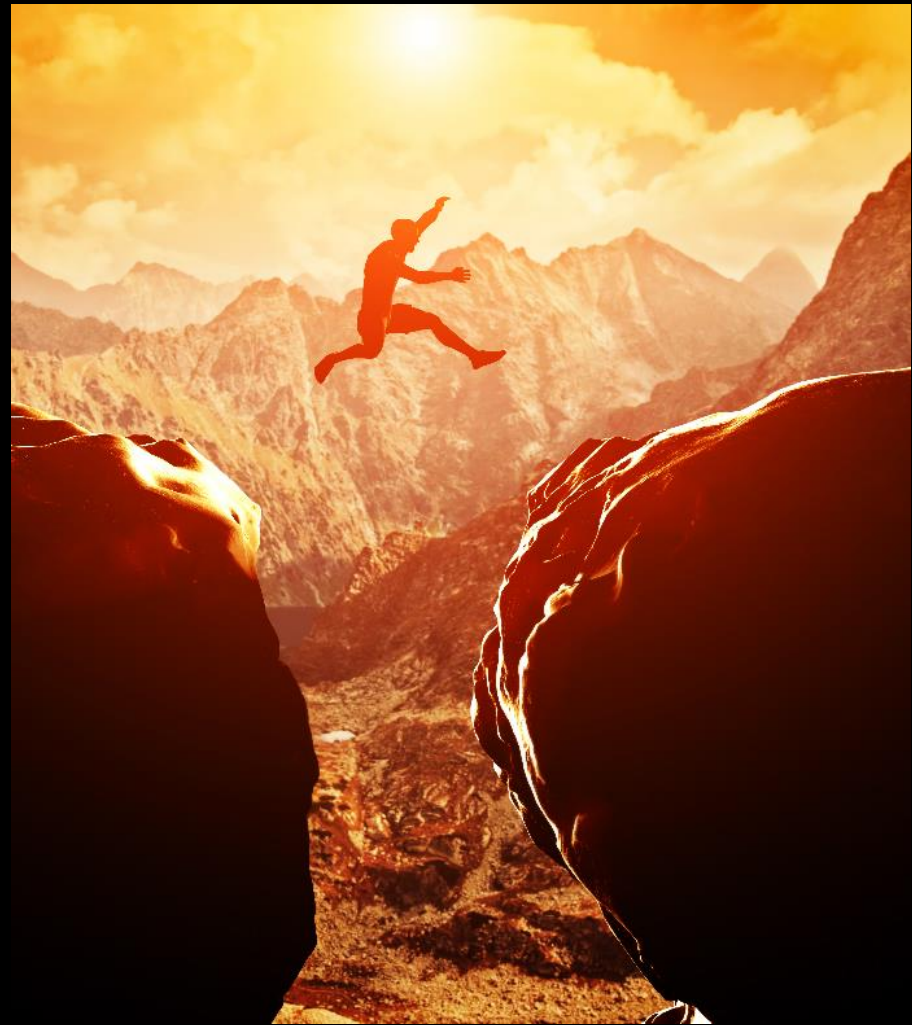
It's about  
best-practice  
to get you on a  
quick start

Anybody can create insight. But what are you going to do about it?

The best analytics initiatives start with outcomes in mind—along with a plan for realizing them.

**Deloitte.**

Deloitte Analytics & IBM  
Financial Crime Solution





# Deloitte.

## Our Solution – Platform Wise

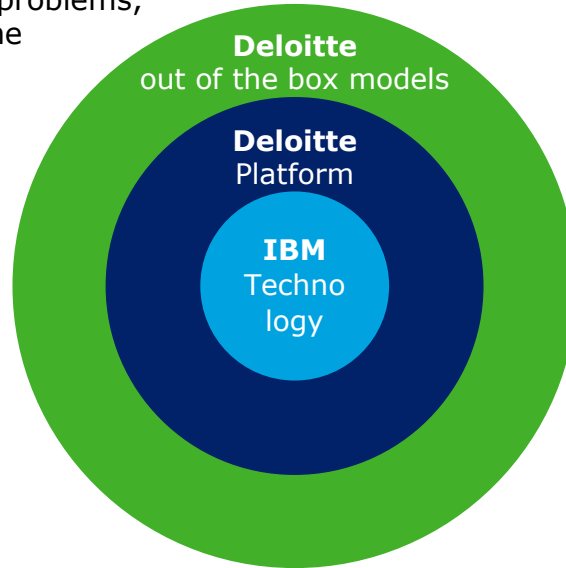
Deloitte best practice and IBM technology - New technology advances allow application of analytics to solve deeper compliance problems, particularly in Financial Crime

### Use cases:

- AML
- Compliance
- Fraud
- ...

### Platform:

- Collaboration
- Fully integration
- Decision support
- Optimization
- Monitoring



### Analytics:

- Content analytics
- Predictive analytics
- Behavioral analytics
- Networks analytics
- GeoSpatial analytics



## Deloitte.

**One Solution for All:** An analytics Platform to provide a single solution that identifies attempts at fraud, money laundering and cybercrime-related activity, address all phases of enterprise financial crime and help meet regulatory compliance obligations

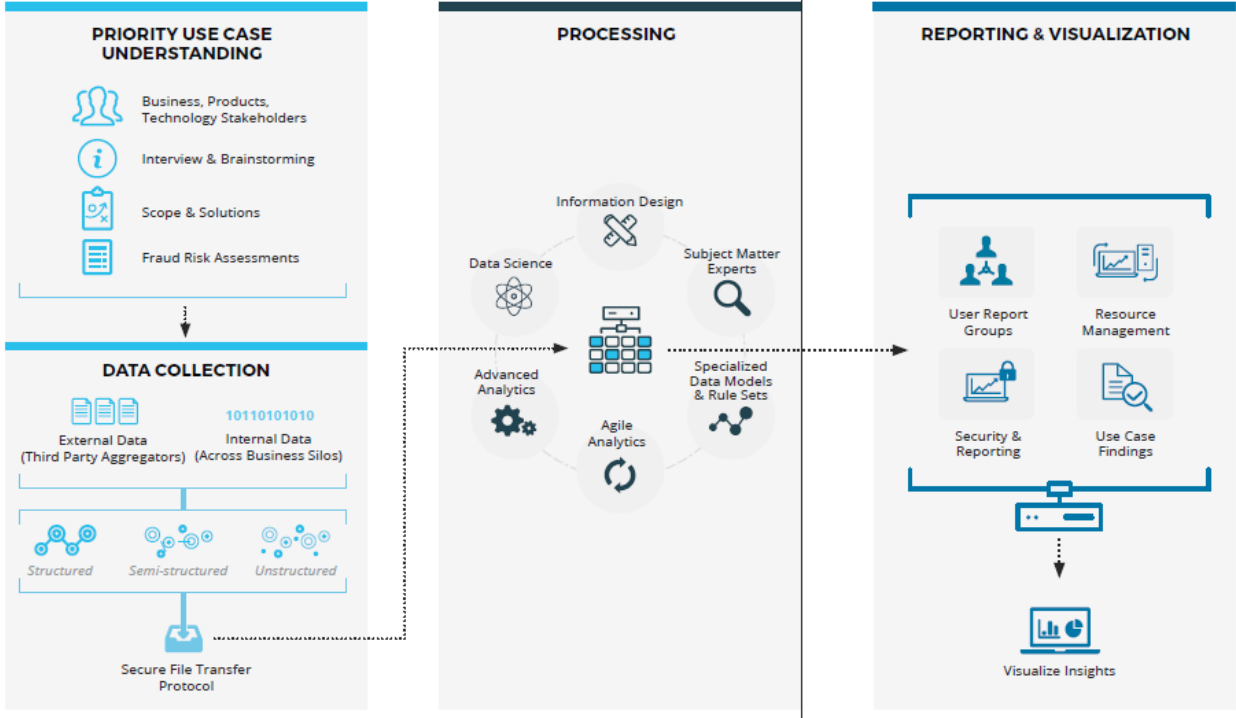


### Combination of Different Technologies:

integrate and fully leverage a modular set of analytics, intelligence and visual technologies.



# A technology platform...





...with Deloitte Global predefined best practices  
to insure an integrated, multidisciplinary approach to target the emerging threats

## Understanding Operations

---

Enable major process improvement initiative via analytics, by ensuring deep procedural and technical understanding, and identifying major savings potential

## Applying Analytics Solution

---

Gather and analyze the data in order to create dynamic dashboards, and set out a solution architecture

## Measuring Performance

---

Set out desired goals, expectations and outcomes, by defining KPIs and utilizing measurement mechanisms





Deloitte refers to one or more of Deloitte Touche Tohmatsu Limited, a UK private company limited by guarantee (“DTTL”), its network of member firms, and their related entities. DTTL and each of its member firms are legally separate and independent entities. DTTL (also referred to as “Deloitte Global”) does not provide services to clients. Please see [www.deloitte.com/about](http://www.deloitte.com/about) for a more detailed description of DTTL and its member firms.

This communication is for internal distribution and use only among personnel of Deloitte Touche Tohmatsu Limited, its member firms, and their related entities (collectively, the “Deloitte network”). None of the Deloitte network shall be responsible for any loss whatsoever sustained by any person who relies on this communication.

© 2017. For information, contact Deloitte Touche Tohmatsu Limited