



Cloud Computing Risk Intelligence Map

The Cloud Computing Risk Intelligence Map™ provides a unique view on the pervasive, evolving, and interconnected nature of incremental risks associated with cloud computing that executives and managers may find useful in identifying risks that apply to their organizations.

Businesses thrive by taking risks, but falter when risk is managed ineffectively. A Risk Intelligent Enterprise™ recognizes this dual nature of risk and devotes sufficient resources both to risk taking for reward and to the protection of existing assets.

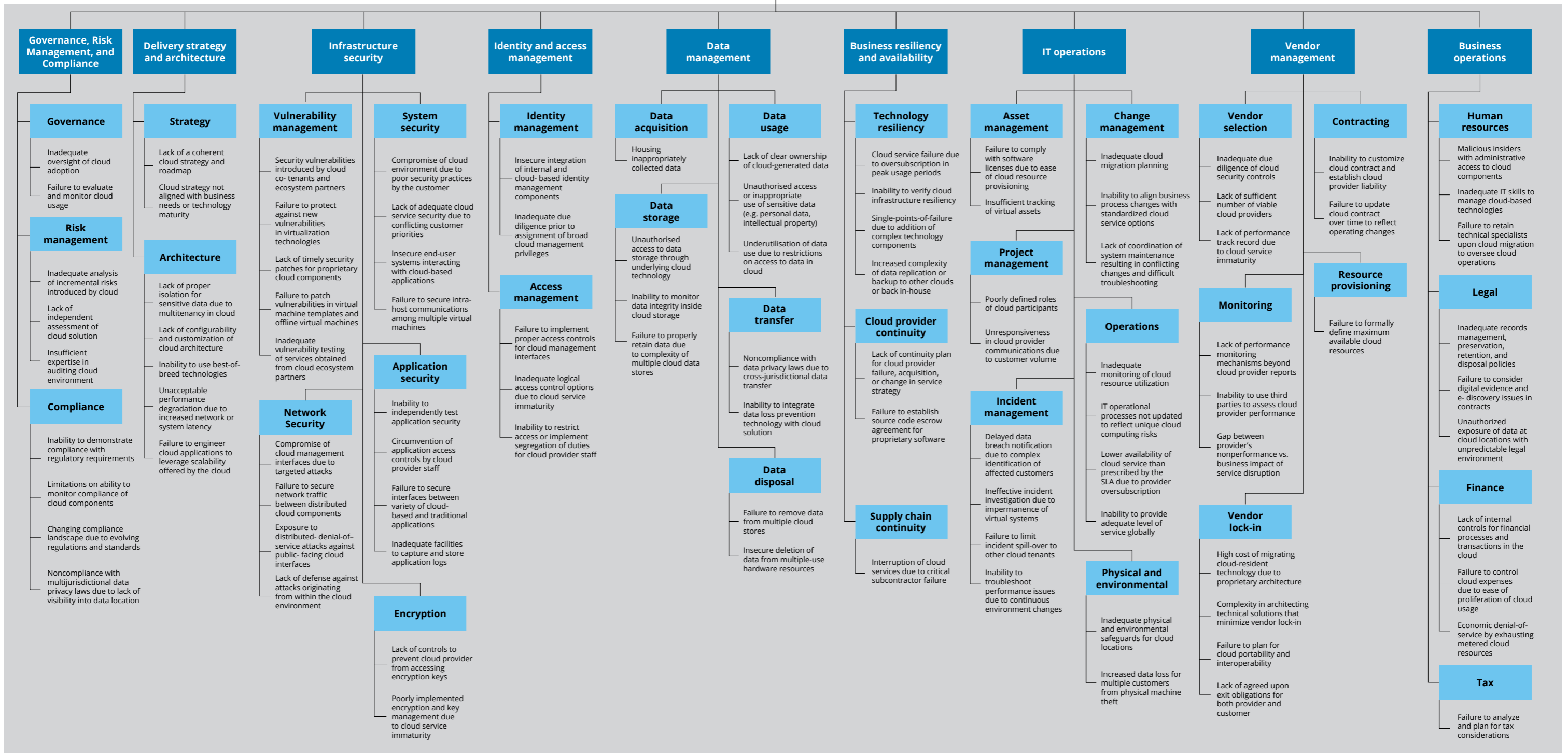
The Risk Intelligence Map is intended to serve as a guide on the journey toward Risk Intelligence by helping personnel in all functions of an organization broaden their perspective on risk and improve their ability to execute their risk-related responsibilities.

This may be accomplished by using the Risk Intelligence Map to:

- spur discussions about risk management topics, including risk identification, prioritization, measurement, and mitigation
- facilitate the connection of risk management silos
- identify redundant efforts in place to manage risk
- improve efficiency in compliance and risk management efforts
- develop risk event scenarios that require integrated responses

The Risk Intelligence Map is not a definitive or comprehensive representation of risks that may be encountered by an organization. Consider customizing the Risk Intelligence Map based on risks that impact your organization. Areas could include regulatory, geographic, industry, and company-specific issues.

For more information on customizing the Risk Intelligence Map to meet the needs of your organization, please contact your Deloitte practitioner.



Contacts

Anthony Crasto

President, Risk Advisory
Deloitte India
acrasto@deloitte.com

Abhijit Katkar

Partner, Risk Advisory
Deloitte India
akatkar@deloitte.com

Kamaljit Chawla

Leader – Cyber Operate
Risk Advisory, Deloitte India
kamaljitc@deloitte.com

Tarun Kaura

Leader – Cyber Advisory
Risk Advisory, Deloitte India
tkaura@deloitte.com

Anand Tiwari

Partner, Risk Advisory
Deloitte India
anandtiwari@deloitte.com

Anand Venkatraman

Partner, Risk Advisory
Deloitte India
anandv@deloitte.com

Manish Sehgal

Partner, Risk Advisory
Deloitte India
masehgal@deloitte.com

Muthukumar Karuppiah

Partner, Risk Advisory
Deloitte India
mkaruppiah@deloitte.com

Chintan Matalia

Partner, Risk Advisory
Deloitte India
chmatalia@deloitte.com

Deloitte refers to one or more of Deloitte Touche Tohmatsu Limited, a UK private company limited by guarantee (“DTTL”), its network of member firms, and their related entities. DTTL and each of its member firms are legally separate and independent entities. DTTL (also referred to as “Deloitte Global”) does not provide services to clients. Please see www.deloitte.com/about for a more detailed description of DTTL and its member firms.

This material is prepared by Deloitte Touche Tohmatsu India LLP (DTTILLP). This material (including any information contained in it) is intended to provide general information on a particular subject(s) and is not an exhaustive treatment of such subject(s) or a substitute to obtaining professional services or advice. This material may contain information sourced from publicly available information or other third party sources. DTTILLP does not independently verify any such sources and is not responsible for any loss whatsoever caused due to reliance placed on information sourced from such sources. None of DTTILLP, Deloitte Touche Tohmatsu Limited, its member firms, or their related entities (collectively, the “Deloitte Network”) is, by means of this material, rendering any kind of investment, legal or other professional advice or services. You should seek specific advice of the relevant professional(s) for these kind of services. This material or information is not intended to be relied upon as the sole basis for any decision which may affect you or your business. Before making any decision or taking any action that might affect your personal finances or business, you should consult a qualified professional adviser.

No entity in the Deloitte Network shall be responsible for any loss whatsoever sustained by any person or entity by reason of access to, use of or reliance on, this material. By using this material or any information contained in it, the user accepts this entire notice and terms of use.