



Corporate Real Estate Projects Advisory

Our capability



Introduction

Corporate real estate has increasingly become an essential part of business enablement for large corporates, both in India and globally. It is set to be one of the drivers of employee satisfaction and experience.



Market need

As organisations move to set up their workplace of the future, strategic design development and effective project governance become value drivers to achieve project goals.



Our solution

Corporate real estate takes up the role of a significant business enabler, and we offer bespoke services to organisations across project lifecycle covering various aspects of project such as time, cost quality, risk, safety, and approvals. Our teams also help with effective project governance and ethics, and our techno-commercial teams have the right expertise and experience to assist organisations and protect customer interests.

Our services



Project development

Project management:

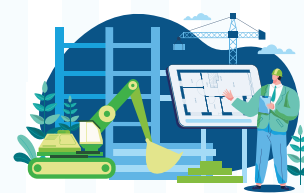
Provision of end-to-end services for corporate real estate project requirements, ranging from project conceptualisation/planning to support with commissioning/handover of facilities.

Project monitoring support:

Independent and unbiased monitoring of under-construction projects to offer greater visibility on challenges and advise on solutions.

One time project reviews:

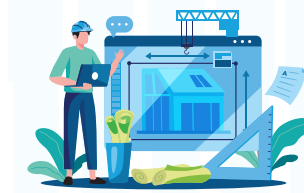
Support with greater visibility towards completed or near completed projects to gain insights and gather learnings.



Facility rationalisation

Assistance in **assessing and optimising real estate strategy including aspects such facility management, footprint analysis/rationalisation, workplace strategy, transport, EHS etc.**

Assistance in **managing changes in the real estate footprint, including decommissioning and salvaging** during facility move outs.



Design advisory

Pre-lease assessments:

- Review of facility related compliances with respect to municipal norms and National Building Code norms.
- Assessment of facilities for compliance to organisational requirements such as availability of parking, power backup, electrical connectivity etc.
- Management of the design lifecycle for build out projects

Compliance reviews:

Assessment of compliance related requirements for existing and under consideration facilities. Such assessments cover statutory aspects (such as RPWD Act, labour-related compliances amongst others) and leading industry practices with respect to Health Safety and Environment considerations.

The Deloitte difference



A dedicated team of architects, engineers, planners, accountants, management graduates with global/local experience.



Globally connected practice with access to leading trends and practices
Pan-India experience across India in corporate real estate delivery



Industry experts/advisors with experience in working with key real estate initiatives.



Senior leadership team with more than 2 decades of experience and 150+ team members in the real estate sector.



Anthony Crasto
President, Assurance
Deloitte India
acrasto@deloitte.com



Peeyush Vaish
Partner, Assurance
Deloitte India
peeyushvaish@deloitte.com



Vijay KR
Partner, Assurance
Deloitte India
vijaykr@deloitte.com



Abhijataya Kumar
Partner, Assurance
Deloitte India
abhijatayak@deloitte.com

Deloitte refers to one or more of Deloitte Touche Tohmatsu Limited ("DTTL"), its global network of member firms, and their related entities (collectively, the "Deloitte organization"). DTTL (also referred to as "Deloitte Global") and each of its member firms and related entities are legally separate and independent entities, which cannot obligate or bind each other in respect of third parties. DTTL and each DTTL member firm and related entity is liable only for its own acts and omissions, and not those of each other. DTTL does not provide services to clients. Please see www.deloitte.com/about to learn more.

Deloitte Asia Pacific Limited is a company limited by guarantee and a member firm of DTTL. Members of Deloitte Asia Pacific Limited and their related entities, each of which is a separate and independent legal entity, provide services from more than 100 cities across the region, including Auckland, Bangkok, Beijing, Bengaluru, Hanoi, Hong Kong, Jakarta, Kuala Lumpur, Manila, Melbourne, Mumbai, New Delhi, Osaka, Seoul, Shanghai, Singapore, Sydney, Taipei and Tokyo.

This communication contains general information only, and none of DTTL, its global network of member firms or their related entities is, by means of this communication, rendering professional advice or services. Before making any decision or taking any action that may affect your finances or your business, you should consult a qualified professional adviser.

No representations, warranties or undertakings (express or implied) are given as to the accuracy or completeness of the information in this communication, and none of DTTL, its member firms, related entities, employees or agents shall be liable or responsible for any loss or damage whatsoever arising directly or indirectly in connection with any person relying on this communication.

© 2024 Deloitte Touche Tohmatsu India LLP. Member of Deloitte Touche Tohmatsu Limited