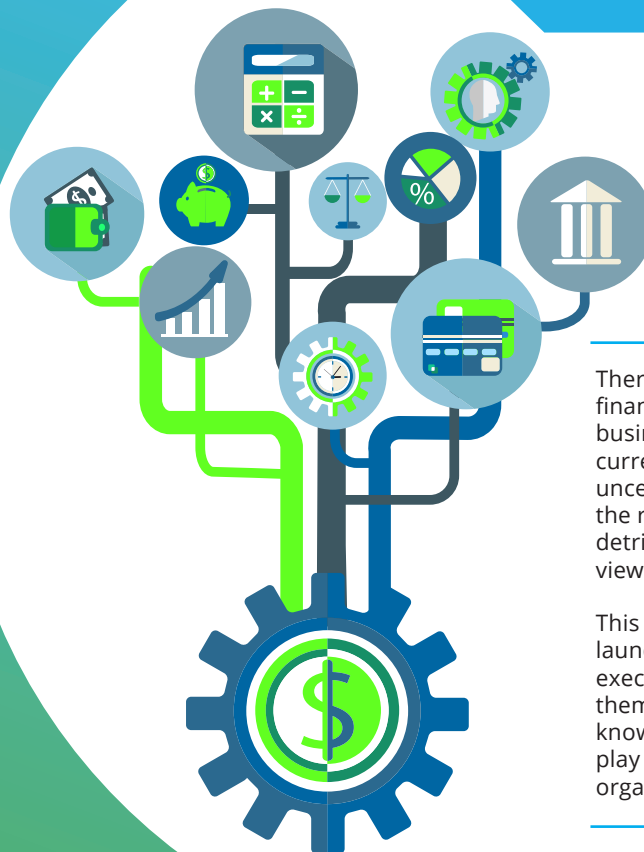


De-risk your future

Finance training for non-finance professionals

Risk Advisory now brings you courses to make you a more versatile professional.



There is a direct or indirect financial implication to every business decision. In the current environment, rife with uncertainty, not possessing the right skillsets can have a detrimental impact and be viewed as a potential risk.

This course serves as a launch pad for non-finance executives to upskill themselves with technical knowledge of finance and play an evolved part in your organisation's growth.

We bring you a career development programme designed to cater to you 'now', for your 'next'.

- 1 Course details**
 - Understand the concept of financial accounting
 - Learn how to conduct financial statement analysis
 - Comprehend cost and management accounting
 - Grasp the concepts of NPV, IRR, cash flow and capital budgeting
 - Explore project finance
- 2 Exclusive course content**
 - SAP functionality walk-throughs
 - Decision-oriented and insightful sessions
 - Usage of real-life cases and scenarios, along with simulation models.
 - Understand the implications of financial management in making strategic decisions
- 3 Faculty members**
 - Advanced finance professionals
 - Advisors with real world experience

Begin with the basics of finance, and then deep-dive into concepts that will help you evaluate business decisions

Learn from Domain Experts

This course encapsulates the experiences of our professionals, who apply their in-depth knowledge of finance to drive business decisions and create apt solutions, across the business value chain.

It enables you to move beyond textbook learning and derive insights through hands-on, easy-to-follow instructions from experienced finance professionals.

Industry knowledge

The modules adopt a comprehensive approach and are fueled by our deep industry knowledge and broad functional experience.

We provide you with a combination of global knowledge and industry insights, reflected through all aspects of Deloitte's professional practice and teaching.

Core skill development

Hone your skills in these key areas:


- Financial statements analysis
- Business performance measurement
- Budget, financial forecasts and variance analysis
- Cost of product estimation
- Break-even analysis
- Capital budgeting proposal evaluation
- Financial model development



Contacts

Jitendra Shah

Partner

 jitendrashah@deloitte.com

Saraswat Bhattacharya

Manager

 saraswatb@deloitte.com

Manish Kumar

Director

 kumarmanish@deloitte.com



Reach out to us at inDtrainings@deloitte.com to join this training programme

Deloitte.

Deloitte refers to one or more of Deloitte Touche Tohmatsu Limited, a UK private company limited by guarantee (“DTTL”), its network of member firms, and their related entities. DTTL and each of its member firms are legally separate and independent entities. DTTL (also referred to as “Deloitte Global”) does not provide services to clients. Please see www.deloitte.com/about for a more detailed description of DTTL and its member firms.

This material is prepared by Deloitte Touche Tohmatsu India LLP (DTTILLP). This material (including any information contained in it) is intended to provide general information on a particular subject(s) and is not an exhaustive treatment of such subject(s) or a substitute to obtaining professional services or advice. This material may contain information sourced from publicly available information or other third party sources. DTTILLP does not independently verify any such sources and is not responsible for any loss whatsoever caused due to reliance placed on information sourced from such sources. None of DTTILLP, Deloitte Touche Tohmatsu Limited, its member firms, or their related entities (collectively, the “Deloitte Network”) is, by means of this material, rendering any kind of investment, legal or other professional advice or services. You should seek specific advice of the relevant professional(s) for these kind of services. This material or information is not intended to be relied upon as the sole basis for any decision which may affect you or your business. Before making any decision or taking any action that might affect your personal finances or business, you should consult a qualified professional adviser.

No entity in the Deloitte Network shall be responsible for any loss whatsoever sustained by any person or entity by reason of access to, use of or reliance on, this material. By using this material or any information contained in it, the user accepts this entire notice and terms of use.

©2020 Deloitte Touche Tohmatsu India LLP. Member of Deloitte Touche Tohmatsu Limited