



Risk Management For and By the BOT

Secured BOT Series

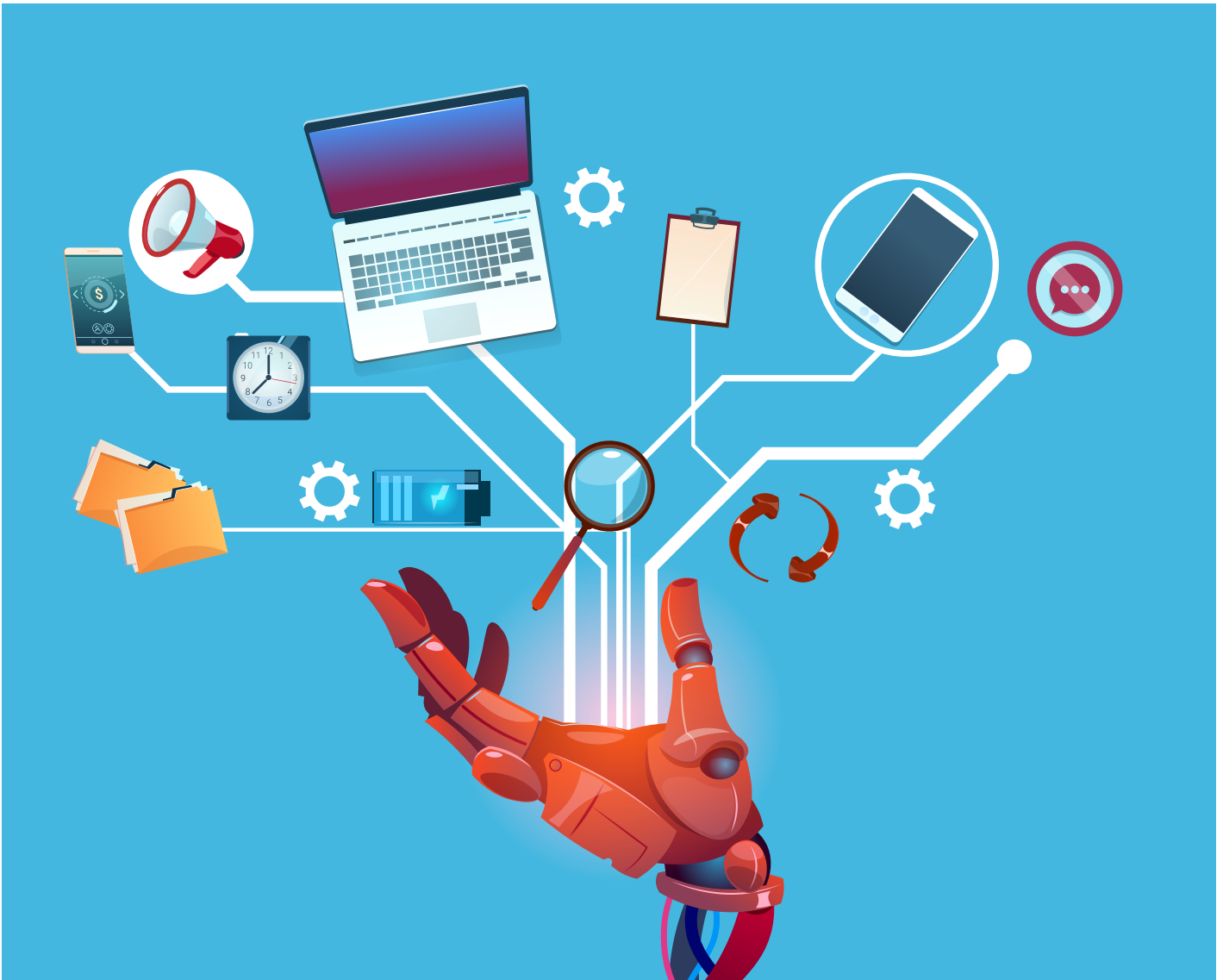
2018

Contents

- Risk Management For and By the BOT
- Setting context for RPA Risk Management
- Deloitte's Risk Framework For RPA
- Risk Management For the BOT
- Risk Management By the BOT
- How can we help?
- Contacts



Risk Management For and By the BOT



RoBOTS have sooner become a reality than most of us thought. In the current avatar, Robots are making your business more responsive, cost effective, compliant and efficient. Many of us already see these digital clicks happening around us. We are already entering an era where BOTs are doing intelligent work and building efficiencies.

While technology makes our life efficient, it also opens new risks

to the business environment. A typical Robotics Process Automation (RPA) system design provisions interconnection between multiple systems and hence also has an impact on underlying system control environment.

Lets examine its relevance to business environments.

- **Opportunity:** Can you make your digital platforms more secured and compliant through RPA?

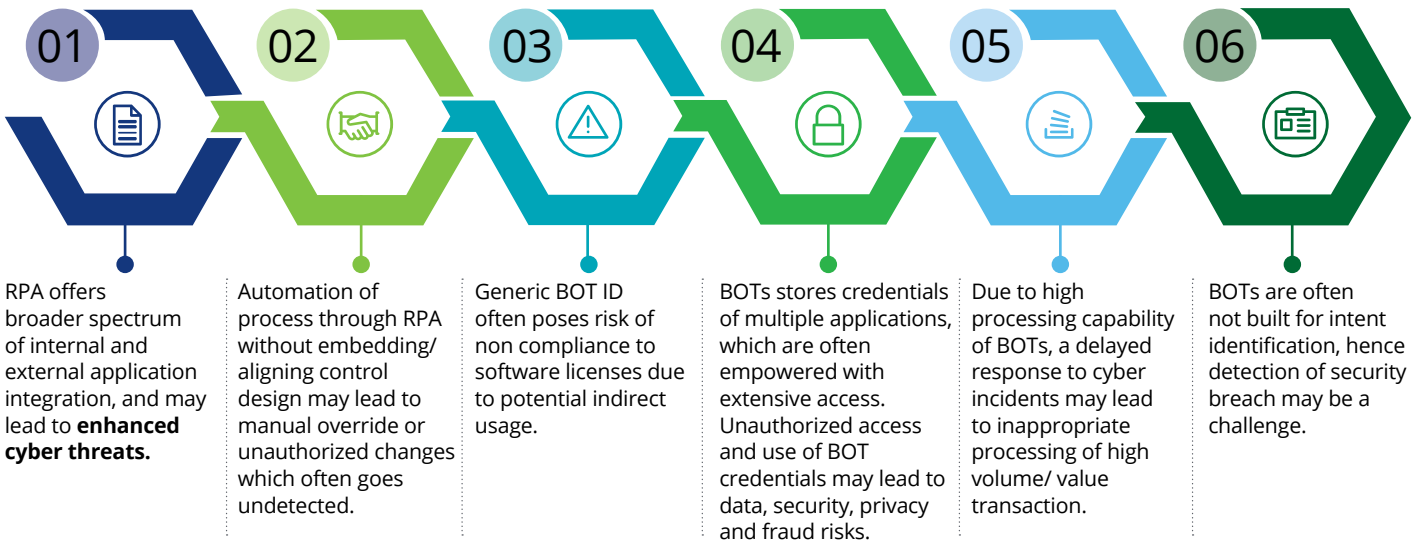
- **Threat:** How secured is your RPA environment from internal and external threats?

It is essential for an organization to build a secure BOT strategy when they move from a POC to Production environment.

Setting context for RPA Risk Management

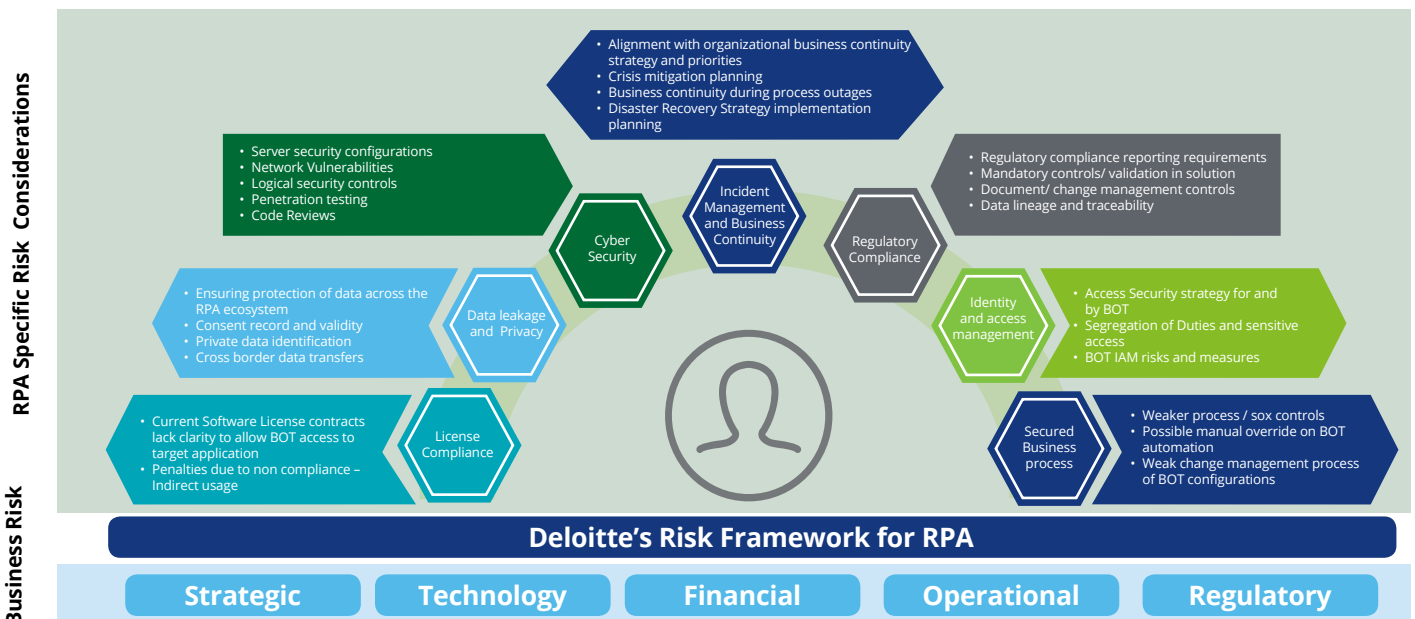
Typical risks in an RPA environment

RPA brings its own inherent risks as well the ones which are resultant of the business environment it automates.



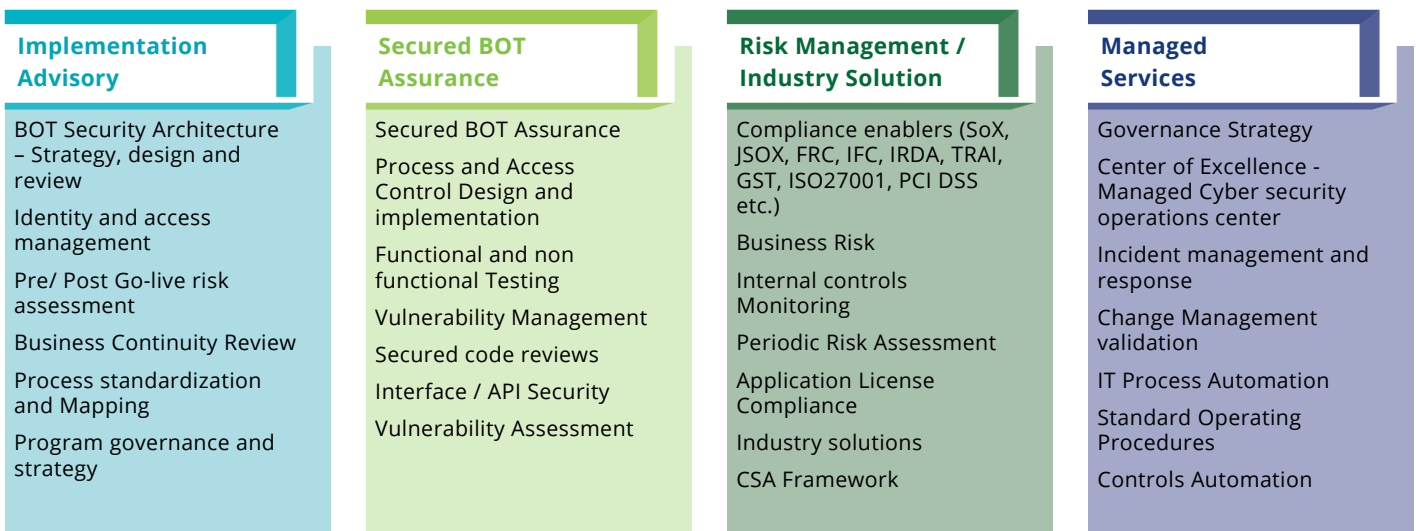
Deloitte's Risk Framework for RPA

A secured and compliant BOT environment requires an effective management and monitoring of key risk domains. Depending on the relevance, each of these domain would help strengthen security and controls in your RPA environment.



Risk Management For the BOT

A holistic risk validation of the RPA is conducted from perspective all key domains of RPA risks. Deloitte's **Secured RPA implementations and advisory services** encompasses a wide range of process and compliance needs.



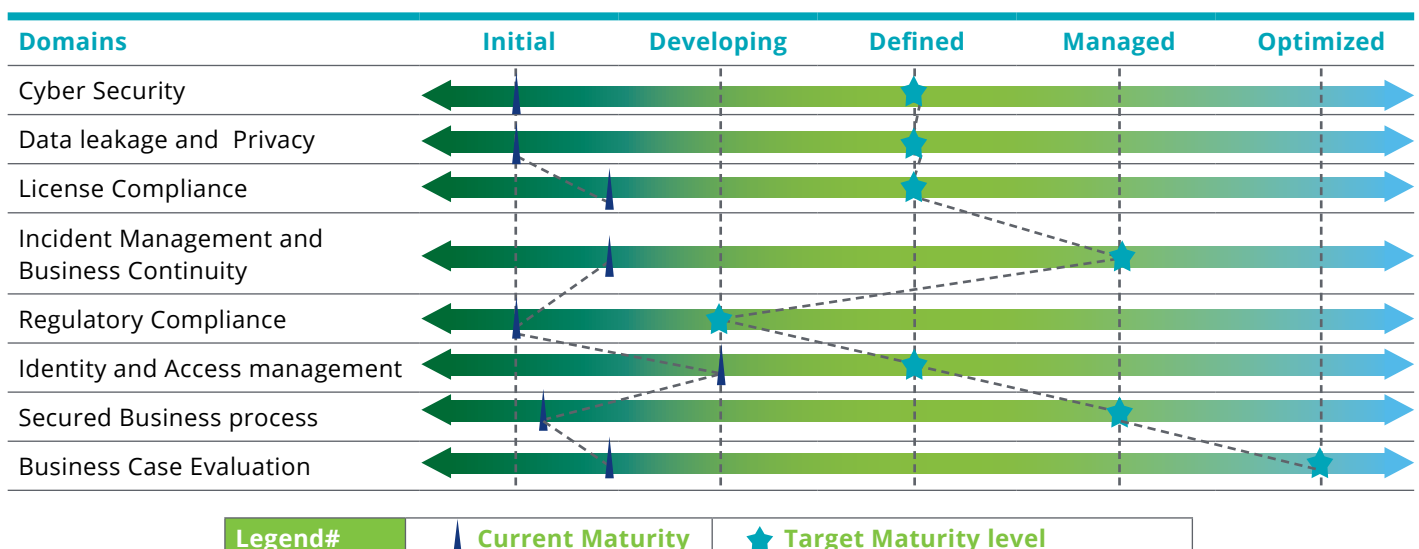
Our **Secured RPA implementations and advisory services** are designed to help you at varied stages of RPA implementation. It helps you get a comprehensive view of your RPA risks, maturity of risk management methods adopted along with desired state.

Typical value delivered includes:

- Independent and comprehensive BOT risk assessment
- Adoption of leading practices for secured and compliant BOT
- Assess the current RPA Risk maturity level and desired state

Illustrative

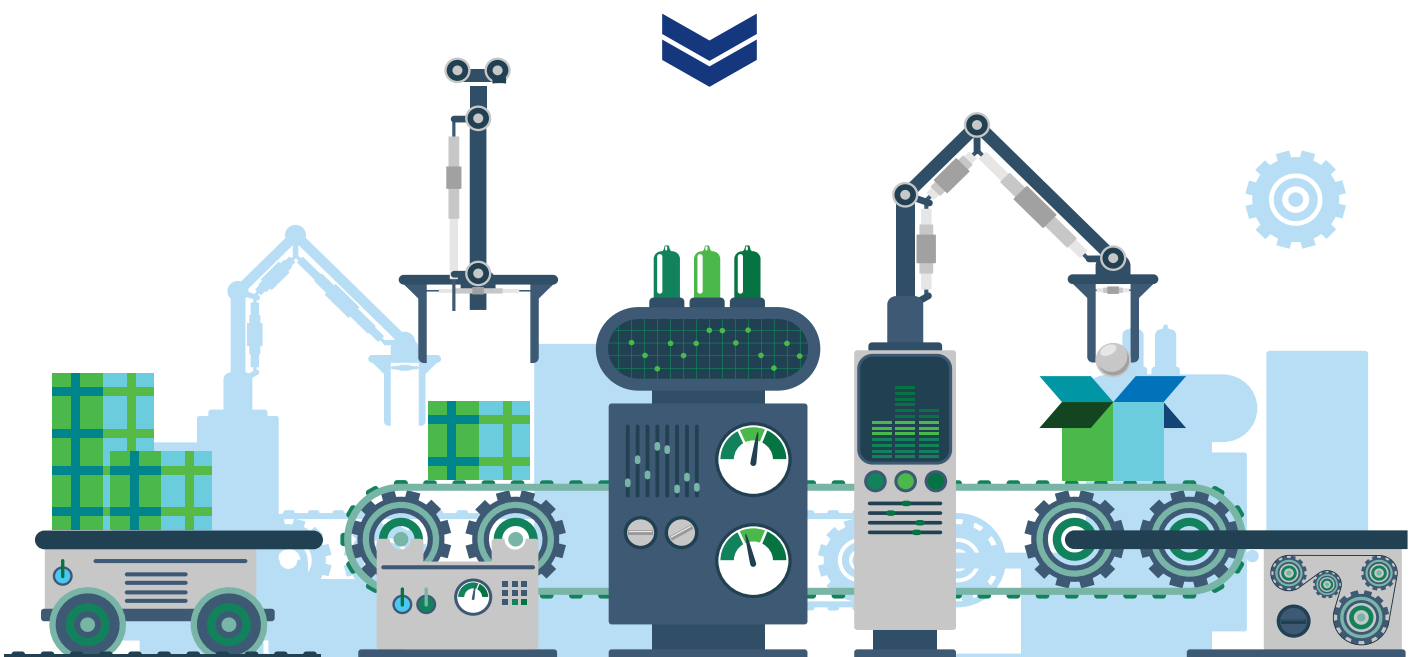
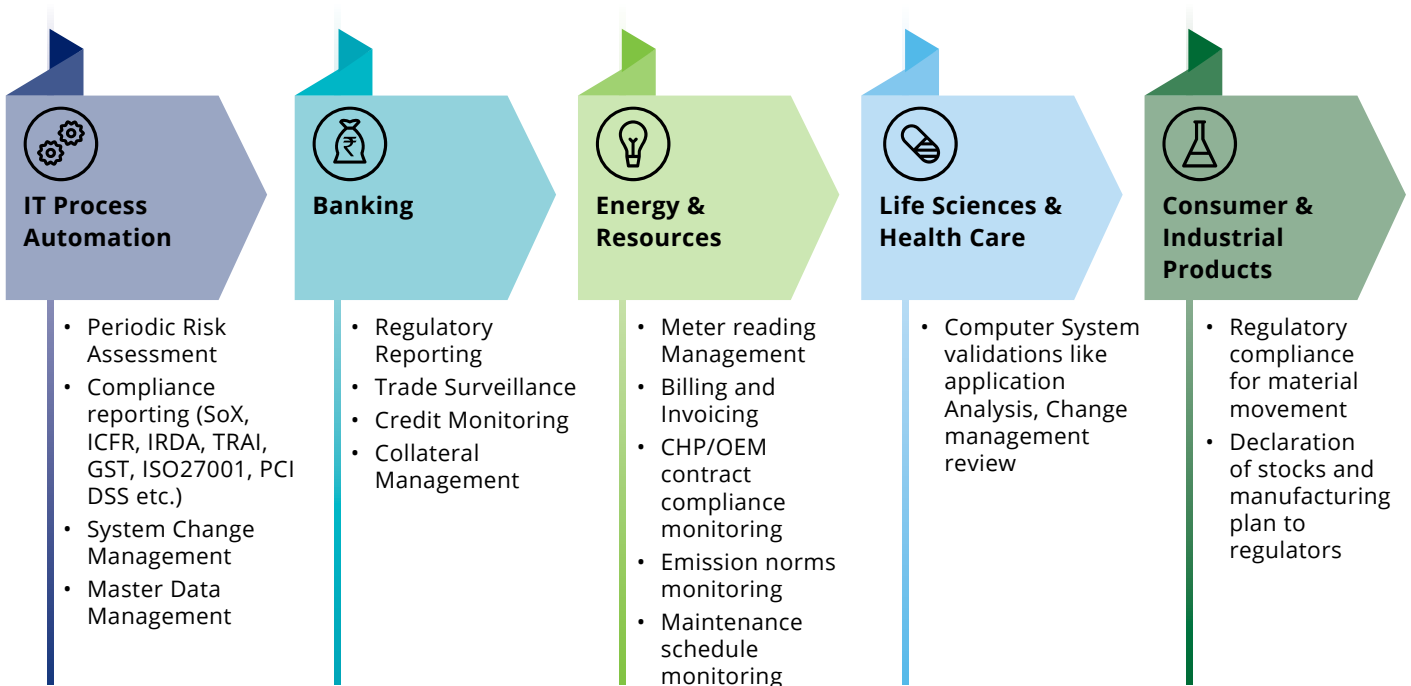
RPA Risk Maturity Benchmarking



Risk Management By the BOT

Industries today face a large number of internal and external compliance requirements. With the regulators adopting technology, the demand for timely and granular compliance is common. RPA provide a unique value proposition for many such requirements. A carefully designed RPA can improve the accuracy of records and response time. On the other hand, with 100% review of records, compliance monitoring through RPA improves the quality of reviews and enhance stakeholder confidence.

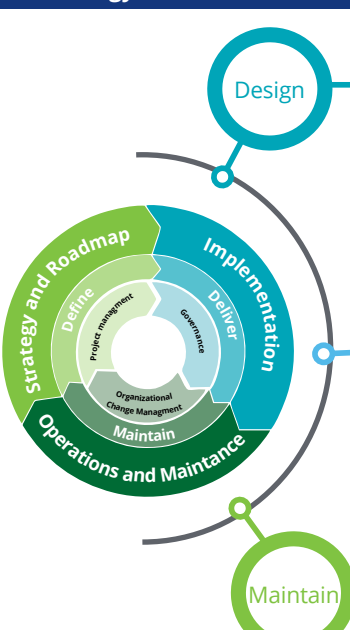
Illustrative view of RPA amenable Risk Management use cases are highlighted below.



How can we help?

Our RPA methodology is designed to help you throughout the RPA journey. Our team of risk and technology experts would help automate compliances as well secure your RPA environment.

Leveraging RPA for secured and compliant Technology environment



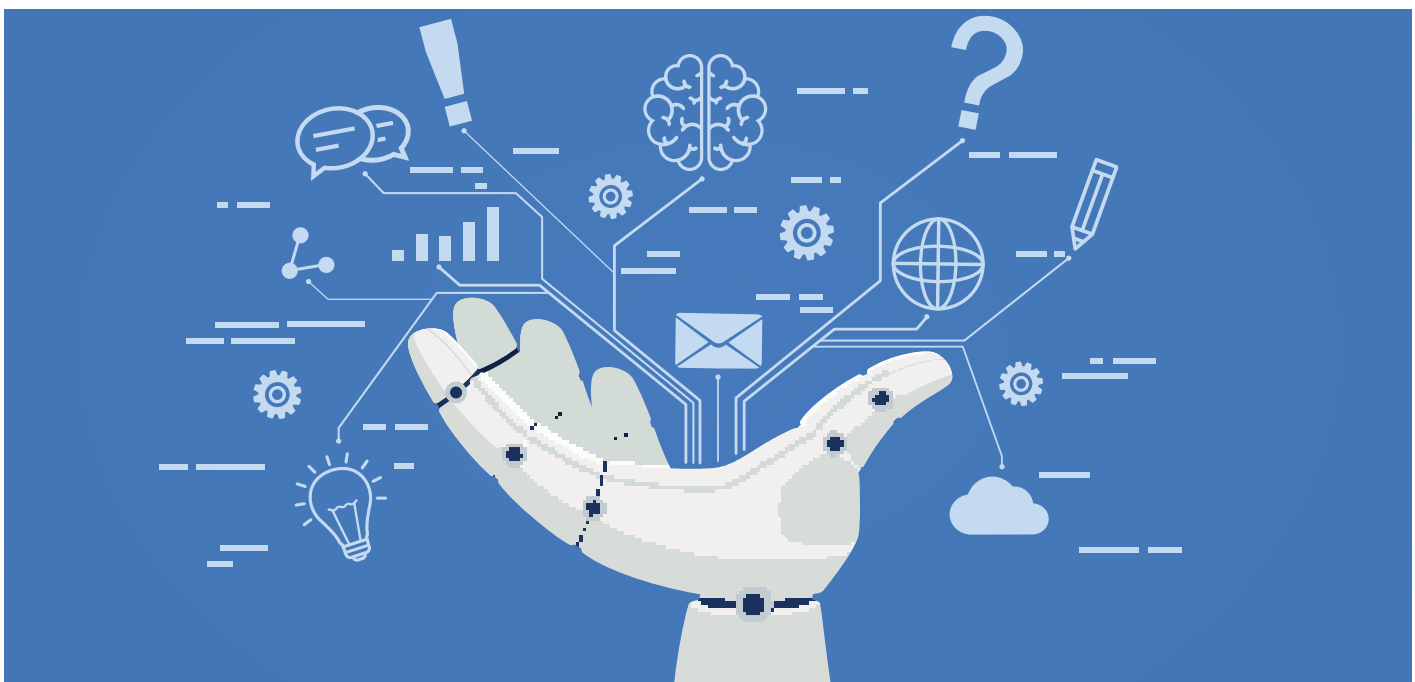
Design **Its all in design.** We bring our experience for enabling compliance across industries to help you choose the right candidates and design to-be processes. Maximum risk mitigation with optimal efforts.

Deploy Embedded controls is the best way to manage risks in any technology implementation. Our combined teams of technology and risk experts helps implement a secure RPA environment

Maintain With ever evolving risk and threats to the technology environments our experts help you prevent, detect and manage risks and threats to RPA environment

Making your RPA environment secured and compliant

- 01** Secured BOT Assurance for RPA implementation
- 02** Secured BOT Assurance for RPA products
- 03** RPA Risk Maturity Assessments
- 04** BOT Identify and Access Management
- 05** Managed Cyber security operations center – Center of Excellence
- 06** Incident management and response



Contacts

Rohit Mahajan

Partner | Leader

Risk Advisory

E-mail: rmahajan@deloitte.com

Senthilvel Kaliyamurthy

Partner

Risk Advisory

E-mail: senthilvelk@deloitte.com

Abhay Gupte

Partner

Risk Advisory

E-mail: agupte@deloitte.com

Ashish Sharma

Partner

Risk Advisory

E-mail: sashish@deloitte.com

Shree Parthasarathy

Partner

Risk Advisory

E-mail: sparthasarathy@deloitte.com

Prasad Godbole

Senior Manager

Risk Advisory

E-mail: prasadsg@deloitte.com

Anthony Crasto

Partner

Risk Advisory

E-mail: acrasto@deloitte.com



Deloitte refers to one or more of Deloitte Touche Tohmatsu Limited, a UK private company limited by guarantee (“DTTL”), its network of member firms, and their related entities. DTTL and each of its member firms are legally separate and independent entities. DTTL (also referred to as “Deloitte Global”) does not provide services to clients. Please see www.deloitte.com/about for a more detailed description of DTTL and its member firms.

This material has been prepared by Deloitte Touche Tohmatsu India LLP (“DTTILLP”), a member of Deloitte Touche Tohmatsu Limited, on a specific request from you and contains proprietary and confidential information. This material may contain information sourced from publicly available information or other third party sources. DTTILLP does not independently verify any such sources and is not responsible for any loss whatsoever caused due to reliance placed on information sourced from such sources. The information contained in this material is intended solely for you. Any disclosure, copying or further distribution of this material or its contents is strictly prohibited.

Nothing in this material creates any contractual relationship between DTTILLP and you. Any mutually binding legal obligations or rights may only be created between you and DTTILLP upon execution of a legally binding contract. By using this material and any information contained in it, the user accepts this entire notice and terms of use.

©2018 Deloitte Touche Tohmatsu India LLP. Member of Deloitte Touche Tohmatsu Limited

Deloitte Touche Tohmatsu India Private Limited (U74140MH199 5PTC093339), a private company limited by shares, was converted into Deloitte Touche Tohmatsu India LLP, a limited liability partnership (LLP Identification No. AAE-8458), with effect from October 1, 2015.