

## OVERVIEW

### Employee Lifecycle Companion - Augmenting Employee Experience

Employee Lifecycle Companion (ELC) is built for the 'Future of Work' and focused on elevating end-to-end digital Employee Experience and delivering instant gratification across the entire Hire-To-Retire lifecycle.

#### What are businesses looking for..

##### Elevated employee experience

- EX → CX → Business outcomes
- Millennial and Gen Z workforce engagement
- Manage hybrid workforce

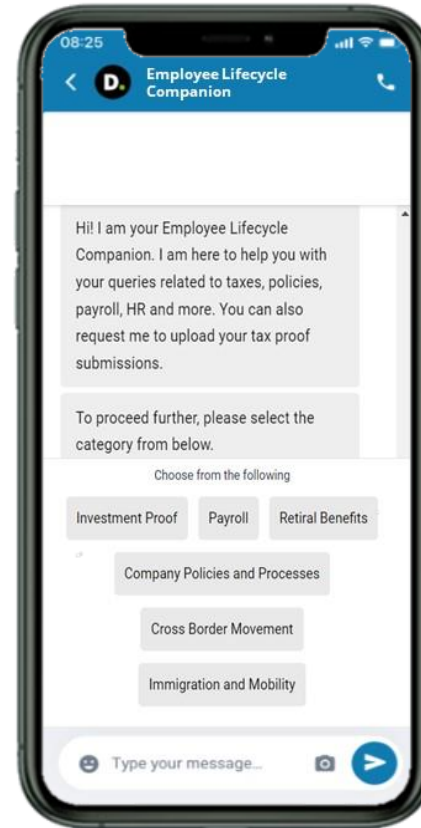
##### Improved Productivity

- Manage workload during peak hours (Finance/HR/ Payroll teams/Administrative teams)
- Focus on core work areas and reduce follow ups
- Early identification of employee constrains

##### Cost optimisation and simplification

- Drive single point of information spread across 8-10 legacy systems
- Annual audit and compliance costs
- Reduction in dependency on contract staff

#### ...and how we can solve for it

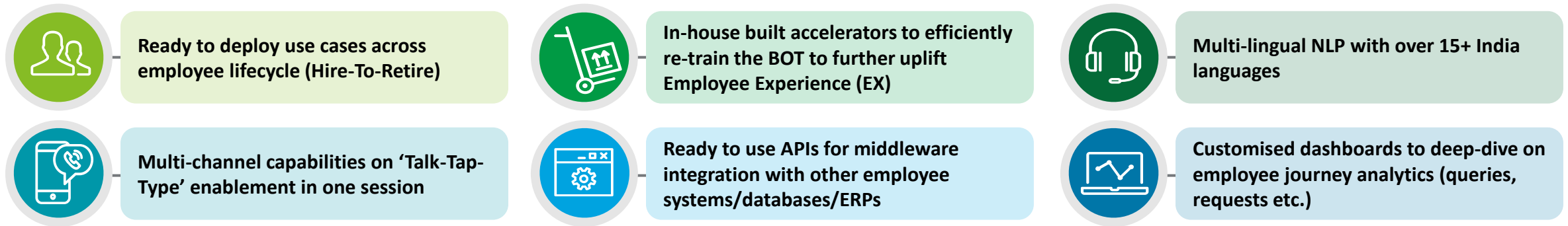
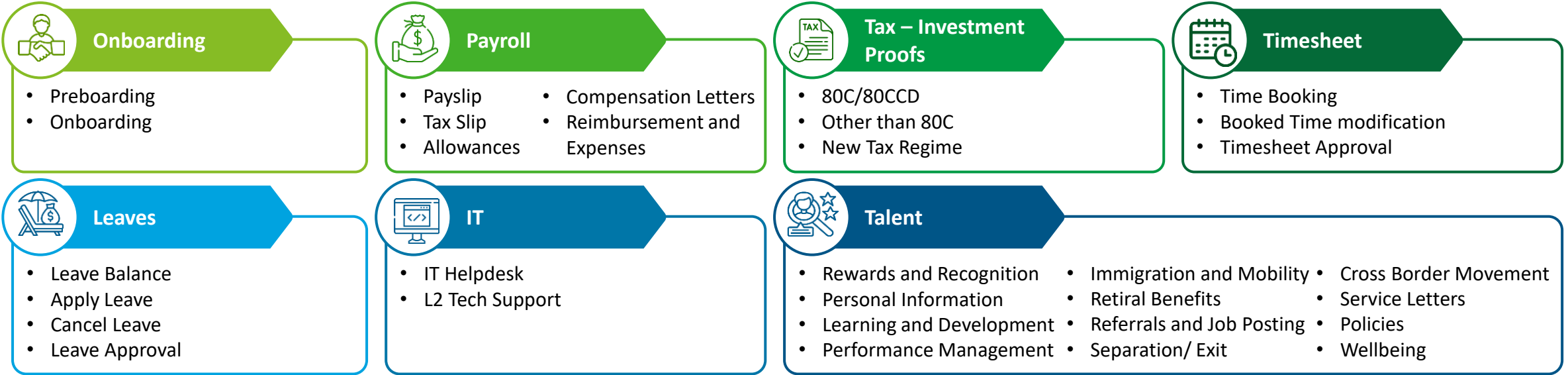


- ELC is a Conversational AI platform that provides a '**conversational layer**' to leading ERP and workflow tools enabling **human-like interactions**
- '**Talk-Type-Tap**' capabilities
- **Ticketing** process in place to streamline issues/ concerns
- Available **24 x 7**
- **Omni-channel** capabilities (Web, WhatsApp, App)
- **Self-learning** and contextualised to your environment based on advanced AI and ML
- **Capex light** model

# Modular options that can be easily scaled up

ELC has 7 modules and provides exponential benefits to an organisation to further uplift employee experience (EX).

## Modules



Deloitte refers to one or more of Deloitte Touche Tohmatsu Limited, a UK private company limited by guarantee ("DTTL"), its network of member firms, and their related entities. DTTL and each of its member firms are legally separate and independent entities. DTTL (also referred to as "Deloitte Global") does not provide services to clients. Please see [www.deloitte.com/about](http://www.deloitte.com/about) for a more detailed description of DTTL and its member firms. This material is prepared by Deloitte Touche Tohmatsu India LLP (DTTILLP). This material (including any information contained in it) is intended to provide general information on a particular subject(s) and is not an exhaustive treatment of such subject(s) or a substitute to obtaining professional services or advice. This material may contain information sourced from publicly available information or other third party sources. DTTILLP does not independently verify any such sources and is not responsible for any loss whatsoever caused due to reliance placed on information sourced from such sources. None of DTTILLP, Deloitte Touche Tohmatsu Limited, its member firms, or their related entities (collectively, the "Deloitte Network") is, by means of this material, rendering any kind of investment, legal or other professional advice or services. You should seek specific advice of the relevant professional(s) for these kind of services. This material or information is not intended to be relied upon as the sole basis for any decision which may affect you or your business. Before making any decision or taking any action that might affect your personal finances or business, you should consult a qualified professional adviser.

No entity in the Deloitte Network shall be responsible for any loss whatsoever sustained by any person or entity by reason of access to, use of or reliance on, this material. By using this material or any information contained in it, the user accepts this entire notice and terms of use.