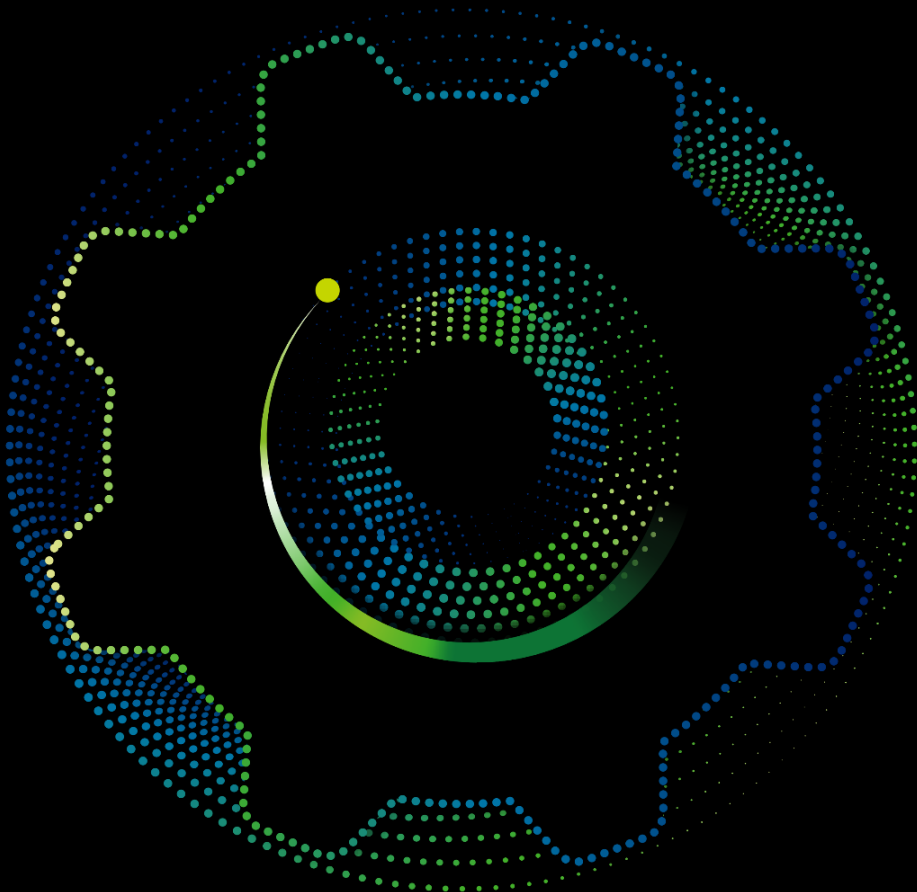


Deloitte.



TechTax Litigation Organizer®

Private and confidential
2024

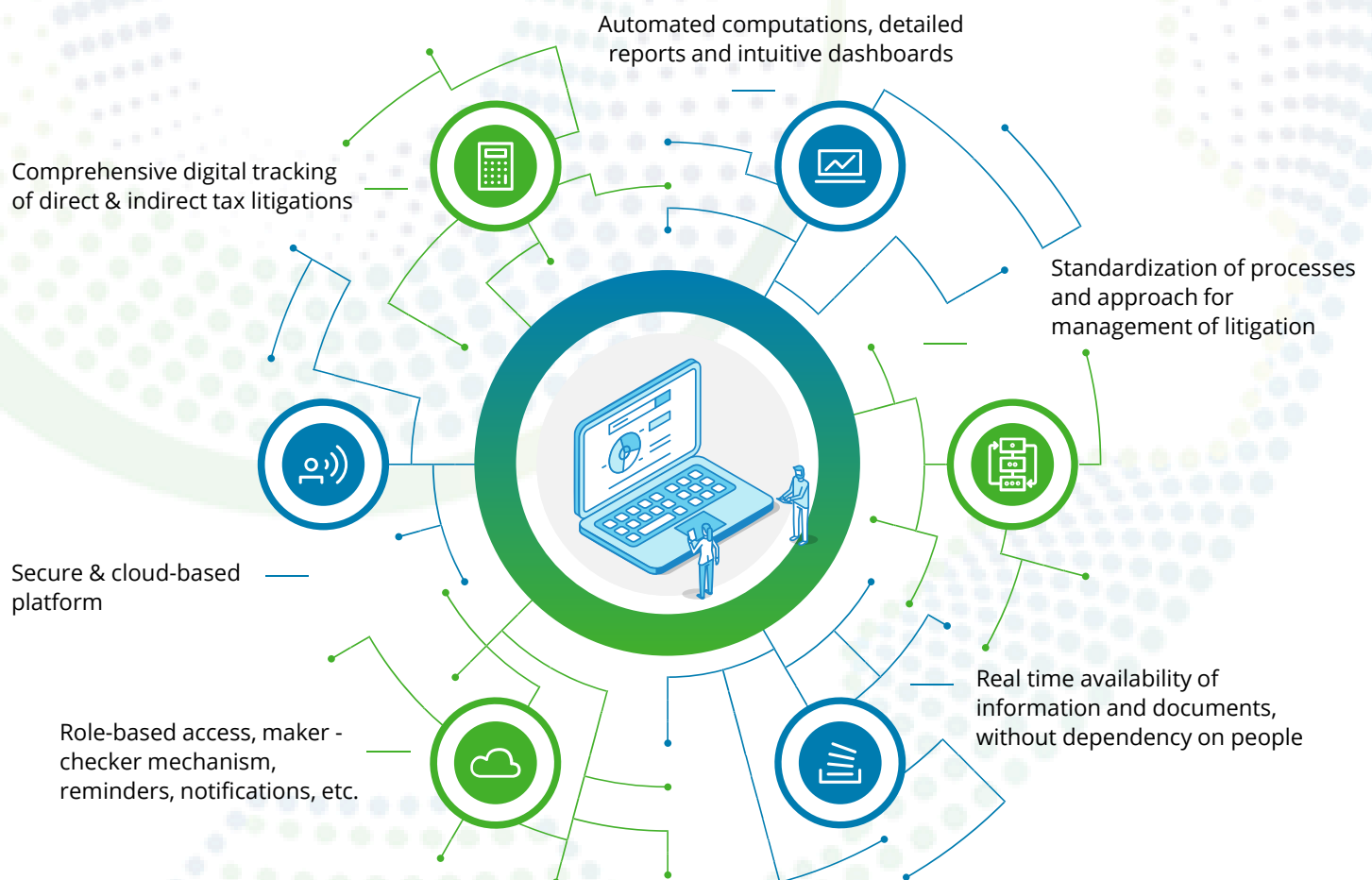
TechTax Litigation Organizer®

TechTax Litigation Organizer® is a robust self-service platform with which tax functions can manage the entire gamut of direct and indirect tax litigation, documentation, workflows and make use of intelligent insights available through intuitive dashboards and reports. The solution modular in built and hosted on secured cloud platform which brings scale, cost savings, speed and better user experience.

Reasons why you need this Tool

- Managing direct and indirect tax compliances and litigations can be cumbersome and challenging especially for a large organization
- Litigation can spread across several entities and assessment years and the resolution of each dispute may take years
- Lack of standardization, dependency on key individuals and use of traditional methods make the entire process more challenging
- Decentralized storage of data leading to data not being live or easily accessible as & when required
- No real time analytical dashboard and reports available before the Client management for making quick and efficient decisions

Value Propositions



TechTax Litigation Organizer®

Key features and benefits

Key differentiating features



- The tool does auto-computation of income, tax including interest computations and pre-populates data for instant comparisons at every stage of litigation process
- Modular offerings which fits all different categories of clients to the platform
- Advanced PPR analysis involving scientific computations of tax provision and contingent liability
- Intuitive dashboards and reports covering various aspects of tax litigation
- Advanced features such as integration with income tax portal for notice/ order download, Integration with external content provider for auto import of relevant case laws, circulars, etc, and TDS litigation module. (in the pipeline)



Key Benefits



- Robust workflow management features such as creation of planned action/ activities, alerts, notifications, maker-checker workflow, role-based access to users, informative landing page, etc
- Structured storage of data and its seamless retrieval from anywhere anytime
- Uploading GST returns and GST payment challans & auto pickup of values using OCR
- Email reminders on an approaching due dates for statutory compliances and ongoing litigations
- Dedicated repository for tax and regulatory updates which also provide issue specific insights
- Tracking of bank guarantees, LUTs and bonds for litigation (in the pipeline)

If you are keen to explore the offerings, please reach out to



Pritin Kumar
(pkumar@deloitte.com)

OR

Shrenik Shah
(shshah@deloitte.com)

OR

Dilip Sutar
(disutar@deloitte.com)

for necessary assistance.

Deloitte.

Deloitte refers to one or more of Deloitte Touche Tohmatsu Limited (“DTTL”), its global network of member firms, and their related entities (collectively, the “Deloitte organisation”). DTTL (also referred to as “Deloitte Global”) and each of its member firms and related entities are legally separate and independent entities, which cannot obligate or bind each other in respect of third parties. DTTL and each DTTL member firm and related entity is liable only for its own acts and omissions, and not those of each other. DTTL does not provide services to clients. Please see www.deloitte.com/about to learn more.

Deloitte Asia Pacific Limited is a company limited by guarantee and a member firm of DTTL. Members of Deloitte Asia Pacific Limited and their related entities, each of which is a separate and independent legal entity, provide services from more than 100 cities across the region, including Auckland, Bangkok, Beijing, Bengaluru, Hanoi, Hong Kong, Jakarta, Kuala Lumpur, Manila, Melbourne, Mumbai, New Delhi, Osaka, Seoul, Shanghai, Singapore, Sydney, Taipei and Tokyo.

This communication contains general information only. Further, some of the information and/or contents provided in this communication may have been generated by an artificial intelligence language model. While we strive for accuracy and quality, please note that the information and/or the contents provided are on as-is basis without any representations, warranties, undertakings or guarantees of accuracy or completeness and the same may not be entirely error-free or up-to-date. None of DTTL, its global network of member firms or their related entities is, by means of this communication, rendering professional advice or services. Before making any decision or taking any action, you should consult a qualified professional adviser.

None of DTTL, its member firms, related entities, employees or agents shall be liable or responsible for any loss or damage whatsoever arising directly or indirectly in connection with any person relying on this communication.