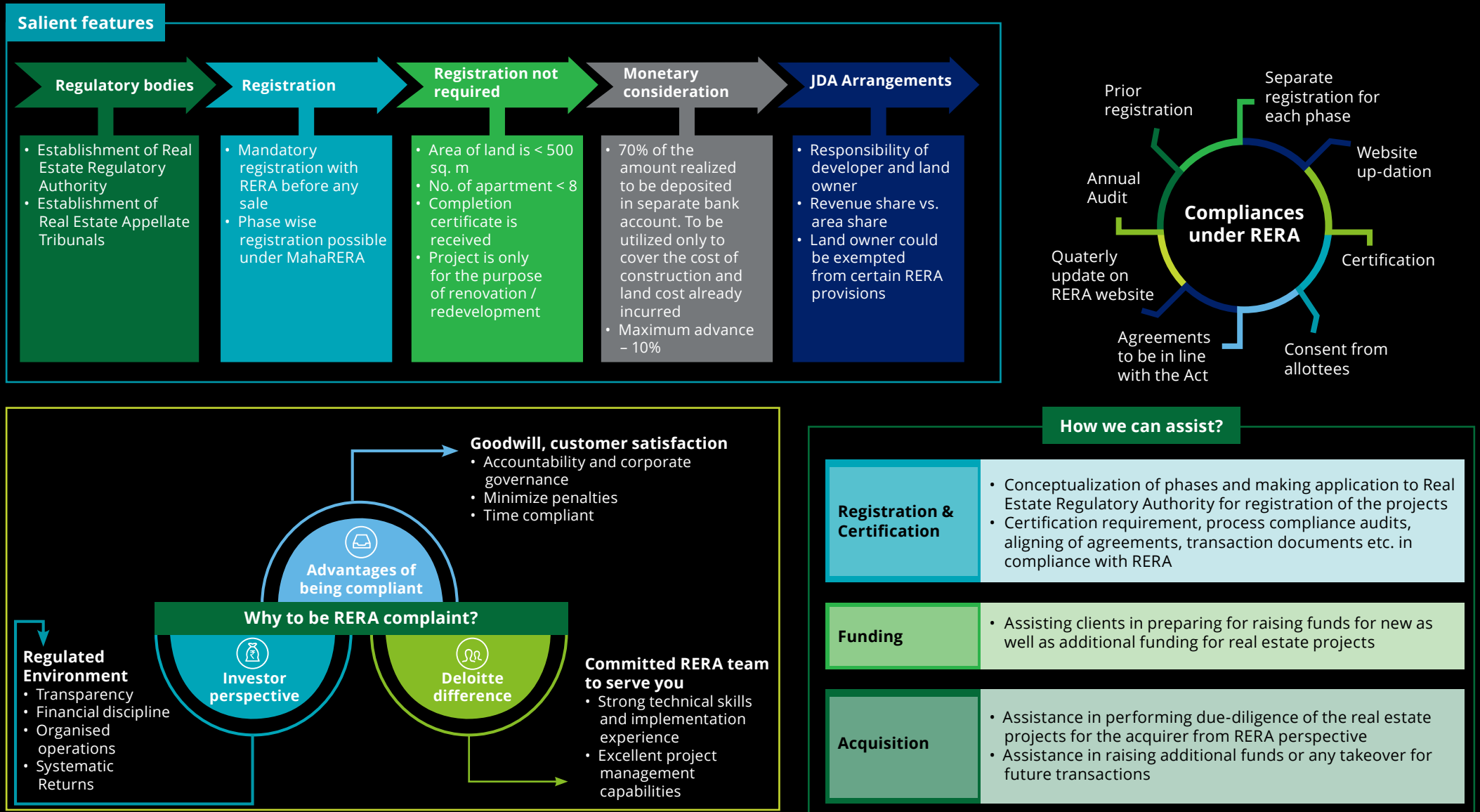


Real Estate Act : Need for change

Ministry of Law and Justice has notified the Real Estate (Regulation and Development) Act, 2016 (the Act) which has come into force effective 1 May 2017.



Contacts

Ahmedabad

19th Floor, Shapath -V
S. G. Highway,
Ahmedabad - 380015.
Tel: + 91 (079) 66827300
Fax: + 91 (079) 66827400

Hyderabad

1-8-384 and 385, 3rd Floor,
Gowra Grand S.P.Road,
Begumpet,
Secunderabad - 500 003.
Tel: +91 (040) 6603 2600
Fax: +91 (040) 6603 2714

Bangalore

Deloitte Centre, Anchorage II,
100/2, Richmond Road,
Bangalore 560 025.
Tel: +91 (080) 6627 6000
Fax: +91 (080) 6627 6010

Kolkata

Bengal Intelligent Park Building Alpha,
1st floor, Block EP and GP Sector V,
Salt Lake Electronics Complex,
Kolkata - 700 091.
Tel: + 91 (033) 6612 1000
Fax: + 91 (033) 6612 1001

Chennai

No.52, Venkatanarayana Road,
7th Floor, ASV N Ramana Tower,
T-Nagar,
Chennai 600 017.
Tel: +91 (044) 6688 5000
Fax: +91 (044) 6688 5050

Mumbai

Indiabulls Finance Centre,
Tower 3, 28th Floor,
Elphinstone Mill Compound,
Senapati Bapat Marg, Elphinstone
(W), Mumbai - 400013
Tel: + 91 (022) 6185 4000
Fax: + 91 (022) 6185 4101

Delhi/Gurgaon

Building 10, Tower B, 7th Floor,
DLF Cyber City,
Gurgaon 122 002
Tel: +91 (0124) 679 2000
Fax: + 91 (0124) 679 2012

Pune

706, B-Wing, 7th Floor,
ICC Trade Tower,
Senapati Bapat Road,
Pune - 411 016.
Tel: + 91 (020) 6624 4600
Fax: +91 (020) 6624 4605

Deloitte refers to one or more of Deloitte Touche Tohmatsu Limited, a UK private company limited by guarantee ("DTTL"), its network of member firms, and their related entities. DTTL and each of its member firms are legally separate and independent entities. DTTL (also referred to as "Deloitte Global") does not provide services to clients. Please see www.deloitte.com/about for a more detailed description of DTTL and its member firms.

This material and the information contained herein prepared by Deloitte Touche Tohmatsu India LLP (DTTILLP) is intended to provide general information on a particular subject or subjects and is not an exhaustive treatment of such subject(s). None of DTTILLP, Deloitte Touche Tohmatsu Limited, its member firms, or their related entities (collectively, the "Deloitte Network") is, by means of this material, rendering professional advice or services. The information is not intended to be relied upon as the sole basis for any decision which may affect you or your business. Before making any decision or taking any action that might affect your personal finances or business, you should consult a qualified professional adviser.

No entity in the Deloitte Network shall be responsible for any loss whatsoever sustained by any person who relies on this material.