

**Deloitte.**  
Private



## **Information on Deloitte Private**

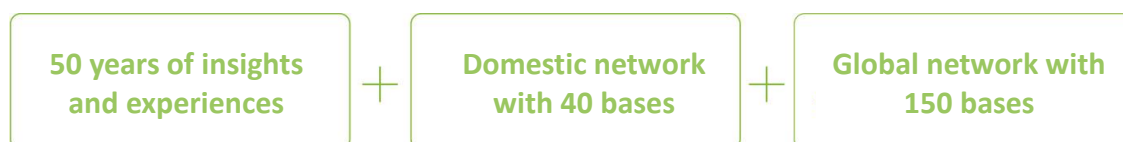
Solving Client Issues in the Private Market

# Deloitte Private

---

## What is Deloitte Private?

Deloitte Private Japan is an integrated platform that is focusing on private companies and owners of listed companies that support Japan, and providing comprehensive range of services that are tailored for the private market in response to the specific needs and lifecycles of companies. We will support the growth of our clients at unparalleled level with 50 years of insights and experiences in supporting leading Japanese companies and cutting-edge companies in the times, a fully-managed domestic network and a strong global network.



## Leader's message

The Global network of Deloitte has established Deloitte Private as an organization to respond cross-functionally to the challenges and needs of private companies and corporate owners.

In Japan, the sound development and continuation of “family companies” which support the majority of Japanese economy, employment and lives, “venture and growth companies” that will lead the next generation of Japan, and the funding mechanism for these companies are essential for Japanese society. For this reason, Deloitte Tohmatsu Group has decided it was necessary to establish an integrated platform across the Group to enable Japanese private companies and corporate owners to respond to the complex challenges and diverse needs faced in the domestic and global markets. To this end, we have established an organization that provides comprehensive services that incorporate the insights and methods of Deloitte network.

Deloitte Private Japan brings together existing services and organizational insights of Audit & Assurance, Risk Advisory, Consulting, Financial Advisory, Tax, Legal, and Deloitte Tohmatsu Venture Support in order to support the further growth of our clients through the unified brand of Deloitte network in Japan and overseas.



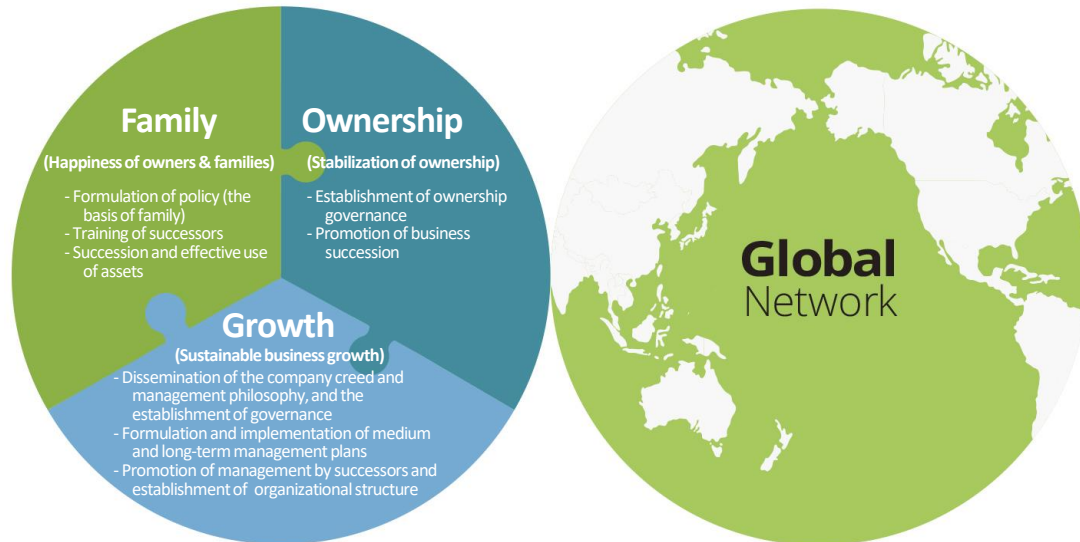
Deloitte Private Japan Leader  
Satoshi Sekine

---

\* Private company: A company that operates a family business and owners, private equity and ventures and growth companies. Private equity, etc.

# Three perspectives and a global network to support the growth and continuity of clients in the private market

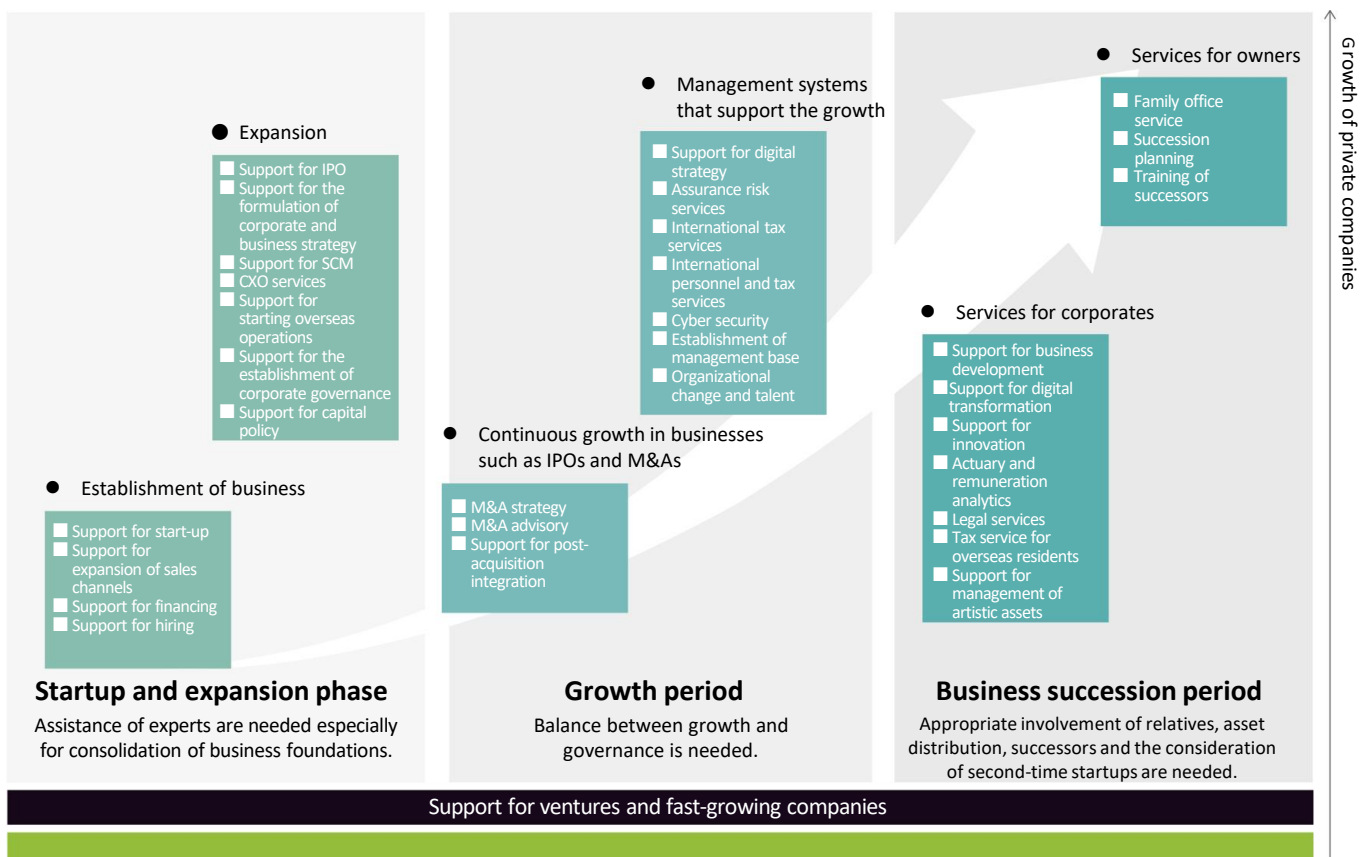
Deloitte Private Japan provides necessary and one-stop services when needed from the viewpoints of “Family,” “Ownership,” and “Growth,” which are important for the growth and continuation of private companies. The programs being implemented around the world will provide global insights and know-how to Japanese private companies and owners, and a strong support for overseas expansion and M&A.



## Professionals of startups, growth and succession will resolve challenges in the private market

There are several stages in the life cycle of a private company depending on the company's history and size. Each stage presents specific challenges. Experts of Deloitte Private Japan will provide detailed and comprehensive support to resolve the various challenges in each stage which families and businesses are facing.

### Private company's life cycle and services to be provided



\* Professionals in various fields of family business who can also respond to global expansion will provide sustained support.

# Deloitte.

## Private

For email inquiries about Deloitte Private Japan:  
[dpj@tohmatu.co.jp](mailto:dpj@tohmatu.co.jp)

Deloitte Tohmatsu Group (Deloitte Japan) is a collective term that refers to Deloitte Tohmatsu LLC, which is the Member of Deloitte Asia Pacific Limited and of the Deloitte Network in Japan, and firms affiliated with Deloitte Tohmatsu LLC that include Deloitte Touche Tohmatsu LLC, Deloitte Tohmatsu Consulting LLC, Deloitte Tohmatsu Financial Advisory LLC, Deloitte Tohmatsu Tax Co., DT Legal Japan, and Deloitte Tohmatsu Corporate Solutions LLC. Deloitte Tohmatsu Group is known as one of the largest professional services groups in Japan. Through the firms in the Group, Deloitte Tohmatsu Group provides audit & assurance, risk advisory, consulting, financial advisory, tax, legal and related services in accordance with applicable laws and regulations. With more than 15,000 professionals in about 30 cities throughout Japan, Deloitte Tohmatsu Group serves a number of clients including multinational enterprises and major Japanese businesses. For more information, please visit the Group's website at [www.deloitte.com/jp/en](http://www.deloitte.com/jp/en).

Deloitte refers to one or more of Deloitte Touche Tohmatsu Limited ("DTTL"), its global network of member firms, and their related entities (collectively, the "Deloitte organization"). DTTL (also referred to as "Deloitte Global") and each of its member firms and related entities are legally separate and independent entities, which cannot obligate or bind each other in respect of third parties. DTTL and each DTTL member firm and related entity is liable only for its own acts and omissions, and not those of each other. DTTL does not provide services to clients. Please see [www.deloitte.com/about](http://www.deloitte.com/about) to learn more.

Deloitte Asia Pacific Limited is a company limited by guarantee and a member firm of DTTL. Members of Deloitte Asia Pacific Limited and their related entities, each of which are separate and independent legal entities, provide services from more than 100 cities across the region, including Auckland, Bangkok, Beijing, Hanoi, Hong Kong, Jakarta, Kuala Lumpur, Manila, Melbourne, Osaka, Seoul, Shanghai, Singapore, Sydney, Taipei and Tokyo.

Deloitte provides industry-leading audit and assurance, tax and legal, consulting, financial advisory, and risk advisory services to nearly 90% of the Fortune Global 500® and thousands of private companies. Our professionals deliver measurable and lasting results that help reinforce public trust in capital markets, enable clients to transform and thrive, and lead the way toward a stronger economy, a more equitable society and a sustainable world. Building on its 175-plus year history, Deloitte spans more than 150 countries and territories. Learn how Deloitte's more than 345,000 people worldwide make an impact that matters at [www.deloitte.com](http://www.deloitte.com).

This communication contains general information only, and none of Deloitte Touche Tohmatsu Limited ("DTTL"), its global network of member firms, or their related entities (collectively, the "Deloitte organization") is, by means of this communication, rendering professional advice or services. Before making any decision or taking any action that may affect your finances or your business, you should consult a qualified professional adviser. No representations, warranties or undertakings (express or implied) are given as to the accuracy or completeness of the information in this communication, and none of DTTL, its member firms, related entities, employees or agents shall be liable or responsible for any loss or damage whatsoever arising directly or indirectly in connection with any person relying on this communication. DTTL and each of its member firms, and their related entities, are legally separate and independent entities.

Member of  
**Deloitte Touche Tohmatsu Limited**

© 2022. For information, contact Deloitte Tohmatsu Group.



**IS 669126 / ISO 27001**