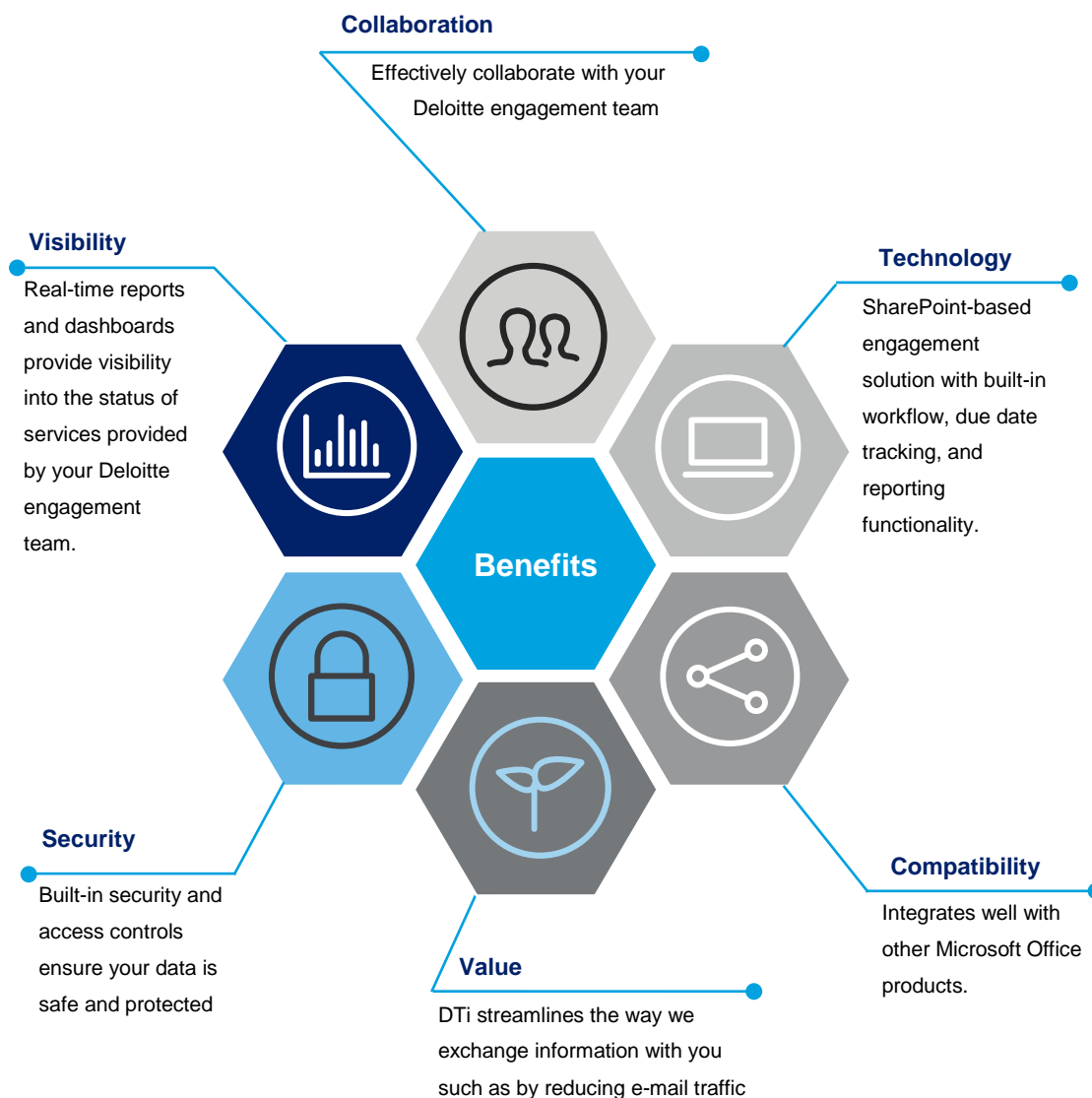


## Deloitte Tax Insight

### Tax engagement management platform

#### Centralized tax management

Deloitte Tax Insight (“DTI”) is a secure engagement management solution which provides a one-stop-shop for managing the delivery of our services to you. It is global, flexible, scalable and can be configured to organize information effectively based on the scope of services provided.



## DTi features

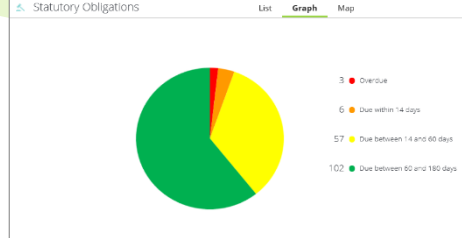
### 1 Due date tracker

The status of statutory obligations and other engagement deliverables is tracked in real-time

Jurisdiction	Entity	Document Type	Due Date	Status
Singapore	DTI WorldWide Singapore Pte Ltd	GST Filing Q3	31 Dec 2016	Cross Obligation
Singapore	DTI WorldWide Demco	GST Filing Q3	31 Dec 2016	Cross Obligation
Singapore	DTI WorldWide Singapore Pte Ltd	GST Payment Q3	31 Dec 2016	Cross Obligation
Singapore	DTI WorldWide Demco	GST Payment Q3	31 Dec 2016	Cross Obligation
United Kingdom	DTI WorldWide Holdings UK Ltd	VAT Filing Q3	31 Dec 2016	Cross Obligation
United Kingdom	DTI WorldWide Demco	VAT Filing Q3	31 Dec 2016	Cross Obligation
Germany	DTI WorldWide Holdings Germany GmbH	VAT Filing Q3	10 Nov 2016	Cross Obligation
Germany	DTI WorldWide Demco	VAT Filing Q3	10 Nov 2016	Cross Obligation
Germany	DTI WorldWide Holdings Germany GmbH	VAT Payment Q3	10 Nov 2016	Cross Obligation
Germany	DTI WorldWide Demco	VAT Payment Q3	10 Nov 2016	Cross Obligation

### 2 Status reports

Graphical reports provide quick and easy visibility into compliance activities.



### 3 Ease of use

An intuitive interface provides simple navigation. DTi is also accessible from smart devices.



### 4 Document library

Easily locate files based on entity, tax year, and type (e.g., tax return) through filtering.

Jurisdiction	Entity	Document Type	File Name	Project Name	Year	Document Title	Document Type
Belgium	DTI WorldWide Demco	Direct Tax	Data information case				File
Belgium	DTI WorldWide Demco	Direct Tax	Direct Tax		2014	Direct	Completed
Belgium	DTI WorldWide Demco	Direct Tax	Tax Return.pdf		2014	Direct	Tax Return

## Contact

### Deloitte Tohmatsu Tax Co.



**Jun Hashimoto**  
Partner  
Tel: +81 3 6213 3862  
jun.hashimoto@tohmatsu.co.jp



**Sam Reeves**  
Director  
Tel: +81 80 4087 6475  
sam.reeves@tohmatsu.co.jp

**Address** 〒100-0005 Shin-Tokyo Bldg. 5F, 3-3-1 Marunouchi Chiyoda-ku Tokyo Japan  
**Tel** +81 3 6213 3800  
**email** tax.cs@tohmatsu.co.jp (代)  
**Corporate Info** www.deloitte.com/jp/en/tax  
**Tax Services** www.deloitte.com/jp/tax/s/en

Deloitte Tohmatsu Group (Deloitte Japan) is the name of the Japan member firm group of Deloitte Touche Tohmatsu Limited (DTTL), a UK private company limited by guarantee, which includes Deloitte Touche Tohmatsu LLC, Deloitte Tohmatsu Consulting LLC, Deloitte Tohmatsu Financial Advisory LLC, Deloitte Tohmatsu Tax Co., DT Legal Japan, and all of their respective subsidiaries and affiliates. Deloitte Tohmatsu Group (Deloitte Japan) is among the nation's leading professional services firms and each entity in Deloitte Tohmatsu Group (Deloitte Japan) provides services in accordance with applicable laws and regulations. The services include audit, tax, legal, consulting, and financial advisory services which are delivered to many clients including multinational enterprises and major Japanese business entities through over 8,700 professionals in nearly 40 cities throughout Japan. For more information, please visit the Deloitte Tohmatsu Group (Deloitte Japan)'s website at [www.deloitte.com/jp/en](http://www.deloitte.com/jp/en).

Deloitte provides audit, consulting, financial advisory, risk management, tax and related services to public and private clients spanning multiple industries. Deloitte serves four out of five Fortune Global 500® companies through a globally connected network of member firms in more than 150 countries and territories bringing world-class capabilities, insights, and high-quality service to address clients' most complex business challenges. To learn more about how Deloitte's approximately 225,000 professionals make an impact that matters, please connect with us on [Facebook](https://www.facebook.com/deloitte), [LinkedIn](https://www.linkedin.com/company/deloitte), or [Twitter](https://twitter.com/deloitte).

Deloitte refers to one or more of Deloitte Touche Tohmatsu Limited, a UK private company limited by guarantee ("DTTL"), its network of member firms, and their related entities. DTTL and each of its member firms are legally separate and independent entities. DTTL (also referred to as "Deloitte Global") does not provide services to clients. Please see [www.deloitte.com/about](http://www.deloitte.com/about) to learn more about our global network of member firms.

This communication contains general information only, and none of Deloitte Touche Tohmatsu Limited, its member firms, or their related entities (collectively, the "Deloitte Network") is, by means of this communication, rendering professional advice or services. Before making any decision or taking any action that may affect your finances or your business, you should consult a qualified professional adviser. No entity in the Deloitte Network shall be responsible for any loss whatsoever sustained by any person who relies on this communication.

Member of  
**Deloitte Touche Tohmatsu Limited**

© 2016. For information, contact Deloitte Tohmatsu Tax Co.