



## **Tax Cube**

Deloitte Tohmatsu Tax Co.

## Building confidence in your tax controls

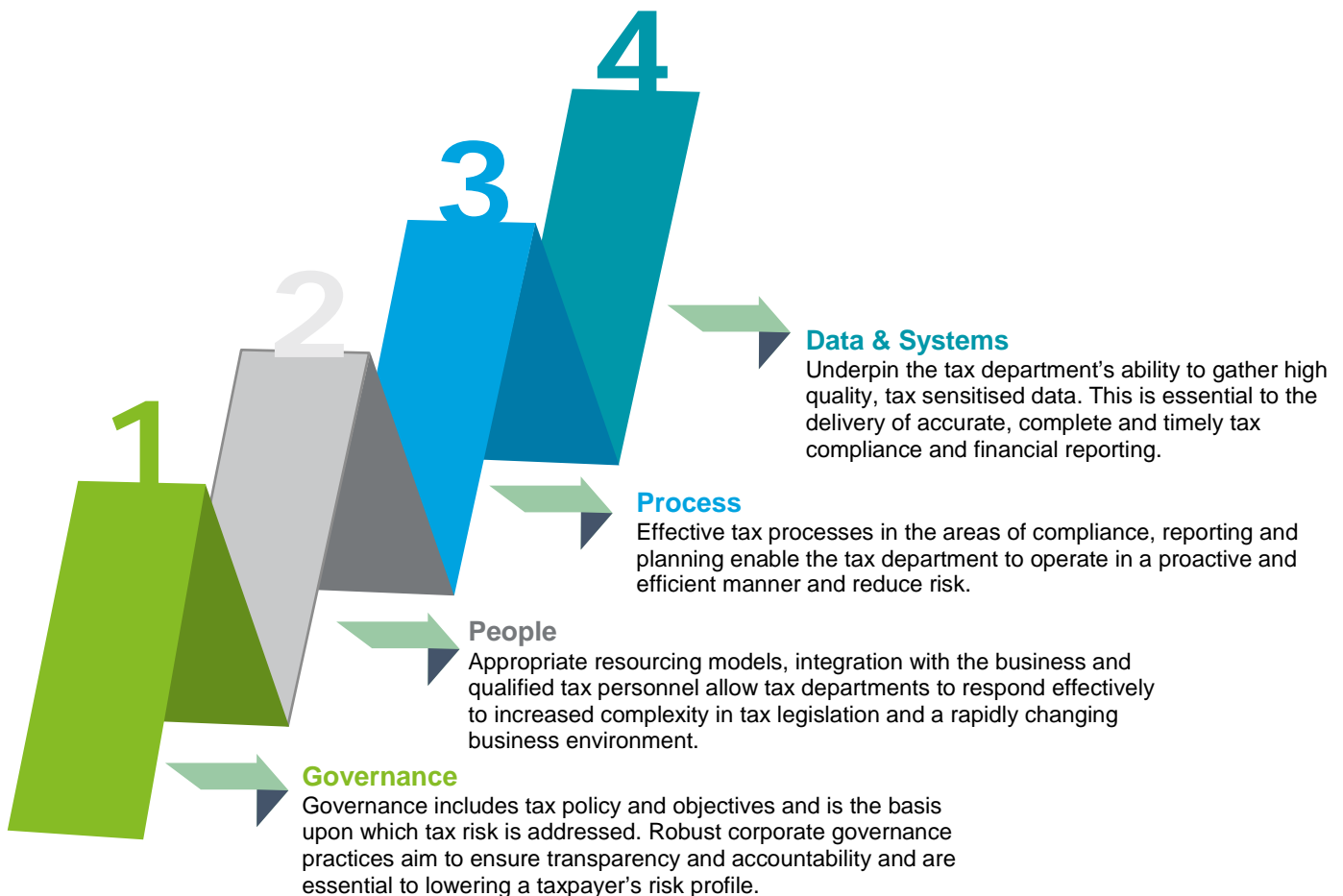
In times of regulatory change, economic uncertainty and heightened scrutiny into tax operations, leading organizations are taking a proactive approach to risk management.

The Tax Cube is a diagnostic assessment that will help you evaluate the current state of your tax arrangements and prioritise where you may need to focus next. The assessment can cover general tax management, corporate tax, Japanese consumption tax, payroll taxes, customs duties, transfer pricing and other taxes; the scope can be adjusted based on your priorities.

## How we work with you

The Tax Cube report is delivered through a collaborative workshop with Deloitte Japan that produces a visual heat-map which helps provide a level of confidence in existing controls and the underlying cause of any lack of confidence.

In the workshop you will answer a set of questions covering various aspects of your tax operations. Your responses will be scored based on our view of best practices and presented in an intuitive heat-map which for each tax area assesses risk in the following four areas:

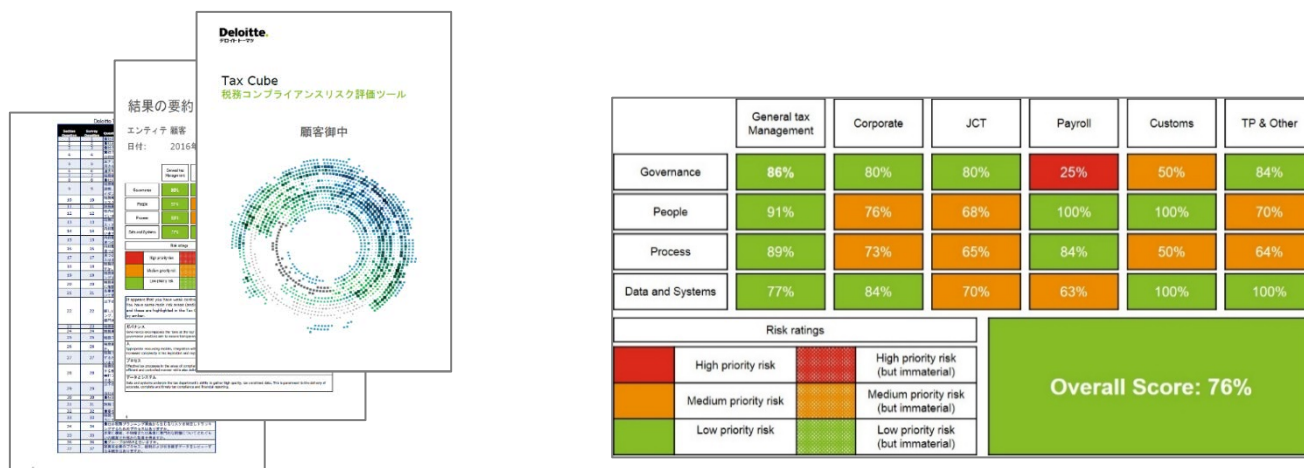


## Deliverables

The assessment will provide the following:

- An overall risk score
- A visual 'heat map' indicating risk levels based on our view of best practices
- Identified sources of underlying risks e.g. governance, people, process, data & systems

### Example report and heat-map



## Benefits

The Tax Cube report will allow you to:

- Gain a level of assurance in your current operations
- Identify potential areas of risk
- Develop a plan of action, where appropriate
- Focus your efforts and resources on the areas that matters most
- Inform and mobilize the relevant stakeholders in your organization

An extended Tax Cube assessment is available which will include specific recommendations on risk mitigation and tax process improvements and will be delivered as part of a follow up meeting with your team. You will have access to our tax experts who can advise on your planning and implementation of the necessary improvements to help reduce and manage the tax risks that were identified in the report.

## Contact

### Deloitte Tohmatsu Tax Co.



Jun Hashimoto  
Partner  
jun.hashimoto@tohmatu.co.jp



Sam Reeves  
Director  
sam.reeves@tohmatu.co.jp

Address 〒100-0005 Shin-Tokyo Bldg. 5F, 3-3-1 Marunouchi Chiyoda-ku Tokyo Japan  
Tel +81 3 6213 3800  
email tax.cs@tohmatu.co.jp  
Corporate Info www.deloitte.com/jp/en/tax  
Tax Services www.deloitte.com/jp/tax/s/en

# Deloitte.

## デロイトトーマツ

Deloitte Tohmatsu Group (Deloitte Japan) is the name of the Japan member firm group of Deloitte Touche Tohmatsu Limited (DTTL), a UK private company limited by guarantee, which includes Deloitte Touche Tohmatsu LLC, Deloitte Tohmatsu Consulting LLC, Deloitte Tohmatsu Financial Advisory LLC, Deloitte Tohmatsu Tax Co., DT Legal Japan, and all of their respective subsidiaries and affiliates. Deloitte Tohmatsu Group (Deloitte Japan) is among the nation's leading professional services firms and each entity in Deloitte Tohmatsu Group (Deloitte Japan) provides services in accordance with applicable laws and regulations. The services include audit, tax, legal, consulting, and financial advisory services which are delivered to many clients including multinational enterprises and major Japanese business entities through over 9,400 professionals in nearly 40 cities throughout Japan. For more information, please visit the Deloitte Tohmatsu Group (Deloitte Japan)'s website at [www.deloitte.com/jp/en](http://www.deloitte.com/jp/en).

Deloitte provides audit, consulting, financial advisory, risk advisory, tax and related services to public and private clients spanning multiple industries. Deloitte serves four out of five Fortune Global 500® companies through a globally connected network of member firms in more than 150 countries and territories bringing world-class capabilities, insights, and high-quality service to address clients' most complex business challenges. To learn more about how Deloitte's approximately 245,000 professionals make an impact that matters, please connect with us on [Facebook](#), [LinkedIn](#), or [Twitter](#).

Deloitte refers to one or more of Deloitte Touche Tohmatsu Limited, a UK private company limited by guarantee ("DTTL"), its network of member firms, and their related entities. DTTL and each of its member firms are legally separate and independent entities. DTTL (also referred to as "Deloitte Global") does not provide services to clients. Please see [www.deloitte.com/about](http://www.deloitte.com/about) to learn more about our global network of member firms.

This communication contains general information only, and none of Deloitte Touche Tohmatsu Limited, its member firms, or their related entities (collectively, the "Deloitte Network") is, by means of this communication, rendering professional advice or services. Before making any decision or taking any action that may affect your finances or your business, you should consult a qualified professional adviser. No entity in the Deloitte Network shall be responsible for any loss whatsoever sustained by any person who relies on this communication.

Member of  
**Deloitte Touche Tohmatsu Limited**

© 2017. For information, contact Deloitte Tohmatsu Tax Co.