



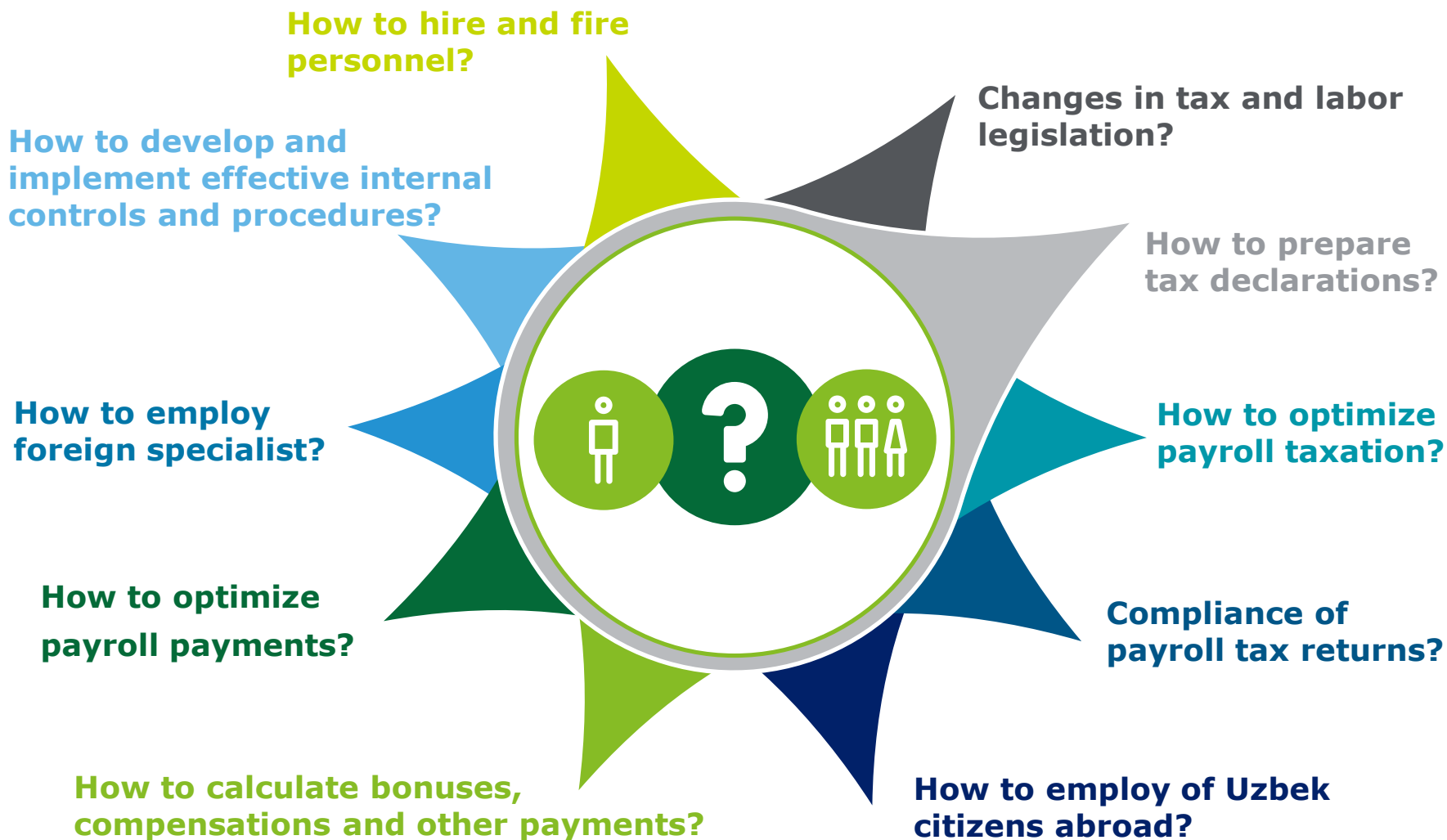
**Employer and employees  
questions**

Tax & Legal, April 2017

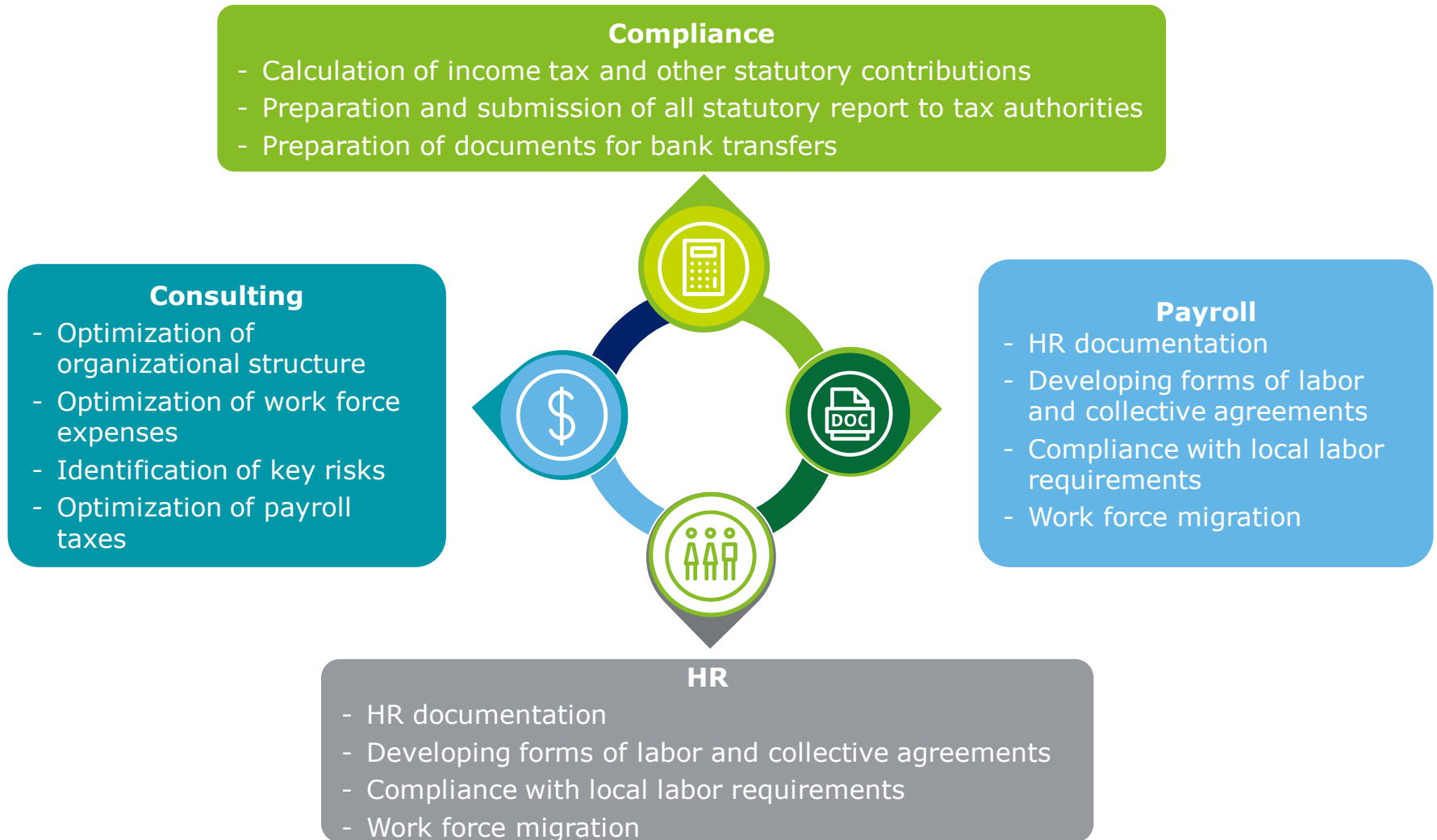
Nowadays relations between employees and employers are complex and not limited only with labor contracts. Especially questions of fast changing legislation, procedures of monthly payroll, effective controls, compound bonus and motivation schemes, optimal taxation rise in daily operations.

An independent and well-reasoned opinion from Deloitte can help an employer better understand how to manage its payroll process and form relevant documentation, make sure it is complete, and prevent potential breaches of tax and labor legislation, which could have negative consequences for the whole company.

# Employer and employees questions



# Our services



# How to contact us

Should you have any questions about given information or any other questions regarding business operations in Uzbekistan, please do not hesitate to contact any of our team members.

## Tashkent

Deloitte & Touche Audit  
Organisation LLC

Mustakillik Avenue 75,  
Tashkent, 100000

Republic of Uzbekistan

Tel: +998 (71) 120 44 45/46

Fax: +998 (71) 120 44 47

## Vladimir Kononenko

**Partner, Tax & Legal**

[vkononenko@deloitte.kz](mailto:vkononenko@deloitte.kz)

Tel: +7 (727) 258 13 40 ext. 2755

## Andrey Tyo

**Manager, Tax & Legal**

[antyo@deloitte.uz](mailto:antyo@deloitte.uz)

Tel: +998 (71) 120 44 45/46

## Bakhtiyor Sufiev

**Senior tax consultant, Tax & Legal**

[bsufiev@deloitte.uz](mailto:bsufiev@deloitte.uz)

Tel: +998 (71) 120 44 45/46





## **deloitte.uz**

### **About Deloitte**

Deloitte refers to one or more of Deloitte Touche Tohmatsu Limited, a UK private company limited by guarantee ("DTTL"), its network of member firms, and their related entities. DTTL and each of its member firms are legally separate and independent entities. DTTL (also referred to as "Deloitte Global") does not provide services to clients. Please see [www.deloitte.com/about](http://www.deloitte.com/about) for a more detailed description of DTTL and its member firms.

Deloitte provides audit, consulting, financial advisory, risk management, tax and related services to public and private clients spanning multiple industries. Deloitte serves four out of five Fortune Global 500® companies through a globally connected network of member firms in more than 150 countries bringing world-class capabilities, insights, and high-quality service to address clients' most complex business challenges. To learn more about how Deloitte's approximately 244,000 professionals make an impact that matters, please connect with us on [Facebook](#), [LinkedIn](#), or [Twitter](#).

This communication contains general information only, and none of Deloitte Touche Tohmatsu Limited, its member firms, or their related entities (collectively, the "Deloitte Network") is, by means of this communication, rendering professional advice or services. Before making any decision or taking any action that may affect your finances or your business, you should consult a qualified professional adviser. No entity in the Deloitte Network shall be responsible for any loss whatsoever sustained by any person who relies on this communication.