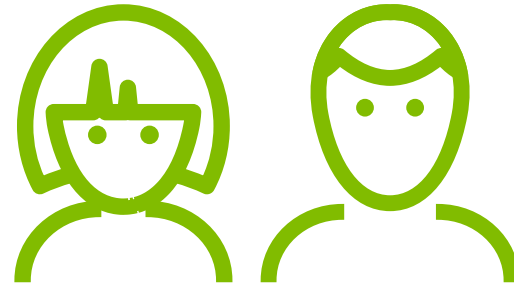


FY15 revenue highlights



REVENUE
\$35.2Bn



HEADCOUNT
225,000



NEW HIRES
62,000



**COUNTRIES &
TERRITORIES**
MORE THAN **150**



OFFICES
725



**COMMUNITY
INVESTMENTS**
\$200M

Global figures are aggregated across DTTL and its member firms.
Amounts may not sum to totals due to rounding.

© 2015. For information, contact Deloitte Touche Tohmatsu Limited

Deloitte.