

Deloitte.

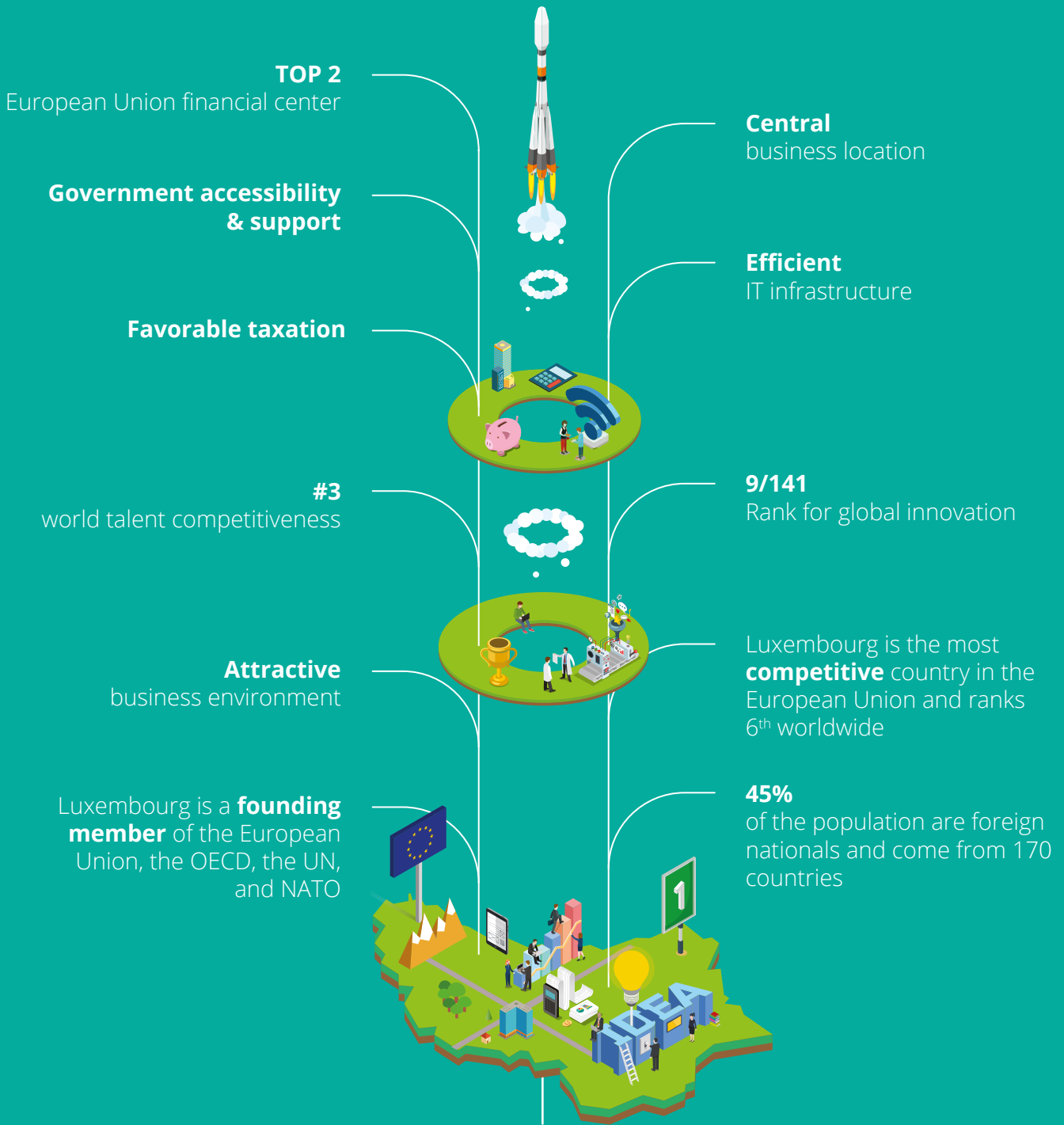


Boost

Launch and grow your startup
in Luxembourg with Deloitte

LUXEMBOURG

YOUR INNOVATION HUB AND GATEWAY TO EUROPE



At the heart of the world's largest Single Market



WE WILL HELP YOU **SET UP & GROW** YOUR BUSINESS AS WELL AS **DEVELOP YOUR FOOTPRINT** IN THE INDUSTRY

1

Incorporation

- Incorporation
- Direct tax services
- Payroll
- VAT services

2

Licensing

- License selection
- License application file
- Implementation of the licensed institution

3

Human Resources

- Operational support
- Employment formalities
- Training
- Recruitment
- Payroll

4

R&D Subsidies

- Program matching
- Grant application
- Contract negotiation
- Compliance

5

Finance

- Valuation
- Financial modeling
- Transaction services
- Capital raising
- CFO services

A

Growth

- Business and marketing strategy
- Technology strategy, architecture, and security
- Operations excellence
- Business plan
- Access to Deloitte's global ecosystem

B

Accounting

- Accounting compliance services
- Approval of annual accounts
- Direct Tax compliance
- VAT compliance
- E-filing of accounts



Contacts



Patrick Laurent
Partner - Technology Leader
+352 451 454 170
palaurent@deloitte.lu



Marco Lichtfous
Partner - Finance and Regulation Expert
+352 451 454 876
mlichtfous@deloitte.lu



Luc Brucher
Partner - Healthcare and Life Sciences Leader
+352 451 454 704
lbrucher@deloitte.lu



Joachim Heukmes
Partner - Finance
+352 451 452 037
jheukmes@deloitte.lu



Jean-Philippe Foury
Partner - Tax & Accounting
+352 451 452 418
jpfoury@deloitte.lu



Carlo Duprel
Director - Fintech Leader
+352 451 453 001
cduprel@deloitte.lu

Deloitte Luxembourg
560 rue de Neudorf
L-2220 Luxembourg
Grand Duchy of
Luxembourg

Tel.: +352 451 451
Fax: +352 451 452 401
www.deloitte.lu

Deloitte is a multidisciplinary service organization which is subject to certain regulatory and professional restrictions on the types of services we can provide to our clients, particularly where an audit relationship exists, as independence issues and other conflicts of interest may arise. Any services we commit to deliver to you will comply fully with applicable restrictions.

This communication contains general information only, and none of Deloitte Touche Tohmatsu Limited, its member firms, or their related entities (collectively, the "Deloitte network") is, by means of this communication, rendering professional advice or services. Before making any decision or taking any action that may affect your finances or your business, you should consult a qualified professional adviser. No entity in the Deloitte network shall be responsible for any loss whatsoever sustained by any person who relies on this communication.

About Deloitte Touche Tohmatsu Limited:

Deloitte refers to one or more of Deloitte Touche Tohmatsu Limited, a UK private company limited by guarantee ("DTTL"), its network of member firms, and their related entities. DTTL and each of its member firms are legally separate and independent entities. DTTL (also referred to as "Deloitte Global") does not provide services to clients. Please see www.deloitte.com/about for a more detailed description of DTTL and its member firms.

Deloitte provides audit, consulting, financial advisory, risk management, tax and related services to public and private clients spanning multiple industries. Deloitte serves four out of five Fortune Global 500® companies through a globally connected network of member firms in more than 150 countries bringing world-class capabilities, insights, and high-quality service to address clients' most complex business challenges. To learn more about how Deloitte's approximately 225,000 professionals make an impact that matters, please connect with us on Facebook, LinkedIn, or Twitter.