



Connect to Lunch'n learn!
Digital Training programme 2020-2021



ALTERNATIVE INVESTMENTS

Fund structuring for Alternative investment funds

7 October 2020

Dany Teillant

- The concept of AIF and platform from a Luxembourg direct tax perspective,
- The VAT aspects that need to be taken into consideration when dealing with AIFs and acquisition vehicles
- The transfer pricing points of attention around the AIF and its organs and service providers.

The impact of COVID-19 on infrastructure deals

18 November 2020

Francisco da Cunha // Joao Almeida

Diversify your asset classes (e.g. Art, alternative investments, etc.)

25 November 2020

Xavier Turquin // Adriano Picinati di Torcello

Alternative investments: Market trends, Operating models, Regulatory and Tax trends

2 December 2020

Arnaud Bon // Philippe Theissen // Dany Teillant



BANKING

2020 HR Trends

16 September 2020

Pascal Martino // Marc Sniukas

- Welcome
- HR Trends 2020
- Q&A

Governance and organization of the supervision

27 January 2021

Jean Philippe Peters // Bertrand Parfait

How digitally mature is Luxembourg's private banking sector?

10 February 2021

Xavier Turquin // Erika Bourguet

Mutualization and outsourcing trends: from competition to cooperation

3 March 2021

Alexandre Havard // Erika Bourguet



INVESTMENT FUNDS

CSSF Circular 2002/77: NAV errors and compliance breaches management and corrections

28 October 2020

Nicolas Hennebert // Virginie Boulot // Anne Ricci

Fund Tax update: Update on latest trends

13 January 2021

Jacquou Martin

Industrialisation in Asset Servicing – it is more than about securities and payments

24 February 2021

Jean-François Giuliani // Philippe Hijazin // Nicolas Griedlich

Investment Compliance for IM

31 March 2021

Sebastien Kellen // Pauline Legrain

Luxembourg management companies: Operating models, Due Diligence and Oversight requirements

21 April 2021

Alice Lehnert

Transfer Pricing dimension of regulated management companies

14 July 2021

Ralf Heussner // Enrique De Marchesi

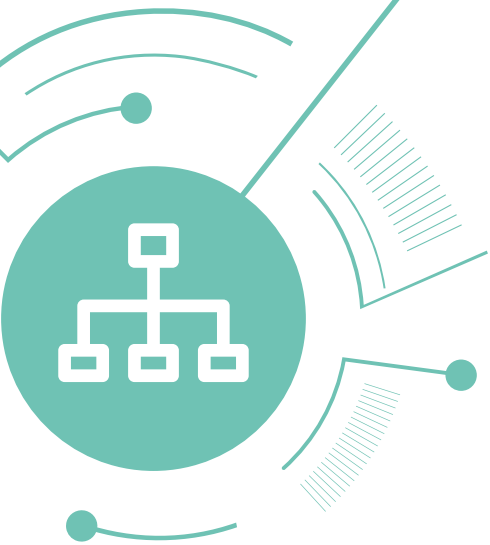


OPERATIONS & TECHNIQUES

Share Class Hedging Techniques and Monitoring

19 May 2021

Julien Baguet // Paul Halbeher





REGULATORY

Performance Fees: New ESMA Guidelines implications

30 September 2020

Jean-Paul Frisot

- Scope and Timeline
- Guidelines analysis
- Impacts for the stakeholders
- Discussion on the guidelines open to interpretation.

Shareholder Directive II

11 November 2020

Astrid Brandy

- **Context** → Towards a greater transparency of the investment ecosystem
- **Objective** → Encourage long-term engagement
- **Scope** → Extraterritorial application and misalignment on key notions
- **Impacts** → Obligation to enhance transparency all along the investment process
- **Process** → Modes of exchange of information between issuers, intermediaries and shareholders
- **Documentation** → Published market standards and other relevant guidance
- **Feedback** → Two months of SRDII messages exchange

Financial and regulatory reporting challenges and opportunities

16 December 2020

Jean Philippe Peters // Laurent Collet // Benoit Sauvage

Trends in cyber risk and regulation for financial institutions

16 June 2021

Stéphane Hurtaud

RISK & ASSET MANAGEMENT

Introduction to risk management: Risk management for UCITS and AIFs

10 March 2021

Gildas Blanchard // Monika Zlopasa

Distribution and Product lifecycle management – The ManCo as a key stakeholder

02 June 2021

Marc Noirhomme // Markus Schwamborn



SUSTAINABILITY

Sustainability impacts and opportunities for the financial sector

30 June 2021

Pascal Martino // Florence Buron // Elodie Vandewoestyne



TECHNOLOGY AND INNOVATION

Cloud: Opportunities and possibilities

14 October 2020

Sebastien Genco

ManCo Tech: This time it is for real!

5 May 2021

Arnaud Bouchain // Jean-François Belflamme // Jérôme Sosnowski





Deloitte refers to one or more of Deloitte Touche Tohmatsu Limited (“DTTL”), its global network of member firms, and their related entities (collectively, the “Deloitte organization”). DTTL (also referred to as “Deloitte Global”) and each of its member firms and related entities are legally separate and independent entities, which cannot obligate or bind each other in respect of third parties. DTTL and each DTTL member firm and related entity is liable only for its own acts and omissions, and not those of each other. DTTL does not provide services to clients. Please see www.deloitte.com/about to learn more.

Deloitte is a leading global provider of audit and assurance, consulting, financial advisory, risk advisory, tax and related services. Our global network of member firms and related entities in more than 150 countries and territories (collectively, the “Deloitte organization”) serves four out of five Fortune Global 500® companies. Learn how Deloitte’s approximately 312,000 people make an impact that matters at www.deloitte.com.

This communication contains general information only, and none of Deloitte Touche Tohmatsu Limited (“DTTL”), its global network of member firms or their related entities (collectively, the “Deloitte organization”) is, by means of this communication, rendering professional advice or services. Before making any decision or taking any action that may affect your finances or your business, you should consult a qualified professional adviser.

No representations, warranties or undertakings (express or implied) are given as to the accuracy or completeness of the information in this communication, and none of DTTL, its member firms, related entities, employees or agents shall be liable or responsible for any loss or damage whatsoever arising directly or indirectly in connection with any person relying on this communication. DTTL and each of its member firms, and their related entities, are legally separate and independent entities.