

Deloitte.



D.Ready for MiFID II

Your integrated regulatory
and compliance solution

D.Ready - We can support you throughout your MiFID II compliance journey

With MiFID II now in force since 3 January 2018, it is important to be ready and prepared for the upcoming on-site visits from the national competent authorities (NCA). Our team of specialists and our MiFID II taskforce can support you from the inception of your MiFID II project through to the implementation, and further on to the preparation and follow up of the NCA on-site visit.



Regulatory health check

Assess the impacts of the regulation on your organizational and operational set-up and **identify the potential gaps/improvements**



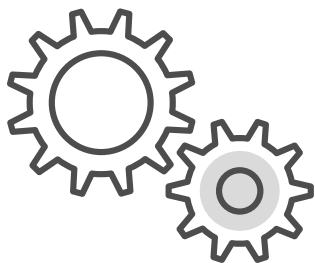
Implementation support

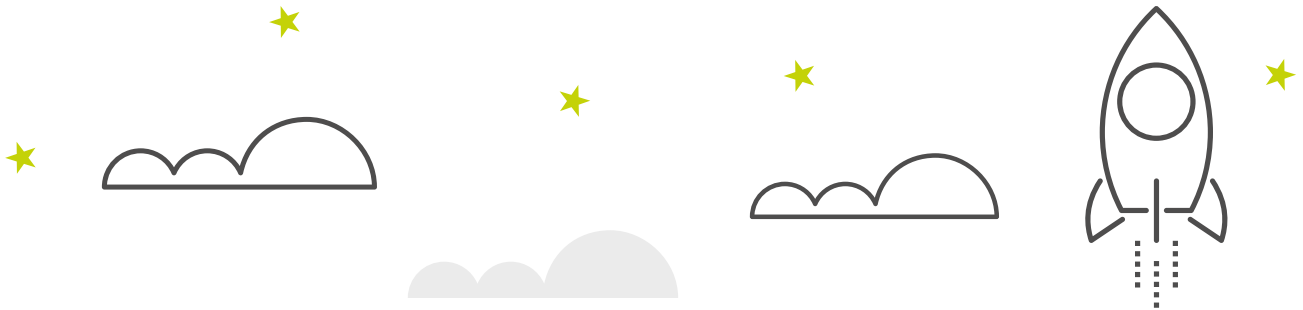
Assess priorities and strategic decisions, **prepare an implementation roadmap**, conduct detailed analyses, **define business requirements**



Remediation plan

Prepare your **remediation plan**, i.e., describe your current status and planning for the remediation of the open items





On-site visit preparation

Prepare the **presentation document to be submitted to the NCA**, **simulate** the NCA on-site visit in order to highlight the potential gaps/improvements, or **assist in answering to NCA observations**



Internal control framework

Assess/review/design the internal control framework of the organization (e.g. three lines of defence model)



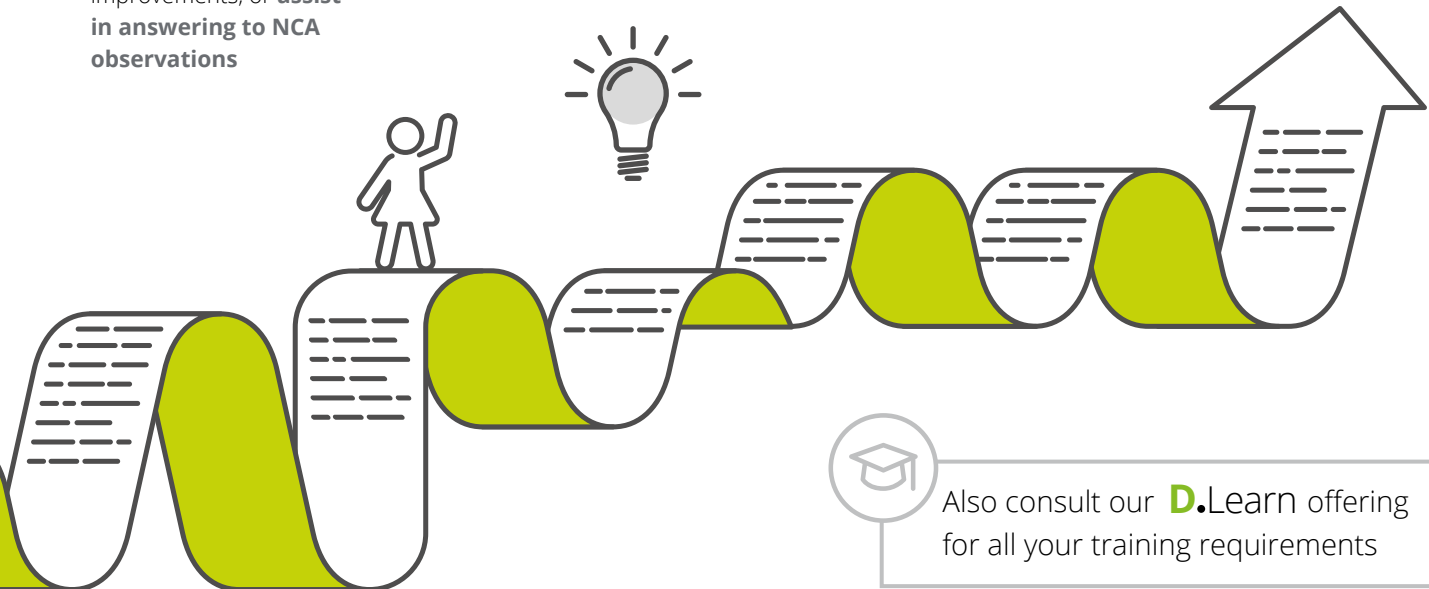
Policies and procedures

Draft/review and adapt your policies and procedures in light of the application regulation



Regulatory watch

Be **up-to-date with the regulatory changes** that directly or indirectly affect your organization through Kaleidoscope, our regulatory watch service



Also consult our **D.Learn** offering for all your training requirements

Your contacts for MiFID II

**Simon Ramos**

Partner - IM Leader,
Advisory & Regulatory Consulting
+352 451 452 702
siramos@deloitte.lu

**Pascal Martino**

Partner - Banking Leader,
Advisory & Regulatory Consulting
+352 451 452 119
pamartino@deloitte.lu

**Laurent Berliner**

Partner - Risk Advisory Leader
+352 451452 328
lberliner@deloitte.lu

**Julie van Cleemput**

Director - Advisory
& Regulatory Consulting
+352 451 452 989
jvanCleemput@deloitte.lu

**Erika Bourguet**

Director - Advisory
& Regulatory Consulting
+352 451 453 045
ebourguet@deloitte.lu

**Benoit Sauvage**

Senior Manager - Advisory
& Regulatory Consulting
+352 451 454 220
bsauvage@deloitte.lu

Deloitte.

Deloitte is a multidisciplinary service organization that is subject to certain regulatory and professional restrictions on the types of services we can provide to our clients, particularly where an audit relationship exists, as independence issues and other conflicts of interest may arise. Any services we commit to deliver to you will comply fully with applicable restrictions.

Deloitte refers to one or more of Deloitte Touche Tohmatsu Limited ("DTTL"), its global network of member firms and their related entities. DTTL (also referred to as "Deloitte Global") and each of its member firms are legally separate and independent entities. DTTL does not provide services to clients. Please see www.deloitte.com/about to learn more.

Deloitte is a leading global provider of audit and assurance, consulting, financial advisory, risk advisory, tax and related services. Our network of member firms in more than 150 countries and territories serves four out of five Fortune Global 500® companies. Learn how Deloitte's approximately 264,000 people make an impact that matters at www.deloitte.com.

This communication contains general information only, and none of Deloitte Touche Tohmatsu Limited, its member firms, or their related entities (collectively, the "Deloitte Network") is, by means of this communication, rendering professional advice or services. Before making any decision or taking any action that may affect your finances or your business, you should consult a qualified professional adviser. No entity in the Deloitte Network shall be responsible for any loss whatsoever sustained by any person who relies on this communication.

© 2018 Deloitte Tax & Consulting
Designed and produced by MarCom at Deloitte Luxembourg.

Deloitte Luxembourg

560, rue de Neudorf
L-2220 Luxembourg
Grand Duchy of
Luxembourg

Tel.: +352 451 451
Fax: +352 451 452 401
www.deloitte.lu