

Connect to Link'n Learn!
Digital Training program 2021-2022

BANKING

**Commoditization of some banking processes & services
leading to outsourcing**

27 April 2022

Governance and organization of the supervision

8 June 2022





INVESTMENT FUNDS

NAV calculation errors or investment rule non-compliance

15 September 2021

UCIs: Reduction of the subscription tax rate for funds investing in sustainable investments

22 September 2021

Asset management survey results 2021

1 December 2021

Cross-border marketing in Europe with a focus on (i) the Directive 2019/1160 and (ii) Brexit

16 February 2022

Fund Tax update: update on latest trends

11 May 2022



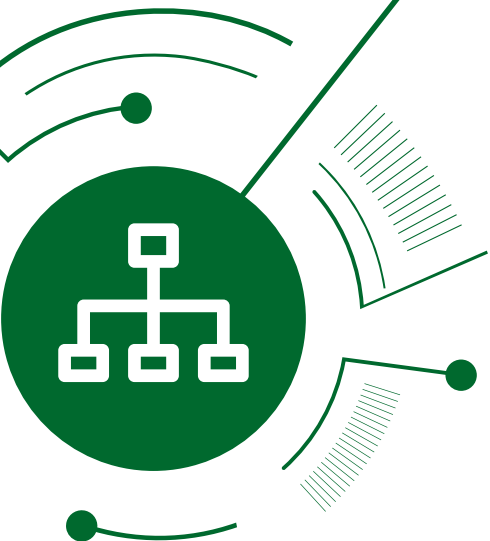
ALTERNATIVE INVESTMENTS

Supervision of costs in UCITS and AIFs

6 October 2021

Accounting: GAAP differences to consider for RE/ Alternative funds

19 January 2022





REGULATORY

PRIIPs and KID

20 October 2021

MIFIID II

2 February 2022

Regulatory Landscape for 2022

2 March 2022

AML/KYC

30 March 2022



RISK & ASSET MANAGEMENT

**Distribution and Product lifecycle management -
The ManCo as a key stakeholder!**

16 March 2022

Digital risk management

13 April 2022



SUSTAINABILITY

ESG Disclosure and data challenge

12 January 2022

The "G" in ESG and how CSO and CFO can boost it

25 May 2022



TECHNOLOGY AND INNOVATION

Technology and data to enhance AML/CTF and fraud risk management

17 November 2021

ManCo Tech

22 June 2022





Deloitte refers to one or more of Deloitte Touche Tohmatsu Limited (“DTTL”), its global network of member firms, and their related entities (collectively, the “Deloitte organization”). DTTL (also referred to as “Deloitte Global”) and each of its member firms and related entities are legally separate and independent entities, which cannot obligate or bind each other in respect of third parties. DTTL and each DTTL member firm and related entity is liable only for its own acts and omissions, and not those of each other. DTTL does not provide services to clients. Please see www.deloitte.com/about to learn more.

Deloitte is a leading global provider of audit and assurance, consulting, financial advisory, risk advisory, tax and related services. Our global network of member firms and related entities in more than 150 countries and territories (collectively, the “Deloitte organization”) serves four out of five Fortune Global 500® companies. Learn how Deloitte’s approximately 330,000 people make an impact that matters at www.deloitte.com.

This communication contains general information only, and none of Deloitte Touche Tohmatsu Limited (“DTTL”), its global network of member firms or their related entities (collectively, the “Deloitte organization”) is, by means of this communication, rendering professional advice or services. Before making any decision or taking any action that may affect your finances or your business, you should consult a qualified professional adviser.

No representations, warranties or undertakings (express or implied) are given as to the accuracy or completeness of the information in this communication, and none of DTTL, its member firms, related entities, employees or agents shall be liable or responsible for any loss or damage whatsoever arising directly or indirectly in connection with any person relying on this communication. DTTL and each of its member firms, and their related entities, are legally separate and independent entities.