

Features: Compilation services



Explicit transaction costs compilation at different levels

- On each **transactions**
- In **trial balances** or **accounting extracts**



Implicit transaction costs compilation through the new PRIIP methodology

- Based on client **transaction data**
- Based on client **data mapping**: instrument type, currency, order price, date, rating
- Client **data enrichment** tool
- Flexible selection of client **half bid-ask matrix**



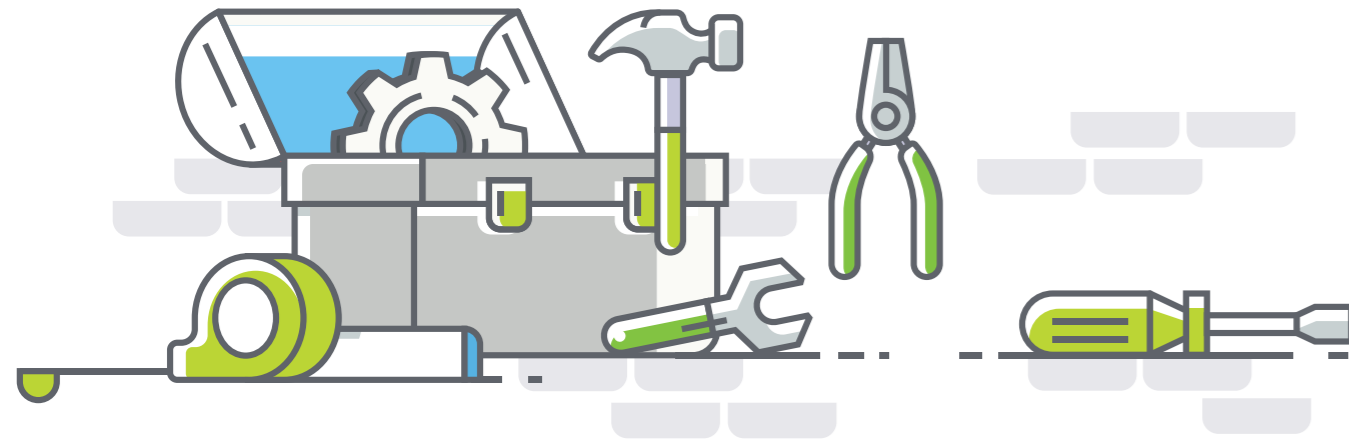
Anti-dilution proceed

- Use of **accounting extracts**
- If no data available, estimation of the **anti-dilution proceeds** based on parameters of the anti-dilution technique



Well-constructed BAU process

- Upload **Transaction file** from the client
- Upload the **TNA of the subfund** from client files
- Removing **duplicate transactions**
- Upload the **classification** computed on our Tool
- Compute the **basis of each transaction**
- Upload **BidAsk Spread matrix** and apply the spreads



Contacts



Xavier Zaegel
Partner - Capital Markets & Financial Risk Leader
+352 451 452 748
xzaegel@deloitte.lu



Sylvain Crépin
Directeur - Financial Industry Solutions
+352 451 454 054
screpin@deloitte.lu



Julien Baguet
Manager- Financial Industry Solutions
+352 451 454 609
jbaguet@deloitte.lu

Why Deloitte?

Our fully integrated offer:



Business analytics



Project management



Industry expertise



Regulatory watch



Technology/Reporting platform



Expert resources



Deep knowledge on data management

Deloitte.

Deloitte is a multidisciplinary service organization that is subject to certain regulatory and professional restrictions on the types of services we can provide to our clients, particularly where an audit relationship exists, as independence issues and other conflicts of interest may arise. Any services we commit to deliver to you will comply fully with applicable restrictions.

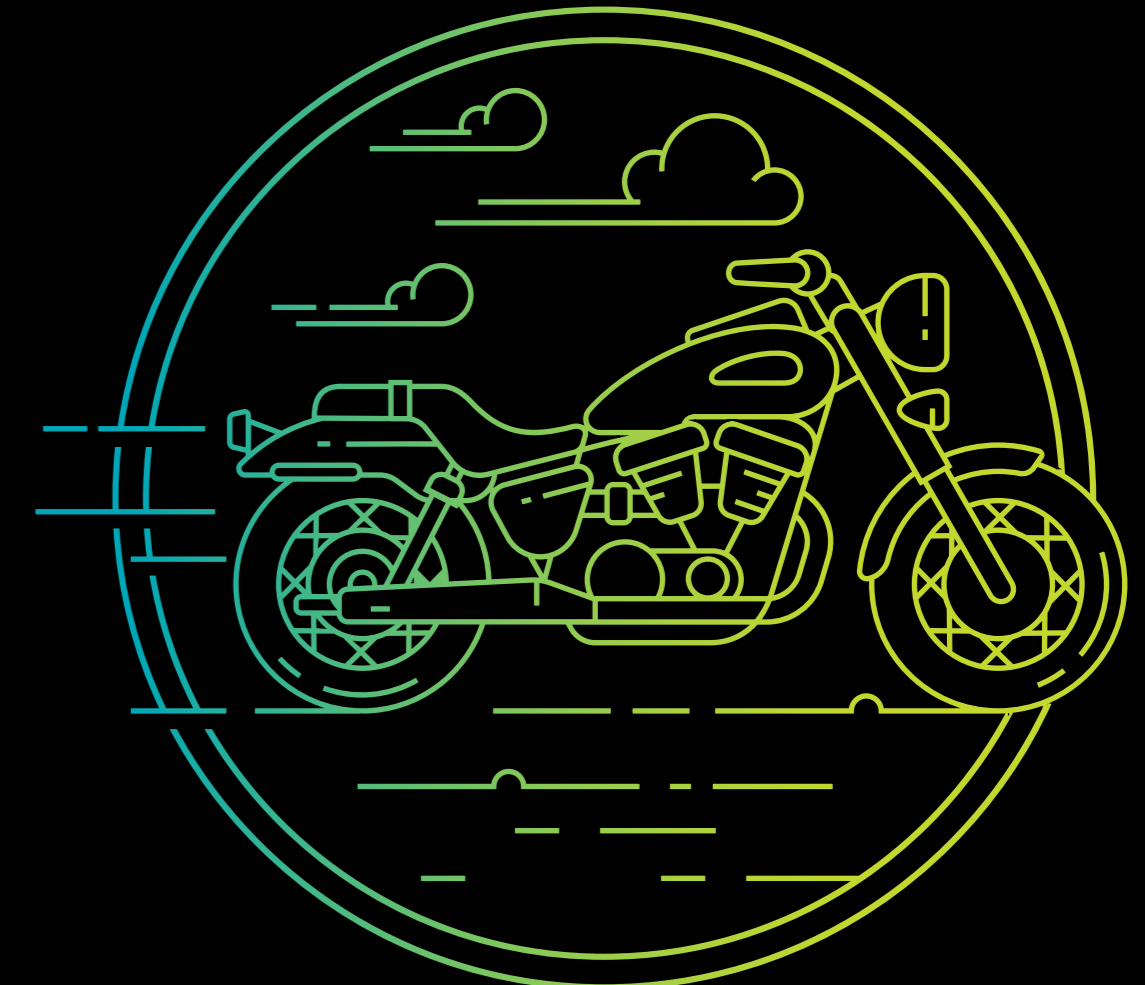
Deloitte refers to one or more of Deloitte Touche Tohmatsu Limited ("DTTL"), its global network of member firms and their related entities. DTTL (also referred to as "Deloitte Global") and each of its member firms are legally separate and independent entities. DTTL does not provide services to clients. Please see www.deloitte.com/about to learn more.

Deloitte is a leading global provider of audit and assurance, consulting, financial advisory, risk advisory, tax and related services. Our network of member firms in more than 150 countries and territories serves four out of five Fortune Global 500® companies. Learn how Deloitte's approximately 264,000 people make an impact that matters at www.deloitte.com.

This communication contains general information only, and none of Deloitte Touche Tohmatsu Limited, its member firms, or their related entities (collectively, the "Deloitte Network") is, by means of this communication, rendering professional advice or services. Before making any decision or taking any action that may affect your finances or your business, you should consult a qualified professional adviser. No entity in the Deloitte Network shall be responsible for any loss whatsoever sustained by any person who relies on this communication.

© 2018 Deloitte Tax & Consulting
Designed and produced by MarCom at Deloitte Luxembourg.

Deloitte.



Avoid the bumps on the road to reporting

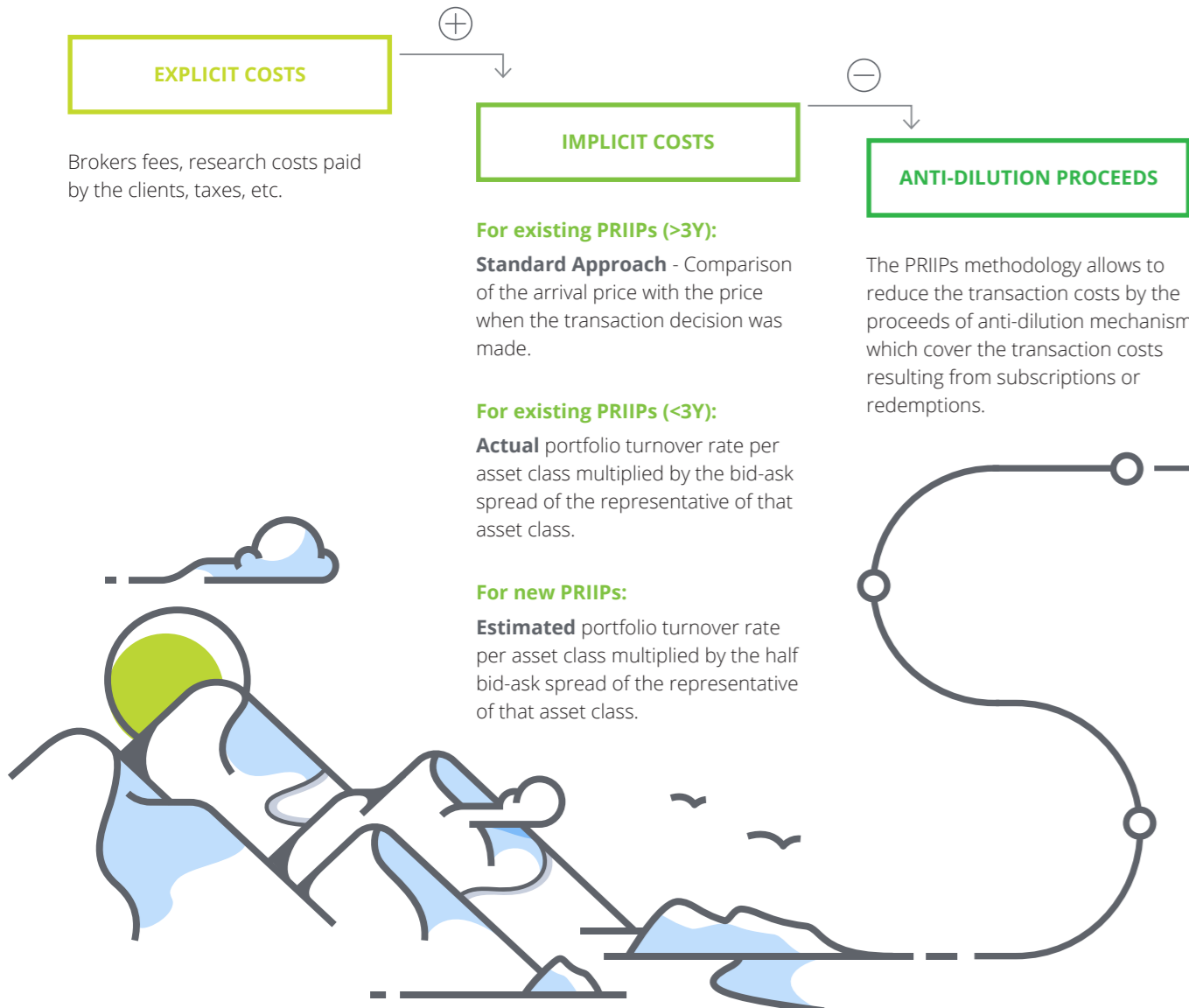
Transaction costs: our solutions for PRIIPs and MiFID reporting

Deloitte Luxembourg
560, rue de Neudorf
L-2220 Luxembourg
Grand Duchy of Luxembourg

Tel.: +352 451 451
Fax: +352 451 452 401
www.deloitte.lu

PRIIPs/MiFID II transaction costs

PRIIPs RTS requires **Transaction Costs** compilation be composed of:

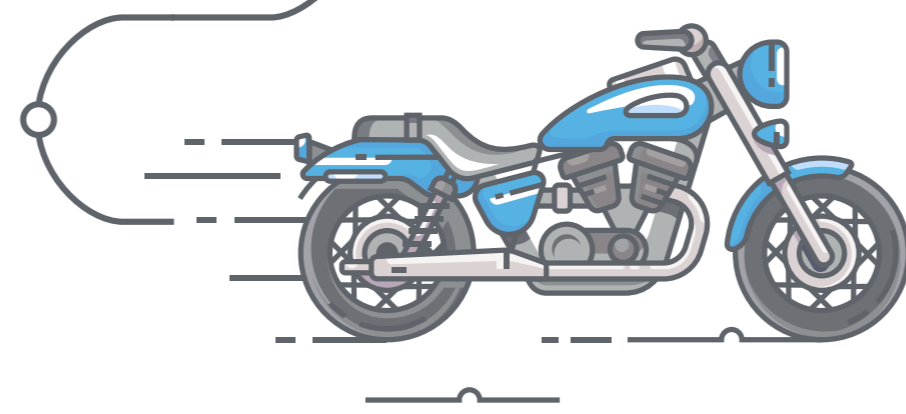


For MiFID II, transaction costs should also be reported:

- There are two types of cost disclosure: **ex-ante and ex-post**
- For MiFID II in general, the methodology for costs compilation in general and transaction in particular is broad and **allows the re-use of the costs elements of PRIIPs**
- Several options available regarding the frequency of the costs data, from monthly to annually

Monitoring of regulatory updates: MiFID II and PRIIPs

The components of transaction costs for MiFID II and PRIIPs are similar, with the exception that **market movements should not be taken into account for MiFID II** even though MiFID II Investor protection Q&As mention the potential use of PRIIPs arrival price.



Features: Controls implemented

In our **in-house tool**:

