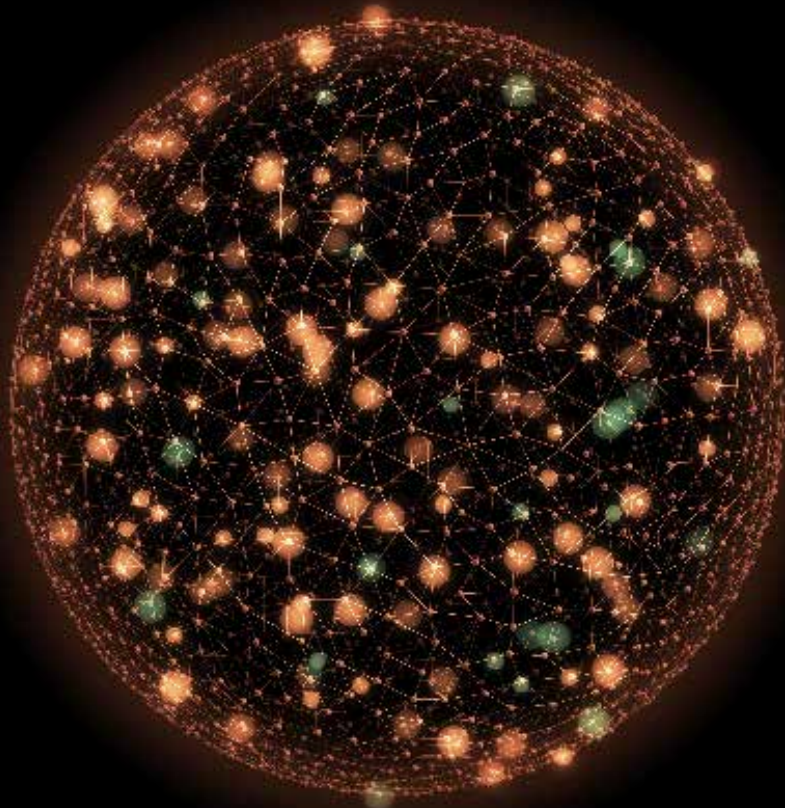


Deloitte.



Connecting innovation,
transformation and
leadership

CONSULTING SERVICES

Innovation, transformation, and leadership occur in many ways. The ability to solve complex issues is critical. Together, we can help you imagine, deliver, and run your business, wherever you compete, using the latest technologies, from strategy development through to implementation.



In today's world, it takes diverse perspectives and connections to create simple, yet disruptive solutions. Behind every great idea, every groundbreaking product, every new advancement, there are people and technologies working together.

At Deloitte, we bring this diversity and energy to your project, providing innovative configurations to fit your organisation.

We believe that constant evolution is the difference between flourishing or failing in the age of technological disruption. It's a fundamental philosophy that underpins our leading-edge strategy services and transformative digital solutions.

Our people bring the same agility and problem-solving creativity to their work that they aim to inspire in clients. It's part of the unique proposition we call Imagine, Deliver, Run: an integrated and adaptive end-to-end journey through the process of business transformation.

It's about embracing machine-driven transformation with a human-centric vision.

It's about flourishing in the near term while adapting for the long term. And it means nothing less than reimagining what's possible.

Put very simply, we help you imagine, deliver and run your future.

OUR SERVICES

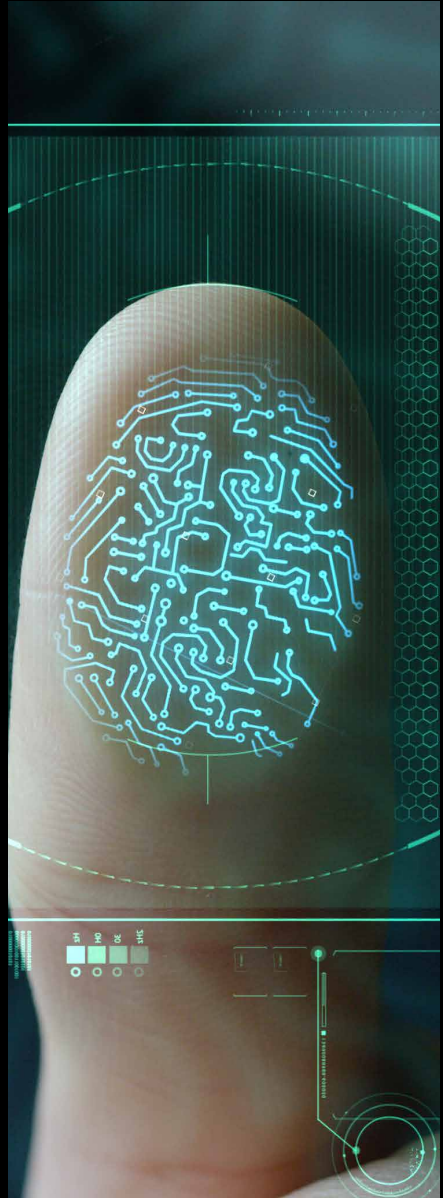
Enterprise Technology & Performance

Technology Strategy & Architecture

Our Technology Strategy & Architecture practice can advise you in developing and executing technology strategies that, aligned to your business priorities, will drive exceptional business value. We help our clients identify areas that will make an impact on their business in order to drive focus on practical solutions that support the key business objectives. We help our clients by providing leading practices, thought leadership, solutions, subject matter experts with a global experience, and tools and accelerators to drive value quickly. We support our clients through the solution lifecycle, from initial technology enabled innovation, leading to strategy and architecture and working with our implementation practices to operationalise new solutions.

Business & Systems Transformation

Deloitte can support and supplement your IT function to assist you in working with technology vendors to enable your business through systems and digital transformation. We provide project management and PMO Support. Deloitte can help you design and establish a new Target Operating Model, detail and document business processes and manage the implication of change to your business, that is, change management. In addition, we can advise and support such transformation providing infrastructure and application architecture guidance.





Data Analytics, Reporting & Governance

We help clients uncover and unlock the value buried deep inside vast amounts of data. We provide strategic guidance and implementation services to help companies manage data from disparate sources and convert it into accurate, actionable information that can support fact-driven decision-making and generate an insight-driven advantage. Our practice addresses the continuum of opportunities in business intelligence

and visualisation, information management, performance management and next-generation analytics and technologies, including big data, cloud, cognitive and intelligent automation.

Customer & Marketing

Elevate the Human Experience

Customers are at the heart of any business and are essential for the growth and success of any brand – this is why Deloitte focuses on helping business elevate the experience offered to their customers.

Customer experience and marketing has evolved to become a core business function that's essential to growth and success. Our Customer & Marketing specialists understand how to help marketing and customer experience leaders balance and integrate a complex range of tasks that include digital innovation, customer service and experience, advertising, and more. Our leading-edge digital solutions and data-driven strategies are propelled by a human-first vision for creating and retaining engaged customers and powering sustained growth.

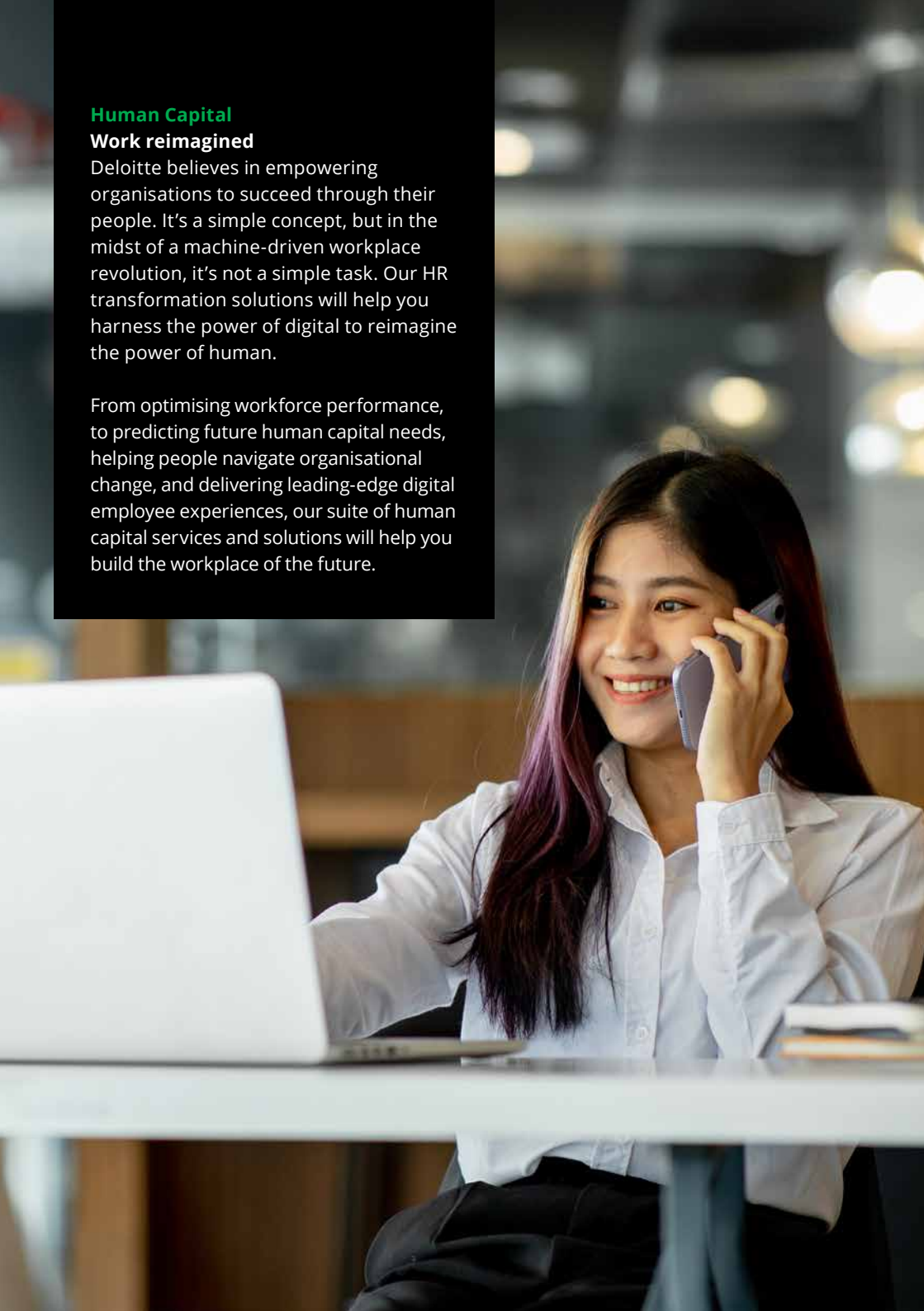
We can help you understand your customer touchpoints through insights and reimagine your digital channels to creatively design, build, and operate platforms and solutions that deliver personalised marketing, sales, and service experiences.

Human Capital

Work reimagined

Deloitte believes in empowering organisations to succeed through their people. It's a simple concept, but in the midst of a machine-driven workplace revolution, it's not a simple task. Our HR transformation solutions will help you harness the power of digital to reimagine the power of human.

From optimising workforce performance, to predicting future human capital needs, helping people navigate organisational change, and delivering leading-edge digital employee experiences, our suite of human capital services and solutions will help you build the workplace of the future.



Start the conversation

Get in touch to discover how our consultancy services could benefit your organisation:



Damian Heath

Director - Consulting

dheath@deloitte.com.mt

+356 2343 2250



Ludwig Micallef

Director - Consulting

lumicallef@deloittedigital.com.mt

+356 2343 2252

For more information visit www.deloitte.com/mt/consulting

Deloitte.

The Deloitte Malta firm consists of (i) Deloitte, a civil partnership regulated in terms of the laws of Malta, constituted between limited liability companies, operating at Deloitte Place, Triq L-Intornjatur, Central Business District, CBD 3050 Malta and (ii) the affiliated operating entities: Deloitte Services Limited (C51320), Deloitte Advisory and Technology Limited (C23487), Deloitte Audit Limited (C51312) and Malta International Training Centre Limited (C5663), all limited liability companies registered in Malta with registered offices at Deloitte Place, Triq L-Intornjatur, Central Business District, CBD 3050 Malta. The Deloitte Malta firm is an affiliate of Deloitte Central Mediterranean S.r.l., a company limited by guarantee registered in Italy with registered number 09599600963 and its registered office at Via Tortona no. 25, 20144, Milan, Italy. For further details, please visit www.deloitte.com/mt/about.

Deloitte Central Mediterranean S.r.l. is the affiliate for the territories of Italy, Greece and Malta of Deloitte NSE LLP, a UK limited liability partnership and member firm of Deloitte Touche Tohmatsu Limited, a UK private company limited by guarantee ("DTTL"). DTTL and each of its member firms are legally separate and independent entities. DTTL, Deloitte NSE LLP and Deloitte Central Mediterranean S.r.l. do not provide services to clients. Please see www.deloitte.com/about to learn more about our global network of member firms.

Deloitte provides industry leading audit and assurance, tax and related services, consulting, financial advisory, and risk advisory services to nearly 90% of the Fortune Global 500® and thousands of private companies. Our professionals deliver measurable and lasting results that help reinforce public trust in capital markets, enable clients to transform and thrive, and lead the way toward a stronger economy, a more equitable society, and a sustainable world. Building on its 175 plus year history, Deloitte spans more than 150 countries and territories. Learn how Deloitte's more than 345,000 people worldwide make an impact that matters at [HYPERLINK "http://www.deloitte.com" www.deloitte.com](http://www.deloitte.com)

This communication contains general information only, and none of Deloitte Touche Tohmatsu Limited ("DTTL"), its global network of member firms or their related entities (collectively, the "Deloitte organisation") is, by means of this communication, rendering professional advice or services. Before making any decision or taking any action that may affect your finances or your business, you should consult a qualified professional adviser.

No representations, warranties, or undertakings (express or implied) are given as to the accuracy or completeness of the information in this communication, and none of DTTL, its member firms, related entities, employees, or agents shall be liable or responsible for any loss or damage whatsoever arising directly or indirectly in connection with any person relying on this communication.