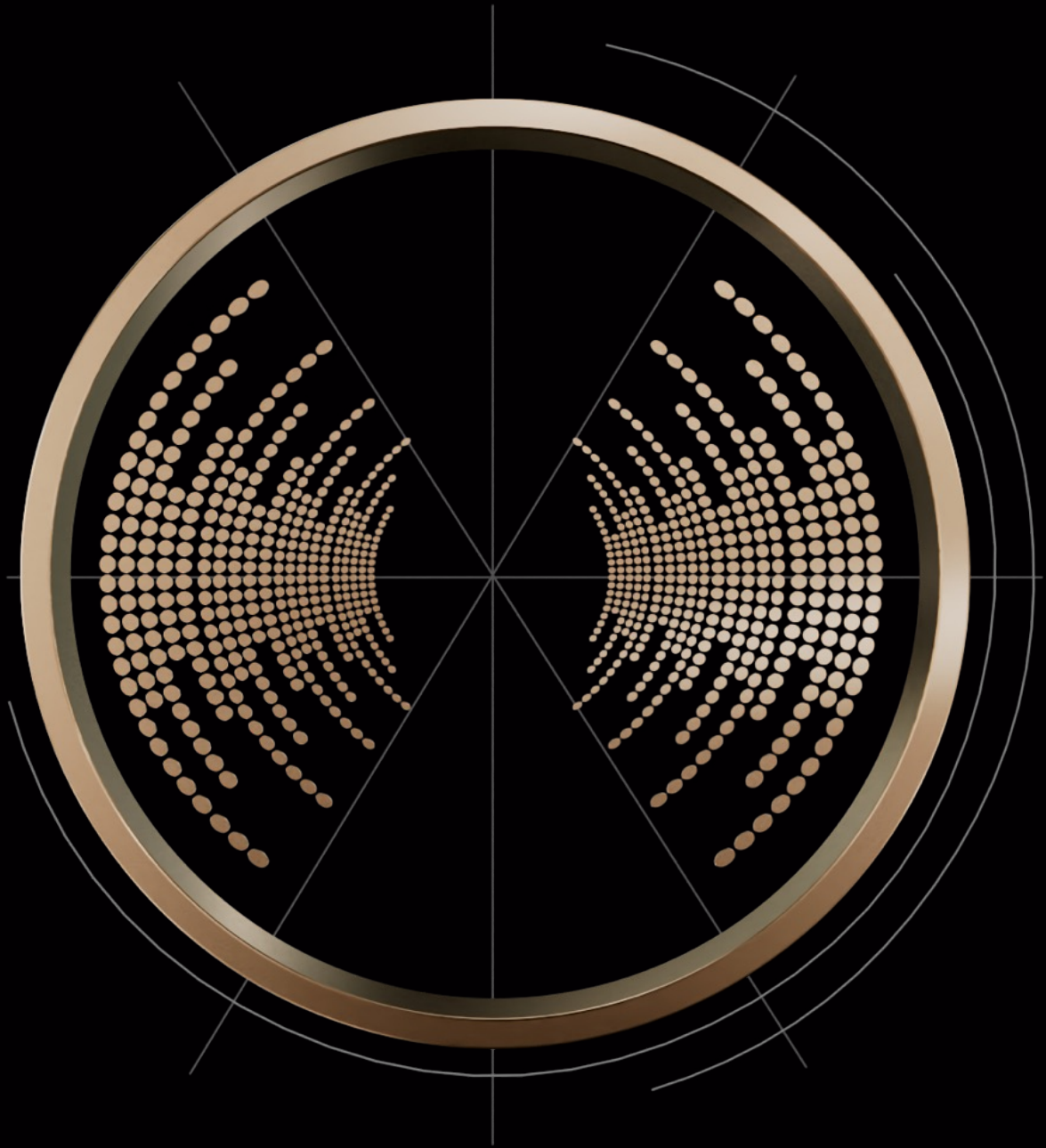


Deloitte.



Conduct Watch

Your trusted digital
whistleblowing solution

We are led by one purpose: to make an impact that matters

Our goal is to help organisations manage workplace misconduct and strengthen governance effectively. Deloitte is a trusted and recognised global provider of whistleblowing solutions for corporate and public sector entities across the globe.

The Future of Trust

Whistleblowing on the rise

Unprecedented changes in the workplace, remote working practices, and financial pressures have increased the likelihood of fraud, misconduct, and other unethical behaviour in organisations.

With heightened awareness of social issues and the rise of social media, organisations are under more pressure than ever to protect their reputation by ensuring that any misconduct is identified and addressed in a timely manner.

Concurrently, regulators across the world have raised the bar for organisations to deal with financial crime and implement whistleblowing processes - breaches of which can result in significant financial penalties.

Whistleblowing remains one of the most effective counter-measures* to help organisations deal with workplace misconduct. Protect your employees, your organisation, and your reputation by providing secure and trusted channels to report misconduct.

*Source: ACFE's Report to the Nations 2020
<https://www.acfe.com/report-to-the-nations/2020/>

In Malaysia, the Guidelines on Adequate Procedures recommends companies establish accessible, confidential trusted whistleblowing channels and encourage the use of these channels to report suspected and/or real corruption incidents.



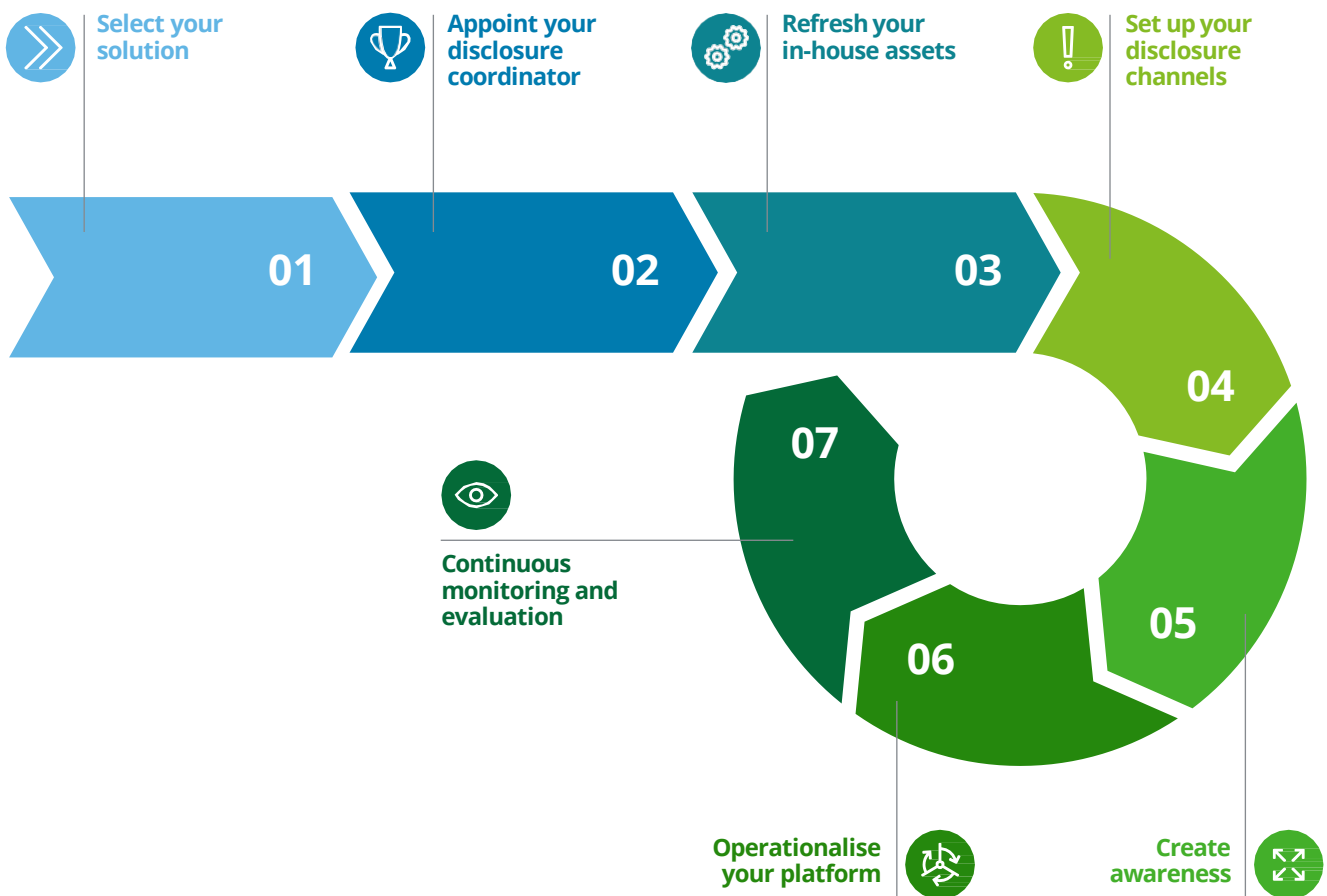
Conduct Watch. Secure. Seamless. Insightful.

We are a leading whistleblowing solutions provider with our experienced team of analysts, multi-language capabilities, deep subject matter and industry knowledge, enhanced by our leading digital whistleblowing solution.

Protect your people and your organisation

Fraud, bribery and corruption, misconduct, harassment, bullying, and other unethical behaviour - when left undetected or unreported - can cause irreparable financial and reputational damage to your organisation.

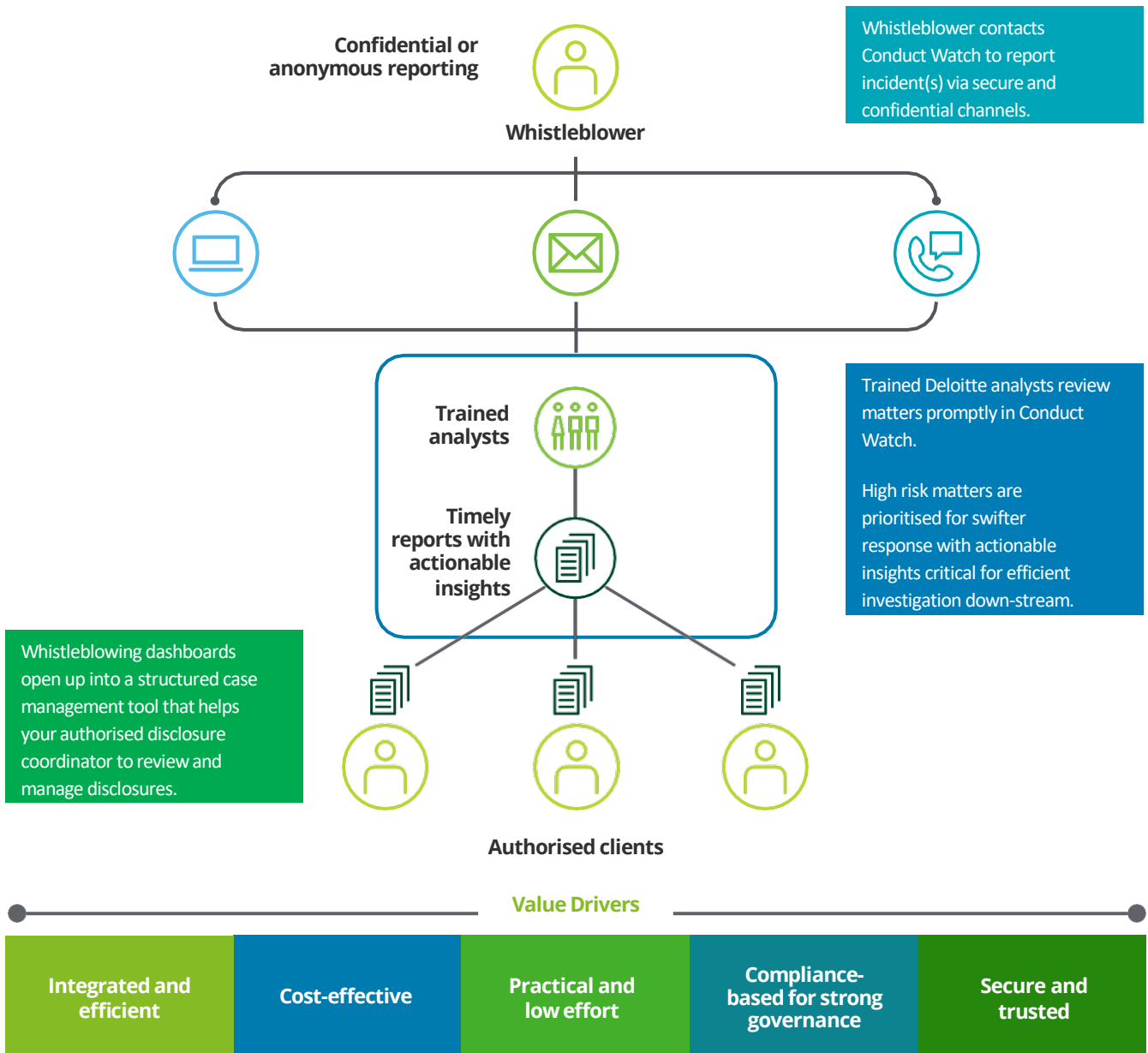
Protect your people and your organisation by establishing safe channels for your employees and other whistleblowers to step forward and safely and securely "blow-the-whistle" on misconduct.



Deloitte's goal is to equip your organisation with a whistleblowing solution that provides users with a confidential, secure method of reporting which is easily implemented, can be operationalised quickly, and enables you to monitor the effectiveness of policies and internal controls.

Manage your whistleblowing process with Conduct Watch

In-depth whistleblowing experience enhanced by our leading edge technology.



Conduct Watch

At a glance

Conduct Watch is designed to help your organisation achieve secure and confidential reporting channels reinforced by advanced security features. It simplifies case management and provides analytical insight across your organisation's whistleblowing disclosures. Trained Deloitte analysts will review incidents, prepare reports, and escalate high-risk matters for your further action.



Contact us



Yang Ping Oo
AP Managing Director
Conduct Watch
Deloitte Forensic Southeast Asia
yoo@deloitte.com



Shaun Le Simon
Manager
Deloitte Forensic Southeast Asia
ssimon@deloitte.com

Deloitte.

Deloitte refers to one or more of Deloitte Touche Tohmatsu Limited (“DTTL”), its global network of member firms, and their related entities (collectively, the “Deloitte organisation”). DTTL (also referred to as “Deloitte Global”) and each of its member firms and related entities are legally separate and independent entities, which cannot obligate or bind each other in respect of third parties. DTTL and each DTTL member firm and related entity is liable only for its own acts and omissions, and not those of each other. DTTL does not provide services to clients. Please see www.deloitte.com/about to learn more.

Deloitte Asia Pacific Limited is a company limited by guarantee and a member firm of DTTL. Members of Deloitte Asia Pacific Limited and their related entities, each of which are separate and independent legal entities, provide services from more than 100 cities across the region, including Auckland, Bangkok, Beijing, Hanoi, Hong Kong, Jakarta, Kuala Lumpur, Manila, Melbourne, Osaka, Seoul, Shanghai, Singapore, Sydney, Taipei and Tokyo.

About Deloitte Malaysia

In Malaysia, services are provided by Deloitte Business Advisory Sdn Bhd and its affiliates.

This communication contains general information only, and none of Deloitte Touche Tohmatsu Limited (“DTTL”), its global network of member firms or their related entities (collectively, the “Deloitte organisation”) is, by means of this communication, rendering professional advice or services. Before making any decision or taking any action that may affect your finances or your business, you should consult a qualified professional adviser.

No representations, warranties or undertakings (express or implied) are given as to the accuracy or completeness of the information in this communication, and none of DTTL, its member firms, related entities, employees or agents shall be liable or responsible for any loss or damage whatsoever arising directly or indirectly in connection with any person relying on this communication. DTTL and each of its member firms, and their related entities, are legally separate and independent entities.