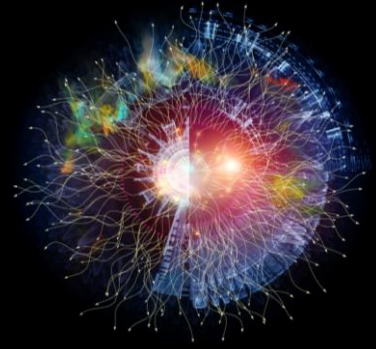


## Process X-ray

Making impact by leveraging process understanding



Reduce cost



Improve quality



Shorten timelines



Reduce risk



100% fact-based

Process X-ray leverages ERP/systems data to achieve full transparency into your major end-to-end processes, quantifying complexity based on data-driven facts.

### The Challenge

You need to have transparency into your data to understand the way things are working, to then uncover insights that ultimately enable **high performance**. Initiatives around process compliance, controls, standardization, improvement, and harmonization all start with that approach. However, it is difficult to get an objective, unbiased, and full understanding of these high-volume operational processes that are stored in IT systems, often spanning departments and even geographies.

### The Solution

Process X-ray mines data from various IT systems to reconstruct **what really happened** in the end-to-end process based on actual data. It then moves from what really happened, where it happened, and by whom, to understanding **why things are happening**. Process X-ray enables you to realize 100% true data transparency, gain actionable insights, drive success, and in many cases can help increase your ROI. This is powered by a cloud-based model and an optimized data platform to increase efficiency.

### Why apply process mining?

Process X-ray enables a **paradigm shift** in understanding your actual process execution, by **empowering business users** to create their own visualizations and deep dive analyses. It gives you a **100% fact-based end-to-end view** of processes in your business. This enables you to **pinpoint issues** at the enterprise level and perform a **root cause analysis** on the drivers behind your company's performance. Furthermore, Process X-ray reveals your **internal best practices**, allowing you to rally your organization around them. All this is achieved in a **non-intrusive** manner, meaning business-as-usual for your IT department.

### Process X-ray Capabilities



**Process Mining as a Service**  
Process X-ray is developed to apply fast and easy within a few days.



**Experience & Technology**  
Use Deloitte knowledge and technology to identify risks, inefficiencies, non-compliance, and process optimization.



**Pre-defined content for SAP®, Oracle® & other systems**  
Developed with deep experience in audit, business, risk, and process consulting.



**Demonstrated Approach**  
Enriched with Deloitte's leading business process knowledge, demonstrated approaches, and bespoke trainings.

## Discover what really happened

Process mining changes the conversation from discovering what happened, where and by whom, to understanding why things are happening and take action. The Process X-ray platform allows the business users to deep-dive into the data to uncover facts as to why processes go wrong, what risks are involved, and the improvement potential.



## Go from an bird's-eye view to details in real-time

Start your analysis looking at 100% of the process. Each steps in the process are visualized in the process view. From this high-level overview, you can aggregate the data using charts and pivots and eventually show all the available details for one specific ID.

### When to apply

- SAP S/4HANA® implementation
- Oracle Fusion implementation
- Internal audit
- System migration
- System merger
- Financial audit
- Working capital improvement
- Managing controls
- Process discovery
- Process re-design
- Process improvement
- Process harmonization
- Process standardization
- Process automation
- Process compliance
- Process control

### Ways to engage



#### One-off project

Using Process X-ray as part of a Deloitte project, receiving a one-time current state analysis of business process enabling project teams to get faster and more efficient fact-based insights.



#### Managed Service

Repetitive service typically with (bi-)monthly analysis, workshops and reports on various processes.



#### SaaS license

Enable clients to leverage our process analytics in their day-to-day business by buying a software license to use it yourself.

## Start the conversation

If you're interested in learning how Deloitte can help you make an impact with Process X-ray, we should talk. Contact one of us directly, or visit [www.processxray.com](http://www.processxray.com) for more information .

#### Neil White

Principal  
Deloitte & Touche LLP  
[nwhite@deloitte.com](mailto:nwhite@deloitte.com)

#### Clay Young

Partner  
Deloitte & Touche LLP  
[clyoung@deloitte.com](mailto:clyoung@deloitte.com)

#### Kimberly Turgeon

Partner  
Deloitte Canada  
[kturgeon@deloitte.ca](mailto:kturgeon@deloitte.ca)

#### Marc Verdonk

Partner  
Deloitte North South Europe  
[mverdonk@deloitte.nl](mailto:mverdonk@deloitte.nl)

Deloitte refers to one or more of Deloitte Touche Tohmatsu Limited ("DTTL"), its global network of member firms and their related entities. DTTL (also referred to as "Deloitte Global") and each of its member firms are legally separate and independent entities. DTTL does not provide services to clients. Please see [www.deloitte.nl/about](http://www.deloitte.nl/about) to learn more.

Deloitte is a leading global provider of audit and assurance, consulting, financial advisory, risk advisory, tax and related services. Our network of member firms in more than 150 countries and territories serves four out of five Fortune Global 500® companies. Learn how Deloitte's approximately 286,000 people make an impact that matters at [www.deloitte.nl](http://www.deloitte.nl).

This communication contains general information only, and none of Deloitte Touche Tohmatsu Limited, its member firms or their related entities (collectively, the "Deloitte network") is, by means of this communication, rendering professional advice or services. Before making any decision or taking any action that may affect your finances or your business, you should consult a qualified professional adviser. No entity in the Deloitte network shall be responsible for any loss whatsoever sustained by any person who relies on this communication.