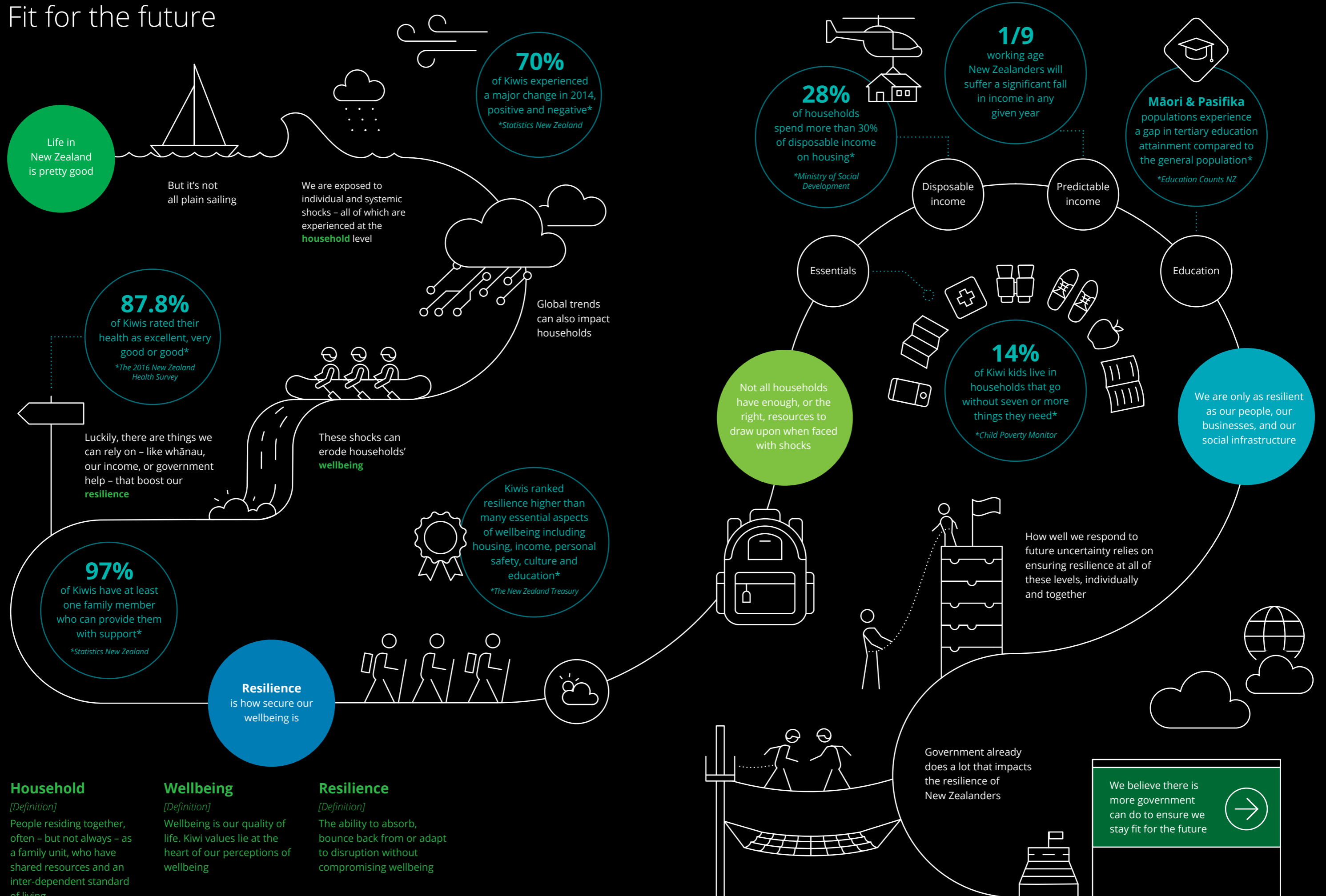


Fit for the future



Household
[Definition]
People residing together, often - but not always - as a family unit, who have shared resources and an inter-dependent standard of living

Wellbeing
[Definition]
Wellbeing is our quality of life. Kiwi values lie at the heart of our perceptions of wellbeing

Resilience
[Definition]
The ability to absorb, bounce back from or adapt to disruption without compromising wellbeing